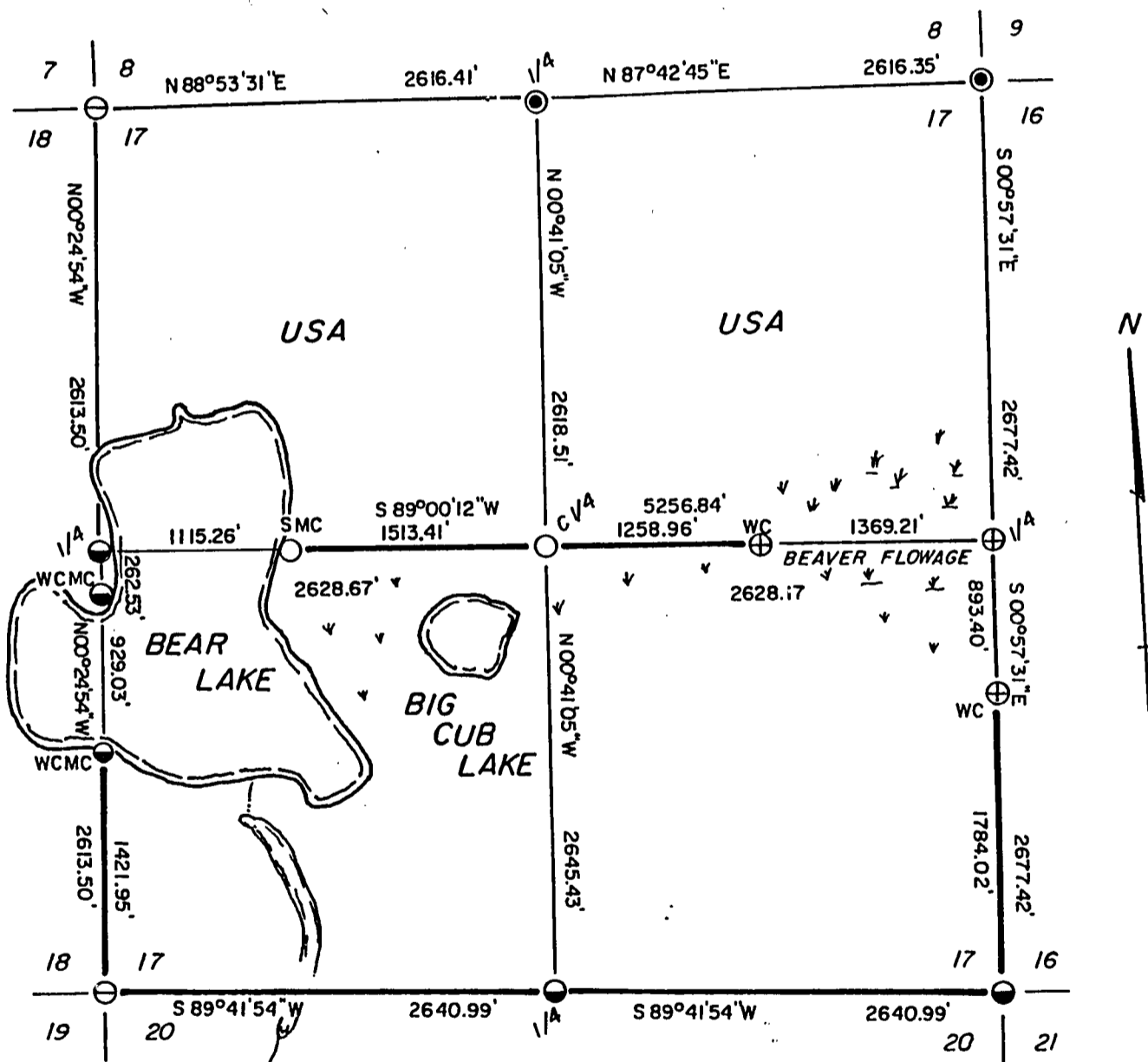
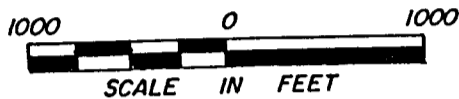


PLAT OF SURVEY U.S. GOVERNMENT LAND

Being the NE 1/4, the NW 1/4 and Part of the SW 1/4 of Section 17
Township 35 North Range 16 East, Fourth Principal Meridian
Forest County, Wisconsin



LEGEND

- ⊖ = FOUND ALUMINUM MONUMENT, WITH CAP STAMPED FOR CORNER
- = SET 2" DIAMETER ALUMINUM MONUMENT, 36" LONG WITH CAP STAMPED FOR CORNER
- ⊕ = SET 2" DIAMETER ALUMINUM MONUMENT, 60" LONG WITH CAP STAMPED FOR CORNER
- = SET 1" DIAMETER ALUMINUM MONUMENT, 36" LONG WITH CAP STAMPED FOR CORNER
- ⊙ = SET RR SPIKE WITH 2" DIAMETER ALUMINUM MONUMENT, 36" LONG WITH CAP STAMPED REFERENCE MONUMENT

— = MARKED BOUNDARY LINES OF U.S. GOVERNMENT LAND

Stock No. 26273

Sheet two of five

SURVEY NOTES

This survey was made by AARON ASSOCIATES of Oconto Falls, Wisconsin, under contract with the U.S. Department of Agriculture, Forest Service, for the purpose of restoring, and establishing corners on the perimeter of Section 17, for establishing subdivisional corners within Section 17, and for locating and marking the boundaries of U.S. Government land on their perimeter and within Section 17, Township 35 North, Range 16 East, Fourth Principal Meridian, Forest County, Wisconsin.

The U.S. Government land in this section was acquired in 1934, 1935 and 1936.

The original government survey of this township was made in 1858.

The corner positions recovered, restored, and established by this survey are marked with monuments described in the map legend.

The corner positions established were located to an accuracy of one part in 5000.

The bearings between corner positions are true bearings as determined by solar observations.

The field notes of this survey and a copy of the plat map are on file in the Forest Supervisor's Office at Rhinelander, Wisconsin.

CORNERS RECOVERED AND RESTORED

- 1) Section corner to Sections 17-18-19-20, T35N, R16E
Corner was recovered, set by Alan Harrison, RLS.
Certificate on file in the Forest County Courthouse.
- 2) Section Corner to Sections 7-8-17-18, T35N, R16E
Corner was recovered, set by Milo Stefan, RLS.
Certificate on file in the Forest County Courthouse.
- 3) Section Corner to Sections 8-9-16-17, T35N, R16E
Corner was restored using road centerline and proportionate distances between the southwest corner of section 8 and the south quarter corner of section 9.
Natural feature calls did not fit. Corner references:

Balsam Fir	8"	N30W	55.50 ft.
Ash	7"	S32W	67.14 ft.
Cedar	9"	South	95.01 ft.
Aluminum Reference Monument		North	25.00 ft.
Steel Sign Post		North	25.40 ft.

Stock No. 26273

Sheet three of five

4) Section Corner to Sections 16-17-20-21, T35N, R16E

Corner position was recovered from rotted post found bearing N35W, a distance of 9 feet from a downed 30" Hemlock stump. Pulled bearings and distances to other three Sugar bearing tree locations and found possible hardwood depressions. The post position fit swamp calls north and was therefore accepted and monumented. Corner references:

Basswood	8"	N57E	23.61 ft.
Basswood	13"	S56E	16.01 ft.
Basswood	12"	S22W	17.25 ft.
Maple	9"	N40W	52.44 ft.
Steel Sign Post		North	1.10 ft.

5) Quarter Corner to Sections 17-18, T35N, R16E

Corner position was determined to be lost, falling in developed beach area, and was set by single proportionate measure. Corner references:

Red Pine	5"	S09W	25.50 ft.
Maple	6"	N83W	18.26 ft.
1" Diameter Iron Pipe		N04E	23.16 ft.
1" Diameter Iron Pipe		East	74.57 ft.
Steel Sign Post		South	2.70 ft.

6) Quarter Corner to Sections 8-17, T35N, R16E

Corner was restored in the centerline of the existing road at single proportionate distance between the northwest and northeast corners of section 17. Corner references:

White Birch	11"	S44E	58.10 ft.
Maple	6"	S10E	42.89 ft.
Spruce	15"	N17W	125.34 ft.
Aluminum Reference Monument		North	25.00 ft.
Steel Sign Post		North	25.50 ft.

7) Quarter Corner to Section 16-17, T35N, R16E

Corner was determined to be lost after beaver dam was blown up and a diligent search in the beaver flowage proved unsuccessful. The corner position was set but no live trees fell within 700 ft. Witness Corners were set to the west and south of the quarter corner on the edge of the beaver flowage. Corner references:

Witness Corner 1,366.21 ft. West of Quarter Corner

Maple	8"	N11W	13.63 ft.
Maple	6"	S32W	2.64 ft.
Cedar	10"	S52W	47.06 ft.
Maple	8"	N81W	80.23 ft.
Steel Sign Post		West	0.60 ft.

Witness Corner 893.40 ft. South of Quarter Corner

Maple	5"	S47E	31.05 ft.
Maple	6"	S34W	37.50 ft.
Maple	6"	S76W	37.63 ft.
Spruce	5"	N02W	63.57 ft.
Steel Sign Post		South	1.00 ft.

Sheet four of five

- 8) Quarter Corner to Sections 17-20, T35N, R16E
 Corner position was determined to be lost after a diligent search in a Popple slash area proved unsuccessful. The corner was set at single proportionate measure. Corner references:

Aspen	4"	N75E	27.85 ft.
Dbl. Red Pine	15"	S28E	78.97 ft.
Aspen	9"	S24W	17.25 ft.
Dbl. Red Pine	11"	N82W	47.61 ft.
Steel Sign Post		East	1.00 ft.

- 9) Witness Corner to Meander Corner on South Side of Lake to Sections 17-18, T35N, R16E

The meander corner fell in the lake. The witness monument was set on line between sections 17-18 on the south bank of the lake. Distance from Witness Corner to Meander Corner is 4.31 ft. north. Corner references:

White Birch	6"	S38E	28.58 ft.
White Birch	12"	S08E	26.60 ft.
Maple	6"	S20W	39.32 ft.
Ash	5"	S80W	24.85 ft.
Steel Sign Post		South	0.90 ft.

- 10) Witness Corner to Meander Corner on North Side of Lake to Sections 17-18, T35N, R16E

The meander corner fell in the lake. Set the witness corner on line between sections 17-18 on the north bank of the lake. Distance from Witness Corner to Meander Corner is 13.35 ft. south. Corner references:

Spruce	4"	N51E	14.40 ft.
Balsam Fir	5"	N32E	2.62 ft.
Maple	5"	N32W	53.53 ft.
Steel Sign Post		East	0.60 ft.

CORNERS ESTABLISHED

- 1) Center Quarter Corner to Section 17, T35N, R16E
 Set this corner position at the straight line intersection point of the north-south and east-west quarter lines of section 17. Corner references:

Maple	11"	S56E	15.37 ft.
Maple	7"	S49W	35.35 ft.
Steel Sign Post		East	1.85 ft.

- 2) Special Meander Corner to Section 17, T35N, R16E
 Set this corner position on the east-west quarter line of section 17 on the east bank of the lake. Corner references:

Cedar	10"	N16E	7.00 ft.
Red Pine	14"	S58E	34.91 ft.
Steel Sign Post		East	1.50 ft.



Stock No. 26273

Sheet five of five

SURVEYOR'S AFFIDAVIT

STATE OF WISCONSIN)
OCONTO COUNTY)SS

I, Kim H Pritzlaff, Registered Land Surveyor in the State of Wisconsin, hereby certify: that I have surveyed and subdivided section 17, Township 35 North, Range 16 East, Fourth Principal Meridian, Forest County, Wisconsin.

The notes and plat map herewith are a correct representation of the land surveyed and subdivided. I have surveyed and subdivided said section in accordance with the rules for the survey of the public lands and with the Statutes of the State of Wisconsin.

Date of survey: 1993

Kim H Pritzlaff, RLS No. 1259
AARON ASSOCIATES
Oconto Falls, Wisconsin



Plat ready for filing:

District Ranger