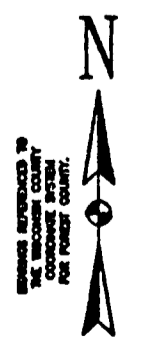
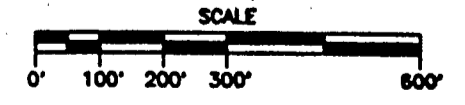
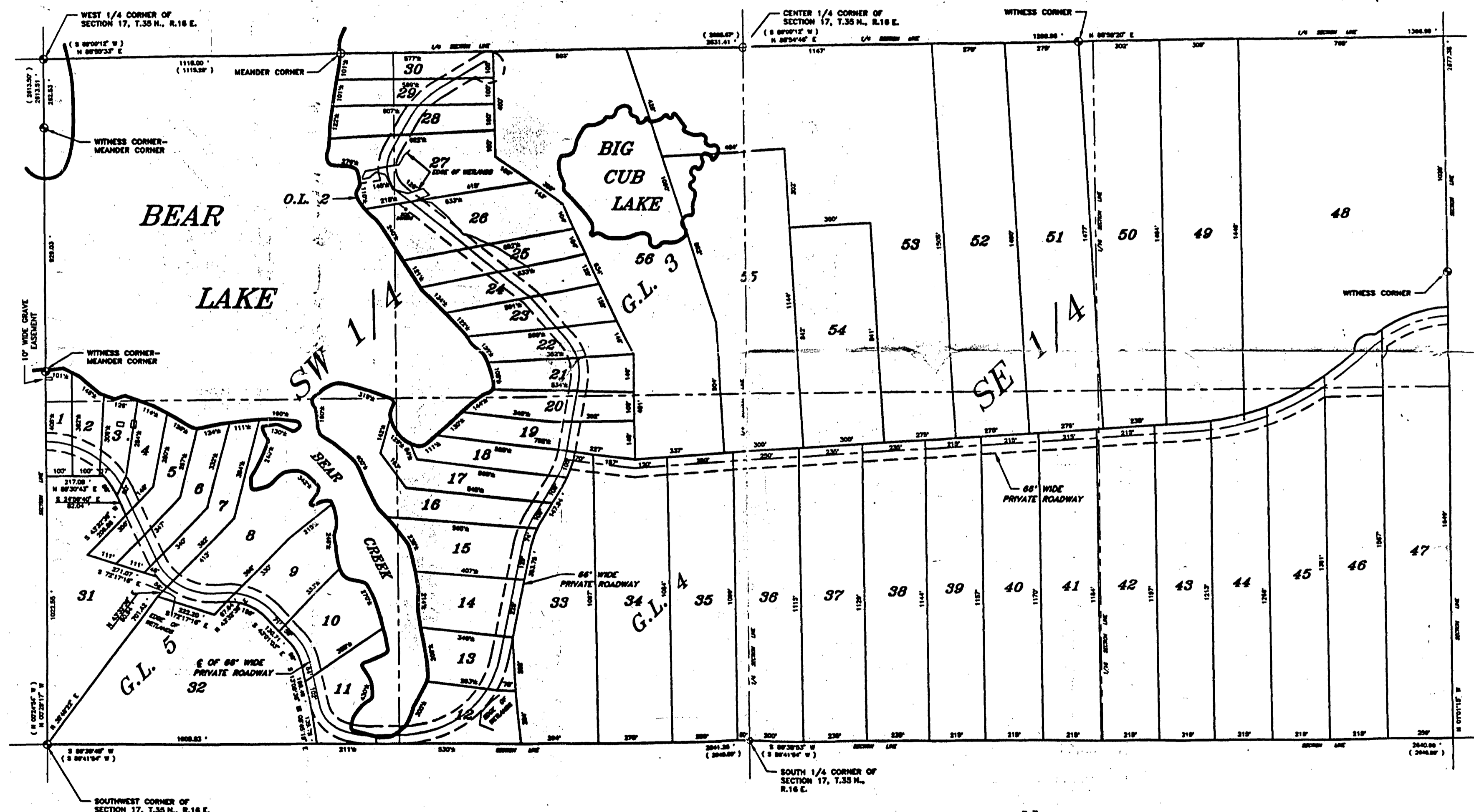


FEB - 7 2003



**NORDIN & ASSOC., INC.**  
 PROFESSIONAL LAND SURVEYORS  
 15841 STATE HWY. "47-55" SHAWANO, WI 54186  
 (715) 528-3638 FAX (715) 524-9922

BEAR LAKE PRELIMINARY LOT LAYOUT,  
 LOCATED IN SECTION 17, T.35 N., R.16 E.,  
 TOWN OF BLACKWELL, FOREST COUNTY, WI.

DATE	BY	SCALE	BY
7/25/2003	CLIFF	AS SHOWN	S. L. C.
		9/29/2004	11775