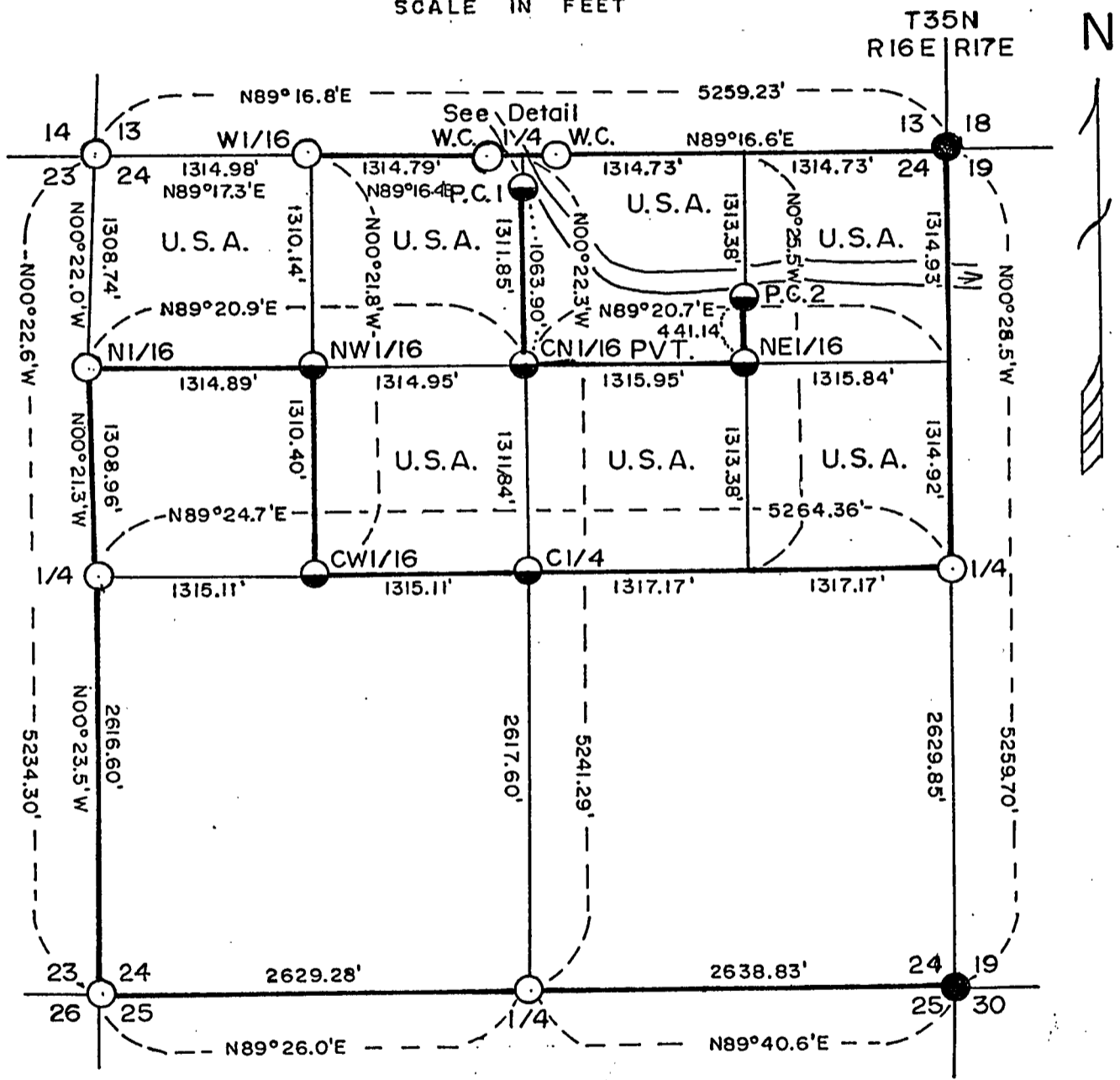
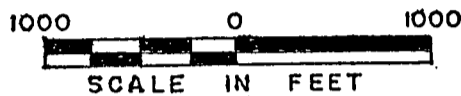


PLAT OF SURVEY

U. S. GOVERNMENT LANDS

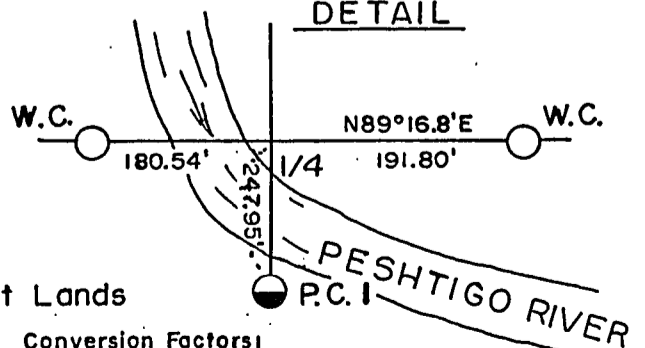
Being the NW1/4, NW1/4; E1/2, NW1/4; NE1/4, NE1/4; S1/2, NE1/4 and that part of the NW1/4, NE1/4 North of the Peshtigo River of Section 24, Township 35 North, Range 16 East, 4th P. M. FOREST COUNTY, WISCONSIN



LEGEND

- 4" X 36" Iron Pipe With Brass Cap
- 2 1/2" X 36" Aluminum Monument
- ◐ 1" X 36" Aluminum Monument
- Marked Boundary Lines, U. S. Government Lands

DETAIL



Conversion Factors:
 Feet to Meters — 3.280833
 Meters to Feet — 0.304801

Stock No. 26273

Sheet 2 of 5

SURVEY NOTES

This survey was made by Milo E. Stefan, a Registered Land Surveyor in the State of Wisconsin, under contract to the U. S. Department of Agriculture, Forest Service, for the purpose of restoring and establishing corners on the perimeter of Section 24, for establishing the boundaries of U. S. Government land on the perimeter and within Section 24, Township 35 North, Range 16 East, Fourth Principal Meridian, Forest County, Wisconsin.

The U. S. Government lands in this section were acquired in 1935, 1978 and 1979.

The Range Line being established in 1857 by Artemas Curtis. The original Government subdivision survey of this township was made in 1858 by James McBride.

The corner positions recovered, restored and established by this survey are marked by the monument described in the map legend.

The corner positions established were located to an accuracy of one part in 3000.

The bearings between corner positions are true bearings as determined by solar observations. This survey is orientated with the solar observations by Kim Pritzlaff on the north side of Section 24.

The field notes of this survey and a copy of this plat are on file in the Forest Supervisor's Office at Rhinelander, Wisconsin.

CORNERS RECOVERED AND RESTORED

1. Section Corner to Sections 13, 14, 23 and 24, T.35N., R.16E.
Corner monumented by Milo E. Stefan, R.L.S. Certificate on file in Forest County, Document No. 129850.
2. Section Corner to Sections 13, 18, 19 and 24, T.35N., R.16 - 17E.
Corner monumented by J. J. Jenkins in 1935. Corner restored by Jean F. Resvick, R.L.S., in 1969. Certificate on file in Forest County, Document No. 98045. We found corner needing bearing trees.
Corner references:

Rock Elm	5"	N24°E	16.56 Feet
Rock Elm	8"	N43°E	39.29 Feet
Rock Elm	4"	S82°W	35.99 Feet
Red Pine	6"	N14°W	53.72 Feet
Steel Sign Post		Northwest	1.40 Feet
3. Section Corner to Sections 23, 24, 25 and 26, T.35N., R.16E.
Corner monumented by Milo E. Stefan, R.L.S. Certificate on file in Forest County, Document No. 119860.
4. Section Corner to Sections 19, 24, 25 and 30, T.35N., R.16 - 17E.
Corner monumented by Jean F. Resvick, R.L.S. Certificate on file in Forest County, Document No. 109583.

Stock No. 26273

Sheet 3 of 5

5. Quarter Corner to Sections 13 and 24, T.35N., R.16E.

Corner falls in river. Witness Corners established by Kim Pritzlaff, R.L.S. Certificate on file in Forest County, Document No. 128596. Note distance to East Witness Corner is in error on this certificate. The distance should read 191.80 feet.

6. Quarter Corner to Sections 23 and 24, T.35N., R.16E.

Corner restored and monumented by Milo E. Stefan, R.L.S., by proportionate measure between the Section Corners to the North and South. A "Certified Land Corner Restoration and Boundary Establishment" is on file with the County Clerk in Forest County.

Corner references:

Sugar Maple	6"	N24°E	29.35 Feet
Black Cherry	6"	S17°E	24.36 Feet
Sugar Maple	8"	S74°W	39.16 Feet
Steel Sign Post		North	2.70 Feet

7. Quarter Corner to Sections 19 and 24, T.35N., R.16 - 17E.

Corner was monumented by J. J. Jenkins in 1934 - 1935. This survey indicates the corner was set in error by 10.60 feet. In consultation with the Marinette County Surveyor, Jerome Pillath, we restored this corner by proportionate measure between the Section Corners North and South.

Corner references:

Sugar Maple	16"	N28°E	40.54 Feet
Sugar Maple	16"	S32°E	4.35 Feet
Sugar Maple	10"	S49°W	24.84 Feet
Sugar Maple	10"	N07°W	21.57 Feet
Steel Sign Post		Northwest	2.10 Feet
Old Monument	4" I.P./B.C.	N06°-07.9'E	10.60 Feet

8. Quarter Corner to Sections 24 and 25, T.35N., R.16E.

We restored this corner from a perpetuated position marked by a Cedar Post and post hole.

Corner references:

Red Pine	6"	N77°E	29.25 Feet
Red Pine	6"	S26°E	18.92 Feet
Red Pine	6"	S48°W	27.78 Feet
Red Pine	7"	N06°E	24.89 Feet
Steel Sign Post		Southwest	1.40 Feet

9. North Sixteenth Corner Between Sections 23 and 24, T.35N., R.16E.

Corner monumented by Milo E. Stefan, R.L.S. A "Certified Land Corner Restoration and Boundary Establishment" is on file with the County Clerk in Forest County.

Corner references:

Sugar Maple	6"	N43°W	2.73 Feet
Sugar Maple	6"	N89°W	25.18 Feet
Sugar Maple	5"	S42°W	22.45 Feet
Steel Sign Post		South	2.80 Feet

Stock No. 26273

Sheet 4 of 5

CORNERS ESTABLISHED1. Center Quarter Corner to Section 24, T.35N., R.16E.

We established this corner at the intersection of the North - South and East - West Quarter Lines to Section 24.

Corner references:

Sugar Maple	6"	N77°E	26.45 Feet
Sugar Maple	6"	South	10.01 Feet
Sugar Maple	6"	N50°W	18.47 Feet
Steel Sign Post		Northwest	1.70 Feet

2. Northwest Sixteenth Corner to Section 24, T.35N., R.16E.

We established this corner at the intersection of the North and West Sixteenth Lines to Section 24.

Corner references:

Red Pine	4"	S26°E	42.10 Feet
Sugar Maple	6"	N80°W	66.81 Feet
Basswood	6"	N67°W	43.30 Feet
Steel Sign Post		Northeast	1.30 Feet

3. Center North Sixteenth Corner to Section 24, T.35N., R.16E.

We established this corner at midpoint and on line between the Center Quarter Corner and the North Quarter Corner to Section 24.

Corner references:

Sugar Maple	6"	S55°E	44.36 Feet
Basswood	6"	N87°W	33.93 Feet
Red Pine	10"	N33°W	58.94 Feet
Steel Sign Post		Southeast	1.20 Feet

4. Northeast Sixteenth Corner to Section 24, T.35N., R.16E.

We established this corner at the intersection of the North and East Sixteenth Lines to Section 24.

Corner references:

Rock Elm	4"	N44°E	37.96 Feet
Basswood	4"	N41°W	64.69 Feet
Cedar Plantation Post	6" x 6" x 5'	N12°E	13.03 Feet
Steel Sign Post		Southeast	1.00 Foot

5. Center West Sixteenth Corner to Section 24, T.35N., R.16E.

We established this corner at midpoint and on line between the Center Quarter Corner and the West Quarter Corner to Section 24.

Corner references:

Red Maple	10"	S13°W	24.86 Feet
Sugar Maple	4"	S34°W	23.66 Feet
Basswood	6"	N28°W	23.85 Feet
Steel Sign Post		Northeast	1.50 Feet

6. Property Corner No. 1 to Section 24, T.35N., R.16E.

We established this corner at the intersection of the North - South Quarter Line and the Peshtigo River.

Corner references:

Red Pine	4"	S45°W	41.02 Feet
Red Pine	10"	N79°W	16.08 Feet
Steel Sign Post		Southwest	1.30 Feet

Stock No. 26273

Sheet 5 of 5

7. Property Corner No. 2 to Section 24, T.35N., R.16E.

We established this corner at the intersection of the East Sixteenth Line and the Peshtigo River.

Corner references:

White Spruce(Double) 10"	S26°E	27.14 Feet
Black Cherry(Triple) 12"	S52°W	27.04 Feet
Steel Sign Post	Southeast	1.40 Feet

SURVEYOR'S AFFIDAVITSTATE OF WISCONSIN)
FOREST COUNTY)SS

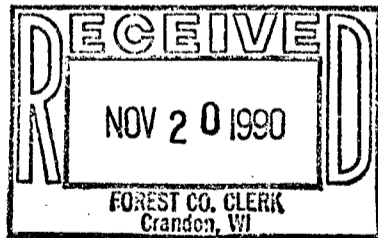
I, Milo E. Stefan, Registered Land Surveyor in the State of Wisconsin hereby certify: that I have surveyed and subdivided Section 24, Township 35 North, Range 16 East, Fourth Principal Meridian, Forest County, Wisconsin.

The Plat Map and notes are a correct representation of the corners recovered, restored and established. I have restored and recovered and established these corners in accordance with the rules of survey of the public lands and with the Statutes of the State of Wisconsin.



Milo E. Stefan, RLS No. 1558
Rhineland, Wisconsin

Date of Survey: 1990



Plat ready for filing:



District Ranger