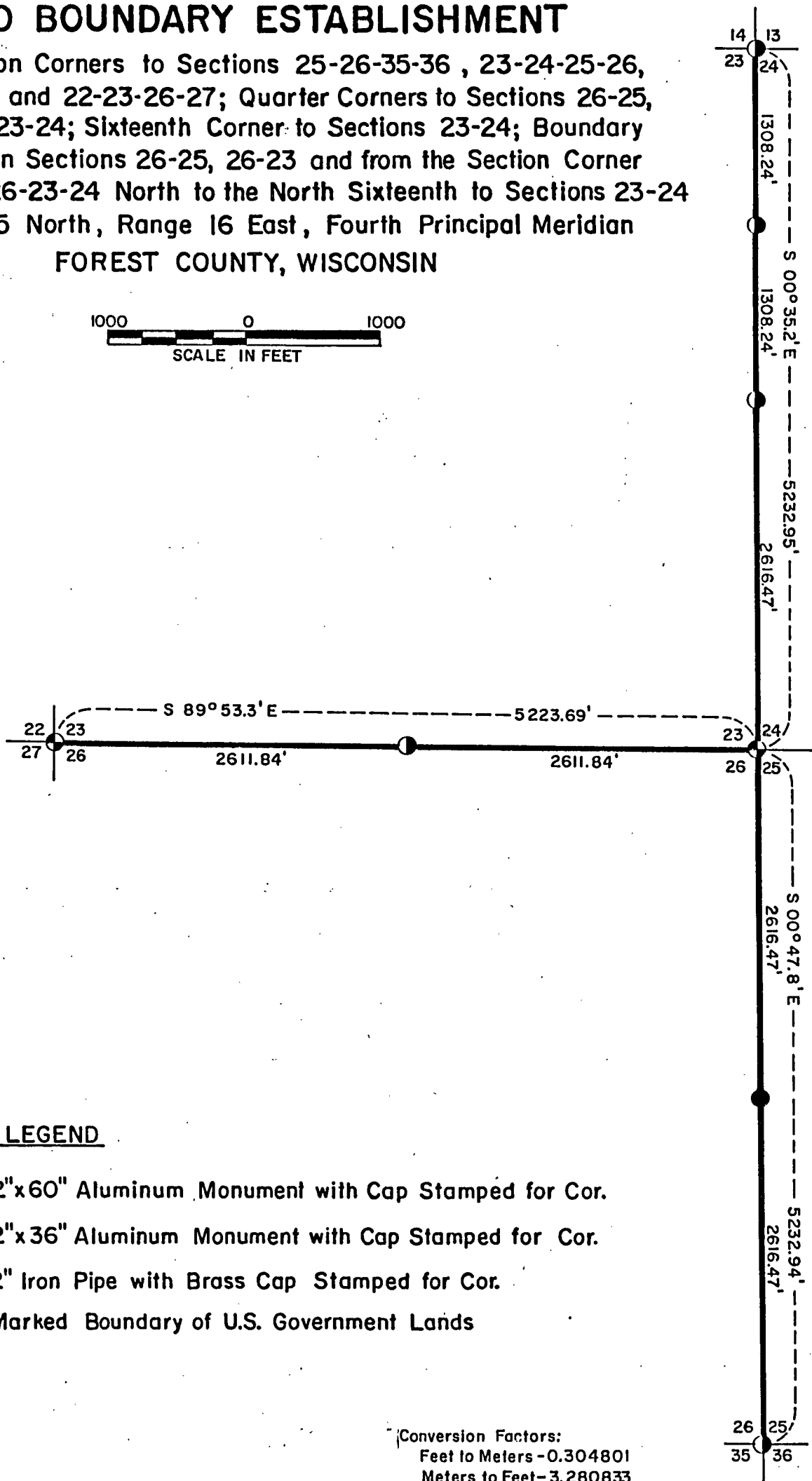
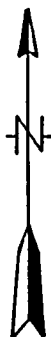


# CERTIFIED LAND CORNER RESTORATION AND BOUNDARY ESTABLISHMENT

Being Section Corners to Sections 25-26-35-36 , 23-24-25-26,  
13-14-23-24 and 22-23-26-27; Quarter Corners to Sections 26-25,  
26-23 and 23-24; Sixteenth Corner to Sections 23-24; Boundary  
Line Between Sections 26-25, 26-23 and from the Section Corner  
to Sections 25-26-23-24 North to the North Sixteenth to Sections 23-24  
Township 35 North, Range 16 East, Fourth Principal Meridian  
FOREST COUNTY, WISCONSIN



**LEGEND**

- 2"x60" Aluminum Monument with Cap Stamped for Cor.
- 2"x36" Aluminum Monument with Cap Stamped for Cor.
- ⊕ 2" Iron Pipe with Brass Cap Stamped for Cor.
- Marked Boundary of U.S. Government Lands

Conversion Factors:  
Feet to Meters - 0.304801  
Meters to Feet - 3.280833

Stock No. 26273

Sheet 2 of 3

SURVEY NOTES

This survey was made by the U. S. Department of Agriculture, Forest Service, for the purpose of restoring and establishing corners on the perimeter and for locating and marking the boundaries of U. S. Government land on the perimeter of Sections 23 and 25, Township 35 North, Range 16 East, Fourth Principal Meridian, Forest County, Wisconsin.

The U. S. Government lands in this section were acquired in 1934 and 1935.

The original Government subdivision survey of this township was made in 1858.

The corner positions recovered, restored, and established by this survey are marked by the monument described in the map legend.

The corner positions established were located to an accuracy of one part in 3000.

The bearings between corner positions are true bearings as determined by solar observations.

The field notes of this survey and a copy of this plat are on file in the Forest Supervisor's Office at Rhinelander, Wisconsin.

CORNERS RECOVERED AND RESTORED

1. Corner to Sections 22, 23, 26, and 27, T.35N., R.16E.  
Corner monumented by Milo E. Stefan, R.L.S. Certificate on file.
2. Corner to Sections 23, 24, 25, and 26, T.35N., R.16E.  
Corner monumented by Milo E. Stefan, R.L.S. Certificate on file.
3. Corner to Sections 13, 14, 23, and 24, T.35N., R.16E.  
Corner found marked by 6" x 6" wood post with location poster--from which the remains of three of the original BT stumps were found.  
Corner References:

|                 |    |         |            |
|-----------------|----|---------|------------|
| Sugar           | 8" | N.25°E. | 23.42 feet |
| White Ash       | 8" | S.37°E. | 31.95 feet |
| Sugar           | 8" | S.52°W. | 20.93 feet |
| Sugar           | 6" | N.43°W. | 47.81 feet |
| Steel Sign Post |    | North   | 2.20 feet  |

4. Corner to Sections 25, 26, 35, and 36, T.35N., R.16E.  
Corner found marked by post hole and the remains of the original BTs.  
Corner References:

|                 |     |         |            |
|-----------------|-----|---------|------------|
| Basswood        | 8"  | N.9°E.  | 23.00 feet |
| Black Cherry    | 10" | S.61°E. | 35.52 feet |
| Basswood        | 6"  | S.41°W. | 44.86 feet |
| Sugar           | 6"  | N.62°W. | 34.63 feet |
| Steel Sign Post |     | North   | 1.10 feet  |

Stock No. 26273

Sheet 3 of 3

5. Quarter Corner to Sections 23 and 24, T.35N., R.16E.  
Corner restored by single proportionate measure.  
Corner References:

|                 |    |         |       |      |
|-----------------|----|---------|-------|------|
| Sugar           | 6" | N.24°E. | 29.35 | feet |
| Black Cherry    | 6" | S.17°E. | 24.36 | feet |
| Sugar           | 8" | S.74°W. | 39.16 | feet |
| Steel Sign Post |    | North   | 2.70  | feet |

6. Quarter Corner to Sections 23 and 26, T.35N., R.16E.  
Corner restored by single proportionate measure.  
Corner References:

|                 |     |         |        |      |
|-----------------|-----|---------|--------|------|
| Red Pine        | 14" | N.32°W. | 101.64 | feet |
| Hemlock         | 22" | N.87°E. | 40.03  | feet |
| Basswood        | 7"  | S.23°W. | 16.16  | feet |
| Steel Sign Post |     | North   | 2.60   | feet |

7. Quarter Corner to Sections 25 and 26, T.35N., R.16E.  
Corner restored by single proportionate measure.  
Corner References:

|                 |    |         |       |      |
|-----------------|----|---------|-------|------|
| Tamarack        | 4" | S.48°E. | 3.63  | feet |
| Tamarack        | 6" | S.13°W. | 28.61 | feet |
| Tamarack        | 4" | N.55°W. | 12.25 | feet |
| Steel Sign Post |    | South   | 2.13  | feet |

CORNER ESTABLISHED

1. North One-Sixteenth Corner to Sections 23 and 24.  
Corner established midpoint and on line between the northeast section corner and east quarter corner to Section 23.  
Corner References:

|                 |    |         |       |      |
|-----------------|----|---------|-------|------|
| Sugar           | 6" | N.43°W. | 2.73  | feet |
| Sugar           | 5" | S.42°W. | 22.45 | feet |
| Sugar           | 6" | N.89°W. | 25.18 | feet |
| Steel Sign Post |    | South   | 2.80  | feet |

SURVEYOR'S AFFIDAVIT

State of Wisconsin ]  
County of Forest ] SS

I, Milo E. Stefan, Cadastral Surveyor, U. S. Forest Service and a registered surveyor in the State of Wisconsin, hereby certify that I have surveyed Sections 23 and 25, Township 35 North, Range 16 East, Fourth Principal Meridian, State of Wisconsin.

The plat map and the notes herewith are a correct representation of the land surveyed and divided. I have surveyed and subdivided said section in accordance with the rules for survey of the public lands and with the statutes of the State of Wisconsin.



*Milo E. Stefan*  
Cadastral Surveyor, U. S. Forest Service  
R.L.S., State of Wisconsin  
Certificate S-1558

Plat Ready For Filing:

*Dale D. Starg*  
District Ranger

Date of Survey: 1983