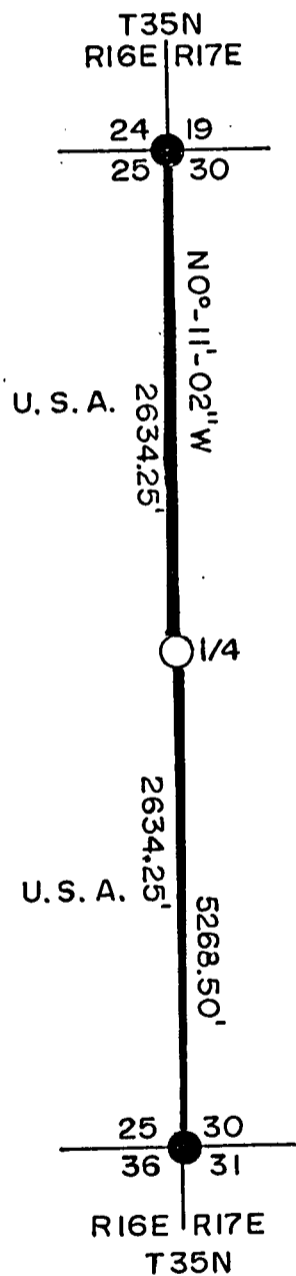
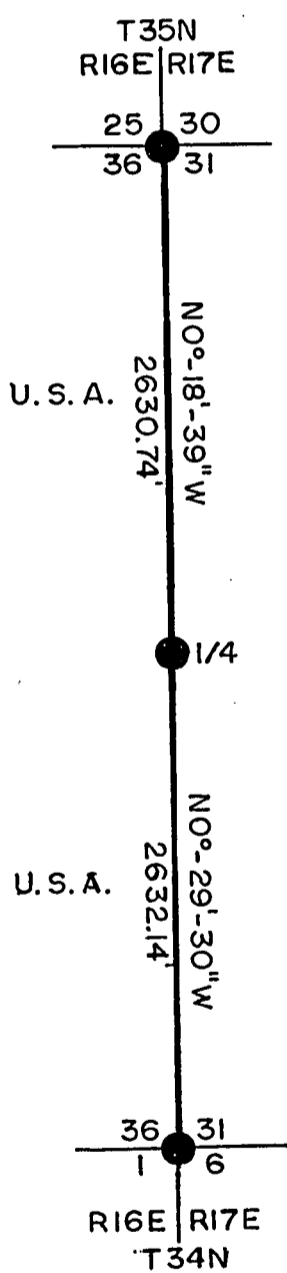


CERTIFIED LAND BOUNDARY ESTABLISHMENT AND CORNER RESTORATION U. S. GOVERNMENT LANDS

Being the Boundary on the East Side of Sections 25 and 36
Township 35 North, Range 16 East, Fourth Principal Meridian
FOREST COUNTY, WISCONSIN



LEGEND

- 4" X 36" Iron Pipe With Brass Cap
- 2 1/2" X 36" Aluminum Monument
- Marked Boundary Lines, U. S. Government Lands

Conversion Factors:
Feet to Meters - 3.280833
Meters to Feet - 0.304801

Stock No. 26273

Sheet 2 of 3

SURVEY NOTES

This survey was made by Milo E. Stefan, a Registered Land Surveyor in the State of Wisconsin, under contract to the U. S. Department of Agriculture, Forest Service, for the purpose of restoring corners and establishing the boundaries of U. S. Government land on the East side of Sections 25 and 36, Township 35 North, Range 16 East, Fourth Principal Meridian, Forest County, Wisconsin.

The U. S. Government Lands in this Section were acquired in 1935.

The original Government subdivision survey of this range line was made in 1857 by Artemas Curtis.

The corner positions recovered, restored and established by this survey are marked by the monument described in the map legend.

The corner positions established were located to an accuracy of one part in 3000.

The bearings between corner positions are true bearings as determined by solar observations. This survey is orientated with the sola observations by Kim Pritzlaff on the north side of Section 24.

The field notes of this survey and a copy of this plat are on file in the Forest Supervisor's Office at Rhinelander, Wisconsin.

CORNERS RECOVERED AND RESTORED

1. Section Corner to Sections 19, 24, 25 and 30, T.35N., R.16-17E.
Corner monumented by J. J. Jenkins in 1934 or 1935 and restored by Jean F. Resvick on June 15, 1976. Certificate on file in Forest County, Document No. 109583.
2. Section Corner to Sections 25, 36, 30 and 31, T.35N., R.16-17E.
Corner monumented by J. J. Jenkins in 1934 or 1935 and restored by Jean F. Resvick on September 22, 1976. We found the Southwest bearing tree and no sign post.
Corner references:

Sugar Maple	12"	N 44°E	28.80 Feet
Sugar Maple	10"	S 42°E	14.13 Feet
Basswood	8"	S 30°W	18.90 Feet
Basswood	12"	N 2°W	29.91 Feet
Steel Sign Post		Northwest	2.0 Feet
3. Township Corner to Townships 34 - 35 North, Range 16 - 17 East.
Corner was monumented by Frank Gould in 1934. It was restored by Milo E. Stefan on June 30, 1981. Certificate filed in Forest County, Document No. 127247.
4. Quarter Corner to Sections 31 and 36, T.35N., R.16-17E.
Corner was monumented by Frank Gould in 1934 - 1935 and restored by Al Harrison in 1989. Certificate filed in Forest County, Document No. 138857.

Stock No. 26273

Sheet 3 of 3

5. Quarter Corner to Sections 25 and 30, T.35N., R.16-17E.

Corner was monumented by J. J. Jenkins in 1934 - 1935. This survey indicates the corner was set in error by 3.56 feet. In consultation with Marinette County Surveyor, Jerome Pillath, we restored this corner by proportionate measure between the Section Corners North and South.

Corner references:

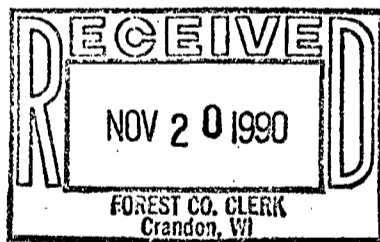
Sugar Maple	8"	N 16°E	30.65 Feet
Sugar Maple	8"	S 9°E	32.69 Feet
Sugar Maple	8"	S 47°E	51.54 Feet
Sugar Maple	8"	S 49°W	41.76 Feet
Steel Sign Post		Northwest	1.4 Feet
Old Monument	4" I.P./B.C.S	13°-59.2'E	3.56 Feet

SURVEYOR'S AFFIDAVIT

STATE OF WISCONSIN)
FOREST COUNTY)SS

I, Milo E. Stefan, Registered Land Surveyor in the State of Wisconsin hereby certify: that I have surveyed the East side of Sections 25 and 36, Township 35 North, Range 16 East, Fourth Principal Meridian, Forest County, Wisconsin.

The Plat Map and notes are a correct representation of the corners recovered, and restored. I have restored and recovered these corners in accordance with the rules of survey of the public lands, and with the Statutes of the State of Wisconsin.



Milo E. Stefan

Milo E. Stefan, RLS No. 1558
Rhineland, Wisconsin

Date of Survey: 1990



Plat ready for filing:

Dale S. Staeger
District Ranger