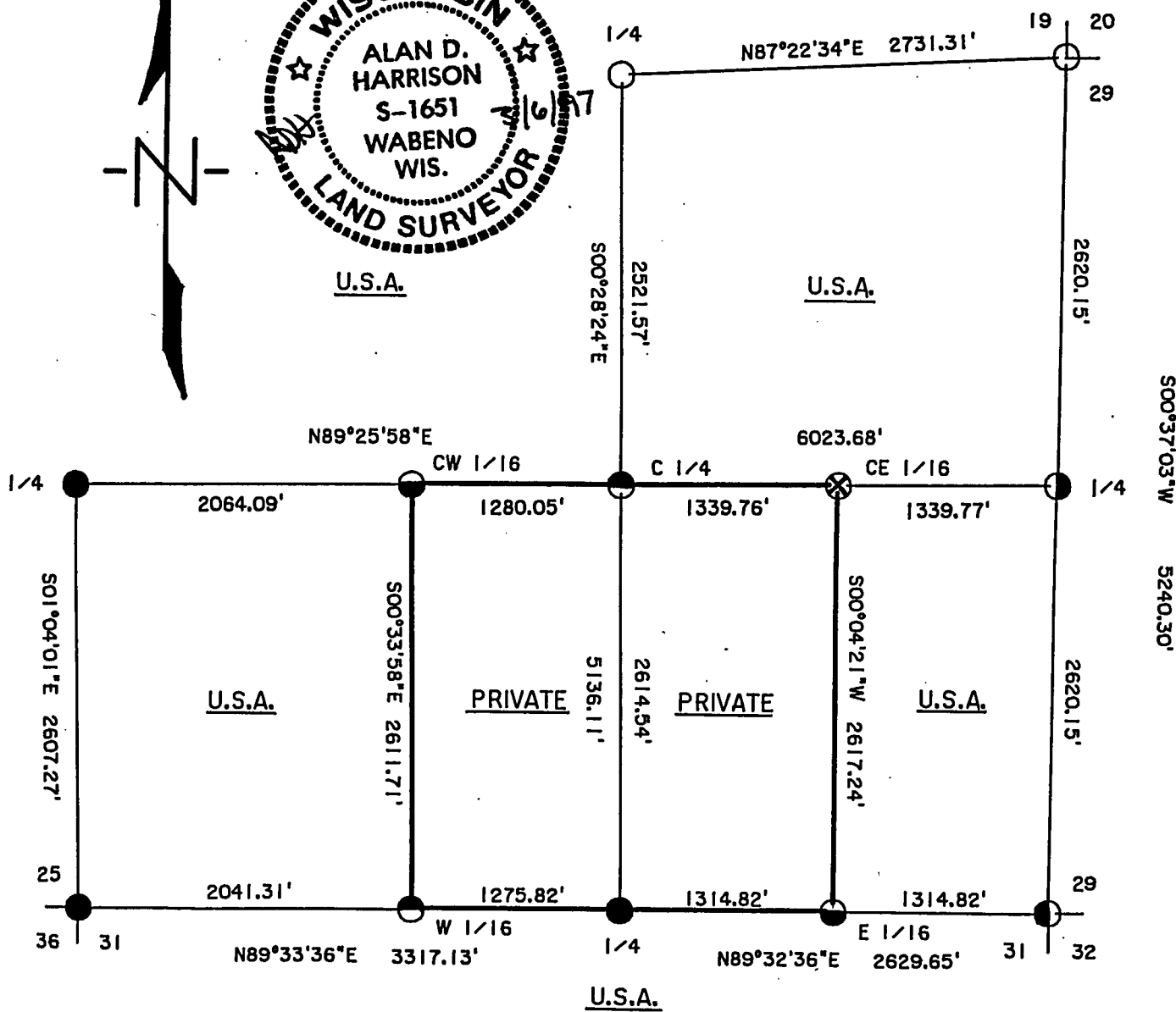
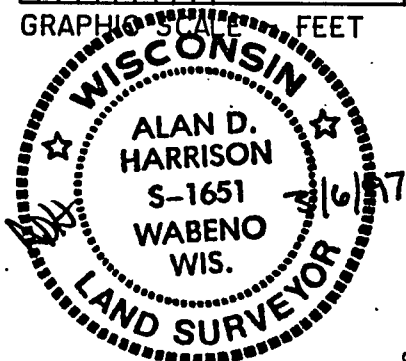
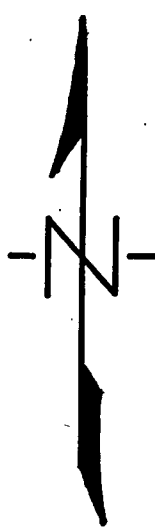
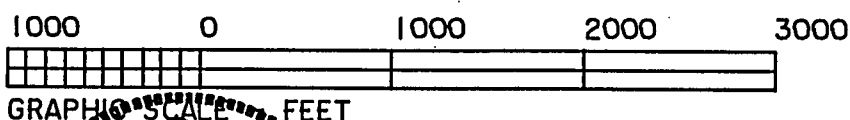


PLAT OF SURVEY

U.S. GOVERNMENT LANDS

BEING THE NORTH 1/2; EAST 1/2, S.E. 1/4; AND WEST 1/2,
S.W. 1/4; SECTION 30; T.35 N., R.16 E., FOURTH PRINCIPAL MERIDIAN,
FOREST COUNTY, WISCONSIN.



LEGEND

- 2" BRASS CAPPED IRON MONUMENT, FOUND IN PLACE.
- 2 1/2" ALUMINUM MONUMENT, FOUND IN PLACE.
- ◐ 2 1/2" X 36" ALUMINUM MONUMENT, SET THIS SURVEY.
- ◑ 2 1/2" X 60" ALUMINUM MONUMENT, SET THIS SURVEY.
- ◒ 1" X 36" ALUMINUM MONUMENT, SET THIS SURVEY.
- ◓ 1" X 60" ALUMINUM MONUMENT, SET THIS SURVEY.
- ⊗ (X) CHISELED IN .2' X 2' ROCK, SET THIS SURVEY.
- MARKED BOUNDARY LINE OF U.S. GOVERNMENT LANDS.

SURVEY NOTES

This survey was made by the U.S. Department of Agriculture, Forest Service, for the purpose of restoring and establishing corners of the perimeter of Section 30, for establishing subdivisional corners within Section 30 and for locating and marking the boundaries of U.S. Government land on the perimeter and within Section 30, Township 35 North, Range 16 East, 4th Principal Meridian, Forest County, Wisconsin.

The U.S. Government lands in Section 30 were acquired in 1934, 1935 and 1938.

The original government subdivision survey of this township was in 1858.

The corner positions recovered, restored and established by this survey are marked by the monument described in the map legend.

The field notes of this survey and a copy of this plat are on file in the Forest Supervisor's Office at Rhinelander, Wisconsin.

The corner positions established were located to an accuracy of one part in 5,000.

The bearings between corner positions are grid bearings as determined by Global Positioning Satellite observations.

Wisconsin North Zone State Plane Coordinates were computed from G.P.S. observations in October 1995.

Distances on plat are shown in grid measurement. Conversion between ground distance and grid distance are performed by the following formula.

Grid Distance/ Grid Scale Factor X (20,906,000/[20,906,000+ Mean Elev.]) = Ground Distance.

COORDINATE VALUES ON N.A.D. 1983 (91)

CORNER CODE	NORTH LATITUDE	WEST LONGITUDE	STATE PLANE COORDINATES		CONV. ANGLE	SCALE FACTOR
			NORTH	EAST		
NE	45°29'31.27"	88°31'40.43"	122,136.584	2,346,018.689	1°03'43"	1.000014387
SE	45°28'39.55"	88°31'42.59"	116,896.584	2,345,962.224	1°03'41"	1.000017348
SW	45°28'40.17"	88°33'06.04"	116,850.143	2,340,015.626	1°02'41"	1.000017312
N 1/4	45°29'30.53"	88°32'18.76"	122,011.551	2,343,290.239	1°03'15"	1.000014429
E 1/4	45°29'05.41"	88°31'41.51"	119,516.584	2,345,990.462	1°03'42"	1.000015860
S 1/4	45°28'39.82"	88°32'19.49"	116,875.620	2,343,332.662	1°03'15"	1.000017332
W 1/4	45°29'05.91"	88°33'06.05"	119,456.965	2,339,967.082	1°02'41"	1.000015831
C 1/4	45°29'05.64"	88°32'19.12"	119,490.071	2,343,311.062	1°03'15"	1.000015847
W 1/16	45°28'39.96"	88°32'37.39"	116,865.819	2,342,056.876	1°03'02"	1.000017324
E 1/16	45°28'39.69"	88°32'01.04"	116,886.099	2,344,647.445	1°03'28"	1.000017340
CW 1/16	45°29'05.74"	88°32'37.08"	119,477.399	2,342,031.071	1°03'02"	1.000015840
CE 1/16	45°29'05.52"	88°32'00.31"	119,503.334	2,344,650.759	1°03'29"	1.000015853

CORNERS RECOVERED OR RESTORED

1. Corner Common to Sections 19, 20, 29 and 30.

Corner found monumented by Jean Resvick, R.L.S. Certificate on file in Forest County Courthouse.

2. Corner Common to Sections 29, 30, 31 and 32.

Corner restored using double proportionate methods between the Northeast Corner of Section 30 and the East Quarter Corner of Section 31 and between the South Quarter Corner of Section 30 and the South Quarter Corner of Section 29. Corner Certification on file in Forest County Courthouse.

Corner References:

Balsam	5'	N.51°E.	13.01 feet
Balsam	5'	S.18°E.	26.88 feet
Cedar	12'	S.60°W.	38.44 feet
Cedar	11'	N.68°W.	48.64 feet
Steel Sign Post		East	0.50 feet

3. Corner Common to Sections 30, 31, 25 and 36, R.15-16 E.

Corner found monumented by William Cochrane, R.L.S. Cut down bearing trees for G.P.S. observations. New certificate on file in Forest County Courthouse.

New Corner References:

Balsam	9'	N.05°E.	39.40 feet
Aspen	12'	S.49°E.	41.35 feet
Black Spruce	9'	S.46°W.	64.35 feet
Aspen	16'	N.24°W.	25.84 feet
Steel Sign Post		North	0.50 feet

4. Quarter Corner Common to Sections 29 and 30.

Corner restored at mid-point and on line between the Northeast and Southeast Section Corners of Section 30.

Corner References:

Aspen	12'	N.67°E.	3.64 feet
Black Ash	5'	S.16°E.	18.12 feet
Black Ash	5'	S.12°W.	8.73 feet
Steel Sign Post		Southeast	0.90 feet

5. Quarter Corner Common to Sections 30 and 31.

Corner found monumented by Alan Harrison, R.L.S. Corner certificate on file in Forest County Courthouse.

6. Quarter Corner Common to Sections 25 and 30, R.15-16 E.

Corner found monumented by Alan Harrison, R.L.S. Corner certificate on file in Forest County Courthouse.

7. Quarter Corner Common to Sections 19 and 30.

Corner found monumented by Jean Resvick, R.L.S. Corner certificate on file in Forest County Courthouse.

CORNERS ESTABLISHED

1. Center Quarter Corner to Section 30.

Corner established at the intersection of straight lines between the opposing Quarter Corners on the perimeter of Section 30.

Corner References:

Balsam	7"	N.41°E.	47.30 feet
Balsam	8"	S.48°E.	17.48 feet
Balsam	6"	N.54°W.	8.77 feet
Steel Sign Post		East	0.50 feet

2. East One-Sixteenth Corner Common to Sections 30 and 31.

Corner established at mid-point and on line between the South Quarter Corner and Southeast Section Corner of Section 30.

Corner References:

Cedar	12"	N.47°E.	17.70 feet
Cedar	12"	S.58°E.	7.56 feet
Steel Sign Post		Southeast	0.80 feet

3. West One-Sixteenth Corner Common to Sections 30 and 31.

Corner established at proportionate distance and on line between the South Quarter Corner of Section 30.

Corner References:

Sugar Maple	8"	S.61°W.	62.03 feet
Sugar Maple	11"	N.87°W.	61.00 feet
Steel Sign Post		West	1.60 feet

4. Center-East One-Sixteenth Corner to Section 30

Corner established at mid-point and on line between the Center Quarter Corner and the East Quarter Corner of Section 30.

Corner References:

Red Maple	7"	N.87°E.	38.87 feet
1"x36" Ref. Mon.		West	1.38 feet
Red Maple	6"	N.15°W.	23.90 feet
Steel Sign Post		Northeast	1.20 feet

5. Center-West One-Sixteenth Corner to Section 30.

Corner established at proportionate distance and on line between the Center Quarter Corner and the West Quarter Corner of Section 30.

Corner References:

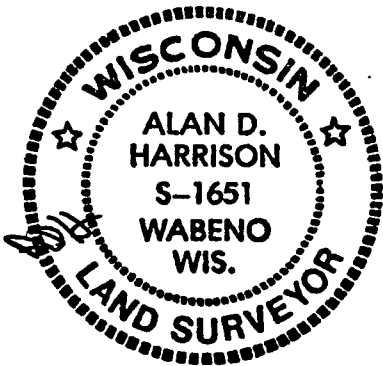
Balsam	6"	N.39°E.	12.20 feet
Cedar	11"	S.03°E.	63.93 feet
Cedar	12"	S.61°W.	40.07 feet
Steel Sign Post		Northwest	0.80 feet

SURVEYOR'S AFFIDAVIT

State of Wisconsin]
County of Forest]

I, Alan D. Harrison, Land Surveyor, U.S.D.A. Forest Service and a Registered Land Surveyor in the State of Wisconsin, do hereby certify that I have surveyed and subdivided Section 30, Township 36 North, Range 15 East, Fourth Principal Meridian, State of Wisconsin.

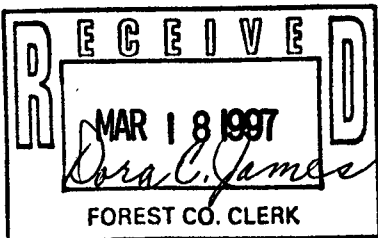
The plat map and the notes herewith are a correct representation of the land surveyed and divided. I have surveyed and subdivided said section in accordance with the rules for survey of the public lands and with the statutes of the State of Wisconsin.



Alan D. Harrison
LAND SURVEYOR, U.S.D.A. Forest Service
R.L.S. Number S-1651
State of Wisconsin

Date of Survey: 1996

Plat Ready for Filing:



Dora C. James
District Ranger