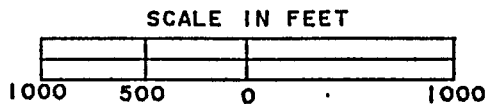


# PLAT OF SURVEY

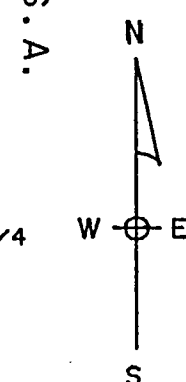
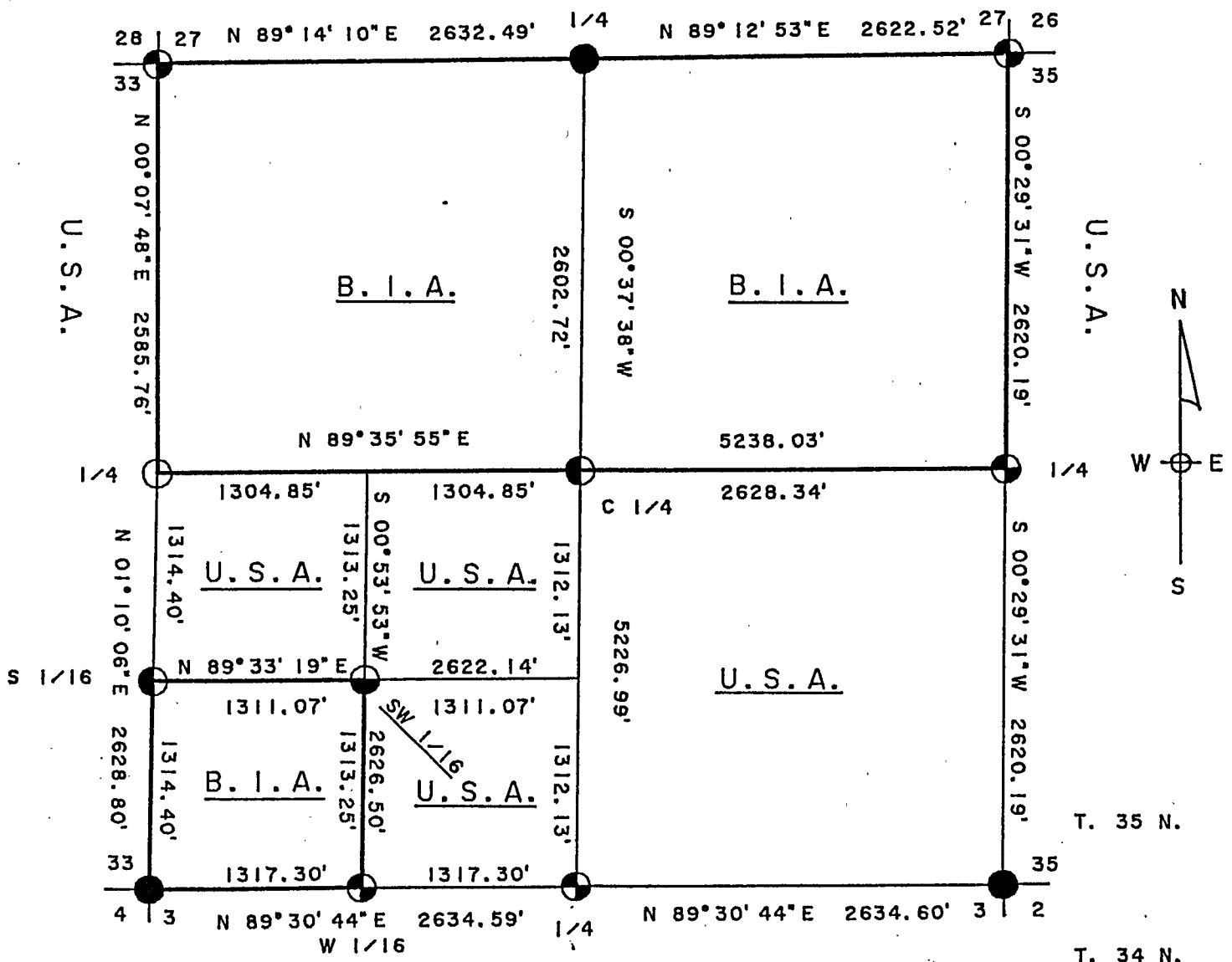
## U. S. GOVERNMENT LANDS

BEING THE S. E. 1/4; THE E. 1/2 AND N. W. 1/4, S. W. 1/4;  
SECTION 34, TOWNSHIP 35 NORTH, RANGE 16 EAST  
FOURTH PRINCIPAL MERIDIAN,  
FOREST COUNTY, WISCONSIN.



U. S. A.

U. S. A.



LEGEND:

- 2" BRASS CAPPED MONUMENT, FOUND IN PLACE.
- 2" ALUMINUM MONUMENT, FOUND IN PLACE
- 2 1/2" X 36" ALUMINUM MONUMENT, SET THIS SURVEY.
- 1" X 36" ALUMINUM MONUMENT, SET THIS SURVEY.
- 1" X 60" ALUMINUM MONUMENT, SET THIS SURVEY.
- MARKED BOUNDARY LINE OF U. S. GOVERNMENT LANDS.

Stock No. 26273

Sheet 2 of 4

SURVEY NOTES

This survey was made by the U.S. Department of Agriculture, Forest Service, for the purpose of restoring and establishing corners on the perimeter of Section 34 for establishing subdivisional corners within Section 34, and for locating and marking the boundaries of U.S. Government land on the perimeter and within Section 34, Township 35 North, Range 16 East, Fourth Principal Meridian, Forest County, Wisconsin.

The U.S. Government lands in this section were acquired in 1934.

The original government subdivision survey of this township was made in 1857 and 1858.

The corner positions recovered, restored and established by this survey are marked by the monument described in the map legend.

The corner positions established were located to an accuracy of one part in 5000.

The bearings between corner positions are true bearings as determined by solar observations.

The field notes of this survey and a copy of this plat are on file in the Forest Supervisor's Office at Rhinelander, Wisconsin.

CORNERS RECOVERED AND RESTORED

1. Corner Common to Sections 3, 4, 33, and 34, T34-35N, R16E.  
Corner recovered by Alan Harrison, R.L.S. in 1983. Certificate on file in Forest County.
2. Corner Common to Sections 2, 3, 34, and 35, T34-35N, R16E.  
Corner recovered by Alan Harrison, R.L.S. in 1984. Certificate on file in Forest County.
3. Corner Common to Sections 26, 27, 34, and 35.  
Corner restored by double proportionate measure.  
Corner References:
 

Sugar	8"	N.12°E.	32.35 feet
Sugar	8"	S.63°E.	40.24 feet
Sugar	9"	S.63°W.	28.91 feet
Sugar	4"	N.33°W.	33.49 feet
Steel Sign Post		Northwest	0.65 feet
4. Corner Common to Sections 27, 28, 33, and 34.  
Corner restored by double proportionate measure.  
Corner References:
 

Sugar	20"	N.21°E.	16.69 feet
Sugar	11"	S.50°E.	25.54 feet
Sugar	9"	S.72°W.	24.20 feet
Sugar	12"	N.89°W.	18.92 feet
Steel Sign Post		South	1.87 feet

Stock No. 26273

Sheet 3 of 4

5. Quarter Corner Common to Sections 3 and 34, T34-35N, R16E.

Corner restored by single proportionate measure.

Corner References:

Tamarack	7"	N.05°E.	55.35 feet
Balsam	6"	S.65°E.	16.50 feet
Balsam	9"	S.52°W.	13.58 feet
Steel Sign Post		North	0.89 feet

6. Quarter Corner Common to Sections 34 and 35.

Corner restored by single proportionate measure.

Corner References:

Basswood	12"	N.51°E.	13.21 feet
Sugar	4"	S.33°E.	40.77 feet
Sugar	4"	N.48°W.	29.18 feet
Steel Sign Post		North	0.80 feet

7. Quarter Corner Common to Sections 27 and 34.

Corner recovered by Alan Harrison, R.L.S. in 1985. Certificate on file in Forest County.

8. Quarter Corner Common to Sections 33 and 34.

Corner recovered by Alan Harrison, R.L.S. in 1985. Certificate on file in Forest County.

CORNERS ESTABLISHED1. Center Quarter Corner to Section 34.

Corner established at the intersection of the center quarter lines of Section 34.

Corner References:

Sugar	6"	S.46°E.	31.96 feet
Sugar	13"	S.80°W.	32.00 feet
Steel Sign Post		East	0.59 feet

2. South Sixteenth Corner Common to Sections 33 and 34.

Corner established midpoint and on line between the southwest corner and west quarter corner of Section 34.

Corner References:

Aspen	5"	N.19°E.	17.91 feet
Sugar	6"	S.82°E.	52.27 feet
Steel Sign Post		Northwest	1.16 feet

3. West Sixteenth Corner common to Section 3 and 34.

Corner established midpoint and on line between the southwest corner and south quarter corner of Section 34.

Corner References:

Spruce	18"	S.64°E.	9.42 feet
B. Ash	11"	N.04°W.	11.90 feet
Steel Sign Post		Southwest	0.80 feet

4. Southwest Sixteenth to Section 34.

Corner established at the intersection of the south and west sixteenth line of Section 34.

Corner References:

Spruce	18"	S.71°E.	51.22 feet
B. Ash	4"	S.18°E.	9.47 feet
Steel Sign Post		Northeast	0.71 feet

Stock No. 26273

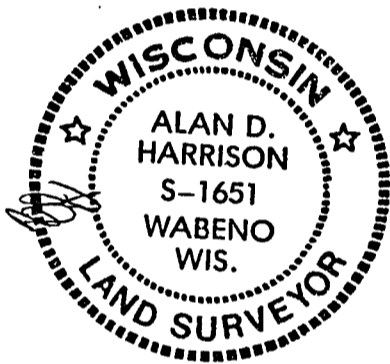
Sheet 4 of 4

SURVEYOR'S AFFIDAVIT

State of Wisconsin]  
 County of Forest ]

I, Alan D. Harrison, Land Surveyor, U.S.D.A. Forest Service and a Registered Land Surveyor in the State of Wisconsin, do hereby certify that I have surveyed and subdivided Section 34, Township 35 North, Range 16 East, Fourth Principal Meridian, State of Wisconsin.

The plat map and the notes herewith are a correct representation of the land surveyed and divided. I have surveyed and subdivided said section in accordance with the rules for survey of the public lands and with the statutes of the State of Wisconsin.



*Alan D. Harrison*  
 LAND SURVEYOR, U.S.D.A Forest Service  
 R.L.S. Number S-1651  
 State of Wisconsin

Plat ready for filing:

*Dale B. Staeger*  
 District Ranger

Date of Suvey: 1990

