

ISLAND PART OF ORIGINAL SHORE LINE

LITTLE RICE LAKE

A SURVEY OF THE SOUTH LINE OF LANDS OWNED BY STEVEN G. BOCEK, ETAL. AS RECORDED IN VOL. 158 RECORDS, PG. 784-785

1965±
1. ELEANOR BOCEK TO MEL SMITH RE-RECORDED VOL. 106 PG. 171(4/20/1920)
2. SMITH TO MARTIN THYSSEN VOL. 182 RECORDS, PG. 314

MARTIN THYSSEN VOL. 189 RECORDS, PG. 849 DESCRIBED AS WEST OF ROAD

PRESENT SHORELINE 2001-2002
APPROXIMATE ORIGINAL SHORE LINE IN 1950'S-1960'S

STEVE BOCEK, ETAL LANDS

SANITARY WASTE MOUND SYSTEM

FLOWAGE LANE

AREA DREDGED

SHEDS

181.40' (M)
165'± (D)

DECK

28'±

COTTAGE

13.8'

22'±

44.64' N84°34'35"E

10.5'

N84°34'35"E

161'±

80'±

149'±

89'±

876'± (M)

766' (D&M)

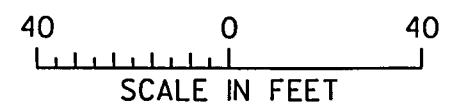
50' (D)

60' (D)



FOREST CO SURVEYOR
FILE # 361216-2002510
DATE _____ BY _____

LEGEND
• 3/4" X 24" IRON PIPE SET



ENCROACHMENT
DETAIL

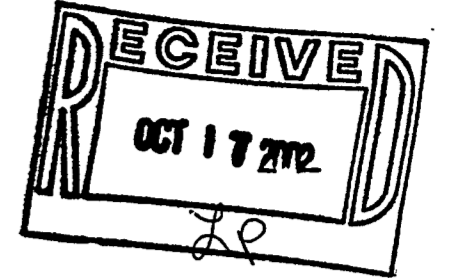


TRANSPORTATION • MUNICIPAL
DEVELOPMENT • ENVIRONMENTAL
1835 N. Stevens St. Rhinelander, WI 54981
715-342-3344 1-800-844-7854 Fax: 715-342-4114
© MSA PROFESSIONAL SERVICES

DRAWN BY CAR DATE 5/02 SHEET 3 of _____
CHECKED BY ECU SCALE AS SHOWN FILE NO. 980312b.dgn

A SURVEY OF SECTION 16, T. 36N., R. 12E., TOWN OF CRANDON, FOREST COUNTY, WISCONSIN

THIS SURVEY PREPARED FOR THE BOCEK FAMILY AND
STATE OF WISCONSIN, DEPARTMENT OF NATURAL RESOURCES.



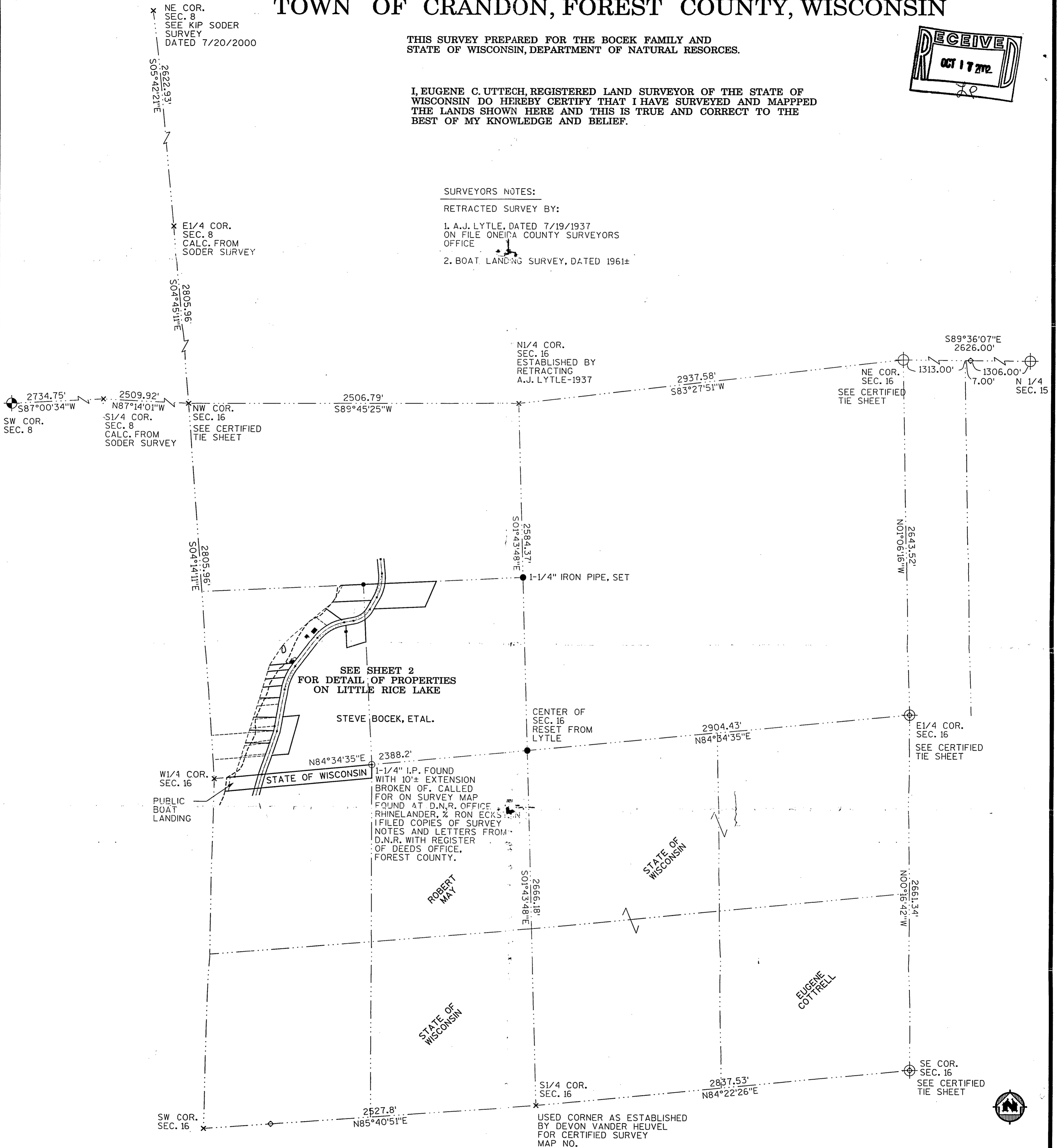
I, EUGENE C. UTTECH, REGISTERED LAND SURVEYOR OF THE STATE OF
WISCONSIN DO HEREBY CERTIFY THAT I HAVE SURVEYED AND MAPPED
THE LANDS SHOWN HERE AND THIS IS TRUE AND CORRECT TO THE
BEST OF MY KNOWLEDGE AND BELIEF.

SURVEYORS NOTES:

RETRACTED SURVEY BY:

1. A.J. LYTLE, DATED 7/19/1937
ON FILE ONEIDA COUNTY SURVEYORS
OFFICE

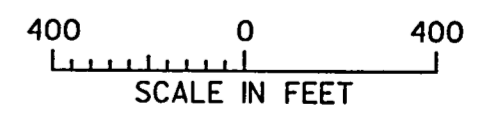
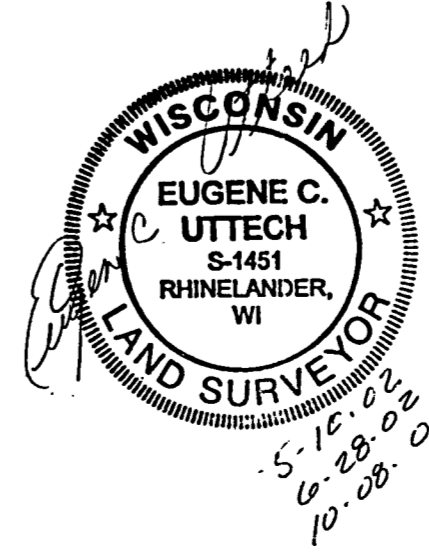
2. BOAT LANDING SURVEY, DATED 1961±



LEGEND

- ⊙ ALUM. FOREST COUNTY MON. FOUND
- ◇ IRON PIPE FOUND
- × CALCULATED POSITION
- ⊕ FOREST COUNTY MON. TO BE SET
- 1-1/4" X 4" IRON PIPE SET

FOREST CO SURVEYOR
FILE # 361216-2002510
DATE _____ BY _____



PLAT OF SURVEY	
BOCEK FAMILY	
STATE OF WISCONSIN	
MSA	
<small>TRANSPORTATION - MUNICIPAL DEVELOPMENT - ENVIRONMENTAL</small>	
<small>1831 N. Sherman St., Milwaukee, WI 53211 770.582.3214 800-441-7351 Fax: 770.582.4116 © MSA PROFESSIONAL SERVICE</small>	
DRAWN BY CAR	DATE 5/02
CHECKED BY ECU	SCALE AS SHOWN
SHEET 1 of 1	P.E. NO. 39222
380312G	

NW COR. SW1/4 OF NW1/4

LITTLE RICE LAKE

PRESENT SHORELINE 2001-2002
APPROXIMATE ORIGINAL SHORE LINE IN 1950'S-1960'S

ISLAND PART OF ORIGINAL SHORE LINE

A SURVEY OF THE SOUTH LINE OF LANDS OWNED BY STEVEN G. BOCEK, ETAL. AS RECORDED IN VOL. 158 RECORDS, PG. 784-785

1965+
1. ELEANOR BOCEK TO MEL SMITH RE-RECORDED VOL. 106 PG. 171 (4/20/1970)
2. SMITH TO MARTIN THYSSEN VOL. 182 RECORDS, PG. 314

MARTIN THYSSEN VOL. 189 RECORDS, PG. 849 DESCRIBED AS WEST OF ROAD

OWNER: MARY L. CRASS & RUSSELL GUERNOT VOL. 172 RECORDS, PG. 590

ALOIS & MARGARET BOCEK TO JEANNE BAUGNET VOL. 228 PG. 66

ALOIS BOCEK TO JEANNE BAUGNET VOL. 228 PG. 65, JULY 2000

TO: GARY & TANIS BOCEK VOL. 124 PG. 663

TO: GARY L. & SUSAN L. BERO VOL. 228 PG. 594

31 OCT. 1966
ELEANOR TO STEVE JR. VOL. 99 PG. 229

STEVE BOCEK JR.
1. NOV. 1967- BOCEK TO CRUM VOL. 100 PG. 357
2. NOV. 1971- CRUM TO NOLAN VOL. 110 PG. 24

STILL IN STEVE BOCEK JR.

13 JULY 1986
BOCEK TO KASSON MAY TO NOLAN

RONDA NOLAN VOL. 487 PG. 203

RONDA NOLAN VOL. 487 PG. 203

STATE OF WISCONSIN, WISCONSIN CONSERVATION COMMISSION VOL. 91 DEEDS, PG. 306, DATED: JUNE 20, 1961

ENCROACHMENT SEE DETAIL 3

SEE DETAIL 4

BOCEK FAMILY VOL. 158, PG. 784-785 VOL. 228, PG. 492

ROAD RECONSTRUCTED 1962-1963 ROAD DEED TO TOWN. VOL. 83, PG. 591 3 RODS WIDE (49.5') DATED: OCTOBER 1953

DAM CONSTRUCTED IN 1937 FLOWAGE RIGHTS GRANTED, APRIL 1952

SW1/4 - NW1/4

SE1/4 - NW1/4

CENTER OF SEC. 16

W1/4 COR. SEC. 16

PUBLIC BOAT LANDING

NE COR. SW1/4 OF NW1/4

390.76' S87°13'46"W

386.76' N87°21'29"E

N87°13'46"E

169.66' 157' (D)

242' (D) 238.14' S87°13'46"W

100' (D)

116' (D)

153' (D)

70' (D)

100' (D)

150' (D)

167'± (M) 180'± (D)

160'± (D)

160'± (D)

180'± (D)

180'± (D)

180'± (D)

180.00' (D&M) 213.58'

119.10'

102.18' N06°26'18"E

27'

53.09'

179.92' N12°04'00"E

103.80' N29°31'00"E

106.10' N05°23'28"W

110.63'

52.88' S29°31'00"W

40.24'

179.92' N12°04'00"E

103.80' N29°31'00"E

106.10' N05°23'28"W

110.63'

52.88' S29°31'00"W

40.24'

179.92' N12°04'00"E

103.80' N29°31'00"E

106.10' N05°23'28"W

110.63'

52.88' S29°31'00"W

40.24'

179.92' N12°04'00"E

103.80' N29°31'00"E

106.10' N05°23'28"W

110.63'

52.88' S29°31'00"W

40.24'

179.92' N12°04'00"E

103.80' N29°31'00"E

106.10' N05°23'28"W

110.63'

52.88' S29°31'00"W

40.24'

179.92' N12°04'00"E

103.80' N29°31'00"E

106.10' N05°23'28"W

110.63'

52.88' S29°31'00"W

40.24'

179.92' N12°04'00"E

103.80' N29°31'00"E

106.10' N05°23'28"W

110.63'

52.88' S29°31'00"W

40.24'

179.92' N12°04'00"E

103.80' N29°31'00"E

106.10' N05°23'28"W

110.63'

52.88' S29°31'00"W

40.24'

179.92' N12°04'00"E

103.80' N29°31'00"E

106.10' N05°23'28"W

110.63'

52.88' S29°31'00"W

40.24'

179.92' N12°04'00"E

103.80' N29°31'00"E

106.10' N05°23'28"W

110.63'

52.88' S29°31'00"W

40.24'

179.92' N12°04'00"E

103.80' N29°31'00"E

106.10' N05°23'28"W

110.63'

52.88' S29°31'00"W

40.24'

179.92' N12°04'00"E

103.80' N29°31'00"E

106.10' N05°23'28"W

110.63'

52.88' S29°31'00"W

40.24'

179.92' N12°04'00"E

103.80' N29°31'00"E

106.10' N05°23'28"W

110.63'

52.88' S29°31'00"W

40.24'

179.92' N12°04'00"E

103.80' N29°31'00"E

106.10' N05°23'28"W

110.63'

52.88' S29°31'00"W

40.24'

179.92' N12°04'00"E

103.80' N29°31'00"E

106.10' N05°23'28"W

110.63'

52.88' S29°31'00"W

40.24'

179.92' N12°04'00"E

103.80' N29°31'00"E

106.10' N05°23'28"W

110.63'

52.88' S29°31'00"W

40.24'

179.92' N12°04'00"E

103.80' N29°31'00"E

106.10' N05°23'28"W

110.63'

52.88' S29°31'00"W

40.24'

179.92' N12°04'00"E

103.80' N29°31'00"E

106.10' N05°23'28"W

110.63'

52.88' S29°31'00"W

40.24'

179.92' N12°04'00"E

103.80' N29°31'00"E

106.10' N05°23'28"W

110.63'

52.88' S29°31'00"W

40.24'

179.92' N12°04'00"E

103.80' N29°31'00"E

106.10' N05°23'28"W

110.63'

52.88' S29°31'00"W

40.24'

179.92' N12°04'00"E

103.80' N29°31'00"E

106.10' N05°23'28"W

110.63'

52.88' S29°31'00"W

40.24'

179.92' N12°04'00"E

103.80' N29°31'00"E

106.10' N05°23'28"W

110.63'

52.88' S29°31'00"W

40.24'

179.92' N12°04'00"E

103.80' N29°31'00"E

106.10' N05°23'28"W

110.63'

52.88' S29°31'00"W

40.24'

179.92' N12°04'00"E

103.80' N29°31'00"E

106.10' N05°23'28"W

110.63'

52.88' S29°31'00"W

40.24'

179.92' N12°04'00"E

103.80' N29°31'00"E

106.10' N05°23'28"W

110.63'

52.88' S29°31'00"W

40.24'

179.92' N12°04'00"E

103.80' N29°31'00"E

106.10' N05°23'28"W

110.63'

52.88' S29°31'00"W

40.24'

179.92' N12°04'00"E

103.80' N29°31'00"E

106.10' N05°23'28"W

110.63'

52.88' S29°31'00"W

40.24'

179.92' N12°04'00"E

103.80' N29°31'00"E

106.10' N05°23'28"W

110.63'

52.88' S29°31'00"W

40.24'

179.92' N12°04'00"E

103.80' N29°31'00"E

106.10' N05°23'28"W

110.63'

52.88' S29°31'00"W

40.24'

179.92' N12°04'00"E

103.80' N29°31'00"E

106.10' N05°23'28"W

110.63'

52.88' S29°31'00"W

40.24'

179.92' N12°04'00"E

103.80' N29°31'00"E

106.10' N05°23'28"W

110.63'

52.88' S29°31'00"W

40.24'

179.92' N12°04'00"E

103.80' N29°31'00"E

106.10' N05°23'28"W

110.63'

52.88' S29°31'00"W

40.24'

179.92' N12°04'00"E

103.80' N29°31'00"E

106.10' N05°23'28"W

110.63'

52.8