

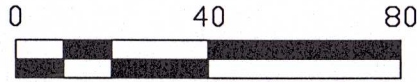
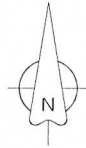
PART OF THE SW1/4 OF THE NW 1/4,
SECTION 29, T36N R12E, TOWN OF
CRANDON, FOREST COUNTY, WISCONSIN

RECEIVED

JAN 13 23

CO. TREASURER

CLIENT: DENNIS L. ABNEY



BEARINGS REFERENCED TO THE
FOREST COUNTY COORDINATE SYSTEM
NAD 83 (2011)

- LEGEND
- 3/4 INCH IRON PIPE, FOUND
 - 3/4 INCH REBAR, SET
 - () PREVIOUSLY RECORDED AS

NW CORNER
PK NAIL
SECTION 29
T36N R12E

FOREST CO. SURVEY
FILE# 261229-20180727

N 00°06'04" W
2633.88'

RR SPIKE
SECTION 29
T36N R12E

FOREST CO SURVEYOR
FILE # 361229-20221218
DATE 12/03/2023 BY JH

DOC
226863

416.20'
N 00°05'22" W 621.09'

(N 89°42' W)
N 89°41'22" W 150.00'

DOC
226865

22,500 SQ. FT.
0.5 ACRES

DOC
171484

19' ELECTRIC LINE EASEMENT
DOC. 192876

DRIVEWAY
ENCROACHES

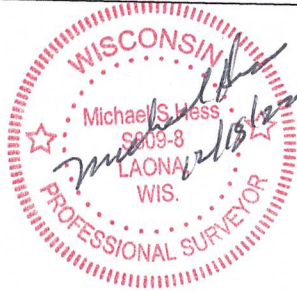
N 89°41'22" W 150.00'

USH 8
(R/W WIDTH VARIES)

379.96'
S 88°55'12" E 5704.41'

5324.45'

E 1/4
1" IRON PIPE
SECTION 29
T36N R12E



DOC
226865

(23.94')
24.12'

N 00°05'22" W 150.00'

125.88'

127.90'

55.10'

12-807