

Document Number  
217630

REGISTER'S OFFICE  
Forest County, Wis.  
Approved for record this 24<sup>th</sup> day  
of July A.D., 2015 at  
4:15 o'clock P.M. and recorded  
in Vol. Corner Restoration  
Page 15  
*Erica Z. Dorton, Deputy*  
Register of Deeds

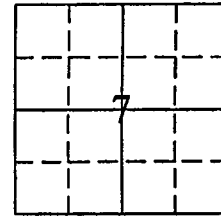
# U.S. PUBLIC LAND SURVEY MONUMENTATION RECORD

(AS REQUIRED BY S. A-E 7.08, WI ADM. CODE)

CORNER: SOUTHEAST INDEX NUMBER: J-5  
SECTION: 7 TOWNSHIP: T36N RANGE: R13E  
TOWN/CITY/VILLAGE: TOWN OF LINCOLN  
COUNTY: FOREST STATE: WISCONSIN

HISTORY OF ORIGINAL CORNER ESTABLISHMENT AND SUBSEQUENT RESTORATIONS  
AND DESCRIPTION OF ANY RECORD, MONUMENT, OCCUPATIONAL, TESTIMONIAL, OR  
OTHER EVIDENCE CONSIDERED:

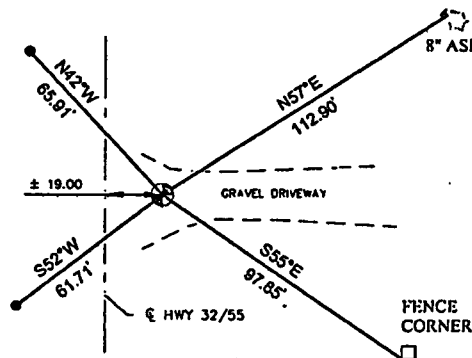
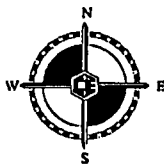
1865: JAMES L. NOWLIN, SET CORNER POST  
20" HEMLOCK N 54°W 10 LINKS  
12" CEDAR N 76°E 38 LINKS



⊕ = CORNER LOCATION

## CORNER WAS: (CHECK ALL THAT APPLY)

- ☐ RESTORED THROUGH ACCEPTANCE OF AN OBLITERATED LOCATION
- ☐ RESTORED OR REESTABLISHED IN A LOCATION THAT DIFFERS FROM A PREVIOUS RESTORATION OR REESTABLISHMENT (INCLUDE A PLAN VIEW DRAWING AND INDICATE WHAT WAS SET AND/OR FOUND)
- ☒ RESTORED THROUGH ACCEPTANCE OF A FOUND PERPETUATED LOCATION
- ☒ CONSIDERED A LOST CORNER AND REESTABLISHED THROUGH LOST CORNER PROPORTIONATE METHODS (INCLUDE A PLAN VIEW DRAWING SHOWING DISTANCES AND DIRECTIONS TO OTHER PUBLIC LAND SURVEY CORNERS USED FOR PROPORTIONING AND DETERMINING THE CORNER LOCATION)



## LEGEND

- ⊕ - SET 1.25" I.P. W/CAP
- ⌵ - SET DOUBLE HEADED NAIL
- - 5/8" REBAR W/ CEC CAP

NOTE: SEE DETAIL ON PAGE 2 FOR PROPORTIONING AND METHODS USED TO DETERMINE CORNER LOCATION.

DESCRIBE THE MONUMENT AND ACCESSORIES USED TO PERPETUATE THE LOCATION OF THIS CORNER.

(INCLUDE A PLAN VIEW DRAWING AND INDICATE WHAT WAS SET AND/OR FOUND)

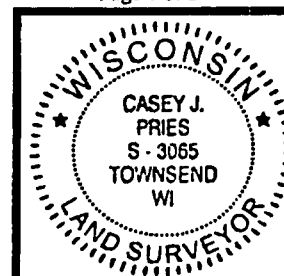
CASEY J. PRIES PLS# S-3065, SET 1.25" x 24" I.P. WITH PLASTIC PRIES PLS-3065 CAP USING DOUBLE PROPORTIONATE METHODS. CORNER IS LOCATED ± 19 FEET EAST OF CENTERLINE OF HWY 32/55.

## SET THE FOLLOWING WITNESSES:

8" ASH	N57°E	112.90'
FENCE CORNER	S55°E	97.85'
5/8" REBAR W/ CEC CAP	S52°W	61.71'
5/8" REBAR W/ CEC CAP	N42°W	65.91'

NOTE: WITNESS TREE HAS CHEST AND STUMP BLAZES WITH DOUBLE HEADED NAIL AT BASE. DISTANCES ARE MEASURED TO DOUBLE HEADED NAIL, OR TO 5/8" REBAR WITH CEC CONTROL CAP.

Page 1 of 2



SIGNATURE: *Casey J. Pries*

DATE: 7-24-15

Index No. J-5

I, CASEY J. PRIES PLS S-3065  
CERTIFY THAT THE CORNER LOCATION SHOWN ON THIS ABOVE RECORD  
WAS DETERMINED BY ME OR UNDER MY DIRECTION AND CONTROL AND  
THAT THIS U.S. PUBLIC LAND SURVEY MONUMENTATION RECORD IS CORRECT  
AND COMPLETE TO THE BEST OF MY KNOWLEDGE AND BELIEF.



COLEMAN ENGINEERING COMPANY  
635 CIRCLE DRIVE, IRON MOUNTAIN, MI 49801  
PHONE: (906) 774-3440 FAX: (906) 774-7776

DRAWN:  
MJT

FB 430, PG:73

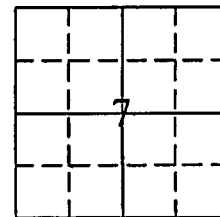
DATE: 7/24/15

JOB NO.  
15127-B

# U.S. PUBLIC LAND SURVEY MONUMENTATION RECORD

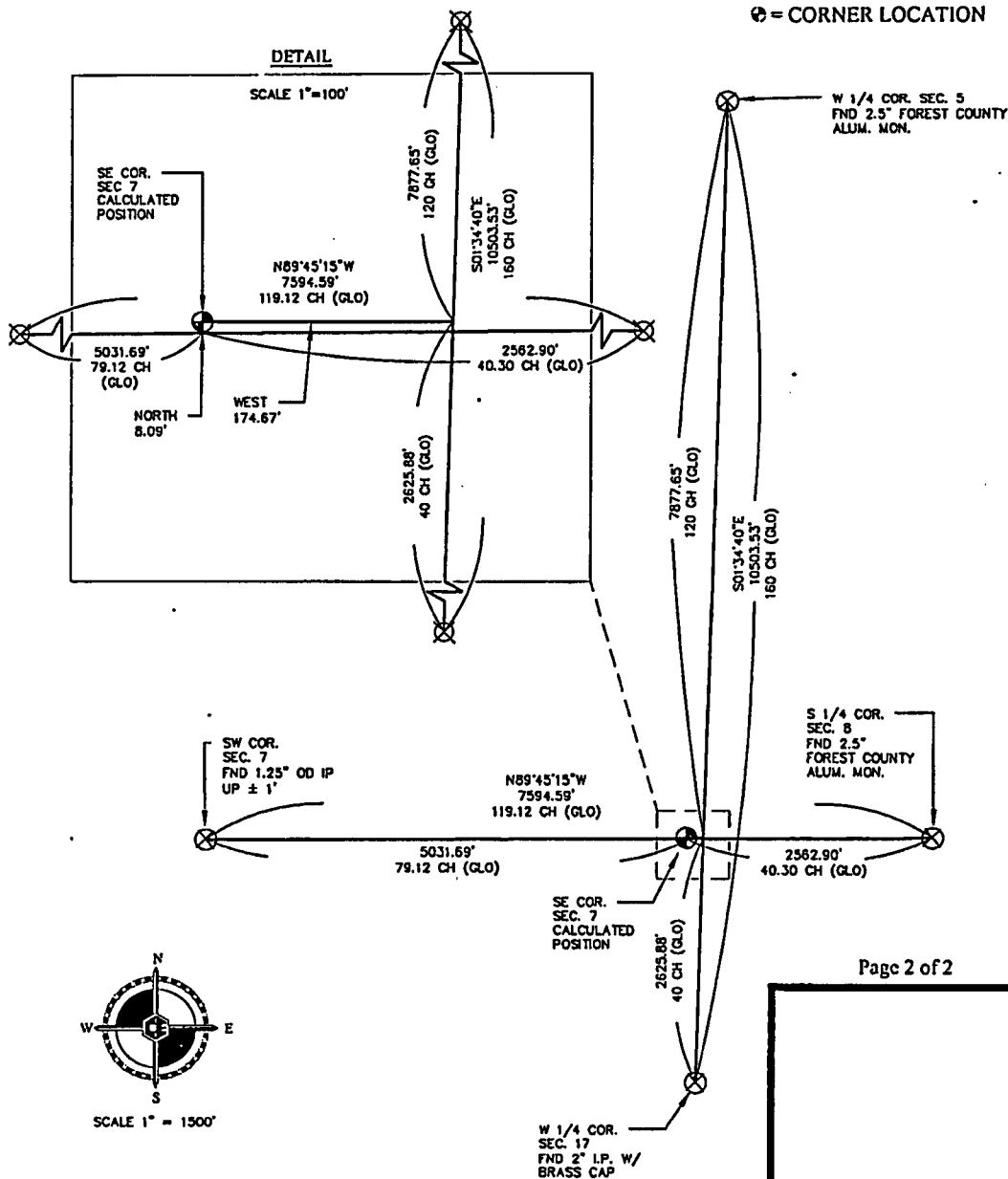
(AS REQUIRED BY S. A-E 7.08, WI ADM. CODE)

CORNER: SOUTHEAST INDEX NUMBER: J-5  
 SECTION: 7 TOWNSHIP: T36N RANGE: R13E  
 TOWN/CITY/VILLAGE: TOWN OF LINCOLN  
 COUNTY: FOREST STATE: WISCONSIN



⊗ = CORNER LOCATION

## PROPORTIONING: PLAN VIEW



Page 2 of 2

SIGNATURE:

DATE:

Index No. J-5I, CASEY J. PRIES PLS S-3065

CERTIFY THAT THE CORNER LOCATION SHOWN ON THIS ABOVE RECORD  
 WAS DETERMINED BY ME OR UNDER MY DIRECTION AND CONTROL AND  
 THAT THIS U.S. PUBLIC LAND SURVEY MONUMENT RECORD IS CORRECT  
 AND COMPLETE TO THE BEST OF MY KNOWLEDGE AND BELIEF.



**COLEMAN ENGINEERING COMPANY**  
 635 CIRCLE DRIVE, IRON MOUNTAIN, MI 49801  
 PHONE: (906) 774-3440 FAX: (906) 774-7776

DRAWN:  
MJT

FB 430, PG:73

DATE: 7/24/15

JOB NO.  
15127-B