

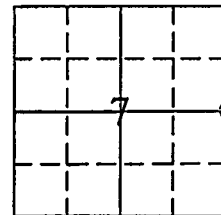
Document Number

217628

REGISTER'S OFFICE
Forest County, Wis.Received for record this 24th day
of July A.D., 2015 at
4:15 o'clock P.M. and recorded
in Vol. Corner Restoration
page 6-5*Erika L. Duda, Deputy*
Register of Deeds

U.S. PUBLIC LAND SURVEY MONUMENTATION RECORD

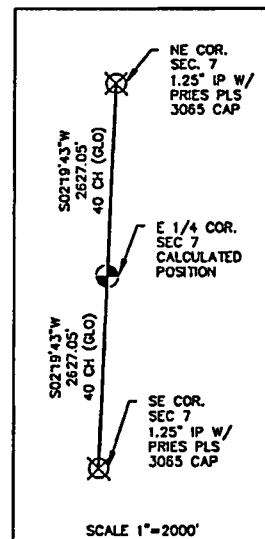
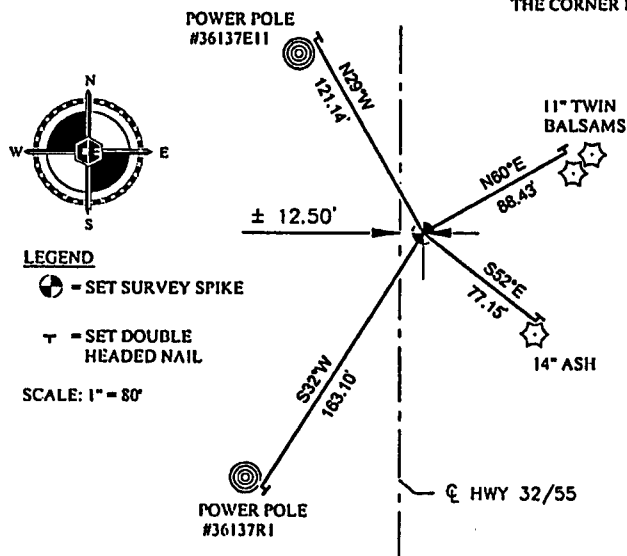
(AS REQUIRED BY S. A-E 7.08, WI ADM. CODE)

CORNER: EAST 1/4 INDEX NUMBER: G-5
SECTION: 7 TOWNSHIP: T36N RANGE: R13E
TOWN/CITY/VILLAGE: TOWN OF LINCOLN
COUNTY: FOREST STATE: WISCONSINHISTORY OF ORIGINAL CORNER ESTABLISHMENT AND SUBSEQUENT RESTORATIONS
AND DESCRIPTION OF ANY RECORD, MONUMENT, OCCUPATIONAL, TESTIMONIAL, OR
OTHER EVIDENCE CONSIDERED:1865: JAMES L. NOWLIN, SET 1/4 SECTION POST
8" CEDAR N30°W 10 LINKS
6" SPRUCE S5°E 30 LINKS

☉ = CORNER LOCATION

CORNER WAS: (CHECK ALL THAT APPLY)

- ☐ RESTORED THROUGH ACCEPTANCE OF AN OBLITERATED LOCATION
- ☐ RESTORED OR REESTABLISHED IN A LOCATION THAT DIFFERS FROM A PREVIOUS RESTORATION OR REESTABLISHMENT (INCLUDE A PLAN VIEW DRAWING AND INDICATE WHAT WAS SET AND/OR FOUND)
- ☒ RESTORED THROUGH ACCEPTANCE OF A FOUND PERPETUATED LOCATION
- ☒ CONSIDERED A LOST CORNER AND REESTABLISHED THROUGH LOST CORNER PROPORTIONATE METHODS (INCLUDE A PLAN VIEW DRAWING SHOWING DISTANCES AND DIRECTIONS TO OTHER PUBLIC LAND SURVEY CORNERS USED FOR PROPORTIONING AND DETERMINING THE CORNER LOCATION)

DESCRIBE THE MONUMENT AND ACCESSORIES USED TO
PERPETUATE THE LOCATION OF THIS CORNER.
(INCLUDE A PLAN VIEW DRAWING AND INDICATE WHAT WAS SET AND/OR FOUND)CASEY J. PRIES PLS# S-3065, SET SURVEY SPIKE USING SINGLE PROPORTIONATE
METHODS. CORNER IS LOCATED ± 12.5 FEET EAST OF CENTERLINE OF HWY 32/55.

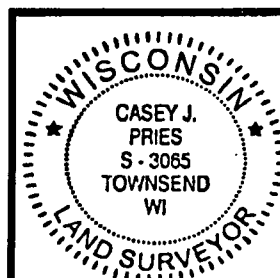
SET THE FOLLOWING WITNESSES:

| | | |
|----------------------|-------|---------|
| 11" TWIN BALSAMS | N60°E | 88.43' |
| 14" ASH | S52°E | 77.15' |
| POWER POLE #36137R1 | S32°W | 163.10' |
| POWER POLE #36137E11 | N29°W | 121.14' |

NOTE: ALL WITNESS TREES HAVE CHEST AND STUMP BLAZES WITH DOUBLE
HEADED NAIL AT BASE. DISTANCES ARE MEASURED TO DOUBLE HEADED NAIL.SIGNATURE: *Casey J. Pries*DATE: 7-24-15Index No. G-5I, CASEY J. PRIES PLS S-3065
CERTIFY THAT THE CORNER LOCATION SHOWN ON THIS ABOVE RECORD
WAS DETERMINED BY ME OR UNDER MY DIRECTION AND CONTROL AND
THAT THIS U.S. PUBLIC LAND SURVEY MONUMENTATION RECORD IS CORRECT
AND COMPLETE TO THE BEST OF MY KNOWLEDGE AND BELIEF.COLEMAN ENGINEERING COMPANY
635 CIRCLE DRIVE, IRON MOUNTAIN, MI 49801
PHONE: (906) 774-3440 FAX: (906) 774-7776DRAWN:
MJT

FB 430, PG:73

DATE: 7/24/15

JOB NO.
15127-BFOREST CO SURVEYOR
FILE # 361307-20150724
DATE _____ BY _____