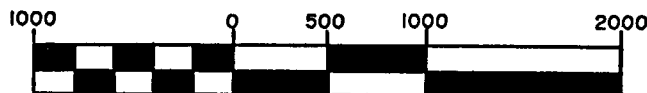
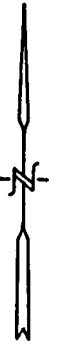


PLAT OF SURVEY U.S. GOVERNMENT LANDS

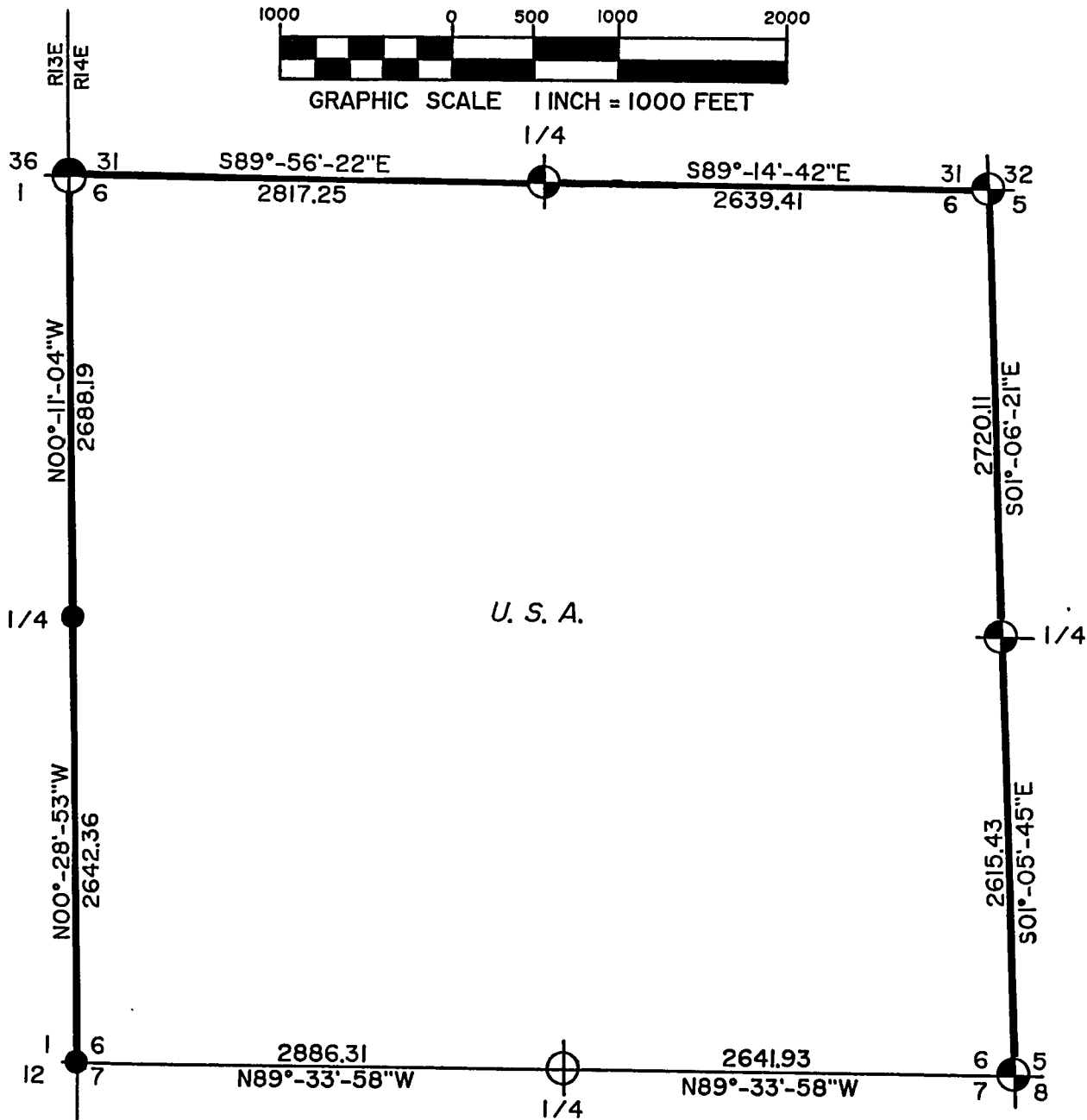
SHEET 1 OF 4

BEING ALL OF SECTION 6,
TOWNSHIP 36 NORTH, RANGE 14 EAST,
FOURTH PRINCIPAL MERIDIAN

FOREST COUNTY, WISCONSIN



GRAPHIC SCALE 1 INCH = 1000 FEET



LEGEND

- = 2-1/2" X 36" ALUMINUM CAPPED PIPE - SET THIS SURVEY
- = FOUND ALUMINUM CAPPED PIPE
- = FOUND IRON PIPE WITH BRASS CAP
- = BOUNDARY LINE MARKED TO FOREST SERVICE STANDARDS
- = FOUND 1-1/2" DIAMETER IRON PIPE

FOREST CO SURVEYOR

FILE # 361406-1993

DATE _____ PY _____

Stock No. 26273

SHEET 2 OF 4

SECTION 6 - T36N-R14E
SURVEY NOTES

This survey was made by Coleman Engineering Company for the U.S. Department of Agriculture - Forest Service under Contract No. 53-56A6-2-788 for the purpose of restoring and establishing corners on the perimeter of Section 6, and for locating and marking the boundaries of U.S. Government lands along the perimeter of Section 6, Township 36 North, Range 14 East, Fourth Principal Meridian, Forest County, State of Wisconsin.

The U.S. Government acquired ownership of Section 6 in 1935.

The original township line and subdivision surveys of T36N-R14E were completed in May, 1858, and July, 1859, respectively.

The corner positions recovered, restored and established by this survey are marked by the monument described in the map legend.

The corner positions established were located to a minimum accuracy of 1 part in 5000.

The bearings between corner positions are true bearings and determined by solar (hour-angle) observations.

The field notes of the survey and a copy of the plat are on file in the Forest Supervisor's office in Rhinelander, Wisconsin.

CORNERS RECOVERED OR RESTORED1. Standard Corner Common to Townships 36 and 37 North, and Ranges 13 and 14 East

Corner position monumented by C. E. Walker, County Surveyor, in 1938, and recovered by Philip T. Hansen, RLS 498, in 1975. Certificate on file in Forest County - Document No. 107880.

Established corner references:

Balsam	12"	N 32° E	32.87 Feet
Spruce	20"	N 87° E	36.62 Feet
Spruce	14"	S 17° E	33.21 Feet
Red Pine	3"	N 59° W	68.14 Feet
Witness Corner (Berntsen Monument)	---	Due East	13.20 Feet
Steel Sign Post		Southeast	3.05 Feet

2. Standard Quarter Corner Common to Section 31, T37N-R14E and Section 6, T36N-R14E

Corner position monumented by Philip T. Hansen, RLS 498, in 1975. Certificate on file in Forest County - Document No. 108502.

Established corner references:

Maple	14"	S 72° E	31.27 Feet
Cedar	9"	S 10° E	17.63 Feet
Black Ash	8"	S 49° W	58.24 Feet
Black Ash	7"	N 28° W	14.34 Feet
Steel Sign Post		Southeast	2.32 Feet

Stock No. 26273

SHEET 3 OF 4

3. Standard Corner Common to Sections 31 and 32, T37N-R14E and Sections 5 and 6, T36N-R14E

Corner position monumented by Philip T. Hansen, RLS 498, in 1975. Certificate on file in Forest County - Document No. 108438.

Established additional corner references:

Sugar	12"	N 48° E	51.67 Feet
Sugar	9"	S 49° E	24.74 Feet
Sugar	11"	S 72° W	69.00 Feet
Sugar	8"	N 14° W	41.34 Feet
Steel Sign Post		Southwest	3.05 Feet

4. Quarter Corner Common to Sections 5 and 6

Corner position monumented by Glen Barker, RLS 1682, in 1988. Certificate on file in Forest County - Document No. 137126.

5. Section Corner Common to Sections 5, 6, 7 and 8

Corner position monumented by Philip T. Hansen, RLS 498, in 1975. Certificate on file in Forest County - Document No. 108493.

Established corner references:

Sugar	6"	N 39° E	6.84 Feet
Sugar	14"	S 48° E	46.68 Feet
Spruce	7"	S 30° W	9.92 Feet
Sugar	8"	N 23° W	39.62 Feet
Steel Sign Post		West	2.08 Feet

6. Quarter Corner Common to Sections 6 and 7

Restored corner position by single proportionate methods between southeast and southwest corners of Section 6.

Established corner references:

Yellow Birch	6"	N 09° E	19.12 Feet
Sugar	10"	S 56° E	47.47 Feet
Sugar	9"	S 02° E	53.71 Feet
Yellow Birch	10"	S 53° W	17.94 Feet
Steel Sign Post		East	1.62 Feet

7. Standard Corner Common to Sections 6 and 7, T36N-R14E and Sections 1 and 12, T36N-R13E

Corner position monumented by C.E. Walker in 1938, and recovered by Thomas R. Arnott, RLS 887, in 1975. Certificate on field in Forest County - Document No. 108075.

Established corner references:

Sugar	12"	N 74° E	18.92 Feet
Basswood	8"	S 39° E	21.82 Feet
Sugar	13"	S 33° W	3.83 Feet
Sugar	10"	N 50° W	15.15 Feet
Steel Sign Post		East	2.73 Feet

8. Standard Quarter Corner Common to Section 6, T36N-R14E and Section 1, T36N-R13E

Corner position monumented by C.E. Walker in 1938. Recovered by John R. Garske, RLS 1685, in 1992.

Established corner references:

Balsam	8"	N 04° E	37.67 Feet
B. Cherry	7"	S 85° E	32.94 Feet
Balsam	8"	S 30° E	37.23 Feet
Spruce	6"	S 39° W	77.94 Feet
Steel Sign Post		East	2.24 Feet

SURVEYOR'S AFFIDAVIT

State of Wisconsin)
 County of Forest) S.S.

I, John R. Garske, a registered surveyor in the State of Wisconsin, hereby certify that this survey of Section 6, Township 36 North, Range 14 East, Fourth Principal Meridian, State of Wisconsin, was performed under my direct responsible supervision.

The plat map and the notes herewith are a correct representation of the land surveyed and divided. I have surveyed and subdivided said section in accordance with the rules for survey of the public lands and with the statutes of the State of Wisconsin.



John R. Garske

John R. Garske
 Coleman Engineering Company
 R.L.S., State of Wisconsin
 License No. S-1685

Plat ready for filing:

Sue Vap
 District Ranger

Date of Survey: 1993

