

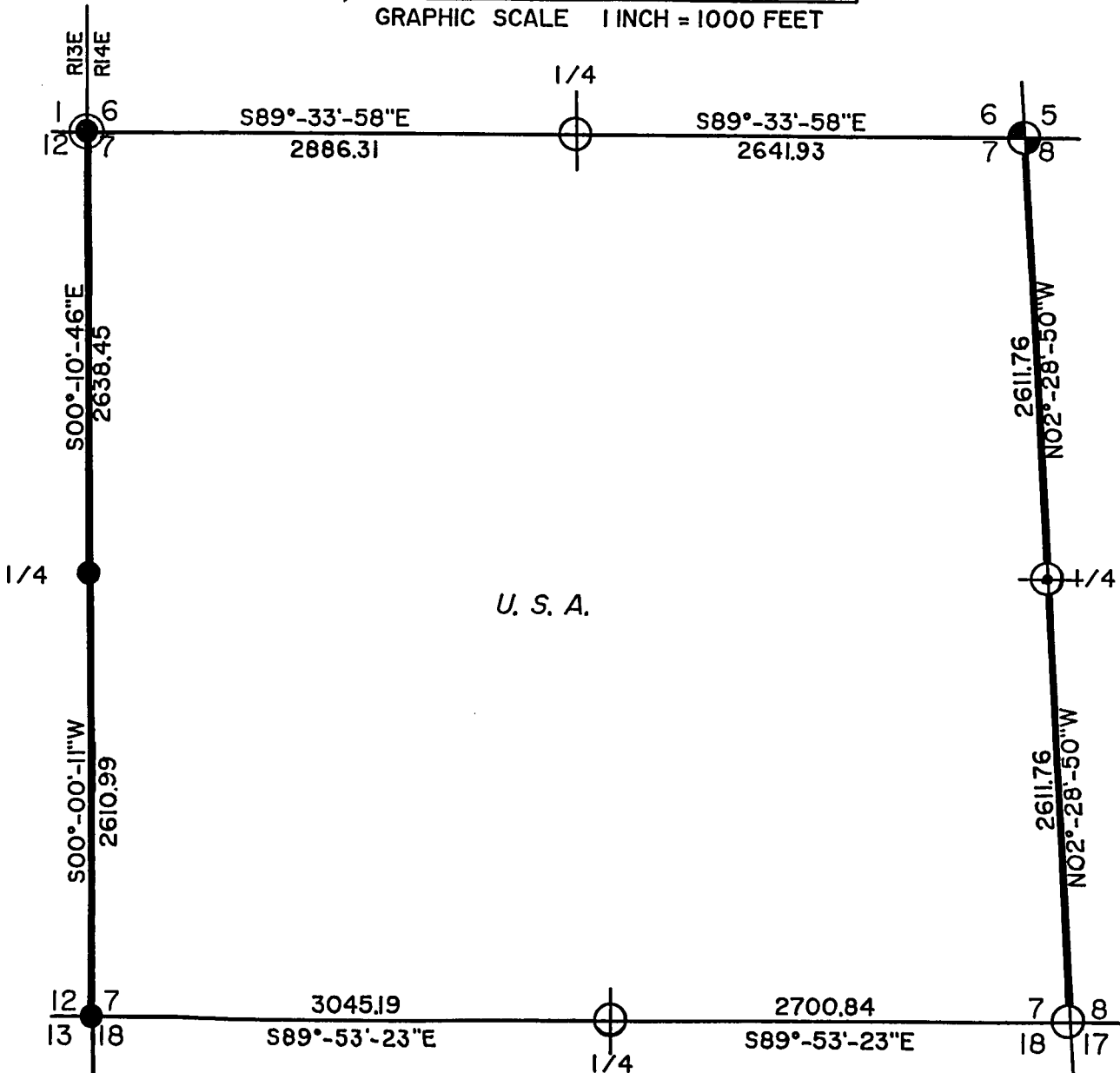
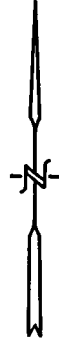
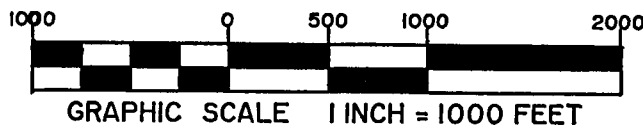
FOREST CO SURVEYOR  
 FILE # 3614107-19930602  
 DATE \_\_\_\_\_ BY \_\_\_\_\_

SHEET 1 OF 4

# PLAT OF SURVEY U.S. GOVERNMENT LANDS

BEING ALL OF SECTION 7,  
 TOWNSHIP 36 NORTH, RANGE 14 EAST,  
 FOURTH PRINCIPAL MERIDIAN,

## FOREST COUNTY, WISCONSIN



U. S. A.

### LEGEND

- = 2-1/2" X 36" ALUMINUM CAPPED PIPE - SET THIS SURVEY
- = FOUND ALUMINUM CAPPED PIPE
- = FOUND IRON PIPE WITH BRASS CAP
- = BOUNDARY LINE MARKED TO FOREST SERVICE STANDARDS
- = 2-1/2" X 60" ALUMINUM CAPPED PIPE - SET THIS SURVEY
- = FOUND 1" IRON PIPE

Stock No. 26273

SHEET 2 OF 4

**SECTION 7 - T36N-R14E**  
**SURVEY NOTES**

This survey was made by Coleman Engineering Company for the U.S. Department of Agriculture - Forest Service under Contract No. 53-56A6-2-788 for the purpose of restoring and establishing corners on the perimeter of Section 7, and for locating and marking the boundaries of U.S. Government lands along the perimeter of Section 7, Township 36 North, Range 14 East, Fourth Principal Meridian, Forest County, State of Wisconsin.

The U.S. Government acquired ownership of Section 7 in 1935 and 1969.

The original township line and subdivision surveys of T36N-R14E were completed in May, 1858, and July, 1859, respectively.

The corner positions recovered, restored and established by this survey are marked by the monument described in the map legend.

The corner positions established were located to a minimum accuracy of 1 part in 5000.

The bearings between corner positions are true bearings and determined by solar (hour-angle) observations.

The field notes of the survey and a copy of the plat are on file in the Forest Supervisor's office in Rhinelander, Wisconsin.

**CORNERS RECOVERED OR RESTORED**

1. Standard Corner Common to Sections 6 and 7, T36N-R14E and Sections 1 and 12, T36N-R13E

Corner position monumented by C. E. Walker in 1938, and recovered by Thomas R. Arnott, RLS 887, in 1975. Certificate on file in Forest County - Document No. 108075.

Established corner references:

Sugar	12"	N 74° E	18.92 Feet
Basswood	8"	S 39° E	21.82 Feet
Sugar	13"	S 33° W	3.83 Feet
Sugar	10"	N 50° W	15.15 Feet
Steel Sign Post		East	2.73 Feet

2. Quarter Corner Common to Sections 6 and 7

Restored corner position by single proportionate methods between northeast and northwest corners of Section 7.

Established corner references:

Yellow Birch	6"	N 09° E	19.12 Feet
Sugar	10"	S 56° E	47.47 Feet
Sugar	9"	S 02° E	53.71 Feet
Yellow Birch	10"	S 53° W	17.94 Feet
Steel Sign Post		East	1.62 Feet

Stock No. 26273

SHEET 3 OF 4

3. Section Corner Common to Sections 5, 6, 7 and 8

Corner position monumented by Philip T. Hansen, RLS 498, in 1975. Certificate on file in Forest County - Document No. 108493.

Established additional corner references:

Sugar	6"	N 39° E	6.84 Feet
Sugar	14"	S 48° E	46.68 Feet
Spruce	7"	S 30° W	9.92 Feet
Sugar	8"	N 23° W	39.62 Feet
Steel Sign Post		West	2.08 Feet

4. Quarter Corner Common to Sections 7 and 8

Restored corner position by single proportionate methods, between northeast and southeast corners of Section 7.

Established corner references:

Cedar	13"	N 50° E	15.65 Feet
Cedar	9"	S 15° E	14.51 Feet
Cedar	13"	S 80° W	23.92 Feet
Cedar	11"	N 03° W	34.01 Feet
Steel Sign Post		West	2.04 Feet

5. Section Corner Common to Sections 7, 8, 17 and 18

Corner position restored by double proportionate methods between the northeast corner of Section 7 and the southeast corner of Section 18, and the southwest corner of Section 7 and the south quarter corner of Section 8.

Established corner references:

B. Cherry	9"	N 58° E	26.12 Feet
Sugar	10"	S 78° E	18.87 Feet
B. Cherry	9"	S 43° W	45.04 Feet
B. Cherry	9"	N 17° W	45.46 Feet
Steel Sign Post		West	2.02 Feet

6. Quarter Corner Common to Sections 7 and 18

Corner position restored by single proportionate methods between the southwest corner of Section 7 and the southeast corner of Section 7.

Established corner references:

Sugar	7"	N 12° W	28.76 Feet
Sugar	8"	S 73° E	17.06 Feet
Sugar	10"	S 05° W	67.29 Feet
Sugar	6"	S 63° W	64.70 Feet
Steel Sign Post		West	1.80 Feet

7. Standard Corner Common to Sections 7 and 18, T36N-R14E and Sections 12 and 13, T36N-R13E

Corner position monumented by C.E. Walker in 1938. Recovered by Thomas R. Amott, RLS 887, in 1975. Certificate on file in Forest County - Document No. 108078.

Established additional corner references:

Cedar	9"	N 18° E	34.03 Feet
Spruce	10"	N 76° E	29.43 Feet
Cedar	12"	S 22° W	31.76 Feet
Cedar	11"	N 85° W	49.17 Feet
Steel Sign Post		East	2± Feet

8. Standard Quarter Corner Common to Section 7, T36N-R14E and Section 12, T36N-R13E

Corner position monumented by C.E. Walker in 1938. Recovered by Thomas R. Amott, RLS 887, in 1975. Certificate on file in Forest County - Document No. 108076.

Established additional corner references:

Maple	8"	N 37° E	15.20 Feet
Maple	9"	S 42° E	5.77 Feet
Maple	8"	S 42° W	5.13 Feet
Maple	8"	N 52° W	118.42 Feet
Steel Sign Post		East	2.23 Feet

SURVEYOR'S AFFIDAVIT

State of Wisconsin )  
 County of Forest ) S.S.

I, John R. Garske, a registered surveyor in the State of Wisconsin, hereby certify that this survey of Section 7, Township 36 North, Range 14 East, Fourth Principal Meridian, State of Wisconsin, was performed under my direct responsible supervision.

The plat map and the notes herewith are a correct representation of the land surveyed and divided. I have surveyed and subdivided said section in accordance with the rules for survey of the public lands and with the statutes of the State of Wisconsin.



*John R. Garske*  
 John R. Garske  
 Coleman Engineering Company  
 R.L.S., State of Wisconsin  
 License No. S-1685

Plat ready for filing:

*Sue Vogt*  
 District Ranger

Date of Survey: 1993

