

Stock No. 26273

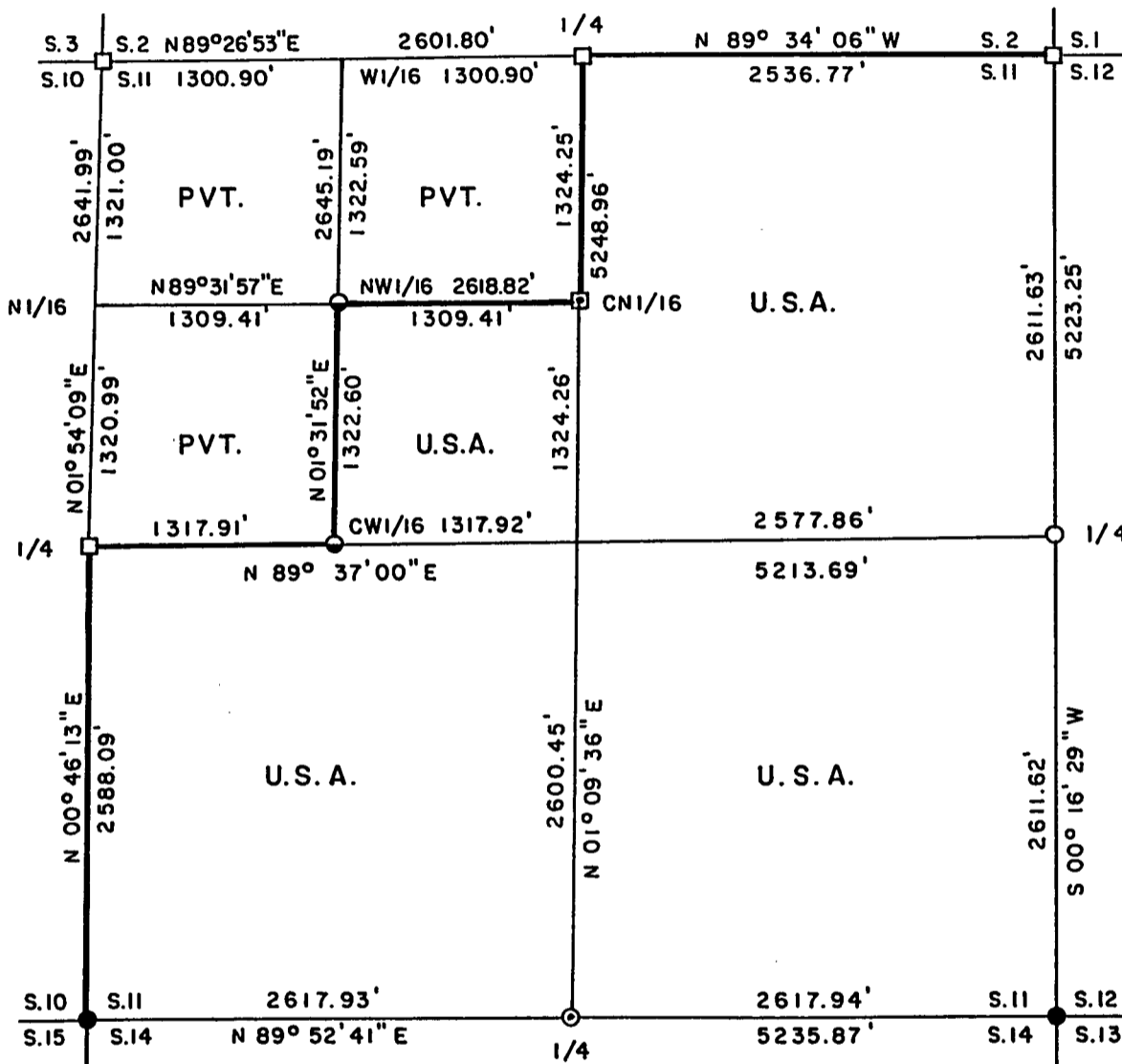
FOREST CO SURVEYOR

FILE # 361411-19970320

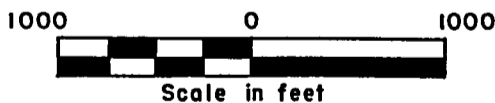
DATE _____ BY _____

PLAT OF SURVEY FOR CERTIFIED LAND CORNER RESTORATION AND ESTABLISHMENT
 BEING THE CORNERS FOR THE NE1/4, SE1/4, SW1/4, AND SE1/4-NW1/4
 OF SECTION II, T.36N. R.14E., FOURTH PRINCIPAL MERIDIAN
 COUNTY OF FOREST, STATE OF WISCONSIN

Sheet 1 of 6



SCALE 1" = 1000'



LEGEND

- 2 inch I.D. iron pipe monument with brass cap set by U.S.F.S.
- 2½ inch diameter aluminum pipe monument with an aluminum cap, Forest Co. monument
- ⊙ Chiseled an "X" on a rock to mark the corner and placed a 2½" diameter Witness Corner aluminum pipe monument, 36 inches long with an aluminum cap
- 2½" diameter aluminum pipe monument, 36 inches long with an aluminum cap
- ⊠ Chiseled an "X" on a rock to mark the corner and placed a 1" diameter Witness Corner aluminum pipe monument, 36 inches long with an aluminum cap
- 1 inch diameter aluminum pipe monument, 36 inches long with an aluminum cap

— Boundary line marked to Forest Service standards

Stock No. 26273

Sheet 2 of 6

SURVEY NOTES

This survey was made by Gary L. Pisoni, a Registered Land Surveyor in the State of Wisconsin, for the U.S.D.A., Forest Service, for the purpose of recovering, restoring, establishing, marking, and perpetuating the corners and boundary lines of U.S. Government Land on the perimeter and within Section 11, Township 36 North, Range 14 East, Fourth Principal Meridian, Forest County, State of Wisconsin, as shown on the plat map herewith.

The Original Government Township Lines was done by Artemas Curtis, U.S. Deputy Surveyor in September of 1857. The original Government Sub-division of this township was done by James McBride, U.S. Deputy Surveyor in July of 1859.

The bearings between corner positions are true bearings referenced to the East One-Half of the North section line of Section 23, as determined by a solar observation by James J. Fronsoe, R.L.S. of Amberg, WI. from a Plat of Survey of August, 1986 of Section 23. All distances shown thereon are in feet and hundredths of feet. The control traverse was measured by use of an electronic distance measuring equipment.

The accuracy of this survey exceeds the State requirements of 1 in 3000.

The field notes and a copy of the Plat of Survey are on file in the Forest Supervisor's Office at Rhinelander, Wisconsin.

CORNERS RECOVERED AND RESTORED1. Northwest Section Corner

In 1985, Glen Barker, RLS. for Consolidated Paper Co. restored the corner position from a found 1" iron pipe and accepted it as the best available evidence for restoring the corner position. Barker set a 2 1/2" diameter aluminum capped Forest County pipe monument.

1985 Corner References:

| | | | |
|--------------|-----|--------|------------|
| Black Spruce | 7" | N 32°W | 19.87 feet |
| Black Spruce | 10" | N 19°E | 19.54 feet |
| Black Spruce | 5" | N 89°E | 12.13 feet |
| White Birch | 7" | S 24°W | 12.22 feet |

2. North Quarter Corner

In 1985, Glen Barker, RLS. for Consolidated Paper Co. restored the corner position from two old squared cedar stakes, three old cedar points, 14" bearing tree dated back to 1938, with an old blazed line running East. Barker accepted cedar post as the best available evidence for restoring the corner position and set a 2 1/2" dia. aluminum capped Forest County pipe monument.

In 1993, Gary L. Pisoni, recovered the corner position and restored bearing trees and added a steel sign post.

1985 Corner References:

| | | | |
|---------|-----|--------|------------|
| Hemlock | 8" | N 22°E | 13.60 feet |
| Hemlock | 15" | S 72°E | 35.28 feet |
| Hemlock | 8" | S 06°E | 37.72 feet |
| Cedar | 7" | N 30°W | 21.30 feet |

1993 Corner References:

| | | | |
|-----------------|-----|--------|------------|
| Hemlock | 11" | N 22°E | 13.91 feet |
| Hemlock | 16" | S 71°E | 35.19 feet |
| Hemlock | 11" | S 05°E | 37.31 feet |
| Cedar | 9" | N 32°W | 25.58 feet |
| Steel Sign Post | | N 85°W | 1.00 feet |

3. Northeast Section Corner

In 1982, Daniel K. Pleoger, RLS. restored the corner position from evidence of and old post point, old blazed trees, and old location poster. Placed 2 1/2" pipe monument with stamped cap at corner.

In 1993, Gary L. Pisoni, RLS. recovered the corner position and restored bearing trees.

Corner References:

| | | | |
|-------------|----|--------|------------|
| Sugar Maple | 5" | N 67°E | 8.30 feet |
| Sugar Maple | 8" | S 24°W | 12.23 feet |
| Sugar Maple | 7" | N 61°W | 23.98 feet |

1993 Corner References:

| | | | |
|-----------------|-----|--------|------------|
| Sugar Maple | 5" | N 68°E | 8.49 feet |
| Sugar Maple | 12" | S 25°W | 12.90 feet |
| Sugar Maple | 11" | N 60°W | 23.44 feet |
| Basswood(new) | 11" | S 68°W | 25.71 feet |
| Steel Sign Post | | N 14°W | 1.24 feet |

4. East Quarter Corner

Corner position restored by single proportionate measurement methods on line between the Northeast Section corner of Section 11 and the Southeast Section corner of Section 11.

Corner References:

| | | | |
|-----------------|-----|--------|------------|
| Sugar Maple | 7" | S 77°E | 23.62 feet |
| Sugar Maple | 6" | S 04°W | 23.32 feet |
| Sugar Maple | 5" | N 72°W | 8.42 feet |
| Sugar Maple | 10" | N 22°W | 32.06 feet |
| Steel Sign Post | | North | 0.93 feet |

5. Southeast Section Corner

In 1964, Jean F. Resvick, RLS. restored corner position from original bearing tree evidence set by James McBride in 1859, and also found a old sand point marking corner position which he accepted. Resvick replaced sand point with 2" iron pipe with stamped brass cap.

In 1986, James J. Fronsoe, RLS. recovered corner position from evidence set by Jean F. Resvick in 1964.

1986 Corner References:

| | | | |
|-----------------|-----|--------|------------|
| Cedar | 7" | N 22°E | 5.90 feet |
| Hemlock | 14" | S 64°E | 20.90 feet |
| Hemlock | 18" | S 35°E | 7.70 feet |
| Cedar | 7" | S 47°W | 30.05 feet |
| Cedar | 6" | N 45°W | 62.40 feet |
| Steel Sign Post | 6' | South | 0.70 feet |

6. South Quarter Corner

Corner position restored by single proportionate measurement methods on line between the Southeast corner of 11 and the Southwest corner of Section 11. Corner falls on a large rock. Chiseled an "X" on side of rock and set a Witness Corner, being a 2 1/2" aluminum pipe monument, 36" long and 6" above ground surface.

Corner References:

| | | | |
|-----------------|--------------|------------|------------|
| Sugar Maple | 12" | N 35°E | 13.66 feet |
| Sugar Maple | 12" | S 48°E | 18.70 feet |
| Sugar Maple | 5" | S 24°W | 41.97 feet |
| Basswood | 13" | S 65°W | 16.57 feet |
| Witness Corner | 2 1/2" X 36" | N89°52.8'E | 1.70 feet |
| Steel Sign Post | | East | 3.63 feet |

7. Southwest Section Corner

In 1977, Jean F. Resvick, RLS. restored the corner position from original corner evidence and original bearing tree stumps set by James McBride in 1859. Resvick placed 2" galvanized iron pipe with brass cap at corner.

Corner References:

| | | | |
|-----------------|-----|--------|------------|
| Hemlock | 8" | N 61°E | 35.00 feet |
| Hemlock | 14" | S 20°E | 22.06 feet |
| White Pine | 6" | S 60°W | 33.38 feet |
| Steel Sign Post | | East | 0.50 feet |

Stock No. 26273

Sheet 5 of 6

8. West Quarter Corner

In 1985, Glen Barker, RLS. for Consolidated Paper Co. restored the corner position from a found 2" squared wood post and accepted it as the best available evidence for restoring the corner position. Barker set a 2 1/2" diameter aluminum capped Forest County pipe monument.

In 1993, Gary L. Pisoni, recovered the corner position and restored bearing trees and added a steel sign post.

1985 Corner References:

| | | | |
|--------------|----|--------|------------|
| White Birch | 9" | N 31°W | 27.67 feet |
| White Birch | 8" | N 65°E | 22.06 feet |
| Cedar | 4" | S 18°E | 10.91 feet |
| Black Spruce | 8" | S 71°W | 37.90 feet |

1993 Corner References:

| | | | |
|--------------------|-----|--------|------------|
| Cedar (OBT) | 5" | S 17°E | 10.93 feet |
| Black Spruce (OBT) | 8" | S 70°W | 37.53 feet |
| Cedar (New) | 8" | N 31°E | 34.78 feet |
| Black Spruce (New) | 10" | S 64°E | 31.05 feet |
| Steel Sign Post | 6' | N 41°W | 1.35 feet |

CORNERS ESTABLISHED1. Center West Sixteenth Corner

Corner position established on line and midway between the West Quarter corner and Center Quarter corner.

Corner References:

| | | | |
|-----------------|-----|--------|------------|
| Sugar Maple | 10" | N 19°E | 14.64 feet |
| Basswood (Dbl) | 8" | S 71°E | 38.45 feet |
| Steel Sign Post | | S 65°E | 0.95 feet |

2. Northwest Sixteenth Corner

Corner position established at the intersection of straight lines between opposing sixteenth corner positions on the perimeter of the Northwest Quadrant.

Corner References:

| | | | |
|-----------------|----|--------|------------|
| Red Maple | 6" | N 44°E | 31.16 feet |
| Red Maple | 7" | S 12°W | 18.66 feet |
| Steel Sign Post | | S 61°W | 0.88 feet |

3. Center North Sixteenth Corner

Corner position established on line and midway between the North Quarter corner and Center Quarter corner. CN 1/16 corner falls on a large rock. Chiseled an "X" on top of large rock for corner position. Set Witness Corner.

Corner References:

| | | | |
|-------------------------|-----|--------------|------------|
| Sugar Maple | 8" | N 24°E | 21.41 feet |
| Sugar Maple | 15" | S 48°E | 17.98 feet |
| Witness Corner 1" X 36" | | N 01°09'36"E | 1.50 feet |
| Steel Sign Post | | East | 0.95 feet |

Stock No. 26273

Sheet 6 of 6

SURVEYOR'S CERTIFICATE

State of Wisconsin) ss
 County of Forest)

I, Gary L. Pisoni, a Cadastral Surveyor, and a Registered Land Surveyor in the State of Wisconsin, hereby certify that I have surveyed and sub-divided Section 11, Township 36 North, Range 14 East, Fourth Principal Meridian, State of Wisconsin.

The plat map and survey notes herewith are a correct representation of the land surveyed and divided. I have surveyed and sub-divided said section in accordance with the rules for the survey of public lands and with the statutes of the State of Wisconsin.

Date of Survey: 1993-94

Gary L. Pisoni

 Cadastral Surveyor
 R.L.S. State of Wisconsin
 Certificate S-1634

