

Stock No. 26273

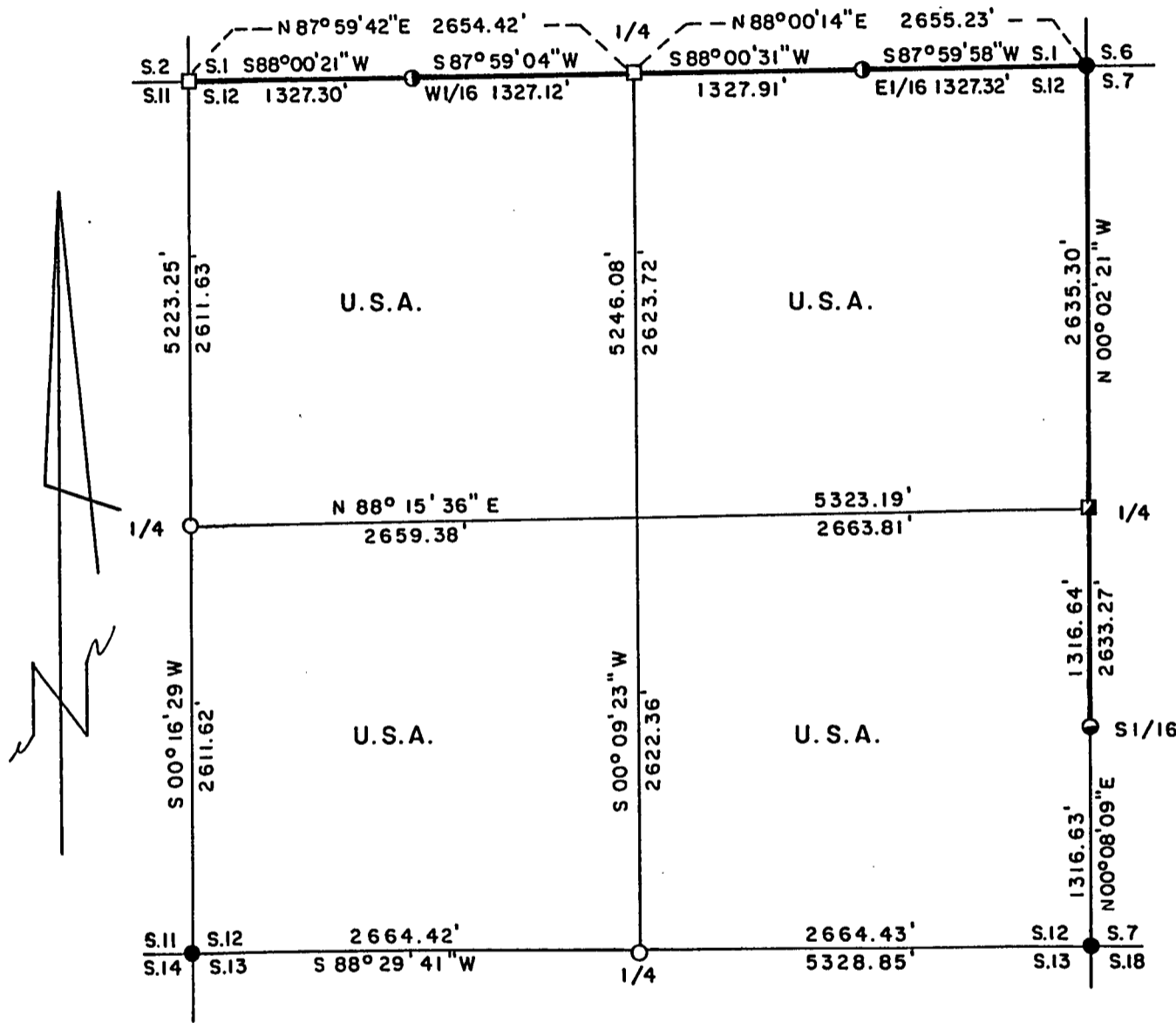
FOREST CO SURVEYOR

FILE # 361412-19970320

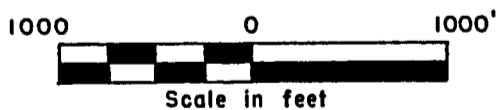
DATE _____ BY _____

PLAT OF SURVEY FOR CERTIFIED LAND CORNER RESTORATION AND ESTABLISHMENT BEING THE CORNERS FOR THE NW 1/4, NE 1/4, SW 1/4, AND SE 1/4 OF SECTION 12, T.36N. R.14E., FOURTH PRINCIPAL MERIDIAN COUNTY OF FOREST, STATE OF WISCONSIN

Sheet 1 of 5



SCALE 1" = 1000'



LEGEND

- 2½ inch diameter aluminum pipe monument with an aluminum cap, Forest Co. monument
- 1 inch dia. iron pipe with an 1½ inch dia. aluminum cap, Consolidated Paper Co.
- 2 inch I.D. iron pipe monument with brass cap set by U.S.F.S.
- 2½ inch diameter aluminum pipe monument with an aluminum cap set by U.S.F.S.
- 2½ inch diameter aluminum pipe monument, 36 inches long with an aluminum cap
- 1 inch diameter aluminum pipe monument, 36 inches long with an aluminum cap
- Boundary line marked to Forest Service standards

SURVEY NOTES

This survey was made by Gary L. Pisoni, a Registered Land Surveyor in the State of Wisconsin, for the U.S.D.A., Forest Service, for the purpose of recovering, restoring, establishing, marking, and perpetuating the corners and boundary lines of U.S. Government Land on the perimeter and within Section 12, Township 36 North, Range 14 East, Fourth Principal Meridian, Forest County, State of Wisconsin, as shown on the plat map herewith.

The Original Government Township Lines was done by Artemas Curtis, U.S. Deputy Surveyor in September of 1857. The original Government Sub-division of this township was done by James McBride, U.S. Deputy Surveyor in July of 1859.

The bearings between corner positions are true bearings referenced to the East One-Half of the North section line of Section 23, as determined by a solar observation by James J. Fronsoe, R.L.S. of Amberg, WI. from a Plat of Survey of August, 1986 of Section 23. All distances shown thereon are in feet and hundredths of feet. The control traverse was measured by use of an electronic distance measuring equipment.

The accuracy of this survey exceeds the State requirements of 1 in 3000.

The field notes and a copy of the Plat of Survey are on file in the Forest Supervisor's Office at Rhinelander, Wisconsin.

CORNERS RECOVERED AND RESTORED1. Northwest Section Corner

In 1982, Daniel K. Pleoger, RLS. restored the corner position from evidence of and old post point, old blazed trees, and old location poster. Placed 2 1/2" pipe monument with stamped cap at corner. In 1993, Gary L. Pisoni, RLS. recovered the corner position and restored bearing trees.

Corner References:

Sugar Maple	5"	N 67°E	8.30 feet
Sugar Maple	8"	S 24°W	12.23 feet
Sugar Maple	7"	N 61°W	23.98 feet

1993 Corner References:

Sugar Maple	5"	N 68°E	8.49 feet
Sugar Maple	12"	S 25°W	12.90 feet
Sugar Maple	11"	N 60°W	23.44 feet
Basswood(new)	11"	S 68°W	25.71 feet
Steel Sign Post		N 14°W	1.24 feet

2. West Sixteenth Corner between Sections 1 and 12

Corner position established by Consolidated Paper Co. in 1982 on line and midway between the Northwest Section Corner and North Quarter Corner.

Corner References:

Sugar Maple	5"	S 72°W	16.97 feet
Sugar Maple	8"	N 27°W	13.95 feet

3. North Quarter Corner

In 1982, Dan K. Pleoger RLS., restored corner position by proportionate measurement methods. No evidence of original corner evidence found. Placed 2 1/2" pipe monument with stamped cap. In 1993, Gary L. Pisoni, RLS. recovered the corner position and restored bearing trees.

1982 Corner References:

Maple (Twin)	6"	S 76°W	19.76 feet
Cedar	7"	S 72°E	25.45 feet
Black Ash	5"	N 66°E	13.00 feet

1993 Corner References:

Ash	6"	N 52°E	15.81 feet
Cedar	11"	S 84°E	25.02 feet
Cedar (new)	7"	S 22°E	27.70 feet
Red Maple (new)	7"	S 14°W	52.73 feet
Steel Sign Post		East	1.95 feet

4. East Sixteenth Corner between Sections 1 and 12

Corner position established by Consolidated Paper Co. in 1982 on line and midway between the Northeast Section Corner and North Quarter Corner.

Corner References:

Black Ash	5"	N 36°W	16.65 feet
Cedar	6"	S 01°E	27.34 feet

5. Northeast Section Corner

In 1966, Jean Resvick, RLS. restored the corner position from a found White Pine bearing tree stump, a scribed cedar post marking corner position and two concrete witness corners 5"x5" with brass cap. Resvick set a galvanized iron pipe with stamped brass cap. In 1993, Gary L. Pisoni, RLS. recovered the corner position and repainted and resigned bearing trees.

1966 Corner References:

Tamarack	4"	S 36°W	91.13 feet
White Pine	6"	N 60°W	79.18 feet
Concrete Wit.Cor.		North	20.00 feet
Concrete Wit.Cor.		N 45°E	25.00 feet
Wood Sign Post		Southwest	1.70 feet
Steel Sign Post		East	2.90 feet

1993 Corner References:

Tamarack	6"	S 36°W	91.13 feet
White Pine	12"	N 60°W	79.34 feet
Concrete Wit.Cor.		North	20.00 feet
Concrete Wit.Cor.		N 45°E	25.00 feet
Wood Sign Post		Southwest	1.70 feet
Steel Sign Post		East	2.90 feet

6. East Quarter Corner

In 1980, Milo E. Stefan, RLS. restored the corner position from original corner evidence and set an aluminum pipe with stamped cap. In 1993, Gary L. Pisoni, RLS. recovered the corner position and repainted bearing trees and added steel sign post.

1980 Corner References:

Cedar	6"	N 77°E	19.97 feet
Black Spruce	6"	S 11°E	40.35 feet
Tamarack	7"	N 29°W	43.52 feet

1993 Corner References:

Steel Sign Post		S 35°W	0.80 feet
-----------------	--	--------	-----------

7. Southeast Section Corner

In 1967, Jean Resvick, RLS. restored the corner position from evidence of original bearing trees. Resvick set a galvanized iron pipe with stamped brass cap.

In 1993, Gary L. Pisoni, RLS. recovered the corner position where he found the monument but bearing trees were missing.

1993 Corner References:

Tamarack	4"	N 63°E	17.66 feet
Tamarack	4"	S 69°E	29.48 feet
Tamarack	3"	S 86°W	13.94 feet
Tamarack	5"	N 11°W	13.99 feet
Steel Sign Post		S 55°W	1.20 feet

8. South Quarter Corner

Corner position restored by single proportionate measurement methods on line between the Southeast corner of Section 12 and the Southwest corner of Section 12.

Corner References:

Steel Sign Post	6'	S 29°W	1.05 feet
Steel Sign Post	6'	North	1.05 feet
Steel Sign Post	6'	N 72°E	0.92 feet

9. Southwest Section Corner

In 1964, Jean F. Resvick, RLS. restored corner position from original bearing tree evidence set by James McBride in 1859, and also found a old sand point marking corner position which he accepted. Resvick replaced sand point with 2" iron pipe with stamped brass cap.

In 1986, James J. Fronsoe, RLS. recovered corner position from evidence set by Jean F. Resvick in 1964.

1986 Corner References:

Cedar	7"	N 22°E	5.90 feet
Hemlock	14"	S 64°E	20.90 feet
Hemlock	18"	S 35°E	7.70 feet
Cedar	7"	S 47°W	30.05 feet
Cedar	6"	N 45°W	62.40 feet
Steel Sign Post	6'	South	0.70 feet

10. West Quarter Corner

Corner position restored by single proportionate measurement methods on line between the Northwest Section corner of Section 12 and the Southwest Section corner of Section 12.

Corner References:

Sugar Maple	7"	S 77°E	23.62 feet
Sugar Maple	6"	S 04°W	23.32 feet
Sugar Maple	5"	N 72°W	8.42 feet
Sugar Maple	10"	N 22°W	32.06 feet
Steel Sign Post		North	0.93 feet

Stock No. 26273

Sheet 5 of 5

CORNERS ESTABLISHED1. South Sixteenth Corner between Sections 12 and 7

Corner position established on line and midway between the Southeast Section corner and East Quarter corner.

Corner References:

White Spruce	8"	S 79°W	17.62 feet
White Spruce	8"	N 22°W	23.37 feet
Steel Sign Post		South	0.75 feet

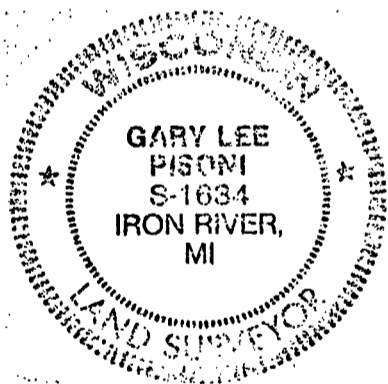
SURVEYOR'S CERTIFICATE

State of Wisconsin)ss
County of Forest)

I, Gary L. Pisoni, a Cadastral Surveyor, and a Registered Land Surveyor in the State of Wisconsin, hereby certify that I have surveyed and sub-divided Section 12, Township 36 North, Range 14 East, Fourth Principal Meridian, State of Wisconsin.

The plat map and survey notes herewith are a correct representation of the land surveyed and divided. I have surveyed and sub-divided said section in accordance with the rules for the survey of public lands and with the statutes of the State of Wisconsin.

Date of Survey: 1993-94



Gary L. Pisoni

Cadastral Surveyor
R.L.S. State of Wisconsin
Certificate S-1634

