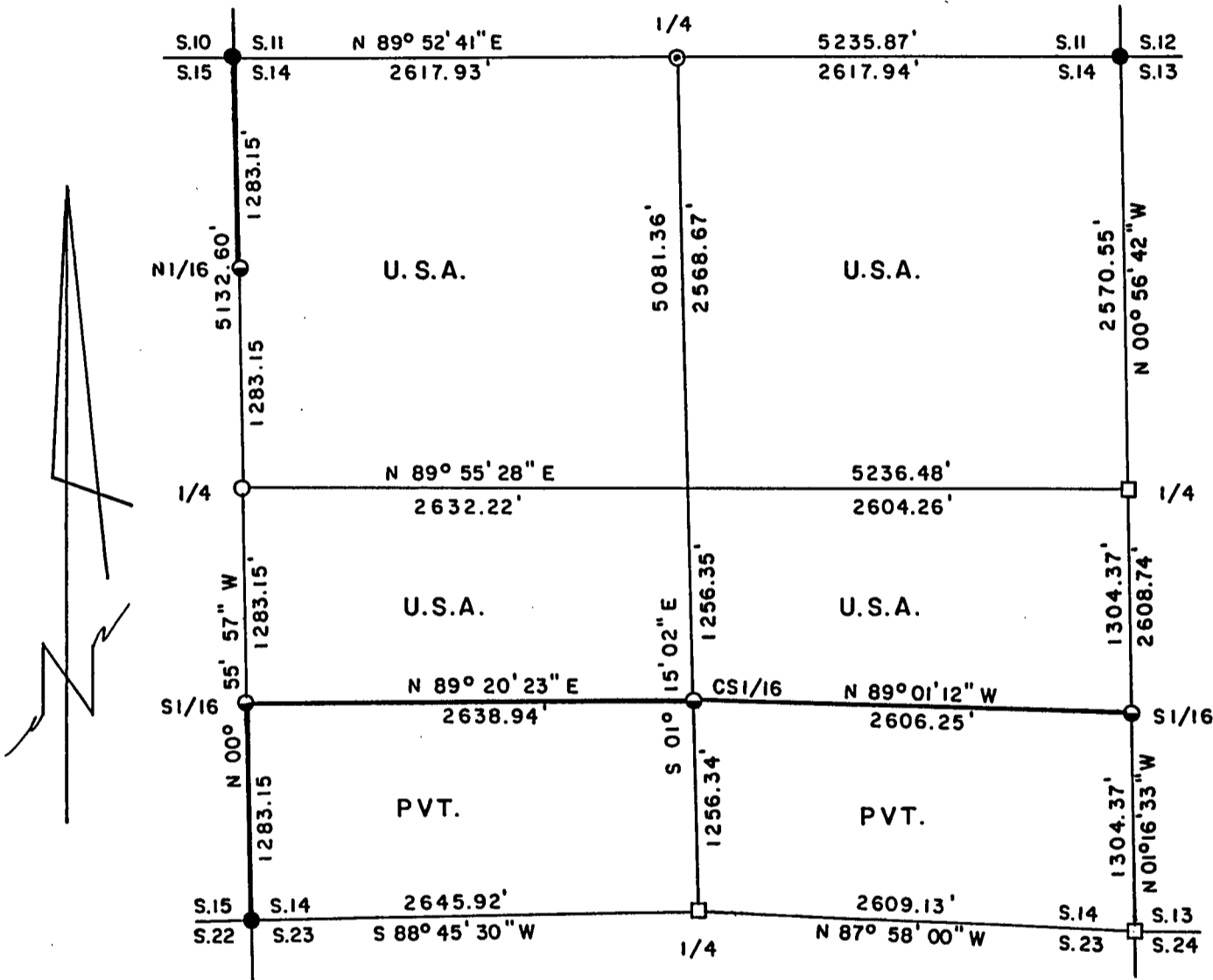


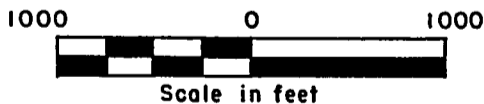
Stock No. 26273

PLAT OF SURVEY FOR CERTIFIED LAND CORNER RESTORATION AND ESTABLISHMENT
 BEING THE CORNERS FOR THE NW1/4, NE1/4, N1/2 - SE1/4, AND N1/2-SW1/4, OF SECTION 14, T.36N.R.14E., FOURTH PRINCIPAL MERIDIAN COUNTY OF FOREST, STATE OF WISCONSIN

Sheet 1 of 5



SCALE 1" = 1000'



FOREST CO SURVEYOR
 FILE # 361414-19970320
 DATE _____ BY _____

LEGEND

- 2 inch I.D. iron pipe monument with brass cap set by U.S.F.S.
- 2 inch diameter aluminum pipe monument with an aluminum cap set by James J. Fronsoe
- ⊙ Chiseled an "X" on a rock to mark the corner and placed a 2½" diameter Witness Corner aluminum pipe monument, 36 inches long with an aluminum cap
- 2½ inch diameter aluminum pipe monument, 36 inches long with an aluminum cap
- 1 inch diameter aluminum pipe monument, 36 inches long with an aluminum cap

— Boundary line marked to Forest Service standards

Stock No. 26273

Sheet 2 of 5

SURVEY NOTES

This survey was made by Gary L. Pisoni, a Registered Land Surveyor in the State of Wisconsin, for the U.S.D.A., Forest Service, for the purpose of recovering, restoring, establishing, marking, and perpetuating the corners and boundary lines of U.S. Government Land on the perimeter and within Section 14, Township 36 North, Range 14 East, Fourth Principal Meridian, Forest County, State of Wisconsin, as shown on the plat map herewith.

The Original Government Township Lines was done by Artemas Curtis, U.S. Deputy Surveyor in September of 1857. The original Government Sub-division of this township was done by James McBride, U.S. Deputy Surveyor in July of 1859.

The bearings between corner positions are true bearings referenced to the East One-Half of the North section line of Section 23, as determined by a solar observation by James J. Fronsoe, R.L.S. of Amberg, WI. from a Plat of Survey of August, 1986 of Section 23. All distances shown thereon are in feet and hundredths of feet. The control traverse was measured by use of an electronic distance measuring equipment.

The accuracy of this survey exceeds the State requirements of 1 in 3000.

The field notes and a copy of the Plat of Survey are on file in the Forest Supervisor's Office at Rhinelander, Wisconsin.

CORNERS RECOVERED AND RESTORED1. Northwest Section Corner

In 1977, Jean F. Resvick, RLS. restored the corner position from original corner evidence and original bearing tree stumps set by James McBride in 1859. Resvick placed 2" galvanized iron pipe with brass cap at corner.

Corner References:

Hemlock	8"	N 61°E	35.00 feet
Hemlock	14"	S 20°E	22.06 feet
White Pine	6"	S 60°W	33.38 feet
Steel Sign Post		East	0.50 feet

2. North Quarter Corner

Corner position restored by single proportionate measurement methods on line between the Northeast corner of 14 and the Northwest corner of Section 14. Corner falls on a large rock. Chiseled an "X" on side of rock and set a Witness Corner, being a 2 1/2" aluminum pipe monument, 36" long and 6" above ground surface.

Corner References:

Sugar Maple	12"	N 35°E	13.66 feet
Sugar Maple	12"	S 48°E	18.70 feet
Sugar Maple	5"	S 24°W	41.97 feet
Basswood	13"	S 65°W	16.57 feet
Witness Corner	2 1/2"x36"	N 89°52.8'E	1.70 feet
Steel Sign Post		East	3.63 feet

Stock No. 26273

Sheet 3 of 5

3. Northeast Section Corner

In 1964, Jean F. Resvick, RLS. restored corner position from original bearing tree evidence set by James McBride in 1859, and also found a old sand point marking corner position which he accepted. Resvick replaced sand point with 2" iron pipe with stamped brass cap.

In 1986, James J. Fronsoe, RLS. recovered corner position from evidence set by Jean F. Resvick in 1964.

1986 Corner References:

Cedar	7"	N 22°E	5.90 feet
Hemlock	14"	S 64°E	20.90 feet
Hemlock	18"	S 35°E	7.70 feet
Cedar	7"	S 47°W	30.05 feet
Cedar	6"	N 45°W	62.40 feet
Steel Sign Post	6'	South	0.70 feet

4. East Quarter Corner

In 1986, James J. Fronsoe, RLS. found a 1 1/2 diameter iron pipe lying down next to a stake hole with a ring of stones. Fronsoe found the remains of the original bearing tree stump holes set by James McBride in 1859 and accepted this as the best available evidence for restoring corner position. Fronsoe set a 2" x 36" aluminum pipe with cap.

Corner References:

Maple	11"	North	38.30 feet
Maple	12"	S 25°W	35.20 feet
Maple	12"	S 71°W	39.55 feet
Maple	6"	N 55°W	37.50 feet
Steel Sign Post		West	1.20 feet

5. Southeast Section Corner

In 1986, James J. Fronsoe, RLS. restored the corner position from an ancient, buried, fence corner post hole that fit swamp calls. Fronsoe accepted this as best available evidence and set an aluminum pipe monument with cap at corner.

Corner References:

Red Pine	5"	N 22°E	61.50 feet
Red Pine	6"	N 71°E	73.30 feet
Aspen	6"	S 61°E	108.40 feet
Aspen	7"	S 04°E	58.20 feet
Steel Sign Post		North	0.70 feet

6. South Quarter Corner

In 1986, James J. Fronsoe, RLS. restored the corner position from evidence of original bearing trees set by James McBride in 1859. Fronsoe set 2" x 36" aluminum pipe with cap at corner.

Corner References:

Balsam	10"	S 35°E	65.50 feet
Spruce	6"	S 16°E	66.70 feet
Hemlock	10"	S 26°W	62.50 feet
Hemlock	5"	S 68°W	94.80 feet
Steel Sign Post		West	1.90 feet

Stock No. 26273

Sheet 4 of 5

7. Southwest Section Corner

In 1964, Jean F. Resvick, RLS. restored the corner position from original evidence set by James McBride in 1859. Resvick set 2" galvanized iron pipe with brass cap at corner.

1967 Corner References by Jean F. Resvick

Yellow Birch	18"	S 37°30'E	74.45 feet
Maple	4"	N 11°W	8.32 feet
Maple	6"	N 21°E	27.37 feet

1986 Corner References by James Fronsoe

Maple	12"	N 41°E	43.70 feet
Maple	7"	S 80°E	17.60 feet
Maple (Twin)	6"	S 10°E	11.60 feet
Maple	6"	N 55°W	30.05 feet
Steel Sign Post	6'	South	1.10 feet

8. West Quarter Corner

Corner position restored by single proportionate measurement methods on line between the Northwest corner of Section 14 and the Southwest corner of Section 14.

Corner References:

Sugar Maple	8"	N 16°E	33.36 feet
Sugar Maple	7"	S 32°E	21.83 feet
Sugar Maple	8"	S 63°W	30.18 feet
Sugar Maple	9"	N 61°W	24.22 feet
Steel Sign Post		East	0.83 feet

CORNERS ESTABLISHED1. South Sixteenth Corner between Sections 13 and 14

Corner position established on line and midway between the Southeast Section corner and East Quarter corner.

Corner References:

Black Spruce	9"	S 06°E	30.31 feet
Black Spruce	8"	N 81°W	12.57 feet
Steel Sign Post		N 36°E	1.15 feet

2. Center South Sixteenth Corner

Corner position established on line and midway between the South Quarter corner and Center Quarter corner.

Corner References:

Hemlock	13"	N 19°W	30.24 feet
Sugar Maple	11"	N 72°E	7.69 feet
Steel Sign Post		S 70°W	1.00 feet

Stock No. 26273

Sheet 5 of 5

3. South Sixteenth Corner between Sections 14 and 15

Corner position established on line and midway between the Southwest Section corner and West Quarter corner.

Corner References:

Sugar Maple	10"	S 22°E	19.01 feet
Sugar Maple	9"	S 59°W	8.07 feet
Steel Sign Post		North	0.85 feet

4. North Sixteenth Corner between Sections 14 and 15

Corner position established on line and midway between the Northwest Section corner and West Quarter corner.

Corner References:

Sugar Maple	11"	N 20°E	32.48 feet
Sugar Maple	6"	S 81°W	36.50 feet
Steel Sign Post		South	0.88 feet

SURVEYOR'S CERTIFICATE

State of Wisconsin)ss
County of Forest)

I, Gary L. Pisoni, a Cadastral Surveyor, and a Registered Land Surveyor in the State of Wisconsin, hereby certify that I have surveyed and sub-divided Section 14, Township 36 North, Range 14 East, Fourth Principal Meridian, State of Wisconsin.

The plat map and survey notes herewith are a correct representation of the land surveyed and divided. I have surveyed and sub-divided said section in accordance with the rules for the survey of public lands and with the statutes of the State of Wisconsin.

Date of Survey: 1993-94

Gary L. Pisoni
Cadastral Surveyor
R.L.S. State of Wisconsin
Certificate S-1634

