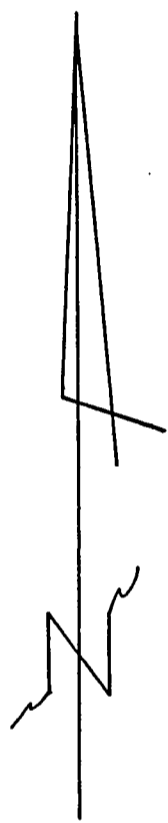
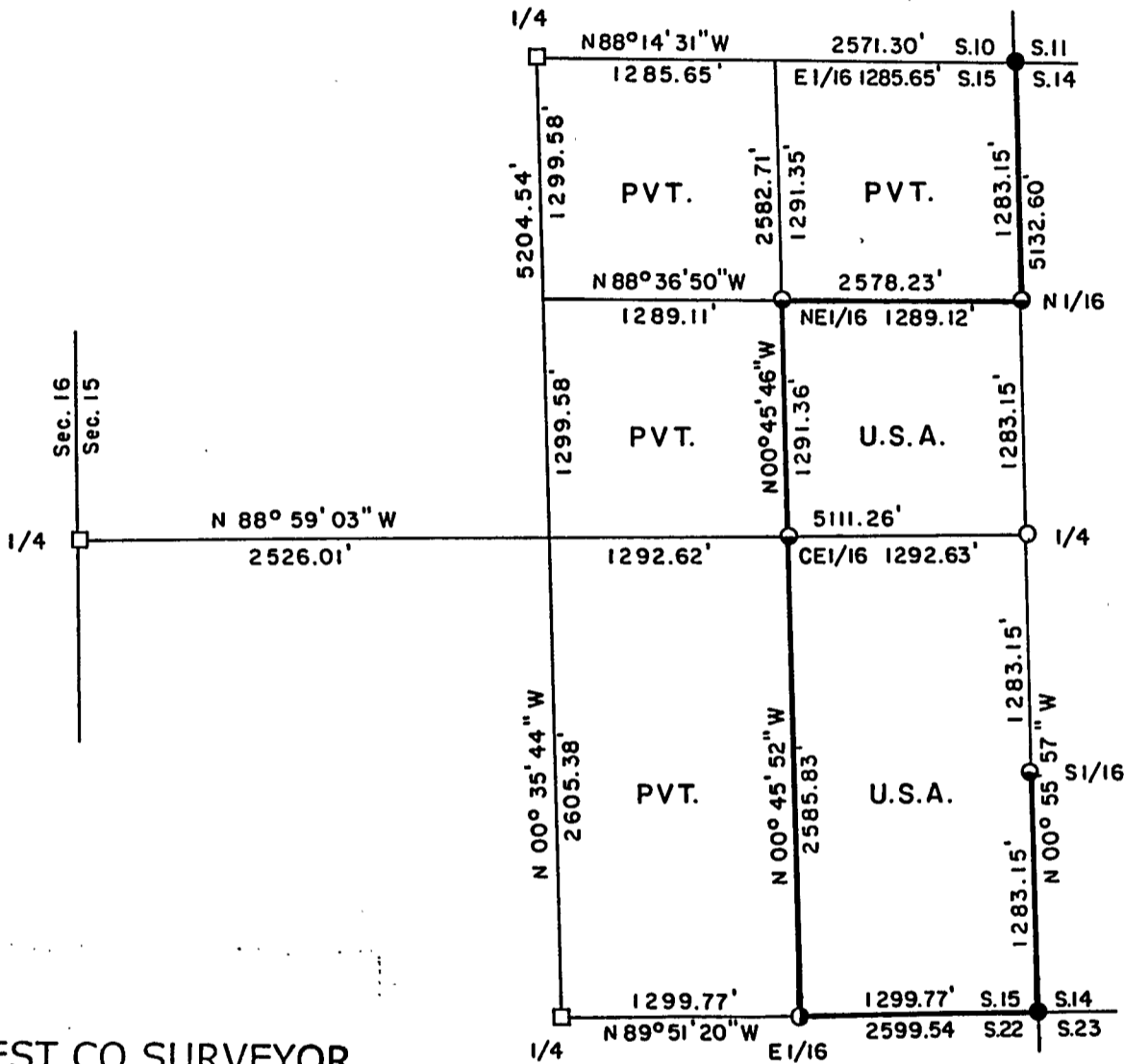


Stock No. 26273

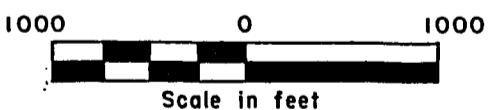
PLAT OF SURVEY FOR CERTIFIED LAND CORNER RESTORATION AND ESTABLISHMENT
 BEING THE CORNERS FOR THE SE 1/4-NE1/4, NE1/4-SE 1/4 AND SE1/4-SE1/4 OF SECTION 15, T.36N.R.14E., FOURTH PRINCIPAL MERIDIAN
 COUNTY OF FOREST, STATE OF WISCONSIN

Sheet 1 of 5



FOREST CO SURVEYOR
 FILE # 361415-19910320
 DATE _____ BY _____

SCALE 1" = 1000'



LEGEND

- 2 inch I.D. iron pipe monument with a brass cap set by U.S.F.S.
- 2 1/2 inch diameter aluminum pipe monument with an aluminum cap, Forest Co. monument
- 1 inch dia. iron pipe with an 1 1/2 inch dia. aluminum cap, Consolidated Paper Co.
- 2 1/2 inch diameter aluminum pipe monument, 36 inches long with an aluminum cap
- 1 inch diameter aluminum pipe monument, 36 inches long with an aluminum cap
- Boundary line marked to Forest Service standards

Stock No. 26273

Sheet 2 of 5

SURVEY NOTES

This survey was made by Gary L. Pisoni, a Registered Land Surveyor in the State of Wisconsin, for the U.S.D.A., Forest Service, for the purpose of recovering, restoring, establishing, marking, and perpetuating the corners and boundary lines of U.S. Government Land on the perimeter and within Section 15, Township 36 North, Range 14 East, Fourth Principal Meridian, Forest County, State of Wisconsin, as shown on the plat map herewith.

The Original Government Township Lines was done by Artemas Curtis, U.S. Deputy Surveyor in September of 1857. The original Government Sub-division of this township was done by James McBride, U.S. Deputy Surveyor in July of 1859.

The bearings between corner positions are true bearings referenced to the East One-Half of the North section line of Section 23, as determined by a solar observation by James J. Fronsoe, R.L.S. of Amberg, WI. from a Plat of Survey of August, 1986 of Section 23. All distances shown thereon are in feet and hundredths of feet. The control traverse was measured by use of an electronic distance measuring equipment.

The accuracy of this survey exceeds the State requirements of 1 in 3000.

The field notes and a copy of the Plat of Survey are on file in the Forest Supervisor's Office at Rhinelander, Wisconsin.

CORNERS RECOVERED AND RESTORED1. North Quarter Corner

In 1976, Philip T. Hansen, RLS. restored the corner position from evidence of squared and scribed wood post set by Consolidated and Connor Forest Industries in 1949. Consolidated Paper Co. replaced old wood post found in 1949 with a 4" squared and scribed wood post. Hansen replaced squared and scribed post with 2 1/2" aluminum pipe monument with stamped cap at corner.

Corner References:

Sugar (OBT)	7"	S 56°W	19.80 feet
Hemlock (OBT)	12"	N 70°E	21.12 feet
Sugar (NBT)	8"	N 68°W	19.21 feet

2. Northeast Section Corner

In 1977, Jean F. Resvick, RLS. restored the corner position from original corner evidence and original bearing tree stumps set by James McBride in 1859. Resvick placed 2" galvanized iron pipe with brass cap at corner.

Corner References:

Hemlock	8"	N 61°E	35.00 feet
Hemlock	14"	S 20°E	22.06 feet
White Pine	6"	S 60°W	33.38 feet
Steel Sign Post		East	0.50 feet

Stock No. 26273

Sheet 3 of 5

3. East Quarter Corner

Corner position restored by single proportionate measurement methods on line between the Northeast corner of Section 15 and the Southeast corner of Section 15.

Corner References:

Sugar Maple	8"	N 16°E	33.36 feet
Sugar Maple	7"	S 32°E	21.83 feet
Sugar Maple	8"	S 63°W	30.18 feet
Sugar Maple	9"	N 61°W	24.22 feet
Steel Sign Post		East	0.83 feet

4. Southeast Section Corner

In 1964, Jean F. Resvick, RLS. restored the corner position from original evidence set by James McBride in 1859. Resvick set 2" galvanized iron pipe with brass cap at corner.

1967 Corner References by Jean F. Resvick:

Yellow Birch	18"	S 37°30'E	74.45 feet
Maple	4"	N 11°W	8.32 feet
Maple	6"	N 21°E	27.37 feet

1986 Corner References by James Fronsoe:

Maple	12"	N 41°E	43.70 feet
Maple	7"	S 80°E	17.60 feet
Maple (Twin)	6"	S 10°E	11.60 feet
Maple	6"	N 55°W	30.05 feet
Steel Sign Post	6'	South	1.10 feet

5. South Quarter Corner

In 1991, Glen Barker, RLS. set a 2 1/2" aluminum capped pipe monument (Forest County Monument) from the found remains of a 3" x 3" squared post and a 1 1/2" diameter pipe. Barker accepted the pipe and post as the best available evidence for restoring corner position.

Corner References:

Black Spruce	6"	N 35°E	63.19 feet
Cedar	9"	S 69°E	34.63 feet
Cedar	12"	S 52°W	30.52 feet
Cedar	10"	N 57°W	29.78 feet

6. West Quarter Corner

In 1976, Philip T. Hansen, RLS. restored the corner position from evidence set by Conner Forest Industries. Connor Forest Ind. recovered and maintained corner from original evidence set by James McBride in 1859 and replaced a 2 1/2" dia. iron pipe with a 2 1/2" aluminum pipe monument.

Corner References:

Hemlock (OBT)		S 05°E	12.54 feet
Sugar (NBT)	8"	N 30°W	26.60 feet
Sugar (NBT)	8"	N 74°W	36.10 feet

Stock No. 26273

Sheet 4 of 5

7. East Sixteenth Corner between Sections 15 and 22

Corner position established by Consolidated Paper Co. in 1992 on line and midway between the Southeast Section corner and South Quarter corner.

Corner References:

Sugar Maple	6"	N 15°E	25.68 feet
Sugar Maple	7"	S 65°E	24.21 feet
Steel Sign Post		West	1.08 feet

CORNERS ESTABLISHED1. South Sixteenth Corner between Sections 14 and 15

Corner position established on line and midway between the Southeast Section corner and East Quarter corner.

Corner References:

Sugar Maple	10"	S 22°E	19.01 feet
Sugar Maple	9"	S 59°W	8.07 feet
Steel Sign Post		North	0.85 feet

2. Center East Sixteenth Corner

Corner position established on line and midway between the East Quarter corner and the Center Quarter corner.

Corner References:

Sugar Maple	9"	N 46°E	33.88 feet
Sugar Maple	5"	N 58°W	31.94 feet
Steel Sign Post		North	1.05 feet

3. Northeast Sixteenth Corner

Corner position established at the intersection of the straight lines between opposing sixteenth corner positions on the perimeter of the Northeast quadrant.

Corner References:

Sugar Maple	6"	S 75°E	27.68 feet
Sugar Maple	8"	S 20°W	25.70 feet
Wood Post	4"X4"	S 14°E	19.63 feet
Steel Sign Post		West	0.73 feet

4. North Sixteenth Corner between Sections 14 and 15

Corner position established on line and midway between the Northeast Section corner and East Quarter corner of Section 15.

Corner References:

Sugar Maple	11"	N 20°E	32.48 feet
Sugar Maple	6"	S 81°W	36.50 feet
Steel Sign Post		South	0.88 feet

Stock No. 26273

Sheet 5 of 5

SURVEYOR'S CERTIFICATE

State of Wisconsin)ss
County of Forest)

I, Gary L. Pisoni, a Cadastral Surveyor, and a Registered Land Surveyor in the State of Wisconsin, hereby certify that I have surveyed and sub-divided Section 15, Township 36 North, Range 14 East, Fourth Principal Meridian, State of Wisconsin.

The plat map and survey notes herewith are a correct representation of the land surveyed and divided. I have surveyed and sub-divided said section in accordance with the rules for the survey of public lands and with the statutes of the State of Wisconsin.

Date of Survey: 1993-94

Gary L. Pisoni

Cadastral Surveyor
R.L.S. State of Wisconsin
Certificate S-1634

