

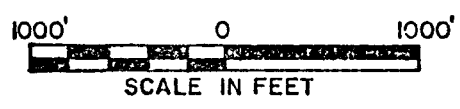
Dora

Copy 1

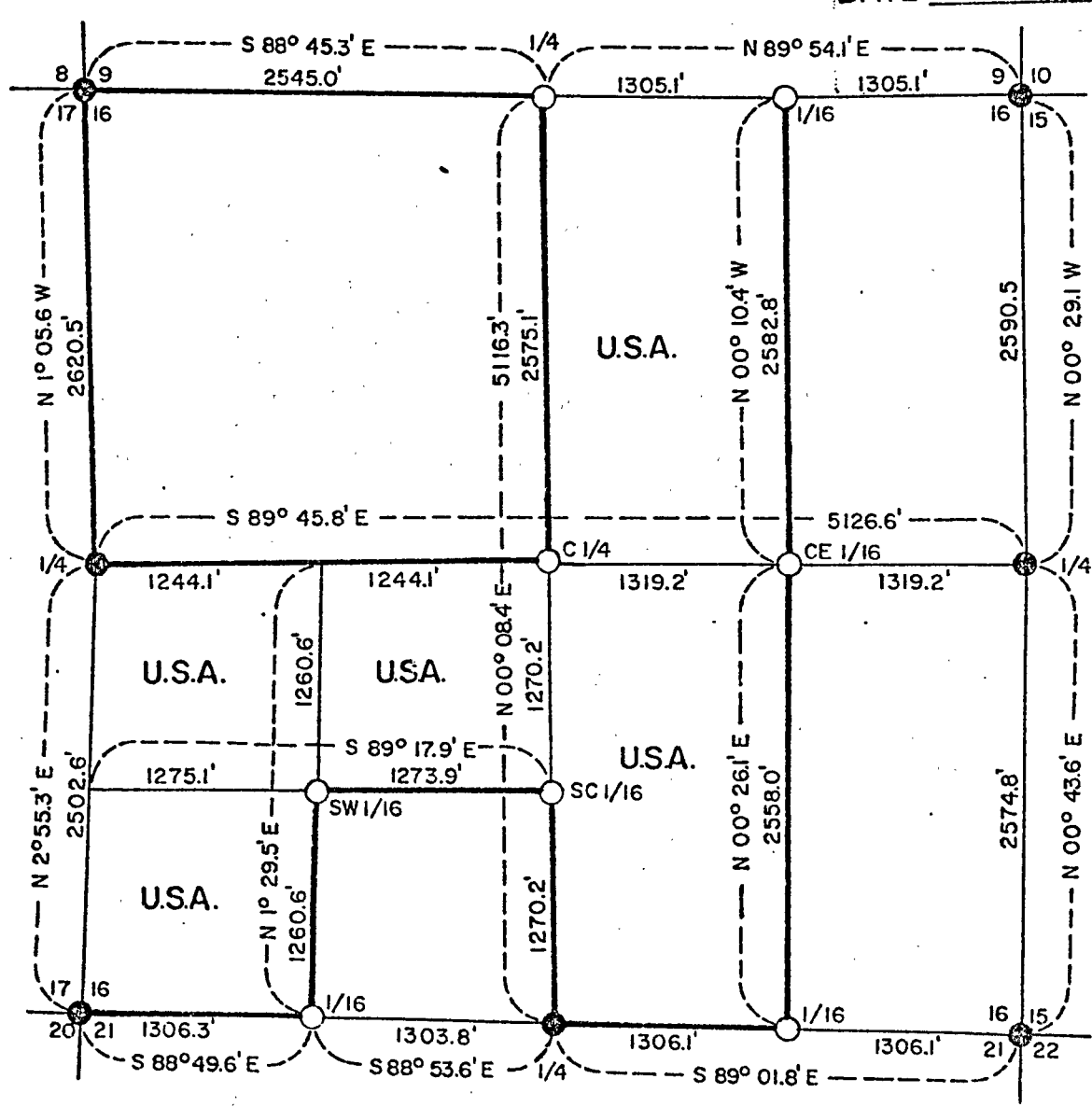
PLAT OF SURVEY U.S. GOVERNMENT LAND

Being the W1/2 NE1/4, W1/16SE1/4, W1/2SW1/4 and
NE1/4SW1/4 Section 16

Township 36 North, Range 14 East, Fourth Principal Meridian
OCONTO COUNTY, WISCONSIN



FOREST CO SURVEYOR
FILE # 361416-19810616
DATE _____ BY _____



LEGEND

- Forest County Monument 2 1/2" Bersten.
- 2" x 30" Aluminum Pipe with 3" Aluminum Cap.
- USA. U.S. Government Lands.
- Marked Boundary of U.S. Government Lands.

CONVERSION FACTORS:

FEE'T to METERS -
0.304801

METERS to FEET -
3.280833

SURVEY NOTES

This survey was made by the U.S. Department of Agriculture, Forest Service, for the purpose of, restoring and establishing corners of the perimeter of section 16, for establishing subdivisional corners within section 16, and for locating and marking the boundaries of U.S. Government land on the perimeter and within section 16, Township 36 North, Range 14 East, 4th Principal Meridian, Forest County, Wisconsin.

The U.S. Government lands in this section were acquired in 1938.

The original government subdivision survey of this township was made in 1859.

The corner positions recovered, restored and established by this survey are marked by the monument described in the map legend.

The corner positions established were located to an accuracy of one point in 3000.

The bearings between corner positions are true bearings or determined by solar observations.

The field notes of this survey and a copy of this plat of survey are on file in the Forest Supervisor's Office at Rhinelander, Wisconsin.

CORNERS RECOVERED AND RESTORED1. Section Corner to Sections 8-9-16-17, T.36N., R.14E.

Corner monument recovered in place as placed by R.L.S. #498 and filed in Forest County Register of Deeds, Document number 108708, dated February 4, 1976.

Corner references:

Sugar maple 7"	N. 1 ^o E.	33.7 feet
Sugar maple 10"	S. 59 ^o E.	22.6 feet
Sugar maple 12"	S. 17 ^o W.	28.5 feet
* Sugar maple 5"	N. 69 ^o W.	23.5 feet
Steel sign post	West	.9 feet

2. Section Corner to Sections 9-10-15-16, T.36N., R.14E.

Corner monument recovered in place as placed by R.L.S. #498 and filed in Forest County Register of Deeds, Document number 108709, dated February 4, 1976.

Corner references:

Cedar 7"	N. 20 ^o E.	26.6 feet
Cedar 12"	S. 58 ^o E.	24.4 feet
Hemlock 12"	S. 76 ^o W.	13.9 feet
* Cedar 9"	N. 53 ^o W.	50.5 feet
Steel sign post	Northwest	1.2 feet

3. Section Corner to Sections 15-16-21-22, T.36N., R.14E.

Corner monument recovered in place as placed by R.L.S. #498 and filed in Forest County Register of Deeds, Document number 108720, dated February 4, 1976.

Corner references:

* Cedar 8"	S. 44 ^o E.	46.7 feet
Cedar 12"	S. 80 ^o W.	35.8 feet
Cedar 9"	N. 26 ^o W.	19.3 feet
Cedar 6"	N. 65 ^o W.	25.2 feet
Steel sign post	Northwest	.9 feet

4. Section Corner to Sections 16-17-20-21, T.36N., R.14E.
 Corner monument recovered in place as placed by R.L.S. #498 and
 filed in Forest County Register of Deeds, Document number 108718,
 dated February 4, 1976.

Corner references:

Sugar maple 14"	N.28°E.	22.3 feet
Sugar maple 11"	S.54°E.	28.5 feet
Sugar maple 10"	S.14°W.	13.5 feet
Yellow Birch 22"	N.51°W.	30.4 feet
Steel sign post	Northwest	1.2 feet

5. Quarter Corner to Sections 16-17.
 Corner monument recovered in place as placed by R.L.S. #498 and
 filed in Forest County Register of Deeds, Document number 108714,
 dated February 4, 1976.

Corner references:

Sugar maple 7"	N.88°W.	15.1 feet
* Sugar maple 8"	N.70°E.	31.6 feet
* Sugar maple 10"	S.10°E.	23.2 feet
Steel sign post	Southwest	.8 feet

6. Quarter Corner to Sections 15-16.
 Corner monument recovered in place as placed by R.L.S. #498 and
 filed in Forest County Register of Deeds, Document number 108715,
 dated February 4, 1976.

Corner references:

Sugar maple 8"	N.30°	26.6 feet
Sugar maple 8"	N.74°	36.1 feet
Hemlock 23"	S. 5°E.	16.5 feet
Steel sign post	Northwest	.8 feet

7. Quarter Corner to Sections 16-21.
 Corner monument recovered in place as placed by R.L.S. #498 and
 filed in Forest County Register of Deeds, Document number 108719,
 dated February 4, 1976.

Corner references:

Sugar maple 7"	N.57°E.	21.6 feet
Hemlock 14"	S.31°E.	23.2 feet
Hemlock 9"	S.50°W.	33.0 feet
Steel sign post	Northeast	1.3 feet

8. Quarter Corner to Sections 9-16.
 Corner position found marked by an ironpipe in mound of stone.
 Location in accordance with original bearing trees. Replaced
 iron pipe with monument as indicated in map legend.

Corner references:

Hemlock 15"	N.81°E.	71.5 feet
Sugar maple 8"	S.77°W.	24.0 feet
Hemlock 17"	N.57°W.	45.0 feet
Steel sign post	Northeast	1.1 feet

CORNERS ESTABLISHED1. Center Quarter Corner.

Corner position established on the intersection of straight lines between opposing quarter corners on the perimeter of the section.

Corner references:

Sugar maple 13"	N. 9°E.	67.4 feet
Pin cherry 4"	S. 31°W.	54.9 feet
Sugar maple 21"	N. 18°W.	91.2 feet
Steel sign post	Southeast	.85 feet

2. East Sixteenth Corner to Sections 9-16.

Corner position established at midpoint and on line between the north quarter corner and northeast corner of section 16.

Corner references:

Sugar maple 8"	N. 38°E.	22.5 feet
Sugar maple 7"	S. 71°W.	6.4 feet
Sugar maple 6"	N. 27°W.	5.4 feet
Steel sign post	Northwest	1.1 feet

3. Center East Sixteenth Corner.

Corner position established at midpoint and on line between the center quarter corner and the east quarter corner of section 16.

Corner references:

Sugar maple 6"	N. 16°E.	43.6 feet
Hemlock 25"	S. 38°E.	61.9 feet
Sugar maple 7"	N. 78°W.	14.1 feet
Steel sign post	Northwest	1.0 feet

4. Southwest Sixteenth Corner.

Corner position established on the intersection of straight lines between opposing sixteenth corner positions on the perimeter of the southwest quarter of section 16.

Corner references:

Sugar maple 8"	S. 43°E.	28.9 feet
Sugar maple 5"	S. 73°W.	6.2 feet
Sugar maple 5"	N. 57°W.	22.1 feet
Steel sign post	Northwest	.6 feet

5. Center South Sixteenth Corner.

Corner position established at midpoint and on line between the center quarter corner and the south quarter corner of section 16.

Corner references:

Yellow birch 5"	N. 81°E.	37.4 feet
Sugar maple 4"	S. 2°E.	5.9 feet
Sugar maple 8"	N. 41°W.	18.9 feet
Steel sign post	Northeast	.7 feet

6. West Sixteenth Corner.

Corner position found marked by an iron pipe. Location accepted as the corner position.

Corner references:

Hemlock 13"	N. 47°E.	31.52 feet
Yellow birch 11"	S. 35°E.	20.39 feet
Hemlock 13"	N. 50°W.	12.65 feet
Steel sign post	Northwest	1.4 feet

Stock No. 26273

Sheet 5 of 5

7. East Sixteenth Corner.

Corner position established at midpoint and on line between the south quarter corner and the southeast section corner of section 16.

Corner references:

Cedar 6"	N.67°E.	6.58 feet
Hemlock 12"	S. 6°E.	8.92 feet
Cedar 19"	S.71°W.	23.93 feet
Steel sign post	Northwest	.8 feet

SURVEYOR'S AFFIDAVIT

State of Wisconsin SS
County of Forest SS

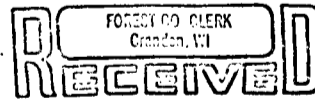
I, Milo E. Stefan, Cadastral Surveyor, U.S. Forest Service and a registered surveyor in the State of Wisconsin, hereby certify that I have surveyed and subdivided section 16; township 36 north, range 14 east, Fourth Principal Meridian, State of Wisconsin.

The plat map and the notes herewith are a correct representation of the land surveyed and divided. I have surveyed and subdivided said section in accordance with the rules for survey of the public lands and with the statutes of the State of Wisconsin.



Date of Survey: 1980

Milo E. Stefan
Cadastral Surveyor, U.S. Forest Service
R.L.S. State of Wisconsin
Certificate S-1558



June 16 1981
Sallie L. Deer