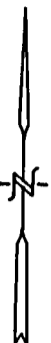


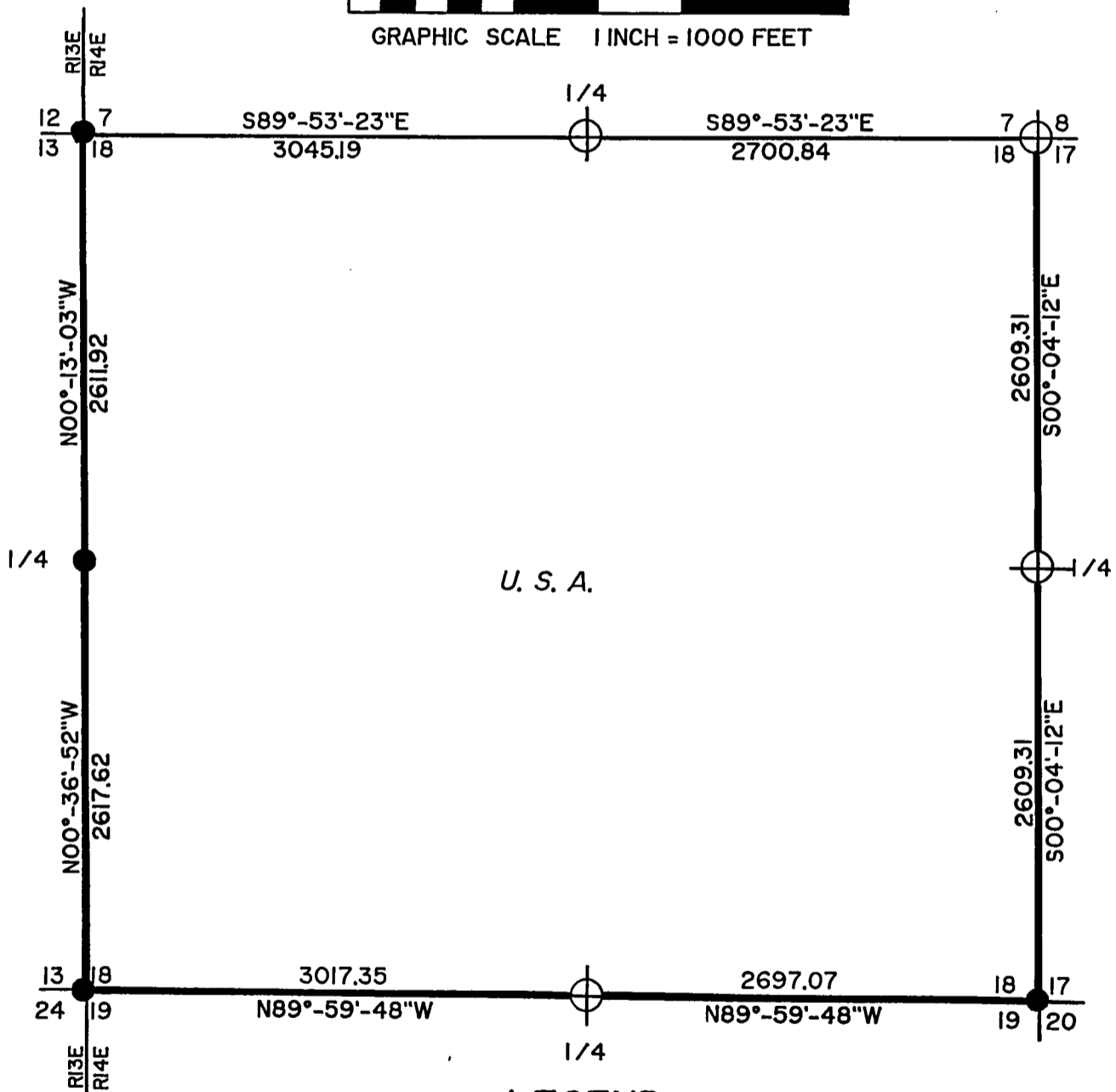
PLAT OF SURVEY U.S. GOVERNMENT LANDS

BEING ALL OF SECTION 18,
TOWNSHIP 36 NORTH, RANGE 14 EAST,
FOURTH PRINCIPAL MERIDIAN,





FOREST COUNTY, WISCONSIN



GRAPHIC SCALE 1 INCH = 1000 FEET



LEGEND

-  = 2-1/2" X 36" ALUMINUM CAPPED PIPE - SET THIS SURVEY
-  = FOUND ALUMINUM CAPPED PIPE
-  = FOUND IRON PIPE WITH BRASS CAP
-  = BOUNDARY LINE MARKED TO FOREST SERVICE STANDARDS

FOREST CO SURVEYOR
 FILE # 361418-19930652
 DATE _____ BY _____

Stock No. 26273

SHEET 2 OF 4

SECTION 18 - T36N-R14E
SURVEY NOTES

This survey was made by Coleman Engineering Company for the U.S. Department of Agriculture - Forest Service under Contract No. 53-56A6-2-788 for the purpose of restoring and establishing corners on the perimeter of Section 18, and for locating and marking the boundaries of U.S. Government lands along the perimeter of Section 18, Township 36 North, Range 14 East, Fourth Principal Meridian, Forest County, State of Wisconsin.

The U.S. Government acquired ownership of Section 18 in 1935.

The original township line and subdivision surveys of T36N-R14E were completed in May, 1858, and July, 1859, respectively.

The corner positions recovered, restored and established by this survey are marked by the monument described in the map legend.

The corner positions established were located to a minimum accuracy of 1 part in 5000.

The bearings between corner positions are true bearings and determined by solar (hour-angle) observations.

The field notes of the survey and a copy of the plat are on file in the Forest Supervisor's office in Rhinelander, Wisconsin.

CORNERS RECOVERED OR RESTORED

1. Standard Corner Common to Sections 7 and 18, T36N-R14E and Sections 12 and 13, T36N-R13E

Corner position monumented by C. E. Walker in 1938. Recovered by Thomas R. Arnott, RLS 887, in 1975. Certificate on field in Forest County - Document No. 108078.

Established corner references:

Cedar	9"	N 18° E	34.03 Feet
Spruce	10"	N 76° E	29.43 Feet
Cedar	12"	S 22° W	31.76 Feet
Cedar	11"	N 85° W	49.17 Feet
Steel Sign Post		East	2± Feet

2. Quarter Corner Common to Sections 7 and 18

Corner position restored by single proportionate methods between the southwest corner of Section 7 and the southeast corner of Section 7.

Established corner references:

Sugar	7"	N 12° W	28.76 Feet
Sugar	8"	S 73° E	17.06 Feet
Sugar	10"	S 05° W	67.29 Feet
Sugar	6"	S 63° W	64.70 Feet
Steel Sign Post		West	1.80 Feet

Stock No. 26273

SHEET 3 OF 4

3. Section Corner Common to Sections 7, 8, 17 and 18

Corner position restored by double proportionate methods between the northeast corner of Section 7 and the southeast corner of Section 18; and the northwest corner of Section 18 and the north quarter corner of Section 17.

Established corner references:

B. Cherry	9"	N 58° E	26.12 Feet
Sugar	10"	S 78° E	18.87 Feet
B. Cherry	9"	S 43° W	45.04 Feet
B. Cherry	9"	N 17° W	45.46 Feet
Steel Sign Post		West	2.02 Feet

4. Quarter Corner Common to Sections 17 and 18

Corner position restored by single proportionate methods between northeast corner of Section 18 and southeast corner of Section 18.

Established corner references:

B. Cherry	6"	N 20° E	66.93 Feet
Balsam	7"	S 61° E	136.54 Feet
Balsam	9"	S 37° W	80.44 Feet
Cedar	11"	N 71° W	29.24 Feet
Steel Sign Post		West	1.99 Feet

5. Section Corner Common to Sections 17, 18, 19 and 20

Corner position recovered and re-monumented by Jean F. Resvick, RLS 802, in 1977. Certificate on file in Forest County - Document No. 113298.

Established additional corner references:

White Pine	17"	N 54° E	23.14 Feet
Tamarack	5"	S 23° W	52.30 Feet
Tamarack	8"	N 87° W	50.41 Feet
Spruce	7"	N 07° W	36.28 Feet
Steel Sign Post		Northwest	2.53 Feet

6. Quarter Corner Common to Sections 18 and 19

Corner position restored by single proportionate methods between southeast corner of Section 18 and southwest corner of Section 18.

Established corner references:

Sugar	12"	N 73° E	33.05 Feet
Sugar	12"	S 15° E	29.28 Feet
Hemlock	11"	S 30° W	49.93 Feet
Hemlock	11"	N 36° W	9.30 Feet
Steel Sign Post		North	1.79 Feet

Stock No. 26273

SHEET 4 OF 4

7. Standard Corner Common to Sections 18 and 19, T36N-R14E and Sections 13 and 24, T36N-R13E

Corner position monumented by C. E. Walker in 1938.

Existing corner references:

Sugar	18"	N 40° E	51.68 Feet
Sugar	20"	S 40° E	8.85 Feet
Sugar	11"	S 36° W	16.44 Feet
Sugar	23"	N 59° W	44.83 Feet

8. Standard Quarter Corner Common to Section 18, T36N-R14E and Section 13, T36N-R13E

Corner position monumented by C. E. Walker in 1938.

Established corner references:

Sugar	9"	N 50° E	48.78 Feet
Yellow Birch	10"	S 70° E	23.09 Feet
Yellow Birch	11"	S 35° W	27.23 Feet
Sugar	9"	N 49° W	39.70 Feet

SURVEYOR'S AFFIDAVIT

State of Wisconsin)
 County of Forest) S.S.

I, John R. Garske, a registered surveyor in the State of Wisconsin, hereby certify that this survey of Section 18, Township 36 North, Range 14 East, Fourth Principal Meridian, State of Wisconsin, was performed under my direct responsible supervision.

The plat map and the notes herewith are a correct representation of the land surveyed and divided. I have surveyed and subdivided said section in accordance with the rules for survey of the public lands and with the statutes of the State of Wisconsin.



John R. Garske
 John R. Garske
 Coleman Engineering Company
 R.L.S., State of Wisconsin
 License No. S-1685

Plat ready for filing:

Sue Vap
 District Ranger

Date of Survey: 1993

