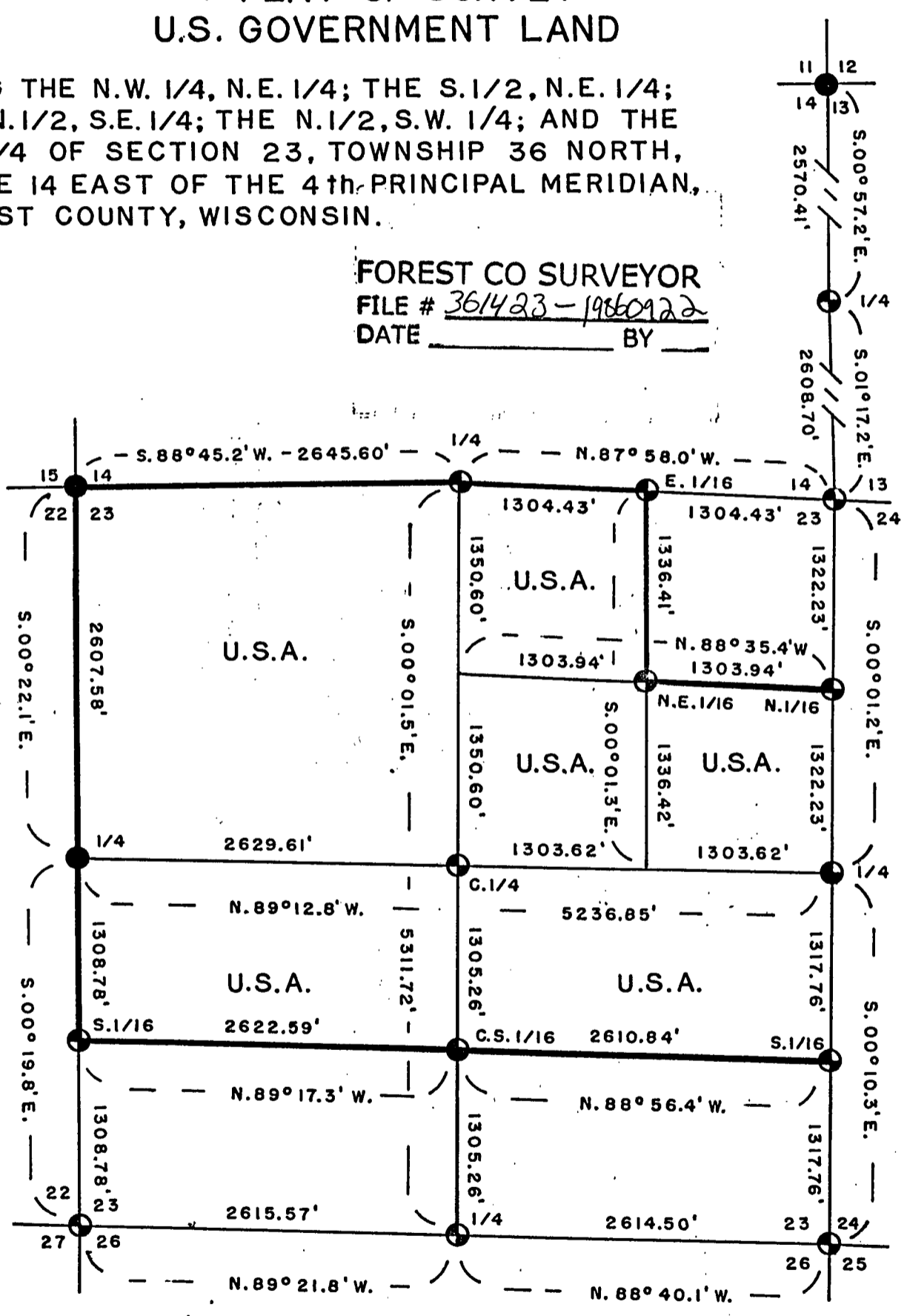
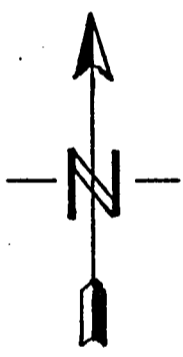






PLAT OF SURVEY U.S. GOVERNMENT LAND

BEING THE N.W. 1/4, N.E. 1/4; THE S. 1/2, N.E. 1/4;
THE N. 1/2, S.E. 1/4; THE N. 1/2, S.W. 1/4; AND THE
N.W. 1/4 OF SECTION 23, TOWNSHIP 36 NORTH,
RANGE 14 EAST OF THE 4th PRINCIPAL MERIDIAN,
FOREST COUNTY, WISCONSIN.

FOREST CO SURVEYOR
FILE # 361423-19860922
DATE _____ BY _____



LEGEND

-  MARKED BOUNDARY LINE OF U.S. GOVERNMENT LAND
-  2" ALUMINUM MONUMENT 36" LONG
-  2" ALUMINUM MONUMENT 60" LONG
-  MONUMENT FOUND AND USED

CONVERSION FACTORS:
FEET TO METERS- 0.304801
METERS TO FEET- 3.28033

Stock No. 26273

SHEET 2 OF 5SURVEY NOTES

This survey was made by James J. Franson R.L.S. of Amberg, WI on behalf of the U.S. Department of Agriculture, Forest Service, for the purpose of restoring and establishing corners on the perimeter of section 23, for establishing subdivisional corners within section 23 and for locating and marking the boundaries of U.S. Government land on their perimeter and within section 23, Township 36 North, Range 14 East of the 4th Principal Meridian, Forest County, Wisconsin.

The U.S. Government lands in this section were acquired in 1935 and 1984.

The original government subdivision of this township was made in 1859.

The corner positions recovered, restored and established by this survey are marked by the monument described in the map legend.

The corner positions established were located to an accuracy of 1 part in 3000.

The bearings between corner positions are true bearings as determined by solar observations.

The field notes of this survey and a copy of this plat are on file in the Forest Supervisor's Office at Rhineland, Wisconsin.

CORNERS RECOVERED AND/OR RESTORED1. Section Corner to Sections 13,14,23 and 24, T.36 N.,R.14 E.

Corner position found marked by an ancient, buried, fence corner post hole, the surrounding area is badly disturbed by grading and plowing, a search for the original B.T.s was fruitless.

Corner References;

B.T. R.Pine	5"	N.22 E.	61.5'
B.T. R.Pine	6"	N.71 E.	73.3'
B.T. Aspen	6"	S.61 E.	108.4'
B.T. Aspen	7"	S.04 E.	58.2'
S.S.P.	.	NORTH	0.7'

2. Quarter Corner to Sections 23 and 24, T.36 N.,R.14 E.

Corner position recovered from the remains of the original B.T. stumps.

Corner References;

B.T. Spruce	4"	N.12 E.	65.3'
B.T. Spruce	4"	N.48 E.	42.8'
B.T. Spruce	4"	S.72 W.	54.5'
B.T. Spruce	6"	N.73 W.	84.9'
S.S.P.	.	SOUTH	1.8'

Stock No. 26273

SHEET 3 OF 5

3. Section Corner to Sections 23,24,25 and 26, T.36 N.,R.14 E.

Corner position found marked by a 1 1/4" rd. iron pin set in ancient stake hole; found remains of original B.T.s as follows; Stp. Hole 1 1/2' S.55 E. 19.5', Stp. Hole 1' S.23 W. 22', Stp. Hole 2' N.28 W. 21'.

Corner References;

B.T. Maple	12"	N.17 E.	38.25'
B.T. Cherry	9"	S.75 E.	37.25'
B.T. Maple	8"	S.31 W.	23.1'
B.T. Maple	7"	N.36 W.	18.05'
S.S.P.		SOUTH	1.6'

4. Quarter Corner to Sections 23 and 26, T.36 N.,R.14 E.

Corner position found marked by an old 2" iron pipe in ancient, fallen, fence corner.

Corner References;

B.T. Basswood	10"	N.17 E.	18.6'
B.T. Maple	14"	N.84 E.	16.6'
B.T. Maple	10"	S.89 W.	36.3'
B.T. Maple(cluster)	7"	N.71 W.	16.3'
S.S.P.		NORTH	1.6'

5. Section Corner to Sections 22,23,26 and 27, T.36 N.,R.14 E.

Corner position found marked by a 1 1/2" iron pipe in ancient fence corner, fence is recently rebuilt; found remains of original B.T.s as follows; Stp. Hole 1' N.78 E. 27.5', Stp. Hole 1 1/2' S.05 W. 22.2', Stp. Hole 2' N.50 W. 26'.

Corner References;

B.T. Maple	9"	N.63 E.	20.7'
B.T. Maple	6"	S.48 W.	28.7'
B.T. Maple	8"	N.74 W.	38.4'
B.T. Maple	5"	N.26 W.	9.4'
S.S.P.		NORTH	1.5'

6. Quarter Corner to Sections 22 and 23, T.36 N.,R.14 E.

Corner position found marked by a 2" iron pipe with cap in mound of stones; found a very old 3" sq. wood stake lying by pipe; found existing B.T.s as follows; Birch 7" S.30 E. 12.8', Birch 7" N.61 W. 8.8'.

Corner References;

B.T. Birch	7"	N.81 E.	19.9'
B.T. Birch	7"	S.70 E.	29.1'
B.T. Birch	10"	S.32 W.	14.5'
B.T. Birch	8"	N.50 W.	12.2'
S.S.P.		NORTH	1.2'

7. Section Corner to Sections 15,14,22 and 23, T.36 N.,R.14 E.

Corner position found marked by a 2" iron pipe with cap; found existing B.T.s as follows; Maple 6" N.12 W. 8.4', Maple 12" N.19 E. 27.7', Y.Birch 18" S.40 E. 74.3'.

Corner References;

B.T. Maple	12"	N.41 E.	43.7'
B.T. Maple	7"	S.80 E.	17.6'
B.T. Maple(twin)	6"	S.10 E.	11.6'
B.T. Maple	6"	N.55 W.	30.05'
S.S.P.		SOUTH	1.1'

Stock No. 26273

SHEET 4 OF 5

8. Quarter Corner to Sections 14 and 23, T.36 N., R.14 E.

Corner position recovered from remains of original B.T.s; found evidence of B.T.s as follows; Rotted Pine Stump 2' N.60 E. 9.9', Stp. Hole 1 1/2' S.30 W. 13'; at position indicated by remains of B.T.s, found soil discoloration in clay bearing soil indicating the core of an ancient stake hole.

Corner References;

B.T. Balsam	10"	S.35 E.	65.5'
B.T. Spruce	6"	S.16 E.	66.7'
B.T. Hemlock	10"	S.26 W.	62.5'
B.T. Hemlock	5"	S.68 W.	94.8'
S.S.P.		WEST	1.85'

9. Quarter Corner to Sections 13 and 14, T.36 N., R.14 E.

Corner position found marked by an ancient stake hole in a ring of stones; found a 1 1/2" iron pipe lying down next to stake hole; found remains of original B.T.s as follows; Stp. Hole 2' S.39 E. 24.4', Stp. Hole 3' N.44 W. 9.0'.

Corner References;

B.T. Maple	11"	NORTH	38.3'
B.T. Maple	12"	S.25 W.	35.2'
B.T. Maple	12"	S.71 W.	39.55'
B.T. Maple	6"	N.55 W.	37.5'
S.S.P.		WEST	1.2'

10. Section Corner to Sections 11,12,13 and 14, T.36 N., R.14 E.

Corner position found marked by a 2" iron pipe with cap; found a 1" iron pipe driven 0.2' N.W. of 2" pipe; found very old 3" sq. cedar stake leaning against a tree; found remains of original B.T.s as follows; Hemlock Stp. Hole 3' N.70 W. 5.5', Hemlock Stp Hole 2' N.45 E. 15.4', Rotted Cedar Stp. 18" S.20 E. 26.5'.

Corner References, drove 60d spikes in existing B.T.s as follows:

Cedar	7"	N.22 E.	5.9'
Hemlock	14"	S.64 E.	20.9'
Hemlock	18"	S.35 E.	7.7'
Cedar	7"	S.47 W.	30.05'
Cedar	6"	N.45 W.	62.4'

CORNERS ESTABLISHED1. N.1/16 Corner to Sections 23 and 24, T.36 N., R.14 E.

Corner established at midpoint on line between the east 1/4 corner and the northeast corner of section 23.

Corner References;

B.T. Maple	8"	N.40 E.	20.65'
B.T. Basswood	9"	S.84 E.	24.95'
B.T. Maple	5"	S.23 E.	36.1'
S.S.P.		WEST	1.0'

2. S.1/16 Corner to Sections 23 and 24, T.36 N., R.14 E.

Corner established at midpoint on line between the east 1/4 corner and the southeast corner of section 23.

Corner References;

B.T. Maple	8"	N.63 E.	9.7'
B.T. Maple	7"	S.47 W.	20.5'
B.T. Maple	10"	N.34 W.	22.6'
S.S.P.		WEST	1.1'

3. S.1/16 Corner to Sections 22 and 23, T.36 N., R.14 E.

Corner established at midpoint on line between the west 1/4 corner and the southwest corner of section 23.

Corner References;

B.T. Maple	5"	N.68 E.	24.45'
B.T. Maple	12"	S.44 E.	3.9'
B.T. Maple	7"	N.44 W.	21.5'
S.S.P.		NORTH	1.9'
Iron Pipe	1 1/2"	N.42 E.	9.98'

Stock No. 26273

SHEET 5 OF 5

4. E.1/16 Corner to Sections 14 and 23, T.36 N.,R.14 E.

Corner established at midpoint on line between the north 1/4 corner and the northeast corner of section 23.

Corner References;

B.T. Tamarack	6"	N.02 E.	44.8'
B.T. Tamarack	7"	N.63 E.	30.2'
B.T. Tamarack	4"	N.65 W.	29.2'
S.S.P.		WEST	1.0'

5. N.E. 1/16 Corner to Section 23, T.36 N.,R.14 E.

Corner established at the intersection of the north and east 1/16 lines of section 23.

Corner References;

B.T. Aspen	6"	N.53 E.	29.8'
B.T. Aspen	5"	S.22 W.	23.1'
B.T. Tamarack	9"	N.24 W.	54.0'
S.S.P.		NORTH	1.2'

6. Center 1/4 Corner to Section 23, T.36 N.,R.14 E.

Corner established at the intersection of the N.-S. and the E.-W. quarter lines of section 23.

Corner References;

B.T. Birch	9"	N.40 E.	12.1'
B.T. Maple(twin)	11"	S.02 E.	27.2'
B.T. Birch(twin)	9"	S.60 E.	7.9'
B.T. Birch	8"	N.40 W.	9.4'
S.S.P.		WEST	1.1'

7. Center S. 1/16 Corner to Section 23, T.36 N.,R.14 E.

Corner established at midpoint on line between the center 1/4 corner and the south 1/4 corner of section 23.

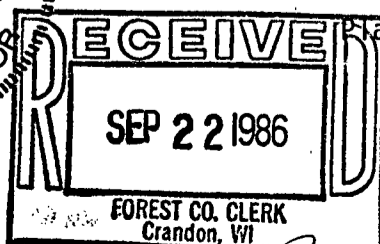
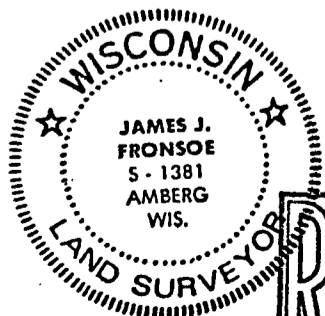
Corner References;

B.T. Tamarack	5"	N.33 E.	139.6'
B.T. Tamarack	4"	N.71 E.	176.4'
B.T. Aspen	6"	S.32 E.	165.2'
S.S.P.		EAST	1.4'

SURVEYOR'S AFFIDAVITState of Wisconsin : ss
County of Forest

I, James J. Fronsoe, a registered land surveyor in the State of Wisconsin, do hereby certify; that I have surveyed and subdivided Section 23, T.36 N., R.14 E. of the 4th Principal Meridian, State of Wisconsin.

The plat map and the notes herewith are a correct representation of the land surveyed and divided. I have surveyed and subdivided said section in accordance with the rules for the survey of the public lands and the statutes of the State of Wisconsin.



James J. Fronsoe
 R.L.S. State of Wisconsin
 Registration # S- 1381
 Dated; August, 1986

Plat Approved *Doris Stage*
 District Ranger

Dora C. James