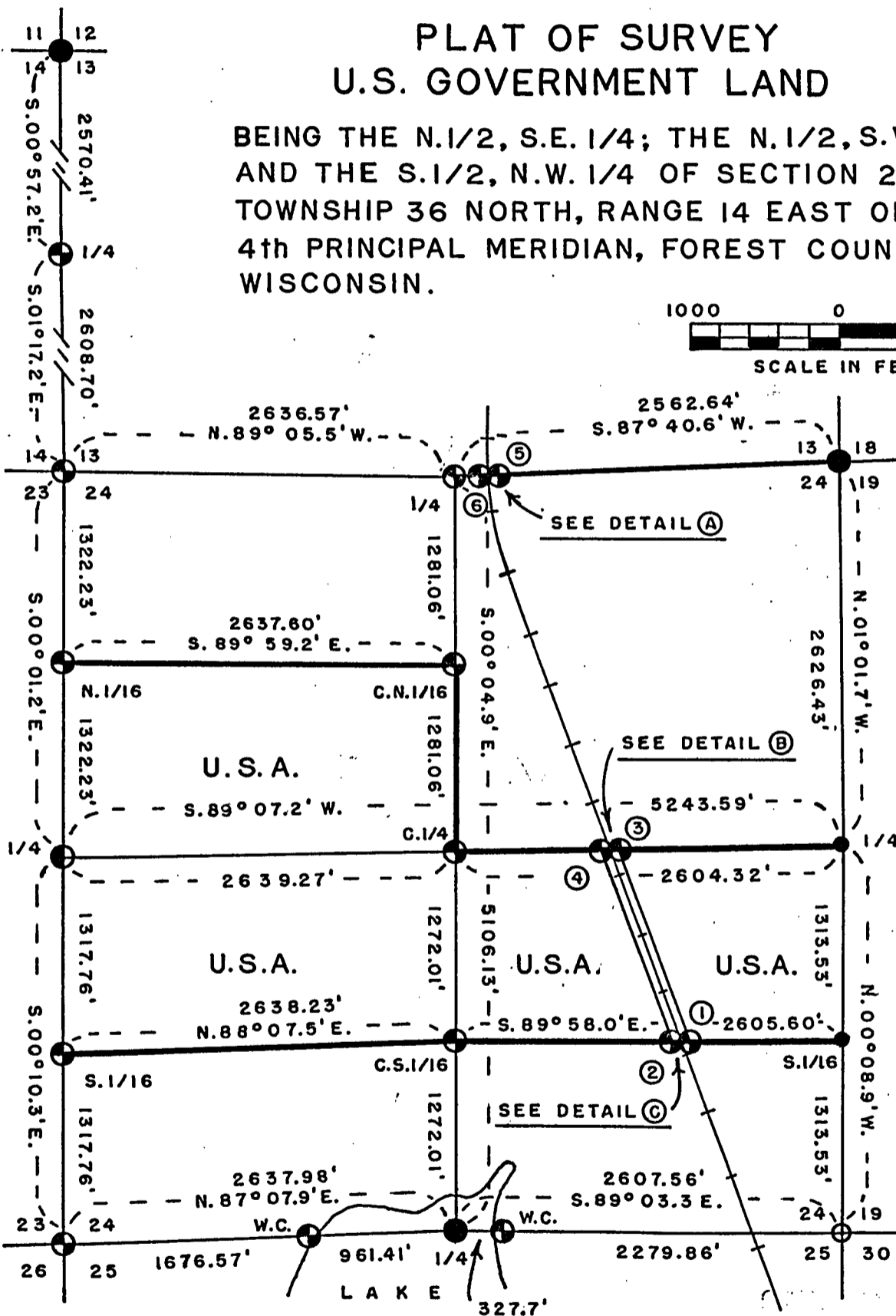


# PLAT OF SURVEY U.S. GOVERNMENT LAND

BEING THE N.1/2, S.E. 1/4; THE N.1/2, S.W. 1/4;  
AND THE S.1/2, N.W. 1/4 OF SECTION 24,  
TOWNSHIP 36 NORTH, RANGE 14 EAST OF THE  
4th PRINCIPAL MERIDIAN, FOREST COUNTY,  
WISCONSIN.



**LEGEND**

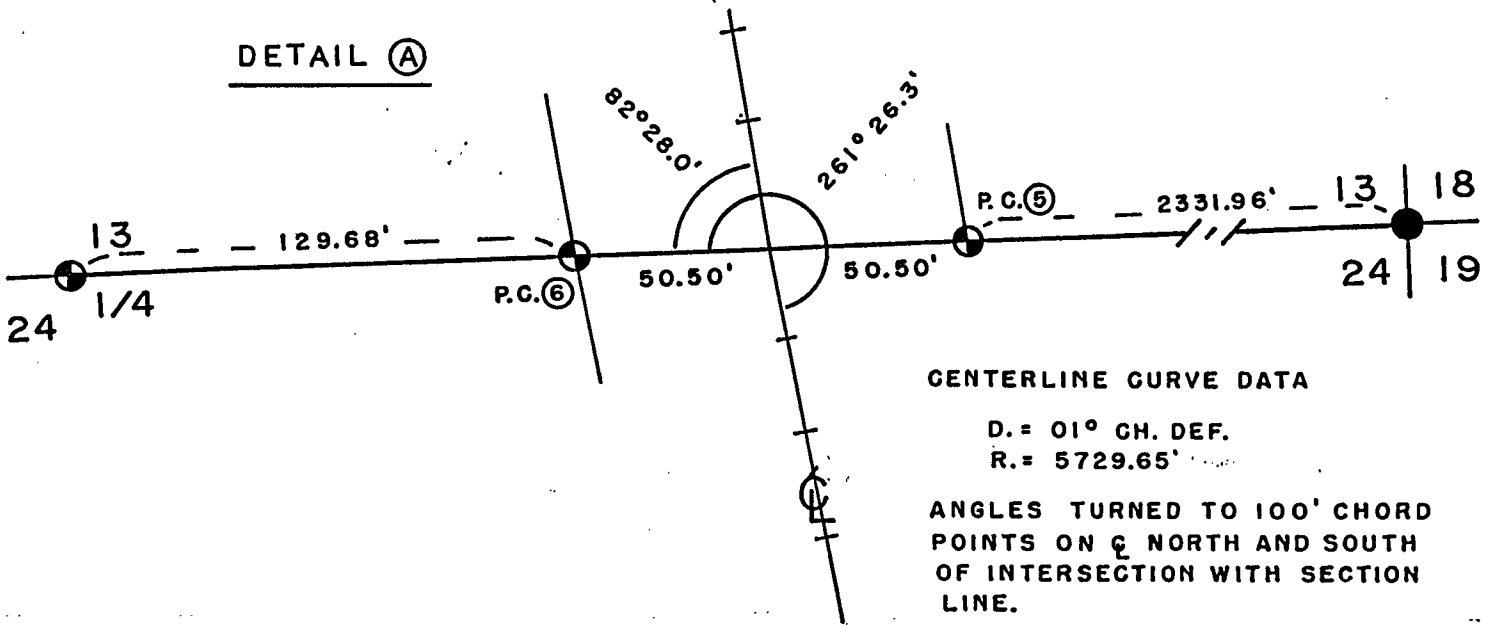
- MARKED BOUNDARY LINE OF U.S. GOVERNMENT LAND
- ⊕ 2" ALUMINUM MONUMENT 36" LONG
- ⊙ 2" ALUMINUM MONUMENT 60" LONG
- 3/4" IRON PIN 18" LONG
- R. R. SPIKE
- MONUMENT FOUND AND USED

FOREST CO SURVEYOR  
FILE # 361424-19860922  
DATE \_\_\_\_\_ BY \_\_\_\_\_

CONVERSION FACTORS:  
FEET TO METERS-0.304801  
METERS TO FEET-3.28033

MONUMENTATION OF RAILROAD RIGHT OF WAY LINES

DETAIL (A)

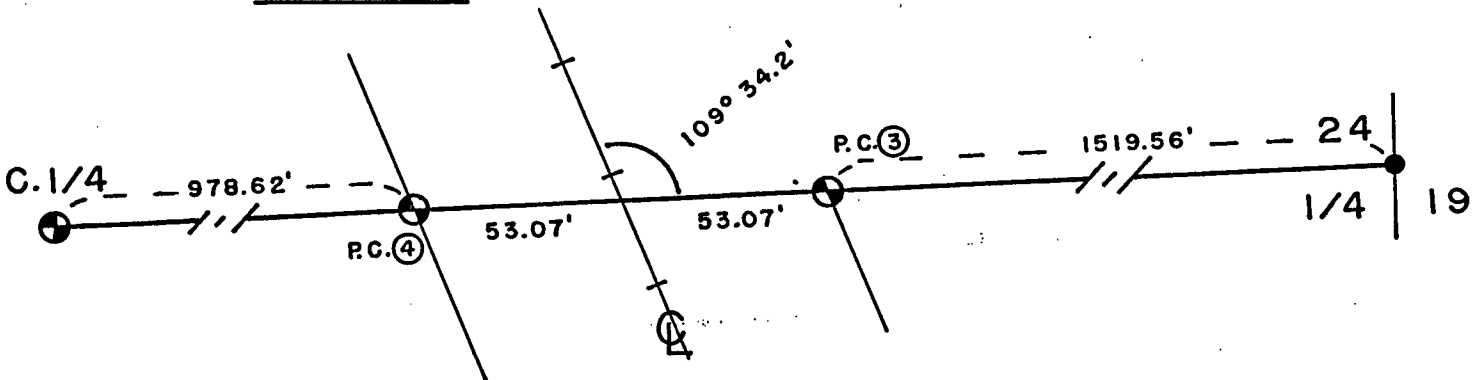


CENTERLINE CURVE DATA

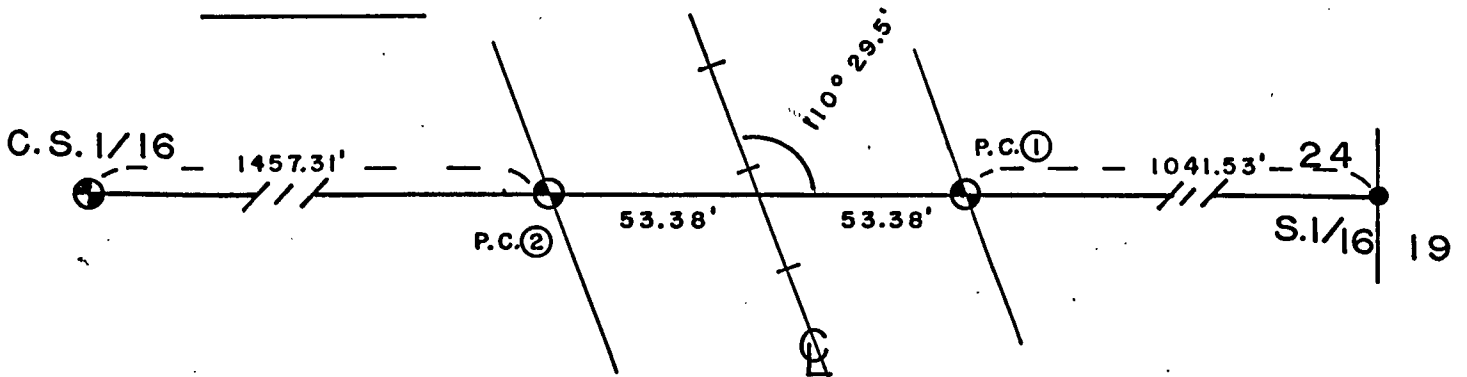
D. = 01° CH. DEF.  
 R. = 5729.65'

ANGLES TURNED TO 100' CHORD  
 POINTS ON  $\hat{C}$  NORTH AND SOUTH  
 OF INTERSECTION WITH SECTION  
 LINE.

DETAIL (B)



DETAIL (C)



Stock No. 26273

SHEET 3 OF 7SURVEY NOTES

This survey was made by James J. Fronsoe R.L.S. of Amberg, WI on behalf of the U.S. Department of Agriculture, Forest Service, for the purpose of restoring and establishing corners on the perimeter of Section 24, for establishing subdivisional corners within Section 24 and for locating and marking the boundaries of U.S. Government land on their perimeter and within Section 24, Township 36 North, Range 14 East of the 4th Principal Meridian, Forest County, Wisconsin.

The U.S. Government lands in this section were acquired in 1935.

The original government subdivision of this township was made in 1859.

The corner positions recovered, restored and established by this survey are marked by the monument described in the map legend.

The corner positions established were located to an accuracy of 1 part in 3000.

The bearings between corner positions are true bearings as determined by solar observations.

The field notes of this survey and a copy of this plat are on file in the Forest Supervisor's Office at Rhinelander, Wisconsin.

CORNERS RECOVERED AND/OR RESTORED1. Section Corner to Sections 13,24,18 and 19, T.36 N.,R.14 and 15 E.

Corner position found marked by an 8" diameter round concrete monument with a 4" diameter brass cap, set by the Wisconsin D.O.T.

Corner References:

B.T. Maple	10"	S.79 W.	208.9'
B.T. Maple	8"	N.80 W.	207.3'
B.T. Maple	10"	S.63 W.	225.7'
Conc. Witness Monument w/brass cap		EAST	192.6'

2. Quarter Corner to Section 24, T.36 N.,R.14 E. & Section 19, T.36 N.,R.15 E.

Corner position recovered in center of old N.-S. highway "8", 100.0' west from ancient fence corner and a found 1 1/2" iron pipe witness corner.

Corner References:

B.T. W.Birch	8"	N.77 E.	54.7'
B.T. Maple	4"	S.87 E.	45.0'
B.T. Balsam	6"	S.40 E.	65.4'
W.C. 2" Aluminum Pipe 36" long		S.87-07.2 W.	40.0'

Stock No. 26273

SHEET 4 OF 7

3. Section Corner to Sections 19,24,25 and 30, T.36 N.,R.14 and 15 E.

Corner position recovered in center of old E.-W. road 606' East of existing centerline of railroad. Corner located in approximate center of road intersection.

## Corner References:

W.C. 2" Aluminum Pipe 36" long	N.00-08.9 W.	33.00'
N.W. Corner of House Foundation	S.48 E.	123.7'
N.E. Corner of House Foundation	S.63 W.	98.3'
1 1/4" Iron Pipe	S.73 E.	74.1'

4. Quarter Corner to Sections 24 and 25, T.36 N.,R.14 E.

Corner position found marked by a 1 1/4" iron pipe in 4' of water in lake; found both original B.T. stumps which measure well from this monument:

Set W.C.s on section line both east and west of lake as follows:

W.C. EAST, 2" Aluminum Pipe 36" long, bears S.89-03.3 E. 327.7' from true corner.

## References to W.C.;

B.T. Hemlock	10"	N.74 E.	18.1'
B.T. Cedar	5"	S.38 E.	14.5'
B.T. Cedar	5"	S.08 W.	19.25'
B.T. Cedar	7"	N.73 W.	10.55'
S.S.P.		EAST	1.3'

W.C. WEST, 2" Aluminum Pipe 36" long, bears S.87-07.9 W. 961.41' from true corner.

## References to W.C.;

B.T. Balsam	6"	N.74 E.	11.65'
B.T. Hemlock	20"	SOUTH	12.7'
B.T. Maple	10"	S.30 W.	18.1'
B.T. Maple	8"	S.73 W.	4.4'
S.S.P.		EAST	1.3'

5. Section Corner to Sections 23,24,25 and 26, T.36 N.,R.14 E.

Corner position found marked by a 1 1/4" rd. iron pin set in ancient stake hole; found stump holes of original B.T.s as follows; Stp. Hole 1 1/2' S.55 E.19.5', Stp. Hole 1' S.23 W. 22', Stp. Hole 2' N.28 W. 21'.

## References to Corner;

B.T. Maple	12"	N.17 E.	38.25'
B.T. Cherry	9"	S.75 E.	37.25'
B.T. Maple	8"	S.31 W.	23.1'
B.T. Maple	7"	N.36 W.	18.05'
S.S.P.		SOUTH	1.6'

6. Quarter Corner to Sections 23 and 24, T.36 N.,R.14 E.

Corner position recovered from the remains of the original B.T. stumps.

## Corner References;

B.T. Spruce	4"	N.12 E.	65.3'
B.T. Spruce	4"	N.48 E.	42.8'
B.T. Spruce	4"	S.72 W.	54.5'
B.T. Spruce	6"	N.73 W.	84.9'
S.S.P.		SOUTH	1.8'

7. Section Corner to Sections 13,14,23 and 24, T.36 N.,R.14 E.

Corner position found marked by an ancient, buried, fence corner post hole, the surrounding area is badly disturbed by grading and plowing, a search for the original B.T.s was fruitless.

## Corner References;

B.T. R.Pine	5"	N.22 E.	61.5'
B.T. R.Pine	6"	N.71 E.	73.3'
B.T. Aspen	6"	S.61 E.	108.4'
B.T. Aspen	7"	S.04 E.	58.2'
S.S.P.		NORTH	0.7'

Stock No. 26273

SHEET 5 OF 7

8. Quarter Corner to Sections 13 and 24, T.36 N., R.14 E.

Corner position found marked by a small stake hole next to an ancient fence post hole in a very old E.-W. fence line.

Corner References;

B.T. Maple	5"	N.15 E.	4.3'
B.T. Maple (twin)	9"	S.68 E.	4.0'
B.T. Maple	8"	S.19 E.	18.3'
B.T. Maple	8"	S.85 W.	16.4'
S.S.P.		EAST	1.0'

9. Quarter Corner to Sections 13 and 14, T.36 N., R.14 E.

Corner position found marked by an ancient stake hole in a ring of stones; found a 1 1/2" iron pipe lying down next to stake hole; found remains of original B.T.s as follows; Stp. Hole 2' S.30 E. 24.4', Stp. Hole 3' N.44 W. 9'.

Corner References;

B.T. Maple	11"	NORTH	38.3'
B.T. Maple	12"	S.25 W.	35.2'
B.T. Maple	12"	S.71 W.	39.55'
B.T. Maple	6"	N.55 W.	37.5'
S.S.P.		WEST	1.2'

10. Section Corner to Sections 11, 12, 13, and 14, T.36 N., R.14 E.

Corner position found marked by a 2" iron pipe with cap; found a 1" iron pipe driven 0.2' N.W. of 2" pipe; found very old 3" sq. cedar stake leaning against a tree; found the remains of 3 of the original B.T.s as follows; Hem. Stp. Hole 3' N.70 W. 5.5', Hem. Stp. Hole 2' N.45 E. 15.4', Rotted Cedar Stp. 18" S.20 E. 26.5'.

Corner References, drove 60d spikes in existing B.T.s as follows;

Cedar	7"	N.22 E.	5.9'
Hemlock	14"	S.64 E.	20.9'
Hemlock	18"	S.35 E.	7.7'
Cedar	7"	S.47 W.	30.05'
Cedar	6"	N.45 W.	62.4'

CORNERS ESTABLISHED1. S.1/16 Corner to Sections 24 and 19, T.36 N., R.14 and 15 E.

Corner established at midpoint on line between the east 1/4 corner and the southeast corner of section 24.

Corner References;

W.C. 2" Aluminum Pipe 36" long		N.89-58.0 W.	76.0'
B.T. Balsam	4"	N.34 E.	127.2'
B.T. Aspen	6"	N.75 E.	105.5'
B.T. Aspen	10"	N.52 W.	146.6'

2. S.1/16 Corner to Sections 23 and 24, T.36 N., R.14 E.

Corner established at midpoint on line between the west 1/4 corner and the southwest corner of section 24.

Corner References;

B.T. Maple	8"	N.63 E.	9.7'
B.T. Maple	7"	S.47 W.	20.5'
B.T. Maple	10"	N.34 W.	22.6'
S.S.P.		WEST	1.1'

3. N.1/16 Corner to Sections 23 and 24, T.36 N., R.14 E.

Corner established at midpoint on line between the west 1/4 corner and the northwest corner of section 24.

Corner References;

B.T. Maple	8"	N.40 E.	20.65'
B.T. Basswood	9"	S.84 E.	24.95'
B.T. Maple	5"	S.23 E.	36.1'
S.S.P.		WEST	1.0'

Stock No. 26273

SHEET 6 OF 74. Center N.1/16 Corner to Section 24, T.36 N.,R.14 E.

Corner established at midpoint on line between the center 1/4 corner and the north 1/4 corner of section 24.

Corner References;

B.T. W.Pine	5"	N.60 E.	70.25'
B.T. Tamarack	6"	S.02 W.	59.9'
B.T. W.Pine	4"	S.52 W.	105.7'
S.S.P.		SOUTH	0.8'

5. Center 1/4 Corner to Section 24, T.36 N.,R.14 E.

Corner established at intersection of N.-S. and E.-W. 1/4 lines of section 24.

Corner References;

B.T. Maple	5"	N.81 E.	9.85'
B.T. Maple	4"	S.40 E.	23.6'
B.T. Maple	9"	S.16 W.	28.7'
B.T. Maple	9"	N.61 W.	18.65'
S.S.P.		EAST	1.9'

6. Center S.1/16 Corner to Section 24, T.36 N.,R.14 E.

Corner established at midpoint on line between the center 1/4 corner and the south 1/4 corner of section 24.

Corner References;

B.T. Balsam	5"	N.53 E.	18.15'
B.T. Balsam	6"	S.72 E.	33.5'
B.T. Balsam	6"	S.25 E.	18.35'
S.S.P.		EAST	1.4'

7. Property Corner #1 in Section 24, T.36 N.,R.14 E.

Corner established at intersection of easterly Right-of-Way line of railroad and the E.-W. 1/8 line through the S.E.1/4 of Section 24.

Corner References;

B.T. Cedar	6"	S.71 E.	10.6'
B.T. Tamarack	9"	S.24 E.	8.8'
B.T. Cedar	7"	N.15 W.	6.3'
S.S.P.		EAST	1.5'

8. Property Corner #2 in Section 24, T.36 N.,R.14 E.

Corner established at intersection of westerly Right-of-Way line of railroad and the E.-W. 1/8 line through the S.E.1/4 of Section 24.

Corner References;

B.T. Balsam	9"	S.30 E.	5.3'
B.T. Cedar	5"	N.72 W.	14.1'
B.T. Cedar	8"	N.41 W.	5.9'
S.S.P.		WEST	1.2'

9. Property Corner #3 in Section 24, T.36 N.,R.14 E.

Corner established at intersection of easterly Right-of-Way line of railroad and the E.-W. 1/4 line through section 24.

Corner References;

B.T. W.Birch	9"	N.85 E.	18.0'
B.T. Balsam	7"	N.31 E.	10.1'
B.T. Cedar	4"	S.09 W.	23.05'
S.S.P.		EAST	1.1'

10. Property Corner #4 in Section 24, T.36 N.,R.14 E.

Corner established at intersection of westerly Right-of-Way line of railroad and the E.-W. 1/4 line through section 24.

Corner References;

B.T. Cedar	5"	S.18 E.	20.5'
B.T. W.Birch	10"	S.35 W.	6.8'
B.T. Cedar	10"	N.62 W.	10.95'
S.S.P.		WEST	2.1'

Stock No. 26273

SHEET 7 OF 711. Property Corner #5 to Sections 13 and 24, T.36 N., R.14 E.

Corner established at intersection of easterly Right-of-Way line of railroad and the section line between the north 1/4 corner and the northeast corner of section 24.

## Corner References;

B.T. Maple	8"	N.04 E.	22.6'
B.T. Maple	8"	N.59 E.	23.85'
B.T. Y. Birch	7"	S.22 E.	19.15'
S.S.P.		EAST	2.0'

12. Property Corner #6 to Sections 13 and 24, T.36 N., R.14 E.

Corner established at intersection of westerly Right-of-Way line of railroad and the section line between the north 1/4 corner and the northeast corner of section 24.

## Corner References;

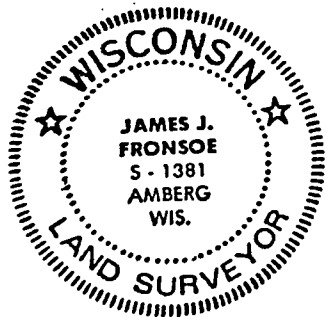
B.T. Aspen	4"	N.75 E.	24.65'
B.T. W. Birch	12"	S.25 E.	17.5'
B.T. Maple	7"	N.06 W.	17.8'
S.S.P.		WEST	0.9'

SURVEYOR'S AFFIDAVIT

State of Wisconsin : ss  
County of Forest

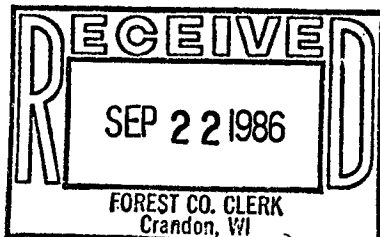
I, James J. Fronsoe, a registered land surveyor in the State of Wisconsin, do hereby certify; that I have surveyed and subdivided Section 24, T.36 N., R.14 E. of the 4th Principal Meridian, State of Wisconsin.

The plat map and the notes herewith are a correct representation of the land surveyed and divided. I have surveyed and subdivided said section in accordance with the rules for the survey of the public lands and the statutes of the State of Wisconsin.



*James J. Fronsoe*  
R.L.S. State of Wisconsin  
Registration # S- 1381  
Dated; August, 1986

Plat Approved *Dora C. James*  
District Ranger



*Dora C. James*