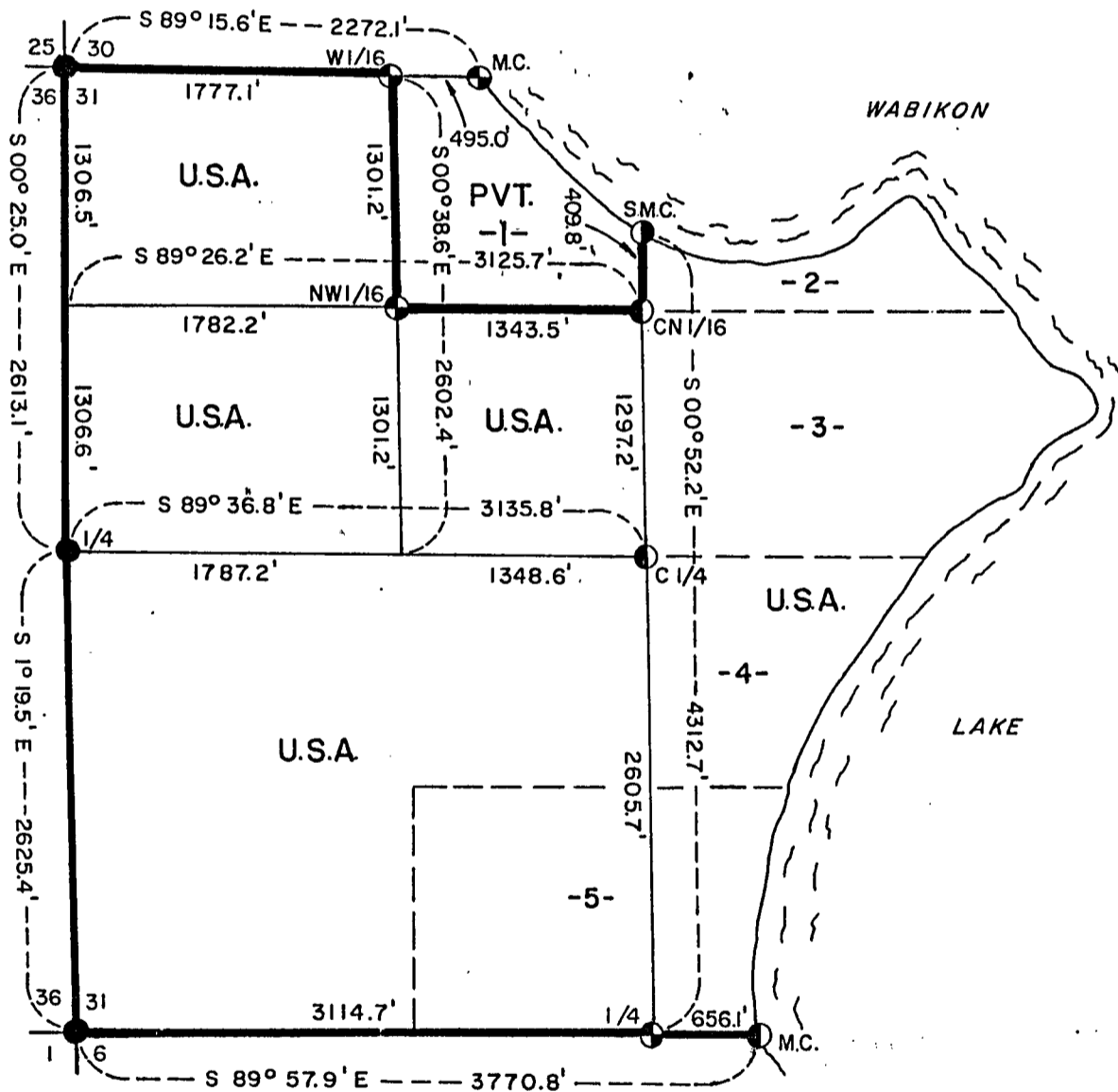
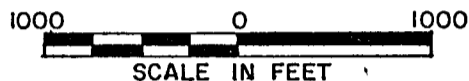


# PLAT OF SURVEY U.S. GOVERNMENT LAND

Being the Governments Lots 2-3-4-5; SW1/4; the W1/2, NW1/4  
and the SE1/4, NW1/4 of Section 31  
Township 36 North, Range 14 East, Fourth Principal Meridian  
FOREST COUNTY, WISCONSIN



## LEGEND

- 2"x 60" Iron Pipe with Brass Cap, Forest Co. Monument.
- ⊕ 2" Diameter Aluminum Monument, 36" Long.
- ⊙ 2" Diameter Aluminum Monument, 60" Long.
- ⊖ 2" Diameter Aluminum Monument, 120" Long.

— Marked Boundary Lines of U.S. Government Lands.

FOREST CO SURVEYOR  
FILE # 361431 - 19850401  
DATE \_\_\_\_\_ BY \_\_\_\_\_

Conversion Factors:  
Feet to Meters - 0.304801  
Meters to Feet - 3.280833

Stock No. 26273

Sheet 2 of 4

SURVEY NOTES

This survey was made by the U. S. Department of Agriculture, Forest Service, for the purpose of restoring and establishing corners on the perimeter of Section 31, for establishing subdivisional corners within Section 31, and for locating and marking the boundaries of U. S. Government lands on their perimeter and within Section 31, Township 36 North, Range 14 East, Fourth Principal Meridian, Forest County, Wisconsin.

The U. S. Government lands in this section were acquired in 1935. An error in the original meander line along the shore of Wabikon Lake is recognized. An additional 70 acres is noted in Government Lots 2, 3, and 4 and is claimed to be lands of the United States, administered by the Forest Service.

The original Government subdivision survey of this township was made in 1858 and 1859.

The corner positions recovered, restored, and established by this survey are marked by the monument described in the map legend.

The corner positions established were located to an accuracy of one part in 3000.

The bearings between corner positions are true bearings as determined by solar observations.

The field notes of this survey and a copy of this plat are on file in the Forest Supervisor's Office at Rhinelander, Wisconsin.

CORNERS RECOVERED AND RESTORED1. Section Corner to Sections 30-31-25-36, T.36N., R.13-14E.

Forest County monument set in 1938 by C. E. Walker. Certificate by Thomas Arnott--Document Number 108379--1975.

Corner References:

Sugar	5"	N.33°E.	33.60 feet
Sugar	6"	S.43°E.	48.22 feet
Sugar	6"	S.8°W.	18.33 feet
Sugar	8"	N.16°W.	45.83 feet
Steel Sign Post		South	2.20 feet

2. Section Corner to Sections 31-36-6-1, T.35-36N., R.13-14E.

Forest County monument set in 1938 by C. E. Walker.

Corner References:

Sugar	8"	N.47°E.	25.60 feet
Sugar	8"	S.31°E.	32.70 feet
Sugar	8"	S.50°W.	50.25 feet
Sugar	7"	N.52°W.	56.70 feet
Steel Sign Post		North	2.05 feet

3. Meander Corner to Sections 31-6, T.35-36N., R.14E.

Corner position found marked by scribed wood post and original and local BTs.

Corner References:

Cedar	7"	N.52°E.	19.10 feet
Cedar	8"	S.89°E.	4.10 feet
Cedar	12"	S.71°W.	7.87 feet
Cedar Stump Scribed		S.72°W.	16.60 feet
"MC Sec. 6 BT"			
Steel Sign Post		West	1.30 feet

Stock No. 26273

Sheet 3 of 4

4. Meander Corner to Sections 30-31, T.36N., R.14E.

Corner position found marked by 2" iron pipe and fallen squared wood post and local BTs.

Corner References:

Cedar	12"	S.14°E.	24.99 feet
Black Ash	5"	S.40°W.	16.12 feet
Cedar	4"	N.1°E.	11.41 feet
Steel Sign Post		East	2.10 feet

5. Quarter Corner to Sections 31-36, T.36N., R.13-14E.

Forest County monument set in 1938 by C. E. Walker.

Corner References:

Sugar	5"	S.46°E.	20.21 feet
Sugar	6"	S.22°E.	14.89 feet
Sugar	6"	S.54°W.	17.25 feet
Sugar	6"	N.68°W.	30.90 feet
Steel Sign Post		South	1.30 feet

6. Quarter Corner to Sections 31-6, T.35-36N., R.14E.

Corner position restored by single proportion between the southwest section corner and the meander corner on the south line of Section 31.

Corner References:

Black Ash	2"	S.85°E.	7.42 feet
Black Ash	6"	S.49°W.	26.10 feet
Black Ash	3"	N.32°W.	4.10 feet
Steel Sign Post		West	1.40 feet

CORNERS ESTABLISHED1. Center Quarter Corner to Section 31, T.36N., R.14E.

Corner position established at the intersection of the one-quarter lines. One-quarter lines are by mean bearing of east and west section lines and the north and south halves of the west section line.

Corner References:

White Birch	8"	N.12°E.	14.50 feet
Black Spruce	4"	S.84°E.	14.42 feet
Cedar	12"	N.88°W.	31.91 feet
Steel Sign Post		Northwest	2.30 feet

2. West One-Sixteenth Corner to Sections 30-31, T.36N., R.14E.

Corner position established at the intersection of the west one-sixteenth line and north side of Section 31.

Corner References:

White Ash	8"	N.68°E.	43.10 feet
Sugar	13"	S.40°W.	46.01 feet
Sugar	8"	N.56°W.	32.75 feet
Steel Sign Post		South	1.40 feet
Steel Sign Post		West	1.50 feet

3. Center North One-Sixteenth Corner to Section 31, T.36N., R.14E.

Corner position established at the intersection of the north-south one-quarter line and the north one-sixteenth line of Section 31.

Corner References:

Cedar	8"	N.42°E.	24.71 feet
Cedar	6"	S.78°E.	16.03 feet
Cedar	12"	N.83°W.	17.63 feet
Steel Sign Post		North	1.80 feet

Stock No. 26273

Sheet 4 of 4

4. Northwest One-Sixteenth Corner to Section 31, T.36N., R.14E.

Corner position established at the intersection of the north and west one-sixteenth lines of Section 31.

Corner References:

Black Ash	5"	N.64°E.	8.66 feet
Cedar	7"	S.9°E.	5.72 feet
Cedar	9"	S.82°W.	16.04 feet
Steel Sign Post		North	1.50 feet

5. Special Meander Corner South Shore of Lake--Section 31, T.36N., R.14E.

Corner position established at the intersection of north-south quarter line and the south shore of Wabikon Lake in Section 31.

Corner References:

Black Ash	10"	N.79°E.	48.69 feet
White Birch	8"	S.4°E.	25.92 feet
Black Ash	5"	S.50°W.	46.70 feet
Steel Sign Post		South	1.80 feet

SURVEYOR'S AFFIDAVIT

State of Wisconsin ]  
County of Forest ] SS

I, Milo E. Stefan, Cadastral Surveyor, U. S. Forest Service, and a registered surveyor in the State of Wisconsin, hereby certify that I have surveyed and subdivided Section 31, Township 36 North, Range 14 East, Fourth Principal Meridian, State of Wisconsin.

The plat map and the notes herewith are a correct representation of the land surveyed and divided. I have surveyed and subdivided said section in accordance with the rules for survey of the public lands and with the statutes of the State of Wisconsin.

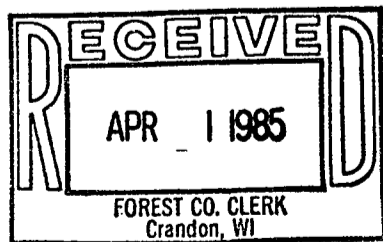


*Milo E. Stefan*  
Cadastral Surveyor, U. S. Forest Service  
R.L.S., State of Wisconsin  
Certificate S-1558

Plat Ready For Filing

*Dale R. Staeger*  
District Ranger

Date of Survey: 1983



*Dora C. James*  
Forest Co. Clerk