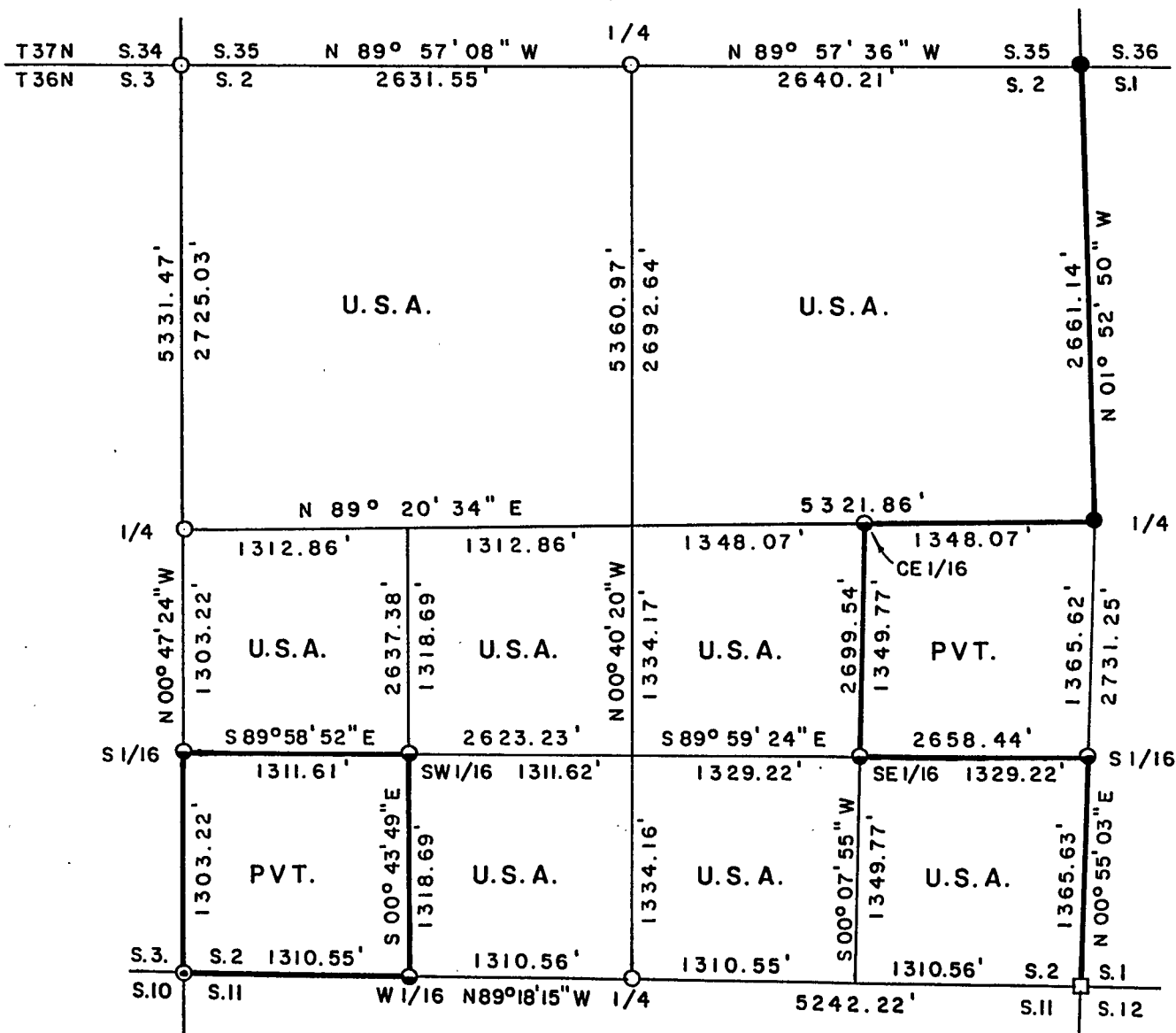


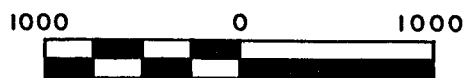
Stock No. 26273

PLAT OF SURVEY FOR CERTIFIED LAND CORNER
RESTORATION AND ESTABLISHMENT
BEING THE CORNERS FOR THE NW1/4, NE1/4, SE1/2-SE1/4, NW1/4-SE1/4,
NW1/2-SW1/4, AND SE1/4-SW1/4 OF SECTION 2, T.36N. R.15E., 4TH PRINCIPAL MERIDIAN
COUNTY OF FOREST, STATE OF WISCONSIN

Sheet 1 of 6



SCALE 1" = 1000'



Scale in feet

LEGEND

- 2½ inch diameter aluminum pipe monument with an aluminum cap, Forest County
- 2 inch diameter aluminum pipe monument with an aluminum cap set by U.S.F.S.
- 2½ inch diameter aluminum pipe monument, 36 inches long with an aluminum cap
- ⊙ 2½ inch diameter aluminum pipe monument, 60 inches long with an aluminum cap
- 1 inch diameter aluminum pipe monument, 36 inches long with an aluminum cap

— Boundary line marked to Forest Service standards

Stock No. 26273

Sheet 2 of 6

SURVEY NOTES

This survey was made by Gary L. Pisoni, a Registered Land Surveyor in the State of Wisconsin, for the U.S.D.A., Forest Service, for the purpose of recovering, restoring, establishing, marking, and perpetuating the corners and boundary lines of U.S. Government Land on the perimeter and within Section 2, Township 36 North, Range 15 East, Fourth Principal Meridian, Forest County, State of Wisconsin, as shown on the plat map herewith.

The Original Government Township Lines was done by Artemas Curtis, U.S. Deputy Surveyor in September of 1857. The original Government Sub-division of this township was done by James McBride, U.S. Deputy Surveyor in July of 1859.

The bearings between corner positions are true bearings referenced to the North One-Half of the West section line of Section 10, as determined by a solar observation by Kim H. Pritzlaff of Aaron Associates from a Plat of Survey of 1985 of Section 9. All distances shown thereon are in feet and hundredths of feet. The control traverse was measured by use of an electronic distance measuring equipment.

The accuracy of this survey exceeds the State requirements of 1 in 3000.

The field notes and a copy of the Plat of Survey are on file in the Forest Supervisor's Office at Rhineland, Wisconsin.

CORNERS RECOVERED AND RESTORED1. Northeast Section Corner

In 1975, Philip Hansen, RLS restored the corner position from acceptance of a 4" x 4" cedar post. No evidence of original bearing trees found. Hansen set a 2 1/2" aluminum pipe monument with a stamped cap.

1975 Corner References:

White Birch	12"	S 26°W	66.1 links
White Birch	10"	S 24°E	28.7 links
White Spruce	8"	N 29°E	72.0 links

1994 Corner References:

White Birch (existing)	14"	S 26°W	44.00 feet
White Birch (")	12"	S 27°E	18.94 feet
White Spruce(")	9"	N 29°E	47.52 feet
Red Maple (new)	6"	N 36°W	37.53 feet
Steel Sign Post		West	1.00 feet

Stock No. 26273

Sheet 3 of 6

2. East Quarter Corner

In 1975, Philip Hansen, RLS restored the corner position from acceptance of a rock cairn around a hardwood stake, no original bearing tree evidence found from James McBride survey in 1859. Hansen set a 2 1/2" dia. aluminum pipe monument with stamped cap.

1975 Corner References:

Elm	16"	N 52°E	58.4 links
Sugar Maple	6"	N 33°W	67.5 links

1994 Corner References:

Sugar Maple(existing)	9"	N 34°W	44.55 feet
Sugar Maple	13"	N 76°E	70.05 feet
Sugar Maple	9"	S 28°E	72.23 feet
Sugar Maple	8"	S 38°W	60.54 feet
Steel Sign Post		N 85°W	0.90 feet

3. Southeast Section Corner

In 1981, Milo Stefan, RLS restored the corner position from acceptance of original bearing tree evidence.

1981 Corner References:

Red Maple	6"	N 66°E	15.45 feet
Hemlock	14"	S 51°E	10.66 feet
Sugar Maple	8"	S 19°W	26.40 feet
Sugar Maple	6"	N 06°W	26.40 feet
Steel Sign Post		South	1.50 feet

1994 Corner References:

Red Maple (exists)	7"	N 63°E	15.34 feet
Hemlock	Dead		
Sugar Maple(exists)	9"	S 20°W	26.30 feet
Sugar Maple(exists)	7"	N 11°W	26.51 feet
Sugar Maple (new)	10"	S 88°W	21.50 feet
Steel Sign Post		N 85°E	1.70 feet

4. South Quarter Corner between Sections 2 and 11

Corner position restored at midpoint and on line between the Southwest corner and Southeast corner of Section 2.

Corner References:

Red Maple	7"	S 59°E	5.82 feet
Red Maple	5"	S 05°E	11.50 feet
Hemlock	10"	S 38°W	41.43 feet
Hemlock	13"	N 22°W	14.43 feet
Steel Sign Post		S 85°W	1.10 feet

5. Southwest Section Corner

Corner position restored by double proportionate measurment methods between the Northwest Section corner of Section 10 and the Southeast Section corner of Section 2 and between the Northwest corner of Section 2 and the East Quarter corner of Section 10.

Corner References:

Steel Sign Post	North	1.35 feet
Steel Sign Post	South	1.13 feet
Steel Sign Post	East	1.30 feet

Stock No. 26273

Sheet 4 of 6

6. West Quarter Corner

Corner position restored at midpoint and on line between the Northwest section corner and Southwest Section corner of Section 2.

Corner References:

Sugar Maple	12"	S 53°E	3.90 feet
White Spruce	15"	S 60°W	39.21 feet
Red Pine	14"	N 83°W	19.30 feet
Red Pine	12"	N 34°W	10.61 feet
Steel Sign Post		N 58°E	0.95 feet

7. Northwest Section Corner

Corner position restored by single proportionate measurement methods between the North Quarter corner of Section 3 and the North quarter corner of Section 2.

Corner References:

Black Spruce	12"	N 01°E	57.03 feet
Red Pine	10"	S 73°E	53.63 feet
Red Pine	11"	S 37°E	25.74 feet
Red Pine	12"	S 32°W	60.94 feet
Steel Sign Post		West	0.88 feet

8. North Quarter Corner

Corner position restored from the found remains of a white pine bearing tree stump. No evidence of Aspen B.T. found.

Corner References:

Black Spruce	8"	N 46°E	6.22 feet
Sugar Maple	14"	S 43°E	26.55 feet
White Birch	9"	S 61°W	14.61 feet
Red Maple	6"	N 27°W	26.04 feet
Steel Sign Post		South	1.00 feet

CORNERS ESTABLISHED1. South Sixteenth Corner between Sections 1 and 2.

Corner position established at midpoint and on line between the Southeast Section corner and East Quarter corner of Section 2.

Corner References:

Sugar Maple	11"	N 45°E	17.50 feet
Sugar Maple	11"	N 46°W	17.35 feet
Steel Sign Post		N 04°W	1.22 feet

2. Southeast Sixteenth Corner

Corner position established at the intersection of straight lines between opposing sixteenth corner positions on the perimeter of the Southeast quarter of Section 2.

Corner References:

Basswood (Dbl.)	8"	N 24°E	13.20 feet
Red Maple (Dbl.)	5"	N 81°W	14.97 feet
Steel Sign Post		S 37°W	1.33 feet



Stock No. 26273

Sheet 5 of 6

3. Center East Sixteenth Corner

Corner position established at midpoint and on line between the East quarter corner and the Center quarter corner.

Corner References:

Ash	6"	N 07°W	26.60 feet
Hemlock	13"	S 74°E	27.98 feet
Steel Sign Post		S 62°W	1.15 feet

4. South Sixteenth Corner between Sections 2 and 3

Corner position established at midpoint and on line between the Southwest corner and West quarter corner of Section 2.

NOTE: Corner falls in West lane of Browns Road.

Corner References:

Red Pine	18"	N 12°E	51.55 feet
Red Pine	13"	N 83°W	23.49 feet
Witness Corner	1" x 36"	S89°58'52"E	32.71 feet
	Al. Mon.		
Steel Sign Post		S89°58'52"E	33.20 feet

5. Southwest Sixteenth Corner

Corner position established at the intersection of straight lines between opposing sixteenth corner positions on the perimeter of the Southwest quarter of Section 2.

Corner References:

Sugar Maple	5"	S 88°E	16.93 feet
Black Cherry(dbl)	6"	S 24°E	11.95 feet
Steel sign post		N 40°W	1.30 feet

6. West Sixteenth Corner between Sections 2 and 11.

Corner position established at midpoint and on line between the Southwest corner and the South quarter corner of Section 2.

Corner References:

Black Spruce	7"	N 79°E	3.22 feet
Red Maple	5"	N 49°W	16.40 feet
Steel sign post		S 72°W	1.27 feet

Stock No. 26273

Sheet 6 of 6

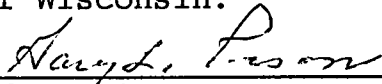
SURVEYOR'S CERTIFICATE

State of Wisconsin)ss
County of Forest)

I, Gary L. Pisoni, a Cadastral Surveyor, and a Registered Land Surveyor in the State of Wisconsin, hereby certify that I have surveyed and sub-divided Section 2, Township 36 North, Range 15 East, Fourth Principal Meridian, State of Wisconsin.

The plat map and survey notes herewith are a correct representation of the land surveyed and divided. I have surveyed and sub-divided said section in accordance with the rules for the survey of public lands and with the statutes of the State of Wisconsin.

Date of Survey: 1994


Cadastral Surveyor
R.L.S. State of Wisconsin
Certificate S-1634

