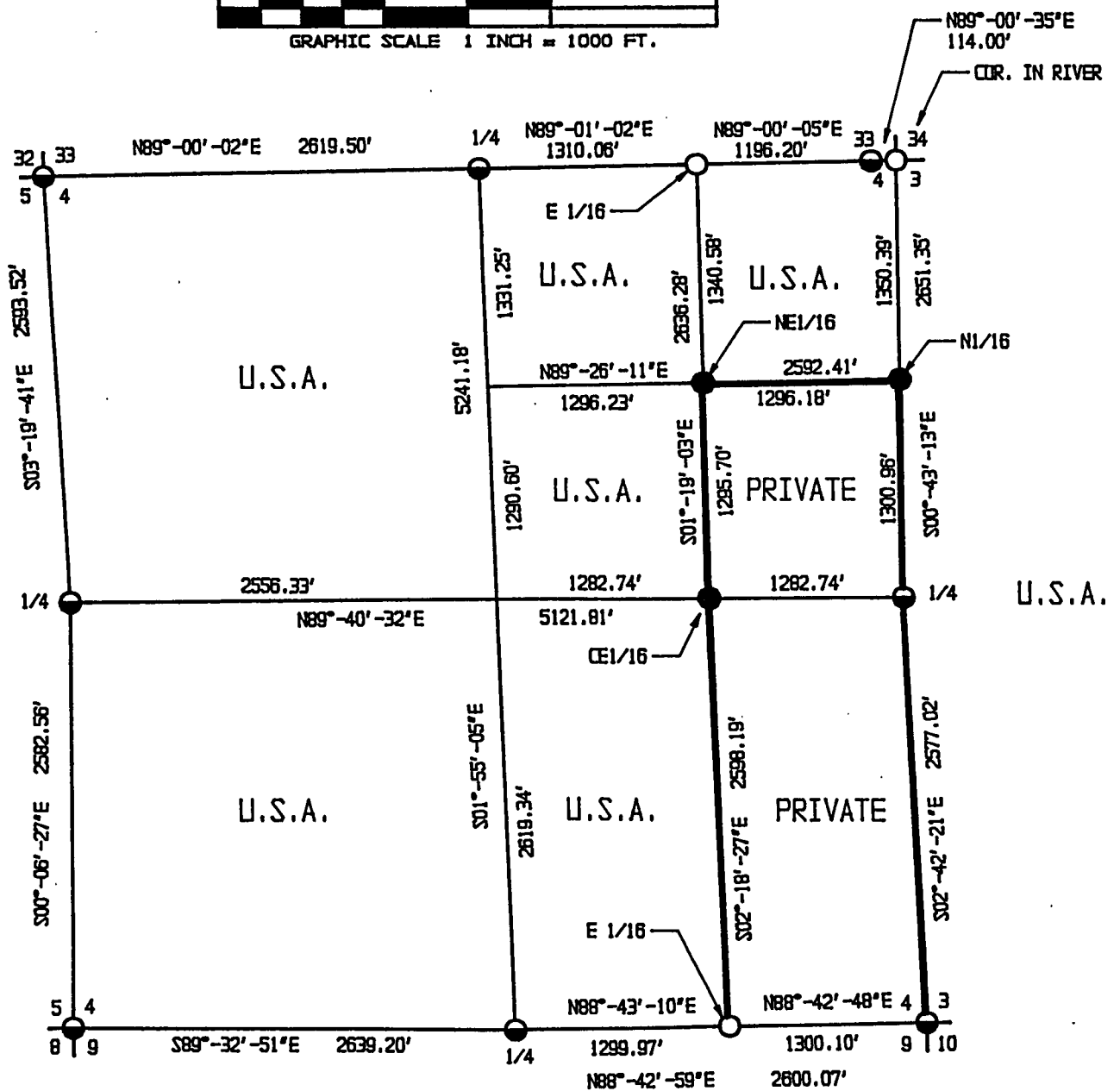
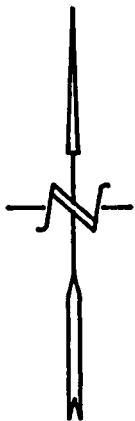
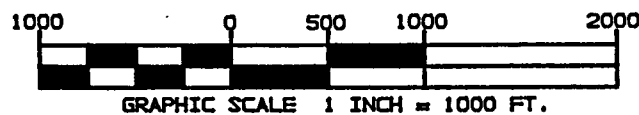


PLAT OF SURVEY

SHEET 1 OF 4

U.S. GOVERNMENT LAND
BEING ALL OF SECTION 4 EXCEPT
THE SE1/4 OF NE1/4 AND THE E1/2 OF SE1/4
TOWNSHIP 36 NORTH, RANGE 15 EAST
FOURTH PRINCIPAL MERIDIAN
FOREST COUNTY, WISCONSIN



LEGEND

- 1" X 36" ALUMINUM CAPPED MONUMENT - SET THIS SURVEY.
- FOUND ALUMINUM CAPPED PIPE.
- FOUND ALLOY CAPPED PIPE.

— BOUNDARY LINE SET TO FOREST SERVICE STANDARDS.

SECTION 4, T36N-R15E
SURVEY NOTES

This survey was made by Coleman Engineering Company for the U.S. Department of Agriculture-Forest Service under Contract No. 53-56A6-4-00936, Order No. 43-56A6-5-0030 for the purpose of restoring and establishing corners on the perimeter of Section 4, for establishing subdivisonal corners within Section 4, and for locating and marking the boundaries of U.S. Government lands along the perimeter and within Section 4, Township 36 North, Range 15 East, Fourth Principal Meridian, Forest County, State of Wisconsin.

The survey is based on U.S.D.A., U.S. Forest Service GPS survey control completed in 1994 and the resulting sectional subdivision therefrom.

The original township line survey was completed by Artemas Curtis in 1857. The township subdivision survey was completed by James McBride in 1859.

The corner positions recovered, restored and established by this survey are marked by the monument described in the map legend.

The corner positions established were located to a minimum accuracy of 1 part in 5000.

The field notes of this survey and a copy of this plat are on file in the Forest Supervisor's office in Rhinelander, Wisconsin.

Conversions between grid bearings and true bearings are performed by use of the following algebraic formula: true bearing - convergence angle = grid bearing. (close attention to the algebraic sign must be observed, ie: \pm of the convergence angle.)

Distances shown are Wisconsin north zone state plane grid distances. Conversion to surface distance is performed by the formula:

$$\left[\frac{\text{Grid Distance}}{\left(\text{Grid Scale Factor} \times \frac{20,906,000}{20,906,000 + \text{Mean Elev.}} \right)} \right] = \text{Surface Distance}$$

Wisconsin north zone coordinates were computed by USDA - U.S. Forest Service and are based on the 1983 North American Datum.

COORDINATE VALUES ON 1983 NAD

<u>Corner Code</u>	<u>North Latitude</u>	<u>West Longitude</u>	<u>State Plane Coordinates</u>		<u>Convergence Angle</u>	<u>Scale Factor</u>
			<u>North</u>	<u>East</u>		
NW	45°-38'-10.68"	88°-38'-02.87"	174253.266	2317873.654	00°-59'-07.07"	0.999988088
N 1/4	45°-38'-10.68"	88°-37'-26.01"	174298.959	2320492.755	00°-59'-53.67"	0.999988088
E 1/16	45°-38'-10.68"	88°-37'-07.57"	174321.430	2321802.618	00°-59'-46.97"	0.999988088
NE	45°-38'-10.69"	88°-36'-49.13"	174344.247	2323112.622	01°-00'-00.27"	0.999988088
N 1/16	45°-37'-57.35"	88°-36'-49.22"	172993.960	2323129.597	01°-00'-00.20"	0.999988685
NE 1/16	45°-37'-57.45"	88°-37'-07.46"	172981.208	2321833.477	00°-59'-47.04"	0.999988681
W 1/4	45°-37'-45.10"	88°-38'-01.38"	171664.115	2318024.222	00°-59'-08.15"	0.999988719
C-E 1/16	45°-37'-44.67"	88°-37'-07.36"	171685.845	2321863.232	00°-59'-47.12"	0.999989257
E 1/4	45°-37'-44.51"	88°-36'-49.31"	171693.106	2323145.950	01°-00'-00.13"	0.999989264
SW	45°-37'-19.60"	88°-38'-01.94"	169081.558	2318029.066	00°-59'-07.75"	0.999990397
S 1/4	45°-37'-18.95"	88°-37'-24.81"	169060.712	2320668.188	00°-59'-34.53"	0.999990427

Corner Code	North Latitude	West Longitude	State Plane Coordinates		Convergence Angle	Scale Factor
			North	East		
E 1/16	45°-37'-19.01"	88°-37'-06.52"	169089.765	2321967.835	00°-59'-47.72"	0.999990424
SE	45°-37'-19.08"	88°-36'-48.23"	169118.957	2323267.610	01°-00'-00.92"	0.999990421

CORNERS RECOVERED OR RESTORED

1. Section corner common to Sections 32 and 33, T37N-R15E and Sections 5 and 4, T36N-R15E. Corner position monumented by Milo Stefan, RLS, 1981. Certificate on file in Forest County, Document No. 131683.
2. Quarter corner common to Section 33, T37N-R15E and Section 4, T36N-R15E. Corner position monumented by Glen Barker, RLS, 1986. Certificate on file in Forest County, Document No. 131942.
3. East one-sixteenth common to Section 33, T37N-R15E and Section 4, T36N-R15E. Corner position monumented by Glen Barker, RLS, in 1986 and recovered by Alan Harrison, RLS, 1994. Certificate on file in Forest County, Document No. 152894.
4. Section corner common to Sections 33 and 34, T37N-R15E and Sections 4 and 3, T36N-R15E. Corner position monumented by Glen Barker, RLS, 1986. Certificate on file in Forest County, Document No. 131943.
5. Quarter corner common to Sections 4 and 3, T36N-R15E. Corner position monumented by Alan Harrison, RLS, 1994. Certificate on file in Forest County, Document No. 152896.
6. Quarter corner common to Sections 5 and 4, T36N-R15E. Corner position monumented by Alan Harrison, RLS, 1985. Certificate on file in Forest County, Document No. 131685.
7. Section corner common to Sections 5, 4, 8 and 9, T36N-R15E. Corner position monumented by Milo Stefan, RLS, in 1984. Certification on file in Forest County, Document No. 146864.
8. Quarter corner common to Sections 4 and 9, T36N-R15E. Corner position monumented by Kim Pritzlaff, RLS, in 1985 and recovered by Alan Harrison, 1994. Certificate on file in Forest County, Document No. 152895.
9. East one-sixteenth corner common to Sections 4 and 9, T36N-R15E. Corner position monumented by Kim Pritzlaff. No Document.
10. Section corner common to Sections 4, 3, 9 and 10, T36N-R15E. Corner position monumented by Milo Stefan, RLS, 1984. Certificate on file in Forest County, Document No. 127227.

CORNERS ESTABLISHED

1. Northeast one-sixteenth corner Section 4, T36N-R15E. Established corner position at the intersection of straight lines between opposing one-sixteenth corner positions on the perimeter of the NE quarter of Section 4.
2. North one-sixteenth corner common to Sections 4 and 3, T36N-R15E. Established corner position at proportionate distance from and on line between the east 1/4 corner and northeast corner of Section 4.
3. Center east one-sixteenth corner Section 4, T36N-R15E. Established corner position at the mid-point of a straight line between the center and east 1/4 corners of Section 4.

SURVEYOR'S AFFIDAVIT

State of Wisconsin)
) ss.
County of Forest)

I, John R. Garske, Land Surveyor for Coleman Engineering Company and a registered surveyor in the State of Wisconsin, hereby certify that this survey of Section 4, Township 36 North, Range 15 East, Fourth Principal Meridian, State of Wisconsin, was performed under my direct responsible supervision.

The plat map and the notes herewith are a correct representation of the land surveyed and divided. I have surveyed and subdivided said section in accordance with the rules for survey of the public lands and with the statutes of the State of Wisconsin.



John R. Garske
John R. Garske
Coleman Engineering Company
R.L.S., State of Wisconsin
License No. S-1685

Plat ready for filing:

Tom Stueck
District Ranger

Date of Survey: 1995

