

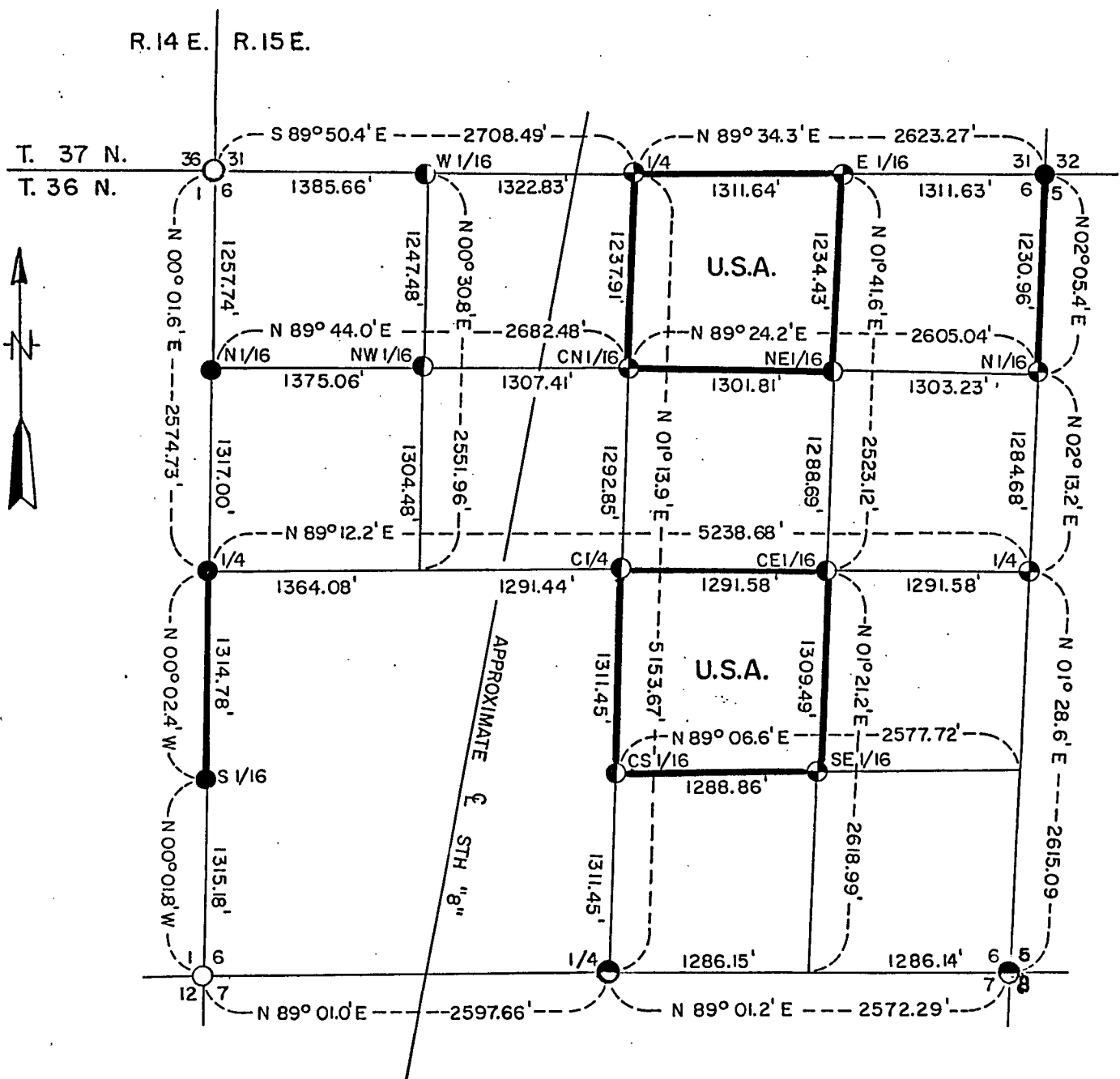
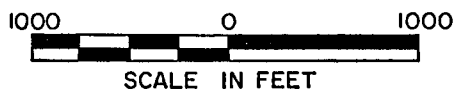
Stock No. 26273

County Clerk

SHEET 1 OF 6

PLAT OF SURVEY U.S. GOVERNMENT LAND

Being the NW1/4 NE1/4 and the NW1/4 SE1/4 of Section 6
Township 36 North, Range 15 East, Fourth Principal Meridian
FOREST COUNTY, WISCONSIN



LEGEND

- County Monument
- ⊕ 2" Aluminum Monument, 30" Long
- ⊙ 2" Aluminum Monument, 60" Long
- 2" Iron Pipe 60" Long with Brass Cap
- Marked Boundary For U.S. Government Lands
- ⊖ 1 1/2" Iron Pipe

Conversion Factor:
Feet to Meters - 3.280833
Meters to Feet - 0.304801

Stock No. 26273

Sheet 2 of 6

SURVEY NOTES

This survey was made by the U. S. Department of Agriculture, Forest Service, for the purpose of restoring and establishing corners on the perimeter of Section 6, for establishing subdivisional corners within Section 6, and for locating and marking the boundaries of U. S. Government land on their perimeter and within Section 6, Township 36 North, Range 15 East, Fourth Principal Meridian, Forest County, Wisconsin.

The U. S. Government lands in this section were acquired in 1935 and 1948.

The original Government subdivision survey of this township was made in 1857. A subsequent survey was made in 1911 by J. J. Melindy, then again in 1976 by P. Hansen (R.L.S. - 498).

The corner positions recovered, restored, and established by this survey are marked by the monument described in the map legend.

The corner positions established were located to an accuracy of one part in 3000.

The bearings between corner positions are true bearings as determined by solar observations.

The field notes of this survey and a copy of this plat are on file in the Forest Supervisor's Office at Rhinelander, Wisconsin.

CORNERS RECOVERED AND RESTORED

1. Section Corner to Sections 36, 31, 6, and 1, T.36-37N., R.14-15E.
Corner position documented on Corner Certificate No. 94351 and recorded in the Forest County Courthouse on March 29, 1968. Corner was recovered from the evidence of the original Government survey.

Corner References:

Sugar	18"	N.26°E.	18.19 feet
Sugar	10"	S.44°E.	22.47 feet
Sugar	7"	S.27°W.	37.46 feet
Sugar	9"	N.73°W.	18.86 feet
Steel Sign Post		East	2.60 feet

2. Section Corner to Sections 31, 32, 5, and 6, T.36-37N., R.15E.
Corner position documented on Corner Certificate No. 108696 filed in Forest County Courthouse on February 4, 1976.

Corner References:

Red Maple	8"	N.68°E.	11.15 feet
White Spruce	7"	S.66°W.	19.18 feet
White Spruce	9"	N.69°W.	23.63 feet
Steel Sign Post		South	1.90 feet

3. Section Corner to Sections 6, 5, 7, and 8, T.36N., R.15E.
Corner position documented on Corner Certificate No. 109431 filed in the Forest County Courthouse June 11, 1976.

Stock No. 26273

Sheet 3 of 6

4. Section Corner to Sections 1, 6, 7, and 12, T.36N., R.14-15E.
Corner position documented on Corner Certificate No. 94219 filed in the Forest County Courthouse. Position was a perpetuated position from original evidence.
5. Quarter Corner to Sections 31 and 6, T.36-37N., R.15E.
Corner position was restored by proportional distance from original remains of a line tree to west and section corner to east.
Corner References:
- | | | | | |
|-----------------|----|---------|--------|------|
| Sugar | 6" | N.57°E. | 29.51 | feet |
| Sugar | 6" | S.71°E. | 38.44 | feet |
| County Monument | | S.72°W. | 105.38 | feet |
| Sugar | 6" | N.47°W. | 29.24 | feet |
| Steel Sign Post | | East | 1.20 | feet |
6. Quarter Corner to Sections 5 and 6, T.36N., R.15E.
Corner position recovered from a survey done by J. J. Melindy in 1911. Melindy perpetuated corner from original evidence.
Corner References:
- | | | | | |
|------------------------------------|----|-----------|-------|------|
| Red Maple | 5" | N.19°E. | 26.40 | feet |
| Dbl. Red Maple | 7" | N.71°E. | 30.75 | feet |
| Boulder 5'x7' with
chiseled "X" | | S.19°W. | 53.58 | feet |
| County Monument | | S.43°W. | 5.81 | feet |
| White Birch | | S.81°W. | 40.64 | feet |
| Steel Sign Post | | Northwest | 1.10 | feet |
7. Quarter Corner to Sections 6 and 7, T.36N., R.15E.
Corner position recovered, marked by a 1½" iron pipe as set by Hansen, S-498.
Corner References:
- | | | | | |
|-----------------|----|---------|-------|------|
| Red Pine | 7" | S.20°E. | 20.73 | feet |
| Witness Corner | | South | 10.05 | feet |
| Power Pole | | S.83°W. | 78.03 | feet |
| Steel Sign Post | | South | 9.00 | feet |
8. Quarter Corner to Sections 1 and 6, T.36N., R.14-15E.
Corner position recovered, marked by a county monument as set by Hansen, S-498.
Corner References:
- | | | | | |
|-----------------|----|---------|-------|------|
| Cedar | 7" | N.47°E. | 39.11 | feet |
| Cedar | 6" | N.70°E. | 45.11 | feet |
| Black Ash | 6" | N.83°W. | 15.71 | feet |
| Steel Sign Post | | South | 4.40 | feet |
9. North One-Sixteenth Corner to Sections 6 and 5, T.36N., R.15E.
Corner position was recovered by information from a survey done by J. J. Melindy in May of 1911.
Corner References:
- | | | | | |
|---------------------------------------|-----|---------|-------|------|
| Spruce | 10" | N.56°E. | 31.23 | feet |
| Red Maple | 6" | S.53°W. | 37.22 | feet |
| Boulder 4'x4'x2'
with chiseled "X" | | N.50°W. | 23.59 | feet |
| Steel Sign Post | | East | 2.70 | feet |

Stock No. 26273

Sheet 4 of 6

10. North One-Sixteenth Corner to Sections 1 and 6, T.36N., R.15E.

Corner position recovered, marked by a county monument as set by Hansen, S-498.

Corner References:

Sugar		N.07°E.	49.39 feet
Red Maple		S.31°E.	13.92 feet
Steel Sign Post		North	3.60 feet

11. South One-Sixteenth Corner to Sections 1 and 6, T.36N., R.14-15E.

Corner position recovered, marked by a county monument as set by Hansen, S-498.

Corner References:

Red Maple	6"	S.55°E.	39.50 feet
Red Maple	6"	N.62°W.	20.58 feet
White Spruce	5"	S.36°W.	47.78 feet
Steel Sign Post		North	3.20 feet

CORNERS ESTABLISHED1. Center Quarter Corner to Section 6, T.36N., R.15E.

Corner position established on the intersection of straight lines between opposing quarter corners on the perimeter of Section 6.

Corner References:

Cedar	7"	N.10°E.	12.60 feet
Ash	5"	S.71°E.	20.62 feet
Ash	7"	S.75°W.	48.05 feet
County Monument		S.87°W.	51.24 feet
Steel Sign Post		South	0.90 feet

2. West One-Sixteenth Corner to Sections 6 and 31, T.36-37N., R.15E.

Corner position established on line and at its proportional position between the township corner to the west and the quarter corner to the east.

Corner References:

Spruce	10"	N.50°E.	27.79 feet
Spruce	10"	S.58°E.	10.71 feet
Cedar	9"	N.46°W.	19.29 feet
Steel Sign Post		West	2.60 feet

3. East One-Sixteenth Corner to Sections 31 and 6, T.36-37N., R.15E.

Corner position established midpoint and on line between the north quarter corner and the northeast corner of Section 6.

Corner References:

Hemlock	8"	N.29°E.	28.77 feet
Hemlock	8"	S.65°W.	12.29 feet
Hemlock	7"	N.28°W.	43.32 feet
Steel Sign Post		South	1.40 feet

4. Center North One-Sixteenth Corner to Section 6, T.36N., R.15E.

Corner position established at its proportional distance and on line between the center quarter and north quarter corners of Section 6.

Corner References:

Sugar	6"	N.09°E.	40.47 feet
Sugar	6"	S.21°E.	20.87 feet
County Monument		S.76°W.	76.18 feet
Sugar	4"	S.83°W.	28.96 feet
Steel Sign Post		North	0.80 feet

Stock No. 26273

Sheet 5 of 6

5. Center East One-Sixteenth Corner to Section 6, T.36N., R.15E.

Corner position established midpoint and on line between the center and east quarter corners.

Corner References:

Cedar	10"	N.21°E.	8.94 feet
Cedar	6"	S.48°W.	18.35 feet
Cedar	6"	N.34°W.	8.85 feet
Steel Sign Post		West	2.00 feet

6. Center South One-Sixteenth Corner to Section 6, T.36N., R.15E.

Corner position established midpoint and on line between the center and the south quarter corners.

Corner References:

Black Spruce	8"	N.49°E.	18.10 feet
Tamarack	8"	South	38.30 feet
County Monument		S.86°W.	25.68 feet
Tamarack	8"	N.67°W.	6.07 feet
Steel Sign Post		North	0.70 feet

7. Northwest One-Sixteenth Corner to Section 6, T.36N., R.15E.

Corner position established on the intersection of straight lines between the opposing sixteenth corner positions on the perimeter of the northwest quarter of Section 6.

Corner References:

Cedar	6"	N.12°E.	19.91 feet
Ash	8"	S.30°E.	2.01 feet
Cedar	6"	N.64°W.	34.93 feet
Steel Sign Post		West	2.40 feet

8. Northeast One-Sixteenth Corner to Section 6, T.36N., R.15E.

Corner position established on the intersection of straight lines between the opposing sixteenth corner positions on the perimeter of the northeast quarter of Section 6.

Corner References:

Cedar	12"	S.83°E.	56.06 feet
Hemlock	10"	S.13°W.	23.23 feet
Hemlock	10"	N.31°W.	47.40 feet
Steel Sign Post		North	2.00 feet

9. Southeast One-Sixteenth Corner to Section 6, T.36N., R.15E.

Corner position established on the intersection of straight lines between the opposing sixteenth corner positions and on the perimeter of the southeast quarter of Section 6.

Corner References:

Sugar	10"	N.56°E.	7.38 feet
Sugar	11"	S.59°E.	33.28 feet
Sugar	10"	S.47°W.	22.14 feet
Steel Sign Post		West	2.10 feet

Stock No. 26273

Sheet 6 of 6

SURVEYOR'S AFFIDAVITState of Wisconsin SS
County of Forest

I, Milo E. Stefan, Cadastral Surveyor, USDA, Forest Service, and a registered surveyor in the State of Wisconsin, hereby certify that I have surveyed and subdivided Section 6, Township 36 North, Range 15 East, Fourth Principal Meridian, State of Wisconsin.

The plat map and the notes herewith are a correct representation of the land surveyed and divided. I have surveyed and subdivided said section in accordance with the rules for survey of the public lands and with the statutes of the State of Wisconsin.

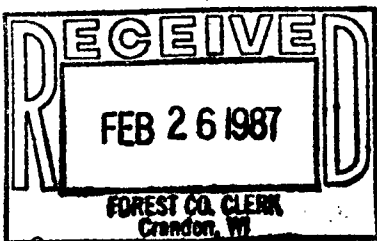
*Milo E. Stefan*

Cadastral Surveyor, USDA, Forest Service
R.L.S., State of Wisconsin
Certificate S-1558

Plat Ready For Filing:

Dale S. Staegge
District Ranger

Date of Survey: 1985 and 1986

*Dora C. James*
Forest Co. Clerk