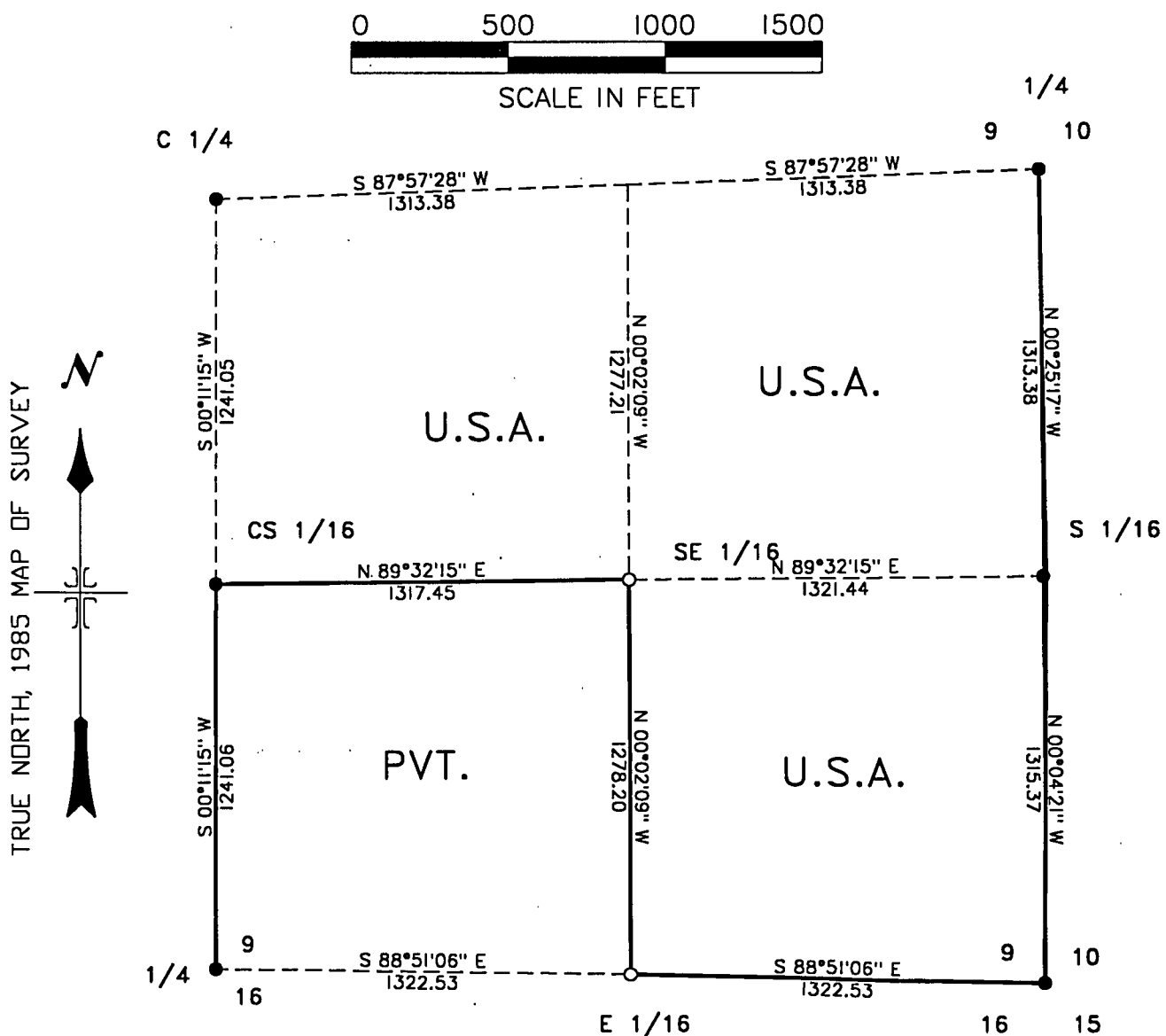


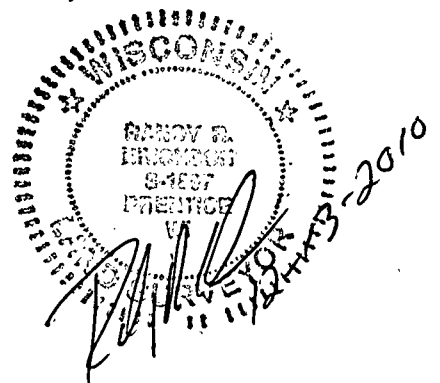
9-11-14

MAP OF SURVEY

U.S. GOVERNMENT LANDS BEING THE NORTH 1/2
 OF THE SOUTHEAST 1/4, AND SOUTHEAST 1/4
 SOUTHEAST 1/4 OF SECTION 09, TOWNSHIP 36
 NORTH, RANGE 15 EAST, FOREST COUNTY, WIS.



- RECOVERED MONUMENT PREVIOUSLY PERPETUATED BY U.S.F.S.
- SET A 1" x 36" ALUMINUM DRIVE MONUMENT W/ 2" CAP.
- LINE MARKED TO U.S.F.S. STANDARDS.





Stock No. 26273

SURVEY NOTES SECTION 09
TOWNSHIP 36 NORTH, RANGE 15 EAST
FOREST COUNTY, WISCONSIN

THIS SURVEY WAS MADE BY THE U.S.D.A. FOREST SERVICE AT THE REQUEST OF THE LANDS PROGRAM MANAGER OF THE CHEQUAMEGON-NICOLET NATIONAL FOREST. THE PURPOSE OF THIS SURVEY WAS TO MARK THE CORNERS AND BOUNDARIES OF LANDS RECENTLY ACQUIRED BY THE U.S. FOREST SERVICE, BEING THE SE 1/4 SE 1/4 OF SECTION 09, T 36 N, R 15 E, FOREST COUNTY, WISCONSIN.

ORIGINAL GOVERNMENT SURVEY: JAMES MC BRIDE, 1859.
IN 1911 SURVEYOR J. MELENDY RETRACED AND SUBDIVIDED SECTION 09 AND THE SOUTHEAST 1/4 THERE OF.

IN 1985, KIM PRITZLAFF, RLS #1259, RETRACED AND SUBDIVIDED SECTION 09 UNDER CONTRACT TO THE U.S. FOREST SERVICE.

THIS SURVEY IS BASED ON PRITZLAFF'S 1985 SURVEY. PRITZLAFF'S MEASUREMENTS WERE FOUND TO BE ACCURATE. BEARINGS ARE BASED ON A SOLAR OBSERVATION BY PRITZLAFF IN 1985. TRUE LINE TRAVERSES WERE MADE USING AN ELECTRONIC TOTAL STATION INSTRUMENT. ERROR OF CLOSURE WAS BETTER THAN 1:5000.

BEARING TREES ARE BLAZED, SCRIBED, AND PAINTED WITH RED PAINT. MEASUREMENTS TO BEARING TREES ARE TO ALUMINUM NAILS IN THE SIDE OF TREES ABOVE THE CENTER OF THE ROOT CROWN.

NO NOTABLE ENCROACHMENTS WERE FOUND ON NATIONAL FOREST LANDS.

SURVEY WAS MADE IN OCTOBER AND NOVEMBER OF 2010.

SURVEY CREW: DAVID BROWNELL AND JIMMY GUMM.

CORNERS RECOVERED

1. CENTER QUARTER CORNER SECTION 09, T 36 N, R 15 E.
RECOVERED MONUMENT AS DESCRIBED ON 1985 PLAT OF SURVEY BY RLS #1259, FILED WITH FOREST COUNTY CLERK, 8-07-1985.
2. QUARTER CORNER SECTIONS 9 AND 10, T 36 N, R 15 E.
RECOVERED MONUMENT AS DESCRIBED ON 1985 PLAT OF SURVEY BY RLS #1259, FILED WITH FOREST COUNTY CLERK, 8-07-1985.
3. QUARTER CORNER SECTIONS 9 AND 16, T 36 N, R 15 E.
RECOVERED MONUMENT AS DESCRIBED ON 1985 PLAT OF SURVEY BY RLS #1259, FILED WITH FOREST COUNTY CLERK, 8-07-1985.
4. SOUTHEAST CORNER SECTION 9, T 36 N, R 15 E.
RECOVERED MONUMENT AS DESCRIBED ON 1985 PLAT OF SURVEY BY RLS #1259, FILED WITH FOREST COUNTY CLERK, 8-07-1985.
5. CENTER SOUTH 1/16 CORNER SECTION 9, T 36 N, R 15 E.
RECOVERED MONUMENT AS DESCRIBED ON 1985 PLAT OF SURVEY BY RLS #1259, FILED WITH FOREST COUNTY CLERK, 8-07-1985.
6. SOUTH 1/16 CORNER SECTION 9 AND 10, T 36 N, R 15 E.
RECOVERED MONUMENT AS DESCRIBED ON 1985 PLAT OF SURVEY BY RLS #1259, FILED WITH FOREST COUNTY CLERK, 8-07-1985.

CORNERS ESTABLISHED

1. SOUTHEAST 1/16 CORNER, SECTION 9, T 36 N, R 15 E.
ESTABLISHED CORNER AT INTERSECTION OF STRAIGHT LINES BETWEEN OPPOSING 1/16 CORNERS ON THE PERIMETER OF THE SOUTHEAST 1/4 OF SECTION 9. SET A 1" X 36" ALUMINUM DRIVE MONUMENT WITH A 2" ALUMINUM CAP STAMPED TO IDENTIFY THE CORNER. MONUMENT EXTENDS 6" ABOVE GROUND. MARKED BEARING TREES:

BALSAM	10"	S 42° E	38.11 FEET
WHITE SPRUCE	12"	S 85° W	14.93 FEET
STEEL SIGN POST		EAST	0.65 FEET
2. EAST 1/16 CORNER SECTIONS 9 AND 16, T 36 N, R 15 E.
ESTABLISHED CORNER MID POINT ON LINE BETWEEN THE SOUTH 1/4 AND SOUTHEAST CORNERS OF SECTION 9. SET A 1" X 36" ALUMINUM DRIVE MONUMENT WITH A 2" ALUMINUM CAP STAMPED TO IDENTIFY THE CORNER. MONUMENT EXTENDS 6" ABOVE GROUND. MARKED BTS:

WHITE SPRUCE	8"	N 21° W	23.63 FEET
RED MAPLE	8"	S 80° W	28.92 FEET
STEEL SIGN POST		NORTHEAST	0.70 FEET

SURVEYORS AFFIDAVIT

I RANDY R. ERICKSON, LAND SURVEYOR FOR THE U.S.D.A. FOREST SERVICE AND A REGISTERED LAND SURVEYOR IN THE STATE OF WISCONSIN, DO HEREBY CERTIFY THAT I HAVE SURVEYED AND SUBDIVIDED THE SOUTHEAST QUARTER OF SECTION 09, TOWNSHIP 36 NORTH, RANGE 15 EAST, 4TH P.M., FOREST COUNTY, WISCONSIN. DURING THIS SURVEY I HAVE COMPLIED WITH THE RULES FOR THE DIVISION OF THE PUBLIC LANDS AND APPLICABLE STATE RULES. THE MAP AND ACCOMPANYING NOTES ARE CORRECT AND ACCURATE TO THE BEST OF MY KNOWLEDGE AND BELIEF.

Randy Erickson
RANDY R. ERICKSON
WIS. REG. L.S. #1897

DATE: 12-13-2010

