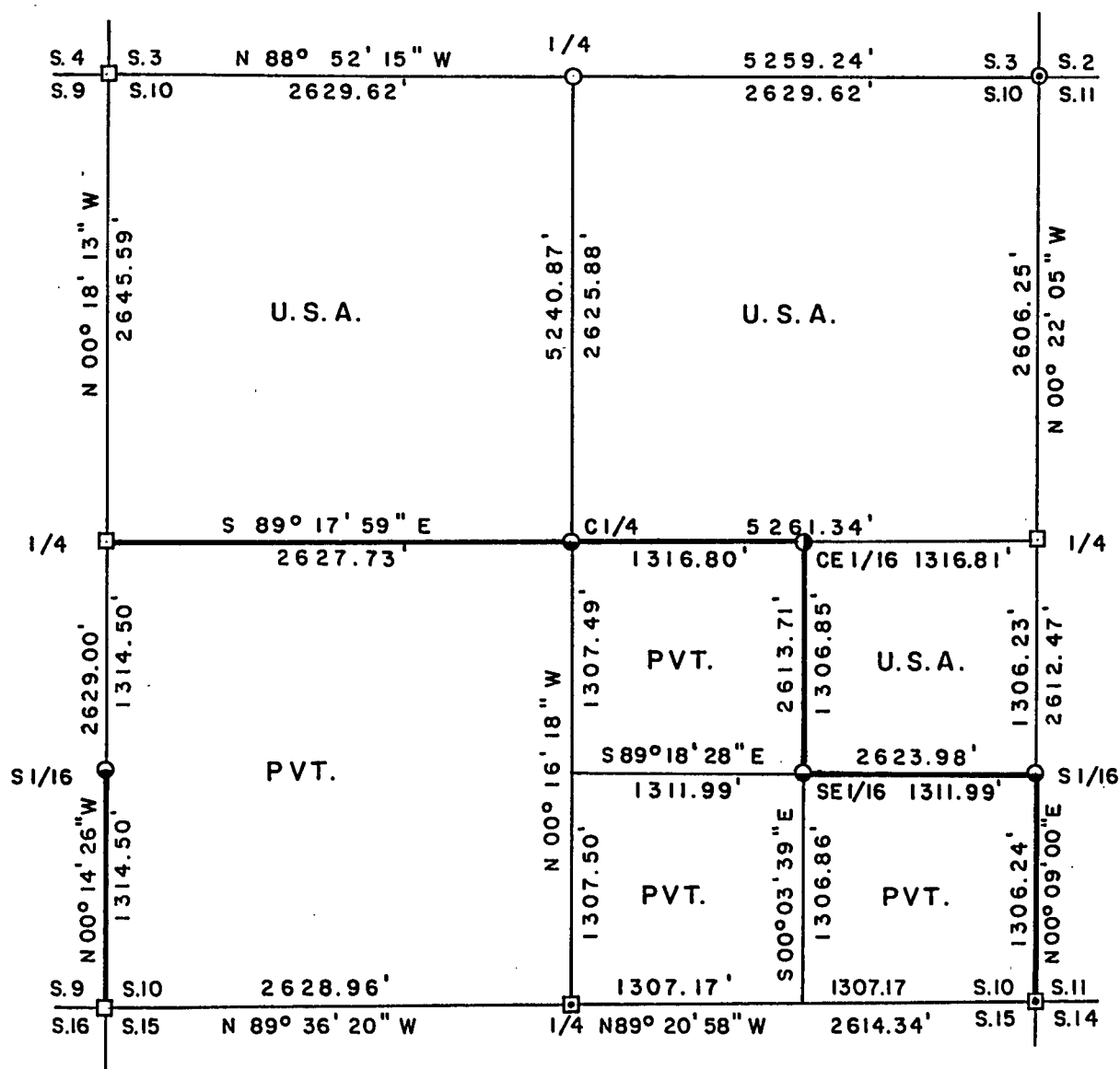


Stock No. 26273

PLAT OF SURVEY FOR CERTIFIED LAND CORNER
RESTORATION AND ESTABLISHMENT
BEING THE CORNERS FOR THE NW1/4, NE1/4, AND NE1/4-SE1/4
OF SECTION 10, T.36N.R.15E., FOURTH PRINCIPAL MERIDIAN
COUNTY OF FOREST, STATE OF WISCONSIN

Sheet 1 of 5



SCALE 1" = 1000'

1000 0 1000



Scale in feet

LEGEND

- 2 inch diameter aluminum pipe monument with an aluminum cap set by U.S.F.S.
- ▣ 2½ inch diameter aluminum pipe monument with an aluminum cap set by U.S.F.S.
- 2½ inch diameter aluminum pipe monument, 36 inches long with an aluminum cap
- ⊙ 2½ inch diameter aluminum pipe monument, 60 inches long with an aluminum cap
- 1 inch diameter aluminum pipe monument, 36 inches long with an aluminum cap
- ⦿ 1 inch diameter aluminum pipe monument, 60 inches long with an aluminum cap
- Boundary line marked to Forest Service standards



Stock No. 26273

Sheet 2 of 5

SURVEY NOTES

This survey was made by Gary L. Pisoni, a Registered Land Surveyor in the State of Wisconsin, for the U.S.D.A., Forest Service, for the purpose of recovering, restoring, establishing, marking, and perpetuating the corners and boundary lines of U.S. Government Land on the perimeter and within Section 10, Township 36 North, Range 15 East, Fourth Principal Meridian, Forest County, State of Wisconsin, as shown on the plat map herewith.

The Original Government Township Lines was done by Artemas Curtis, U.S. Deputy Surveyor in September of 1857. The original Government Sub-division of this township was done by James McBride, U.S. Deputy Surveyor in July of 1859.

The bearings between corner positions are true bearings referenced to the North One-Half of the West section line of Section 10, as determined by a solar observation by Kim H. Pritzlaff of Aaron Associates from a Plat of Survey of 1985 of Section 9. All distances shown thereon are in feet and hundredths of feet. The control traverse was measured by use of an electronic distance measuring equipment.

The accuracy of this survey exceeds the State requirements of 1 in 3000.

The field notes and a copy of the Plat of Survey are on file in the Forest Supervisor's Office at Rhinelander, Wisconsin.

CORNERS RECOVERED AND RESTORED1. Northwest Section Corner

In 1984, Milo Stefan, RLS restored the corner position from acceptance of a 4" X 4" X 6' post and iron pipe.

1984 Corner references:

Cedar	8"	N 11°E	48.71 feet
Cedar	10"	S 29°E	60.29 feet
Hemlock	10"	S 07°W	68.26 feet
Black Spruce	9"	N 72°W	62.98 feet
Steel Sign Post		North	1.60 feet

2. West Quarter Corner

In 1981, Milo Stefan, RLS restored the corner position from acceptance of a 4" X 4" X 12" cedar post and iron pipe.

1981 Corner References:

Red Pine	12"	N 39°E	24.08 feet
White Spruce	10"	S 60°W	11.73 feet
Red Pine	12"	N 37°W	27.74 feet
Steel Sign Post		South	1.40 feet



Stock No. 26273

Sheet 3 of 5

3. Southwest Section Corner

In 1984, Milo Stefan, RLS restored the corner position from acceptance of an original post point in concurrence with original bearing tree evidence.

1984 Corner References:

Tamarack	5"	N 63°E	33.04 feet
Tamarack	6"	S 62°E	34.24 feet
Tamarack	6"	S 71°W	20.46 feet
Tamarack	5"	N 27°W	18.98 feet
Steel Sign Post		South	1.50 feet

4. South Quarter Corner

In 1980, William Cochran, RLS (U.S.F.S.) restored the corner position from a recovered 2" diameter iron pipe known to exist for at least 30 years along with an old post set. No evidence of original McBride aspen bearing tree found. Cochran replaced pipe with 2 1/2" diameter aluminum pipe with stamped aluminum cap and blazed and scribed the following bearing trees:

1980 Corner References:

Maple	8"	N 12°E	21.57 feet
Red Pine	8"	S 22°E	14.93 feet

5. Southeast Section Corner

In 1980, William Cochran, RLS (U.S.F.S.) restored the corner position from a recovered 3" iron pipe and remains of an old cedar post. Cochran replaced pipe with 2 1/2" diameter aluminum pipe with stamped aluminum cap and blazed and scribed the following bearing trees:

1980 Corner References:

Basswood	9"	N 20°E	15.33 feet
Cherry	14"	S 02°W	21.44 feet

1991 Corner References set by Kim Pritzlaff:

Basswood(existing)	14"	N 20°E	15.33 feet
Cherry	16"	S 02°W	21.44 feet
Balsam	5"	S 72°W	14.70 feet
Maple	6"	N 12°W	18.64 feet

6. East Quarter Corner

In 1981, Milo Stefan, RLS restored the corner position from a recovered 2" iron pipe set by J.J. Melindy in 1915 and an old 4" X 4" cedar post. Stefan noted a 13" Cedar bearing N 62°E, 37.8 feet from corner that had a location poster attached. Stefan placed a 2" diameter by 60" aluminum pipe with stamped cap alongside of post and pipe.

1981 Corner References:

Black Ash	6"	N 52°E	40.88 feet
Silver Maple	16"	N 70°W	99.03 feet
Steel Sign Post		South	1.30 feet

1994 Corner References:

B. Ash (existing)	8"	N 52°E	40.88 feet
Cedar (existing)	15"	N 62°E	37.80 feet
Silver Maple (")	16"	N 70°W	99.08 feet
Cedar (new)	9"	S 74°E	62.05 feet



Stock No. 26273

Sheet 4 of 5

7. Northeast Section Corner

Corner position restored by double proportionate measurement methods between the Northwest Section corner of Section 10 and the Southeast Section corner of Section 2 and between the Northwest corner of Section 2 and the East Quarter corner of Section 10.

Corner References:

Steel Sign Post	North	1.35 feet
Steel Sign Post	South	1.13 feet
Steel Sign Post	East	1.30 feet

8. North Quarter Corner

Corner position restored at midpoint and on line between the Northeast corner and Northwest corner of Section 10.

Corner References:

Red Pine	12"	S 66°E	37.58 feet
Red Pine	12"	S 13°E	14.02 feet
Red Pine	13"	S 48°W	16.93 feet
Red Pine	10"	S 82°W	58.28 feet
Steel Sign Post		North	0.80 feet
Aspen Post	4"x4"x12"	N 41°E	5.12 feet

CORNERS ESTABLISHED1. South Sixteenth Corner between Sections 10 and 11.

Corner position established at midpoint and on line between the Southeast Section corner and East Quarter corner of Section 10.

NOTE: Actual S 1/16 corner in Peshtigo River.

Corner References for West Witness Corner, 134.88 feet at S 89°18'28"E to S 1/16 corner in river.

Red Maple	14"	N 30°W	9.87 feet
Sugar Maple	13"	S 66°W	38.77 feet
Steel Sign Post		West	0.73 feet

Corner References for South Witness Corner, 149.33 feet at N 00°09'E to S 1/16 corner in river.

Sugar Maple	12"	S 44°E	20.16 feet
Sugar Maple	9"	S 10°W	47.50 feet
Steel Sign Post		South	0.95 feet

2. Southeast Sixteenth Corner

Corner position established at the intersection of straight lines between opposing sixteenth corner positions on the perimeter of the Southeast quarter of Section 10.

Corner References:

Hemlock	12"	S 13°E	19.75 feet
Sugar Maple	7"	N 42°W	55.50 feet
Iron Pipe	1 1/4"	S 61°E	9.37 feet
Steel Sign Post		S 27°E	1.37 feet



Stock No. 26273

Sheet 5 of 5

3. Center East Sixteenth Corner

Corner position established at midpoint and on line between the East quarter corner and the Center quarter corner.

Corner References:

Ash	8"	N 20°E	27.91 feet
Ash	7"	S 20°E	20.51 feet
Iron Pipe	1 1/4"x6'	N 12°W	10.60 feet
Steel Sign Post		N 54°W	0.65 feet

4. Center Quarter Corner

Corner position established at the intersection of the straight lines between opposing quarter corner positions on the perimeter of the section.

Corner References:

Ironwood	8"	S 48°W	8.66 feet
Hemlock	12"	N 08°W	36.48 feet
Iron Pipe	1 1/4"	N 12°E	11.90 feet
Steel Sign Post		N 46°W	1.06 feet

5. South Sixteenth Corner between Sections 9 and 10

Corner position established at midpoint and on line between the Southwest corner and West quarter corner of Section 10.

Corner References:

Sugar Maple	5"	N 27°W	15.35 feet
Red Maple	6"	N 83°E	43.64 feet
Sugar Maple	6"	S 52°E	23.60 feet
Steel Sign Post	8'	N 61°E	2.40 feet
Steel Sign Post	6'	S 45°W	0.88 feet
Erroneous 2" x 36" Al. Mon.		N 76°55'35"E	4.07 feet

SURVEYOR'S CERTIFICATE

State of Wisconsin)ss
County of Forest)

I, Gary L. Pisoni, a Cadastral Surveyor, and a Registered Land Surveyor in the State of Wisconsin, hereby certify that I have surveyed and sub-divided Section 10, Township 36 North, Range 15 East, Fourth Principal Meridian, State of Wisconsin.

The plat map and survey notes herewith are a correct representation of the land surveyed and divided. I have surveyed and sub-divided said section in accordance with the rules for the survey of public lands and with the statutes of the State of Wisconsin.

Date of Survey: 1994

Gary L. Pisoni
Cadastral Surveyor
R.L.S. State of Wisconsin
Certificate S-1634

