



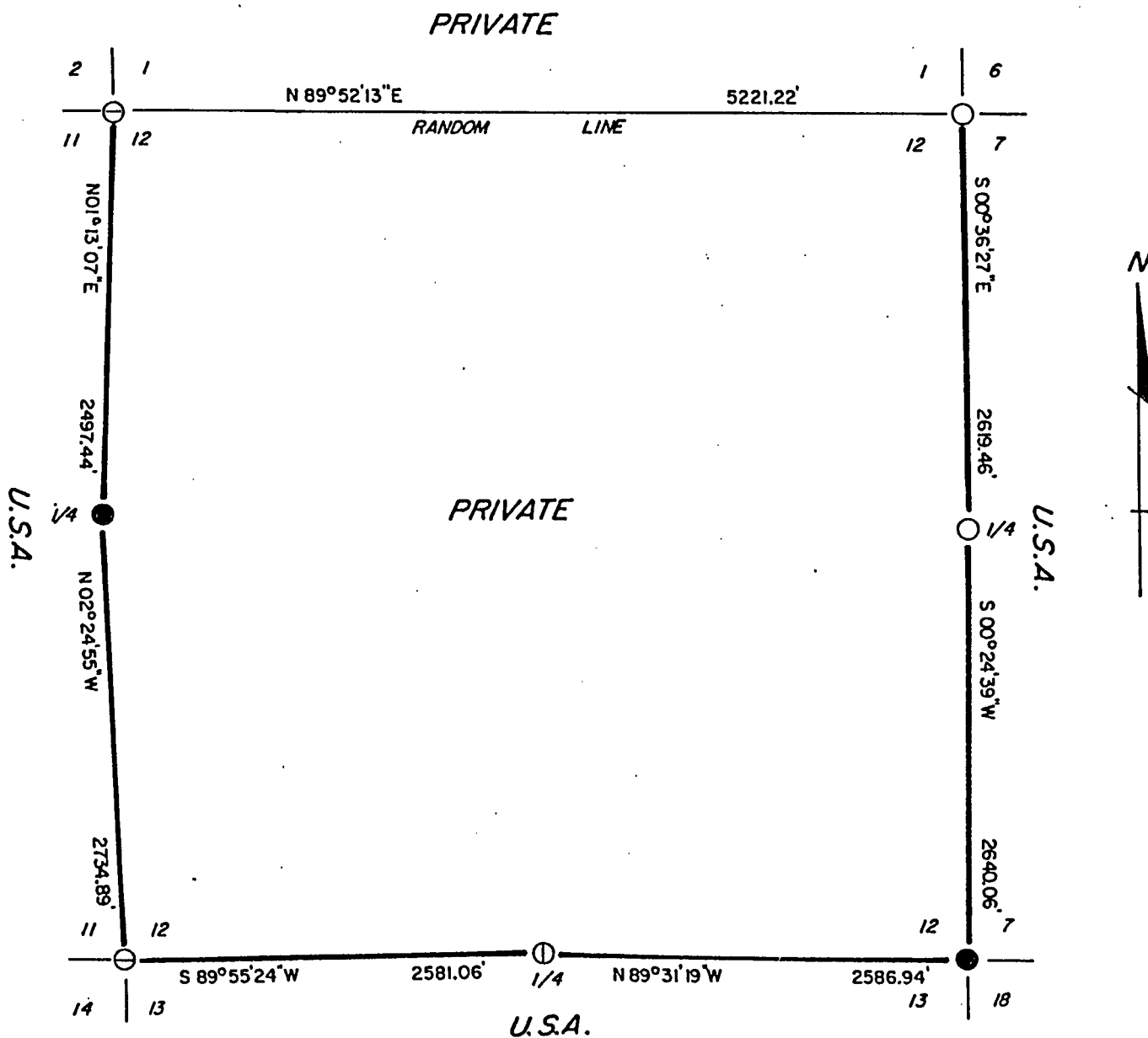
Stock No. 26273

COPY

Sheet one of four

# BOUNDARY LINE ESTABLISHMENT

Being the East, West, and South Lines of Section 12, Township 36 North  
Range 15 East, 4<sup>th</sup> Principal Meridian, Forest County Wisconsin



## LEGEND

- ⊖ 2½" DIAMETER ALUMINUM MONUMENT FOUND, WITH STAMPED CAP FOR CORNER
- 2" DIAMETER ALUMINUM FOREST COUNTY MONUMENT, WITH STAMPED CAP FOR CORNER
- SET 2½" DIAMETER ALUMINUM MONUMENT 36" LONG WITH STAMPED CAP
- ⊕ SET 2½" DIAMETER ALUMINUM MONUMENT 60" LONG WITH STAMPED CAP
- MARKED BOUNDARY LINES OF U.S. GOVERNMENT LANDS



Stock No. 26273

Sheet two of four

## SURVEY NOTES

This survey was made by AARON ASSOCIATES of Oconto Falls, Wisconsin, under contract with the U.S. Department of Agriculture, Forest Service, for the purpose of recovering and restoring the corners along the East, South, and West perimeters of Section 12; and for locating and marking the boundary of the U.S. Government Lands along the East, South, and West lines of Section 12, Township 36 North, Range 15 East, 4th Principal Meridian, Forest County, Wisconsin.

The original survey of this Township was made in 1859 and the Township lines were surveyed in 1857.

The corner position recovered and restored by this survey are marked with monuments described in the legend on the face of this Plat Map.

The corner positions recovered and restored were located to an accuracy of better than one part in 5000.

The bearings between corner positions are True bearings as determined by solar observations.

The field notes of this survey and a copy of the Plat Map are on file in the Forest Supervisor's Office at Rhinelander, Wisconsin.

## CORNERS RECOVERED AND RESETORED

- 1) Section Corner to Sections 1-2-11-12, T36N, R15E.

This corner position was found marked with an aluminum monument set by the US Forest Service survey crew under Al Harrison. Corner certificate on file.

- 2) Section Corner to Sections 1-6-7-12, T36N, R15 & 16E.

This corner position was found marked with an aluminum Forest County monument set by Philip Hansen. Corner certificate on file. The corner was found to be wobbly and was reset with an aluminum monument.

Corner references:

Cedar (OBT)	12"	N 33°E	17.14 ft.
Cedar (OBT)	14"	S 08°E	17.31 ft.
Cedar (OBT)	13"	S 45°W	16.59 ft.
Cedar (OBT)	10"	N 28°W	10.10 ft.
Cedar (NBT)	14"	S 85°W	17.29 ft.
Steel sign post		South	0.70 ft.

- 3) Section Corner to Sections 7-12-13-18, T36N, R15 & 16E.

This corner position was found marked with an aluminum Forest County monuments set by Philip Hansen. Corner certificate on file. Existing bearing trees were painted and BT signs attached. The Spruce was cut and the following new ties set:

Maple	6"	N 43°E	19.20 ft.
Steel sign post		West	0.60 ft.

Stock No. 26273

Sheet three of four

## 4) Section Corner to Sections 11-12-13-14, T36N, R15E.

This corner position was found marked with an aluminum monument set by the US Forest Service survey crew under Al Harrison. Corner certificate on file.

## 5) Quarter Corner to Sections 11-12, T36N, R15E.

This corner position was found marked with an aluminum Forest County Monument set by Philip Hansen. Corner certificate on file. The monument was set more stably in the ground than the existing 12" above ground called for. The bearing trees of Hansen's were painted and signed to USFS standards and the following tie was set.

Steel sign post	North	0.80 ft.
-----------------	-------	----------

## 6) Quarter Corner to Sections 7-12, T36N, R15 &amp; 16E.

This corner position was found marked with blazed trees facing evidence of an old post hole 18" deep. Beaver blazes on a Yellow Birch facing the post hole and an old metal location tag found on a Yellow Birch tree base helped locate the post hole. Swamp call to the south fit within a half chain. The post hole evidence was accepted as the corner perpetuation and monumented. Corner references:

Hemlock	13"	N 42°E	13.68 ft.
Yellow Birch	24"	S 47°E	4.96 ft.
Maple	10"	S 86°W	11.43 ft.
Steel sign post		South	0.50 ft.

## 7) Quarter Corner to Sections 12-13, T36N, R15E.

This corner position was restored from an old cedar post point found under the swamp grass matt from which an old Balsam tree was found laying down. The Balsam was marked in 1928 from two cruisers, Carr and Martin who found an old post at this corner location. The post fit stream calls to the west within a half chain and fell within 10 feet of the single proportionate measurement. It was accepted as the corner perpetuation and replaced by an aluminum monument.

Corner references:

Maple	6"	S 25°W	115.18 ft.
Maple (double)	4"	S 65°W	63.46 ft.
White Pine	25"	S 80°W	85.59 ft.
Steel sign post		East	0.60 ft.



Stock No. 26273

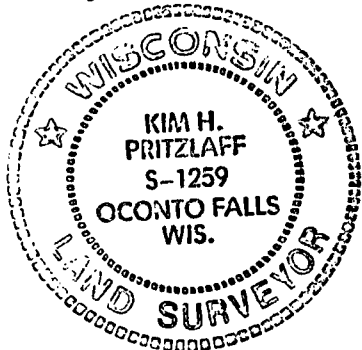
Sheet four of four

## SURVEYOR'S AFFIDAVIT

STATE OF WISCONSIN)  
OCONTO COUNTY )SS

I, Kim H Pritzlaff, Registered Land Surveyor in the State of Wisconsin hereby certify: that I have resurveyed Section 12 of Township 36 North, Range 15 East, 4th Principal Meridian, Forest County, Wisconsin, along the East, South, and West lines thereof.

That the field notes and Plat Map herewith are a true and correct representation of the lines established and that I have done so in accordance with the rules of survey of the Public Lands and the Statutes of the State of Wisconsin.

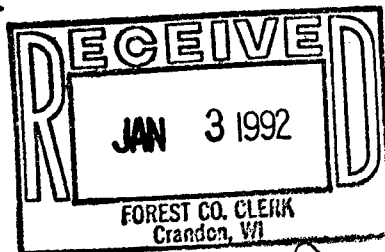


Date of Survey: 1991

Kim H Pritzlaff, RLS No. 1259  
AARON ASSOCIATES  
Oconto Falls, Wisconsin

Plat ready for filing:

\_\_\_\_\_  
District Ranger



*Susan J. Miller*  
Deputy County Clerk