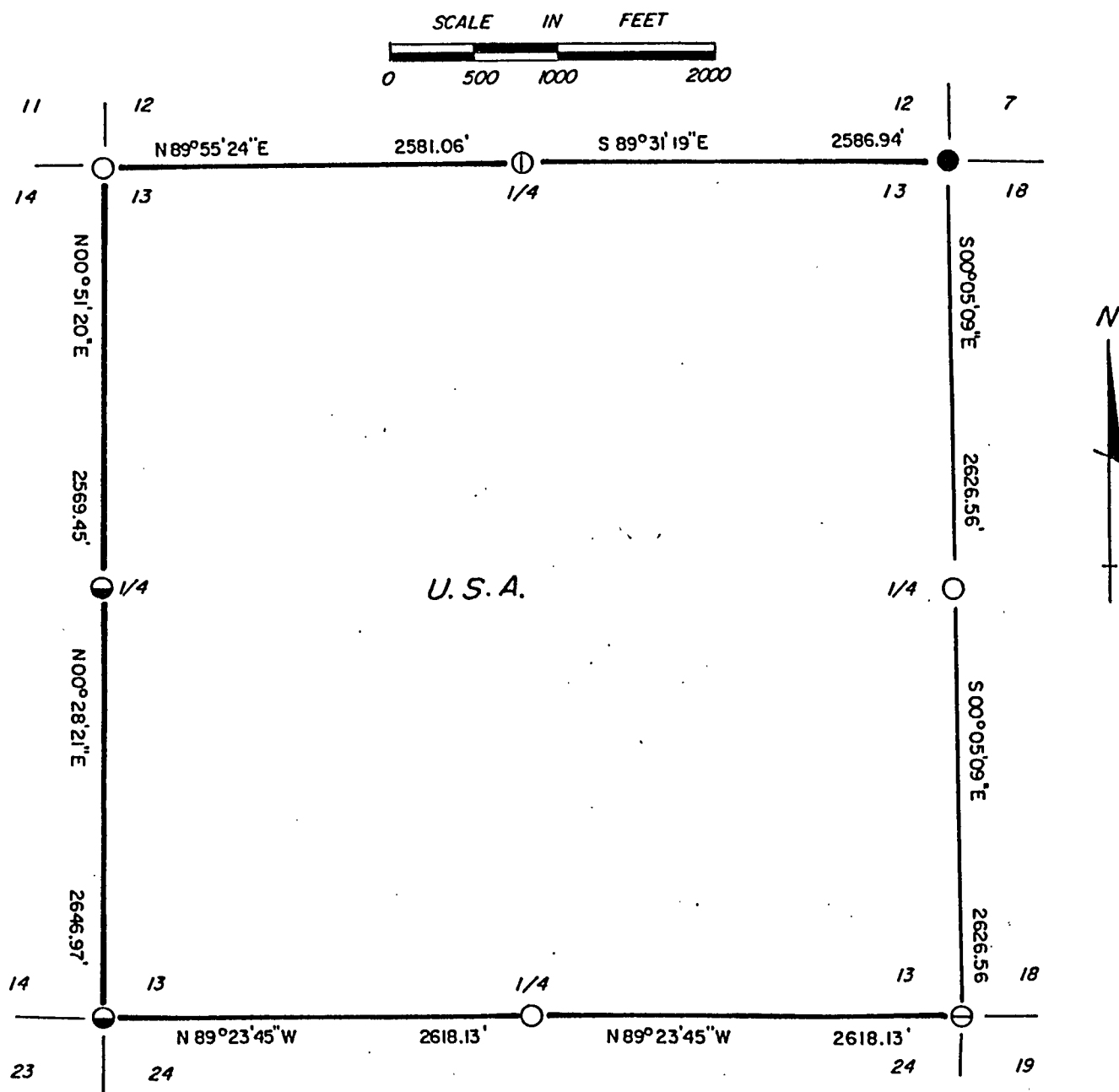


COPY

Sheet one of three

PLAT OF SURVEY U.S. GOVERNMENT LANDS

Being all of Section 13, Township 36 North, Range 15 East,
4th Principal Meridian, Forest County Wisconsin



LEGEND

- ⊙ 2½" DIAMETER ALUMINUM MONUMENT WITH CAP STAMPED FOR CORNER
- 2" DIAMETER IRON PIPE WITH BRASS CAP STAMPED FOR CORNER
- SET 2½" DIAMETER ALUMINUM MONUMENT, 36" LONG WITH STAMPED CAP
- ⊙ SET 2½" DIAMETER ALUMINUM MONUMENT, 60" LONG WITH STAMPED CAP
- 2" DIAMETER FOREST COUNTY MONUMENT WITH STAMPED CAP, ALUMINUM CAST
- MARKED BOUNDARY LINES OF U.S. GOVERNMENT LANDS

Stock No. 26273

Sheet two of three

SURVEY NOTES

This survey was made by AARON ASSOCIATES of Oconto Falls, Wisconsin, under contract with the U.S. Department of Agriculture, Forest Service, for the purpose of recovering and restoring corners of the Public Land Survey along the perimeter of Section 13, and for locating and marking the boundary lines of U.S. Government lands on the perimeter of Section 13, Township 36 North, Range 15 East, 4th Principal Meridian, Forest County, Wisconsin.

The U.S. Government lands in Section 13 were acquired in 1935.

The original survey of this township was made in 1859 and the township lines were surveyed in 1857.

The corner positions recovered and restored by this survey are marked with monuments as described in the Legend on the face of this Plat Map.

The corner positions recovered and restored were located to an accuracy of better than one part in 5000.

The bearings between corner positions are True bearings as determined from solar observations.

The field notes and a copy of the Plat Map are on file in the Forest Supervisor's Office at Rhinelander, Wisconsin.

CORNERS RECOVERED AND RESTORED

- 1) Section Corner to Sections 11-12-13-14, T36N, R15E.

This corner position was found marked with an aluminum monument set by the U.S. Forest Service survey crew under Allan Harrison. Corner certificate on file.

- 2) Section Corner to Sections 7-12-13-18, T36N, R15 & 16E.

This corner position was found marked with an aluminum Forest County monument set by Philip Hansen. Corner certificate on file.

- 3) Section Corner to Sections 13-18-19-24, T36N, R15 & 16E.

This corner position was found marked with an aluminum monument set by the U.S. Forest Service survey crew under Allan Harrison. Corner certificate on file.

- 4) Section Corner to Sections 13-14-23-24, T36N, R15E.

This corner position was found marked with an iron pipe and brass cap set by the U.S. Forest Service survey crew under William Cochrane. Corner certificate on file.

- 5) Quarter Corner to Sections 13-14, T36N, R15E.

This corner position was found marked with an iron pipe and brass cap set by the U.S. Forest Service survey crew under Milo Stefan. Corner certificate on file.



Stock No. 26273

Sheet three of three

6) Quarter Corner to Sections 12-13, T36N, R15E.

This corner position was restored from an old post point found under the swamp grass map located from an old blazed Balsam Fir Tree marked in 1928 by Carr and Martin, timber cruisers from old post found by them. The post fit stream calls to the west within a half chain and fell within 10 feet of single proportionate position. It was accepted and replaced by and aluminum monument. Corner references:

Maple	6"	S 25°W	115.18 ft.
Maple (double)	4"	S 65°W	63.46 ft.
White Pine	25"	S 80°W	85.59 ft.
Steel sign post		East	0.60 ft.

7) Quarter Corner to Sections 13-18, T36N, R15 & 16E.

After a diligent search of a clear cut and Popple slashing area, this corner position was determined to be lost and was set at single proportionate measurement between opposite section corners.
Corner references:

Oak	8"	S 20°E	66.10 ft.
Oak	9"	S 30°W	24.44 ft.
Oak	11"	N 10°W	73.83 ft.
Steel sign post		North	0.70 ft.

8) Quarter Corner to Sections 13-24, T36N, R15E.

This corner position was determined to be lost after an unsuccessful search for bearing tree evidence or corner post occupation. It was then set by single proportionate measurement between opposite section corners.
Corner references:

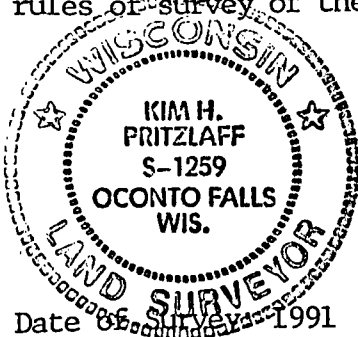
Maple	12"	N 31°E	39.83 ft.
Maple	8"	S 71°E	22.47 ft.
Maple	13"	S 26°W	18.33 ft.
Maple	11"	N 35°W	41.33 ft.
Steel sign post		East	0.60 ft.

SURVEYOR'S AFFIDAVIT

STATE OF WISCONSIN)
OCONTO COUNTY)SS

I, Kim H Pritzlaff, Registered Land Surveyor in the State of Wisconsin, hereby certify: that I have resurveyed Section 13, Township 36 North, Range 15 East, 4th Principal Meridian, Forest County, Wisconsin.

That the filed notes and Plat Map herewith are a true and correct representation of the lands surveyed; and that I have surveyed Section 13 in accordance with the rules of survey of the Public Lands and with the Statutes of the State of Wisconsin.

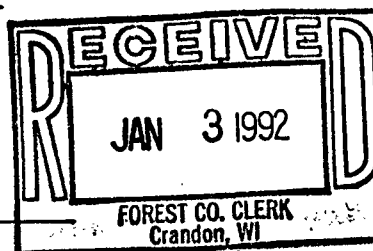


Date of Survey 1991

Kim H. Pritzlaff
Kim H Pritzlaff, RLS No. 1259
AARON ASSOCIATES
Oconto Falls, Wisconsin

Plat ready for filing:

District Ranger



Susan J. Miller
Deputy County Clerk