

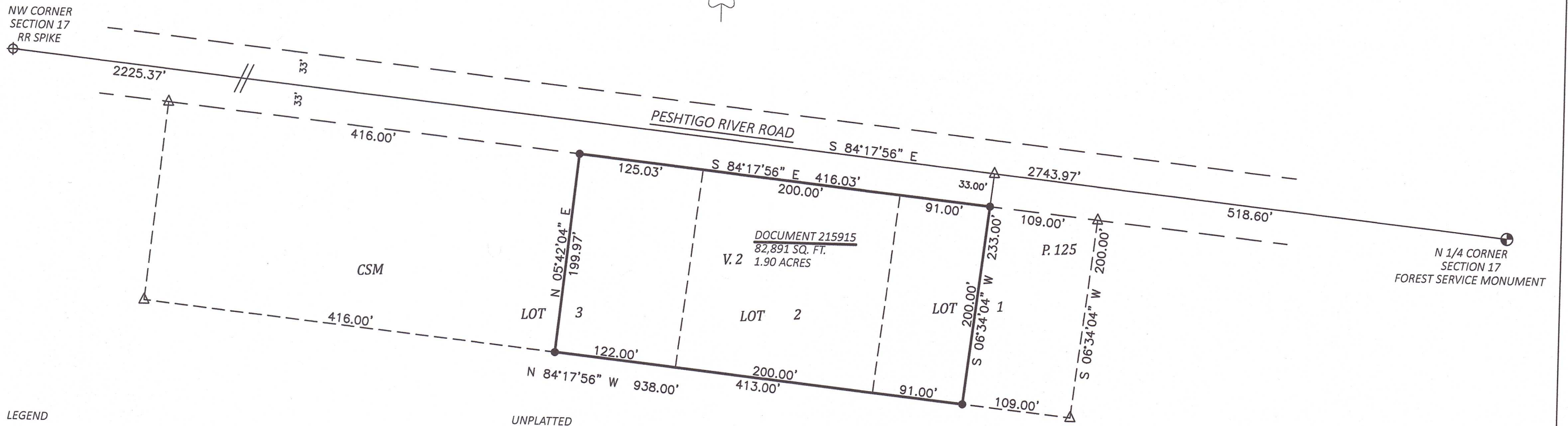
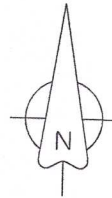
# SURVEY OF

LOT 2 AND PART OF LOTS 1 AND 3  
CSM V 2 P 125, BEING PART OF THE  
NE 1/4 OF THE NW 1/4, SECTION 17,  
T36N R15E TOWN OF LAONA, FOREST  
COUNTY, WISCONSIN

RECEIVED

DEC 14 21

CO. TREASURER

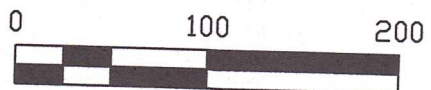


## LEGEND

- △ COMPUTED POINT (NOT MONUMENTED)
- 3/4 INCH REBAR, SET

BEARINGS REFERENCED TO THE  
FOREST COUNTY COORDINATE  
SYSTEM NAD 83 (2011)

CLIENT: LUKE PETERSON



FOREST CO SURVEYOR  
FILE # 361517-20210722  
DATE \_\_\_\_\_ BY \_\_\_\_\_

