

Stock No. 26273

*Co. Clerk*  
**FOREST CO SURVEYOR**

FILE # 361527-1985.0504

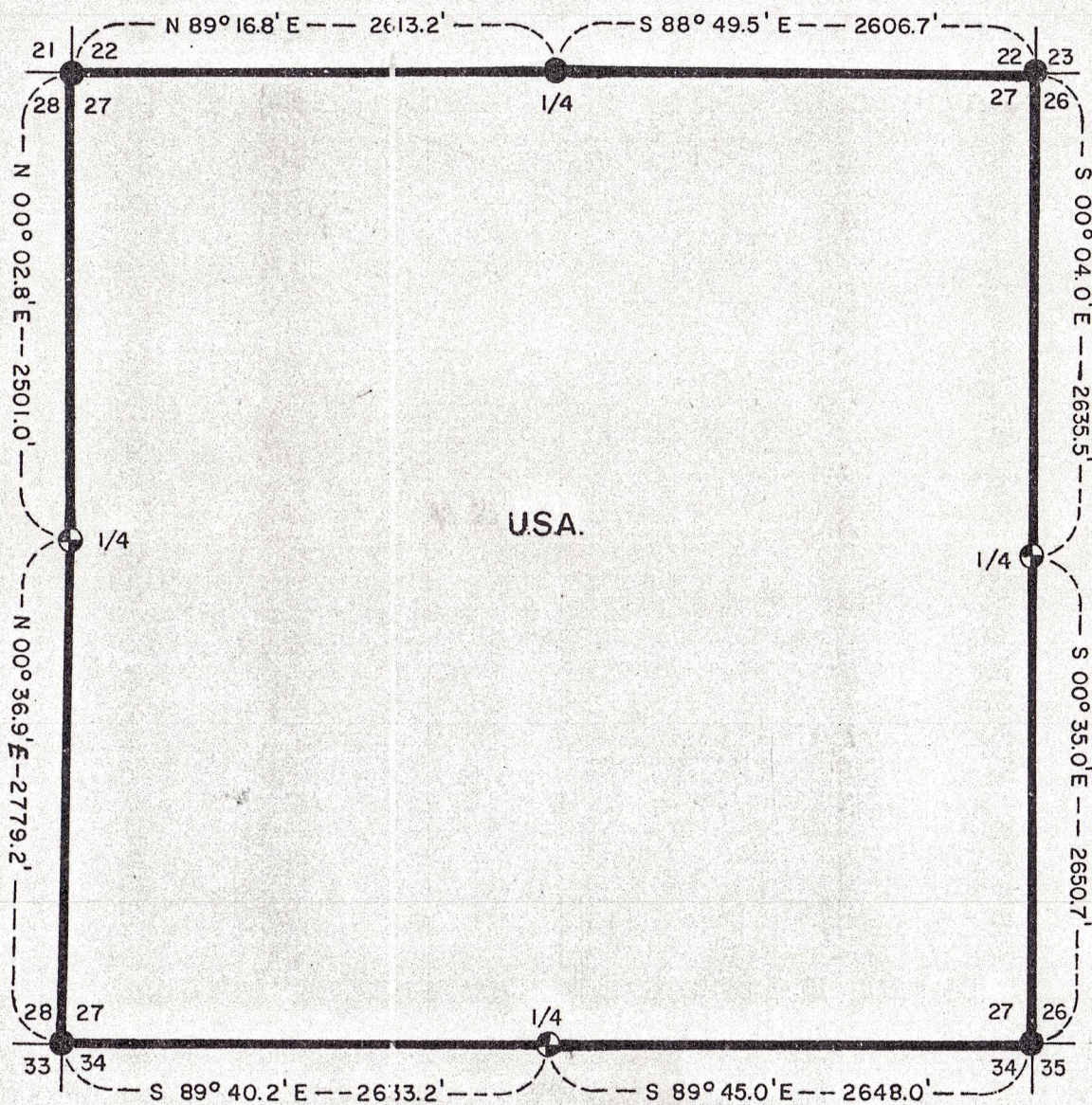
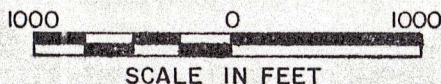
DATE \_\_\_\_\_ BY \_\_\_\_\_

SHEET 1 OF 4

# PLAT OF SURVEY U.S. GOVERNMENT LAND

Being Section 27

Township 36 North, Range 15 East, Fourth Principal Meridian  
FOREST COUNTY, WISCONSIN



### LEGEND

- 2" Diameter Brass Cap Monument, 36" Long
- ⊙ 2" Diameter Aluminum Monument, 36" Long
- Marked Boundary Line of U.S. Government Lands

Stock No. 26273

Sheet 2 of 4

SURVEY NOTES

This survey was made by the U. S. Department of Agriculture, Forest Service, for the purpose of restoring and establishing corners on the perimeter of Section 27 and for locating and marking the boundaries of U. S. Government lands on the perimeter of Section 27, Township 36 North, Range 15 East, Fourth Principal Meridian, Forest County, Wisconsin.

The U. S. Government lands in this section were acquired in 1935.

The original Government subdivision survey of this township was made in 1857. Subsequent survey of exterior bounds of section by Nathan Smith in 1907.

The corner positions recovered and restored by this survey are marked by the monument described in the map legend.

The corner positions established were located to an accuracy of one part in 3000.

The bearings between corner positions are true bearings as determined by solar observations.

The field notes of this survey and a copy of this plat are on file in the Forest Supervisor's Office at Rhinelander, Wisconsin.

CORNERS RECOVERED AND RESTORED1. Section Corner to Sections 21, 22, 27, and 28.

Corner position found marked with an iron pipe with brass cap in mound of rock. Restoration Certificate on file, Document Number 118076.

Corner References:

White Ash	11"	S.85°E.	4.15 feet
White Ash	9"	S.37°E.	21.38 feet
Sugar Maple	6"	S.31°W.	23.57 feet
*White Ash	11"	N.62°W.	6.89 feet
Steel Sign Post		Northeast	.50 feet

\*Cut as of April 23, 1985.

2. Section Corner to Sections 22, 23, 26, and 27.

Corner position found marked with an iron pipe with brass cap. Restoration Certificate on file, Document Number 118078.

Corner References:

Red Pine	8"	N.28°E.	23.90 feet
White Spruce	14"	S.28°W.	51.75 feet
Maple	9"	N.40°W.	31.26 feet
Steel Sign Post		Northwest	.50 feet

Stock No. 26273

Sheet 3 of 4

3. Section Corner to Sections 27, 28, 32, and 34.

Corner position found marked with an iron pipe with brass cap in a mound of stone. Restoration Certificate on file, Document Number 118080.

Corner References:

Basswood	22"	N.16°E	18.85 feet
Ash	17"	S.68°E.	15.64 feet
*Maple	18"	S.66°W.	14.26 feet
Maple	17"	N.41°W.	19.28 feet
Steel Sign Post		Southwest	.70 feet

\*Cut as of April 23, 1985.

4. Section Corner to Sections 26, 27, 34, and 35.

Corner position found marked with an iron pipe with brass cap. Restoration Certificate on file, Document Number 118081.

Corner References:

Yellow Birch	10"	East	25.81 feet
Maple	7"	S.13°E.	21.92 feet
Double Yellow Birch	9"	S.40°W.	20.46 feet
Maple	6"	N.48°W.	9.44 feet
Steel Sign Post		South	.50 feet

5. Quarter Corner to Sections 22 and 27.

Corner position found marked by an iron pipe with brass cap. Restoration Certificate on file, Document Number 118077.

Corner References:

Basswood	10"	S.79°E.	30.89 feet
Maple	11"	S.32°W.	37.20 feet
Steel Sign Post		North	.80 feet

6. Quarter Corner to Sections 27 and 28.

Corner position restored from remains of original survey and subsequent survey by Nathan Smith in 1907.

Corner References:

Sugar Maple	10"	N.49°E.	24.02 feet
Sugar Maple	11"	S.63°E.	18.00 feet
Sugar Maple	6"	S.60°W.	19.41 feet
Steel Sign Post		North	6.60 feet

7. Quarter Corner to Sections 26 and 27.

Corner position restored from remains of original survey and subsequent survey by Nathan Smith in 1907.

Corner References:

Sugar Maple	4"	S.83°E.	15.13 feet
Sugar Maple	4"	S.38°W.	10.80 feet
White Birch	6"	N.37°W.	19.16 feet
Steel Sign Post		South	1.20 feet

8. Quarter Corner to Sections 27 and 34.

Corner position found marked by an iron pipe supported by remains of original survey and subsequent survey by Nathan Smith in 1907.

Corner References:

Sugar Maple	8"	S.30°E.	34.34 feet
Basswood	6"	S.63°W.	23.99 feet
Basswood	10"	N.38°W.	15.20 feet
Steel Sign Post		East	1.50 feet

Stock No. 26273

Sheet 4 of 4

SURVEYOR'S AFFIDAVITState of Wisconsin ]  
County of Forest ] SS

I, Milo E. Stefan, Cadastral Surveyor, U. S. Forest Service and a registered surveyor in the State of Wisconsin, hereby certify that I have surveyed Section 27, Township 36 North, Range 15 East, Fourth Principal Meridian, State of Wisconsin.

The plat map and the notes herewith are a correct representation of the land surveyed. I have surveyed said section in accordance with the rules for survey of the public lands and with the statutes of the State of Wisconsin.

*Milo E. Stefan*

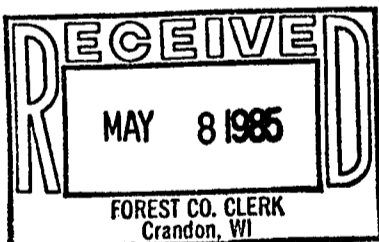
Cadastral Surveyor, U. S. Forest Service  
R.L.S., State of Wisconsin  
Certificate S-1558



Plat Ready For Filing:

*Dale B. Staege*  
District Ranger

Date of Survey: 1983



*Dora C. James*  
Forest Co. Clerk