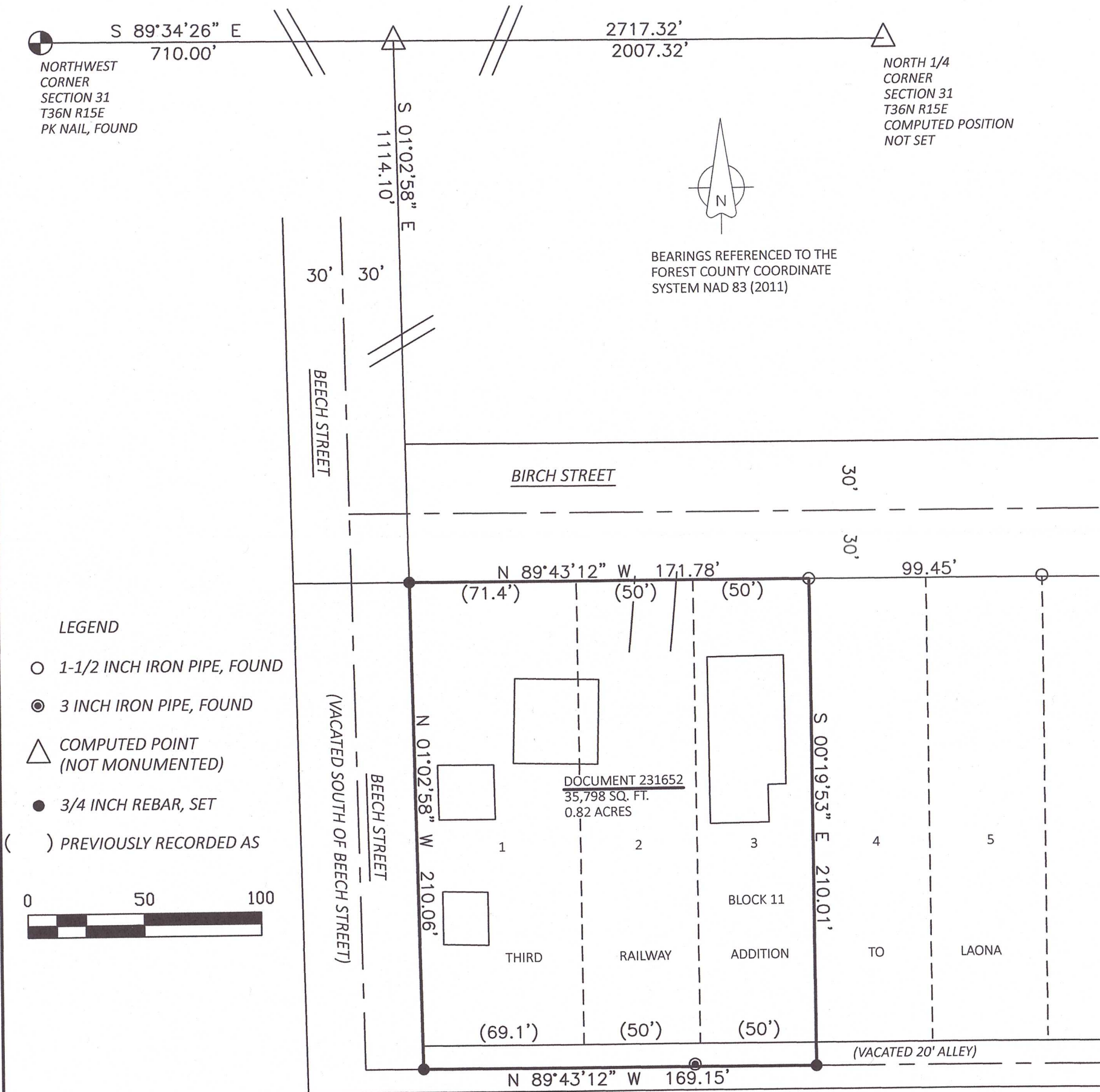


RECEIVED

DEC 14 21

CO. TREASURER

**SURVEY OF**  
**LOTS 1, 2, AND 3, BLOCK 11,**  
**THIRD RAILWAY ADDITION TO LAONA**  
**BEING PART OF**  
**THE NW 1/4 OF THE NW 1/4**  
**SECTION 31, T36N R15E**  
**TOWN OF LAONA**  
**FOREST COUNTY, WISCONSIN**



**FOREST CO SURVEYOR**  
FILE # 361531-20210722  
DATE \_\_\_\_\_ BY \_\_\_\_\_

