

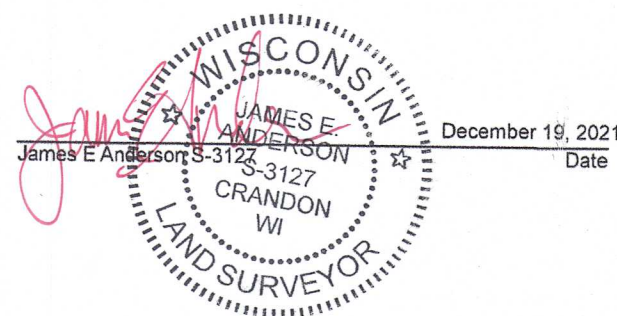
# RESURVEY

LANDS BEING LOTS 10, 11, AND 12,  
BLOCK 18 OF THE PLAT OF THE THIRD  
RAILWAY ADDITION TO THE TOWN OF  
LAONA, LOCATED IN PART OF THE SW  
1/4 OF THE NW 1/4, SECTION 31,  
TOWNSHIP 36 NORTH, RANGE 15 EAST,  
TOWN OF LAONA,  
FOREST COUNTY, WISCONSIN  
DESCRIBED IN DOCUMENT NUMBER 225283

I, James E Anderson, Professional Land Surveyor S-3127 of the State of Wisconsin, do hereby certify to my client, Mary Gilkes, Owner, under whose direction this survey was performed, that I have surveyed, mapped, and described the lands shown on this Map of Survey; being Lots 10, 11, and 12, Block 18 of the Plat of The Third Railway Addition to the Town of Laona, located in part of the Southwest 1/4 of the Northwest 1/4, Section 31, Township 36 North, Range 15 East, Town of Laona, Forest County, Wisconsin.

That said parcels contains a total of 0.50 acres more or less, and is subject to easements, reservations, restrictions, and rights-of-way of record, if any.

That said map is a true and correct representation of the exterior boundaries of lands surveyed, and that I have fully complied with Chapter A-E 7 of the Wisconsin Administrative Code, to the best of my knowledge and belief.



**FOREST CO SURVEYOR**  
**FILE #** 361531-20211219  
**DATE** 04/15/2022 **BY** JA

## LEGEND

- 1" (OD) X 18" LONG IRON PIPE WEIGHING 1.13 LBS/LINEAL FOOT, SET
- △ COMPUTED POSITION
- ⊙ 1" DIA. IRON PIPE, FOUND
- 1-1/2" DIA. IRON PIPE, FOUND WITH FITTING
- ⊕ USPLS MONUMENT, FOUND AS NOTED
- ( ) RECORD DATA

NORTHWEST SEC. COR. SEC. 31  
MAG NAIL  
FOUND & VERIFIED  
SEE USPLS MON. REC. ON FILE  
AT FOREST COUNTY

WEST LINE SEC. 31  
S 00°03'19" E 2630.97'

WEST 1/4 COR. SEC. 31  
RAILROAD SPK  
FOUND & VERIFIED  
SEE USPLS MON. REC. ON FILE  
AT FOREST COUNTY

30' 30'

1163.25'

SPRUCE STREET

N 00°25'04" E 441.05'

20.00' (20')

52.12' (52')

52.12' (52')

52.12' (52')

52.12' (52')

52.12' (52')

52.12' (52')

52.12' (52')

52.12' (52')

52.12' (52')

52.12' (52')

52.12' (52')

52.12' (52')

52.12' (52')

52.12' (52')

52.12' (52')

52.12' (52')

52.12' (52')

52.12' (52')

52.12' (52')

52.12' (52')

52.12' (52')

N 00°25'04" E 441.05'

20.00' (20')

52.12' (52')

52.12' (52')

52.12' (52')

52.12' (52')

52.12' (52')

52.12' (52')

52.12' (52')

52.12' (52')

52.12' (52')

52.12' (52')

52.12' (52')

52.12' (52')

52.12' (52')

52.12' (52')

52.12' (52')

52.12' (52')

52.12' (52')

52.12' (52')

52.12' (52')

52.12' (52')

52.12' (52')

N 00°25'04" E 441.05'

20.00' (20')

52.12' (52')

52.12' (52')

52.12' (52')

52.12' (52')

52.12' (52')

52.12' (52')

52.12' (52')

52.12' (52')

52.12' (52')

52.12' (52')

52.12' (52')

52.12' (52')

52.12' (52')

52.12' (52')

52.12' (52')

52.12' (52')

52.12' (52')

52.12' (52')

52.12' (52')

52.12' (52')

52.12' (52')

N 00°25'04" E 441.05'

20.00' (20')

52.12' (52')

52.12' (52')

52.12' (52')

52.12' (52')

52.12' (52')

52.12' (52')

52.12' (52')

52.12' (52')

52.12' (52')

52.12' (52')

52.12' (52')

52.12' (52')

52.12' (52')

52.12' (52')

52.12' (52')

52.12' (52')

52.12' (52')

52.12' (52')

52.12' (52')

52.12' (52')

52.12' (52')

N 00°25'04" E 441.05'

20.00' (20')

52.12' (52')

52.12' (52')

52.12' (52')

52.12' (52')

52.12' (52')

52.12' (52')

52.12' (52')

52.12' (52')

52.12' (52')

52.12' (52')

52.12' (52')

52.12' (52')

52.12' (52')

52.12' (52')

52.12' (52')

52.12' (52')

52.12' (52')

52.12' (52')

52.12' (52')

52.12' (52')

52.12' (52')

N 00°25'04" E 441.05'

20.00' (20')

52.12' (52')

52.12' (52')

52.12' (52')

52.12' (52')

52.12' (52')

52.12' (52')

52.12' (52')

52.12' (52')

52.12' (52')

52.12' (52')

52.12' (52')

52.12' (52')

52.12' (52')

52.12' (52')

52.12' (52')

52.12' (52')

52.12' (52')

52.12' (52')

52.12' (52')

52.12' (52')

52.12' (52')

N 00°25'04" E 441.05'

20.00' (20')

52.12' (52')

52.12' (52')

52.12' (52')

52.12' (52')

52.12' (52')

52.12' (52')

52.12' (52')

52.12' (52')

52.12' (52')

52.12' (52')

52.12' (52')

52.12' (52')

52.12' (52')

52.12' (52')

52.12' (52')

52.12' (52')

52.12' (52')

52.12' (52')

52.12' (52')

52.12' (52')

52.12' (52')

N 00°25'04" E 441.05'

20.00' (20')

52.12' (52')

52.12' (52')

52.12' (52')

52.12' (52')

52.12' (52')

52.12' (52')

52.12' (52')

52.12' (52')

52.12' (52')

52.12' (52')

52.12' (52')

52.12' (52')

52.12' (52')

52.12' (52')

52.12' (52')

52.12' (52')

52.12' (52')

52.12' (52')

52.12' (52')

52.12' (52')

52.12' (52')

N 00°25'04" E 441.05'

20.00' (20')

52.12' (52')

52.12' (52')

52.12' (52')

52.12' (52')

52.12' (52')

52.12' (52')

52.12' (52')

52.12' (52')

52.12' (52')

52.12' (52')

52.12' (52')

52.12' (52')

52.12' (52')

52.12' (52')

52.12' (52')

52.12' (52')

52.12' (52')

52.12' (52')

52.12' (52')

52.12' (52')

52.12' (52')

N 00°25'04" E 441.05'

20.00' (20')

52.12' (52')

52.12' (52')

52.12' (52')

52.12' (52')

52.12' (52')

52.12' (52')

52.12' (52')

52.12' (52')

52.12' (52')

52.12' (52')

52.12' (52')

52.12' (52')

52.12' (52')

52.12' (52')

52.12' (52')

52.12' (52')

52.12' (52')

52.12' (52')

52.12' (52')

52.12' (52')

52.12' (52')

N 00°25'04" E 441.05'

20.00' (20')

52.12' (52')

52.12' (52')

52.12' (52')

52.12' (52')

52.12' (52')

52.12' (52')

52.12' (52')

52.12' (52')

52.12' (52')

52.12' (52')

52.12' (52')

52.12' (52')

52.12' (52')

52.12' (52')

52.12' (52')

52.12' (52')

52.12' (52')

52.12' (52')

52.12' (52')

52.12' (52')

52.12' (52')

N 00°25'04" E 441.05'

20.00' (20')

52.12' (52')

52.12' (52')

52.12' (52')

52.12' (52')

52.12' (52')

52.12' (52')

52.12' (52')</