

PLAT OF SURVEY

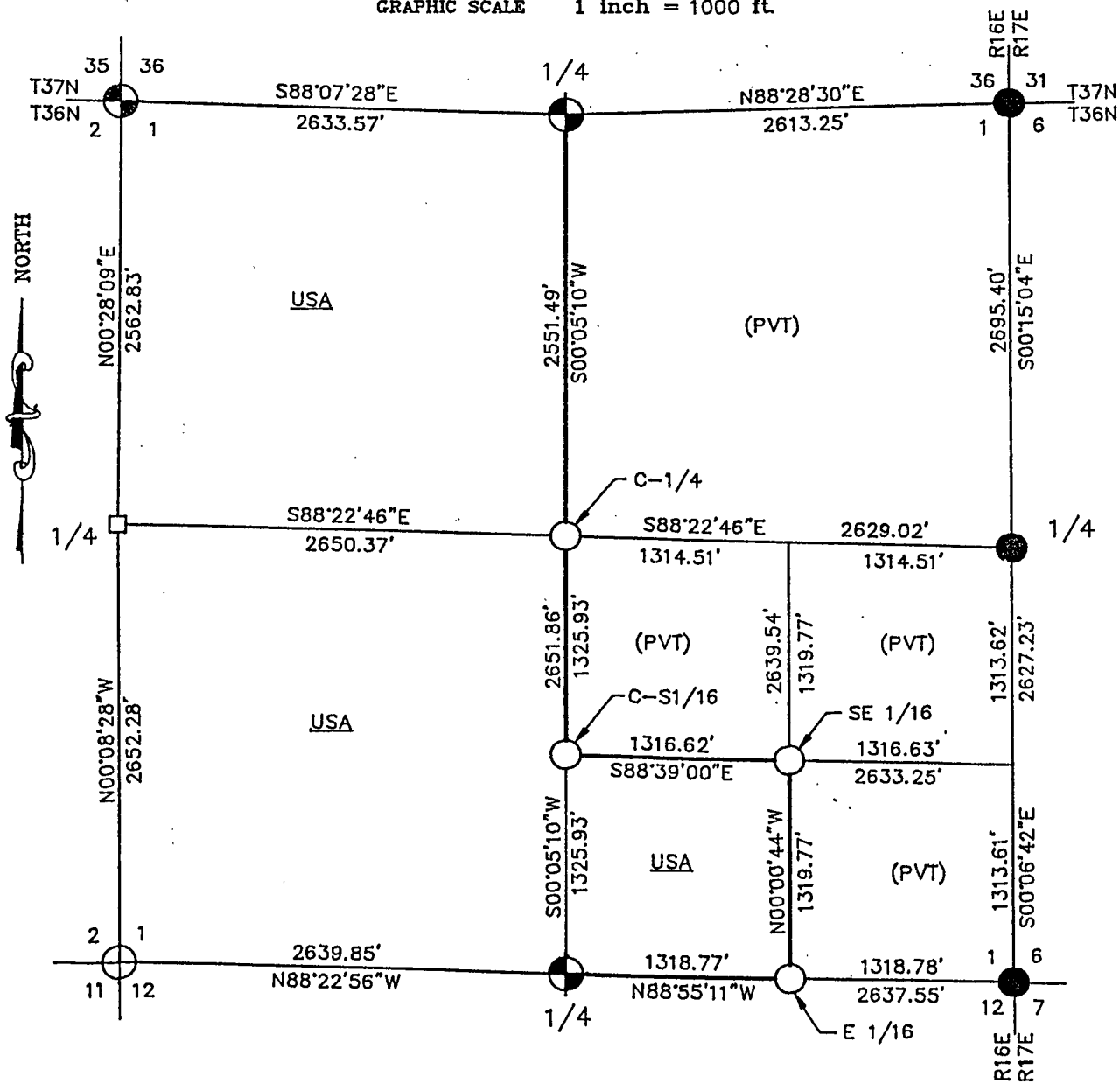
U.S. GOVERNMENT LANDS

BEING THE NW1/4; SW1/4 AND SW1/4-SE1/4 OF SECTION 1
TOWNSHIP 36 NORTH, RANGE 16 EAST,
FOURTH PRINCIPAL MERIDIAN;

FOREST COUNTY, WISCONSIN



GRAPHIC SCALE 1 inch = 1000 ft.



LEGEND

- ⊕ 2-1/2" X 36" ALUMINUM CAPPED PIPE - SET THIS SURVEY
- 1" x 60" ALUMINUM CAPPED MONUMENT - SET THIS SURVEY
- 5/8" X 24" CAPPED REBAR - SET THIS SURVEY
- ⊗ FOUND ALUMINUM CAPPED PIPE
- FOUND IRON PIPE WITH BRASS CAP
- BOUNDARY LINE MARKED TO FOREST SERVICE STANDARDS

Stock No. 26273

Sheet 2 of 4

SECTION 1, T36N-R16E
SURVEY NOTES

This survey was made by Coleman Engineering Company for the U.S. Department of Agriculture-Forest Service under Contract No. 53-56A6-1-00490 for the purpose of restoring and establishing corners on the perimeter of Section 1, for establishing subdivisional corners within Section 1, and for locating and marking the boundaries of U.S. Government lands along the perimeter and within Section 1, Township 36 North, Range 16 East, Fourth Principal Meridian, Forest County, State of Wisconsin.

The U.S. Government acquired ownership within Section 1 in 1935 and 1969.

The original township line and subdivision surveys of T36N-R16E were completed in September, 1857, and July, 1858, respectively.

The corner positions recovered, restored and established by this survey are marked by the monument described in the map legend.

The corner positions established were located to a minimum accuracy of 1 part in 5000.

The bearings between corner positions are true bearings as determined by solar (hour-angle) observations.

The field notes of the survey and a copy of this plat are on file in the Forest Supervisor's office in Rhinelander, Wisconsin.

CORNERS RECOVERED OR RESTORED

1. Standard Corner Common to Sections 35 and 36, T37N-R16E, and Sections 1 and 2, T36N-R16E
Corner position monumented by N.A. Harrison, RLS 1394. Certificate on file in Forest County - Document No. 119057.
2. Standard Quarter Corner Common to Section 36, T37N-R16E, and Section 1, T36N-R16E
Corner position monumented by A.D. Harrison, RLS 1651. Certificate on file in Forest County - Document No. 140859.
3. Standard Corner Common to Townships 36 and 37 North, and Ranges 16 and 17 East
Corner position monumented by Gould and Hammes in 1937 as recovered by A.D. Harrison, RLS 1651, in 1984. Certificate on file in Forest County - Document No. 127219.
4. Standard Quarter Corner Common to Section 1, T36N-R16E, and Section 6, T36N-R17E
Corner position monumented by Gould and Hammes in 1937, as recovered by A.D. Harrison, RLS 1651, in 1984. Certificate on file in Forest County - Document No. 127220.
5. Standard Corner Common to Sections 1 and 12, T36N-R16E, and Sections 6 and 7, T36N-R17E
Corner position monumented by Gould and Hammes in 1937 as recovered by A.D. Harrison, RLS 1651, in 1984. Certificate on file in Forest County - Document No. 127221.
6. Quarter Corner Common to Sections 1 and 12
Corner position monumented by M.E. Stefan, RLS 1558. Certificate on file in Forest County - Document No. 124220.

Stock No. 26273

Sheet 3 of 4

7. Section Corner Common to Sections 1, 2, 11 and 12

Corner position recovered as found 1" x 12" iron bolt (buried) with 1-1/2" squared head, presumed set by prior unknown surveyor. Position was accepted as most probable location of true corner.

Established Corner References:

Sugar	6"	N57°E	25.55 Feet
Sugar	9"	S38°E	40.82 Feet
Sugar	12"	S65°W	17.16 Feet
Sugar	8"	N64°W	52.31 Feet
Steel Sign Post		Northwest	11.52 Feet

8. Quarter Corner Common to sections 1 and 2

Restored corner position at intersection of centerline of Engelking Road/Forest Road 2371 (north-south) and existing fenceline to west. No other record evidence was found; position was accepted as most probable location of original corner and known monument of 1930.

Established Corner References:

Sugar	9"	N64°E	30.16 Feet
Sugar	9"	S65°E	36.37 Feet
Sugar	9"	S40°W	56.05 Feet
Basswood	14"	N29°W	37.70 Feet
1" x 36" Capped Aluminum Monument with "Witness Corner" Inscription		West	33.00 Feet

CORNERS ESTABLISHED1. Center Quarter Corner of Section 1

Established corner position at the intersection of straight lines between opposing quarter corners on the perimeter of Section 1.

Established Corner References:

Cedar	7"	N32°E	15.30 Feet
Cedar	5"	N50°W	2.57 Feet
Steel Sign Post		North	1.71 Feet

2. Center-South Sixteenth (1/16) Corner of Section 1

Established corner position at the midpoint of a straight line between the Center and South Quarter corners of Section 1.

Established Corner References:

B. Spruce	7"	N58°E	5.83 Feet
Cedar	12"	S03°W	7.12 Feet
Steel Sign Post		Southwest	2.70 Feet

3. Southeast Sixteenth (1/16) Corner of Section 1

Established corner position at the intersection of the south and east 1/16 lines of Section 1.

Established Corner References:

Cedar	8"	S11°W	30.65 Feet
Aspen	10"	N89°E	20.24 Feet
Steel Sign Post		Southwest	1.45 Feet

Stock No. 26273

Sheet 4 of 4

4. East Sixteenth (1/16) Corner Common to Sections 1 and 12
 Established corner position at the midpoint of a straight line between the Southeast corner and South Quarter corner of Section 1.
 Established Corner References:

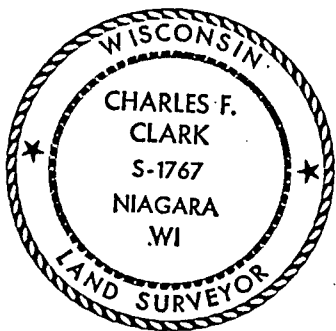
Cedar	8"	S67°W	22.41 Feet
Cedar	12"	N17°W	13.30 Feet
Steel Sign Post		Northwest	1.47 Feet

SURVEYOR'S AFFIDAVIT

State of Wisconsin)
) S.S.
 County of Forest)

I, Charles F. Clark, Land Surveyor for Coleman Engineering Company and a registered surveyor in the State of Wisconsin, hereby certify that this survey of Section 1, Township 36 North, Range 16 East, Fourth Principal Meridian, State of Wisconsin, was performed under my direct responsible supervision.

The plat map and the notes herewith are a correct representation of the land surveyed and divided. I have surveyed and subdivided said section in accordance with the rules for survey of the public lands and with the statutes of the State of Wisconsin.



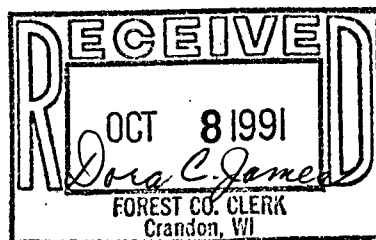
Charles F. Clark 9/4/1991

Charles F. Clark
 Coleman Engineering Company
 R.L.S., State of Wisconsin
 License No. S-1767

Plat ready for filing:

Acting *Darrell E. Richards*
 District Ranger

Date of Survey: 1991



PLAT OF SURVEY

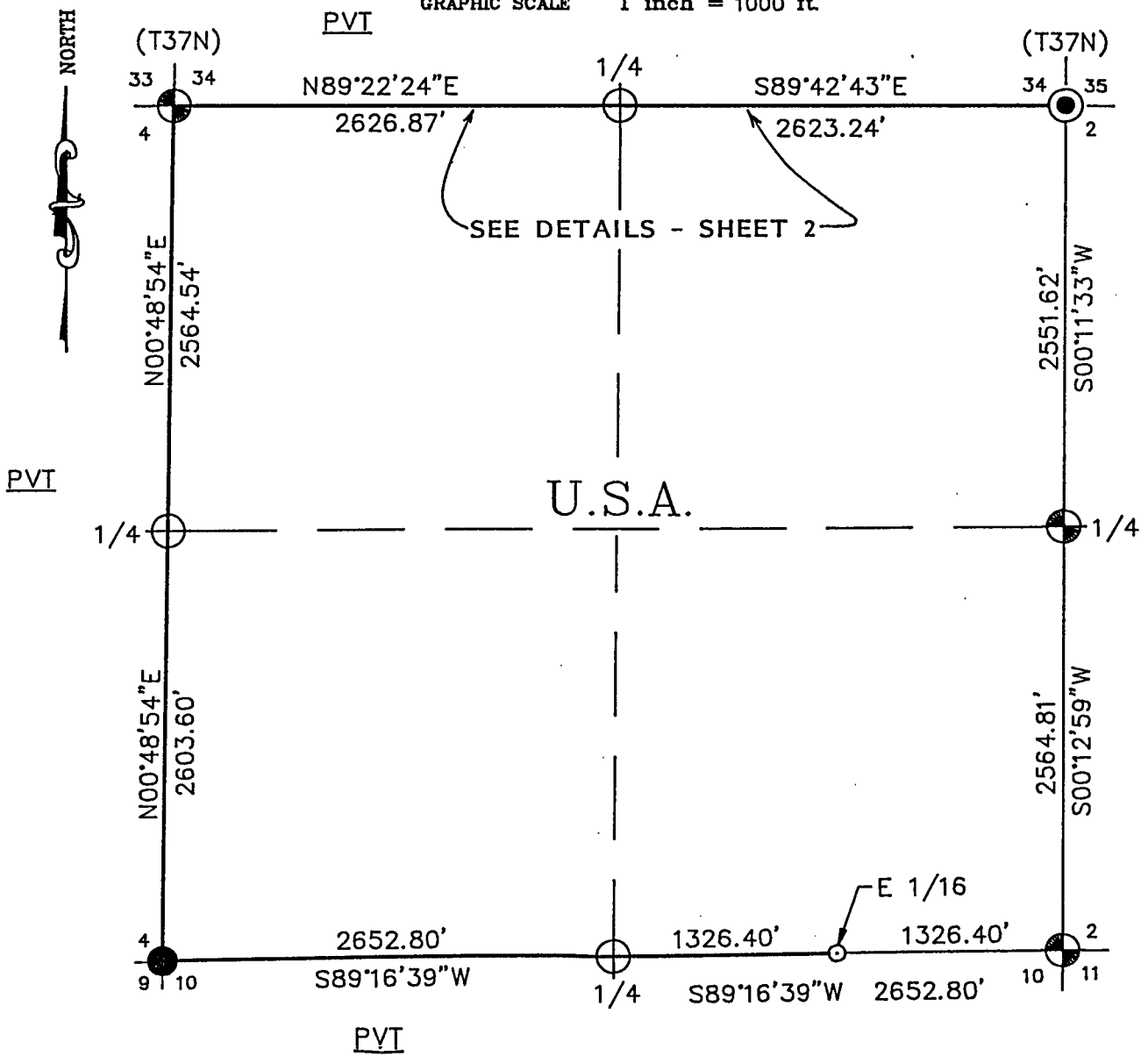
U.S. GOVERNMENT LANDS

BEING THE ENTIRETY OF SECTION 3,
TOWNSHIP 36 NORTH, RANGE 16 EAST,
FOURTH PRINCIPAL MERIDIAN;

FOREST COUNTY, WISCONSIN



GRAPHIC SCALE 1 inch = 1000 ft.



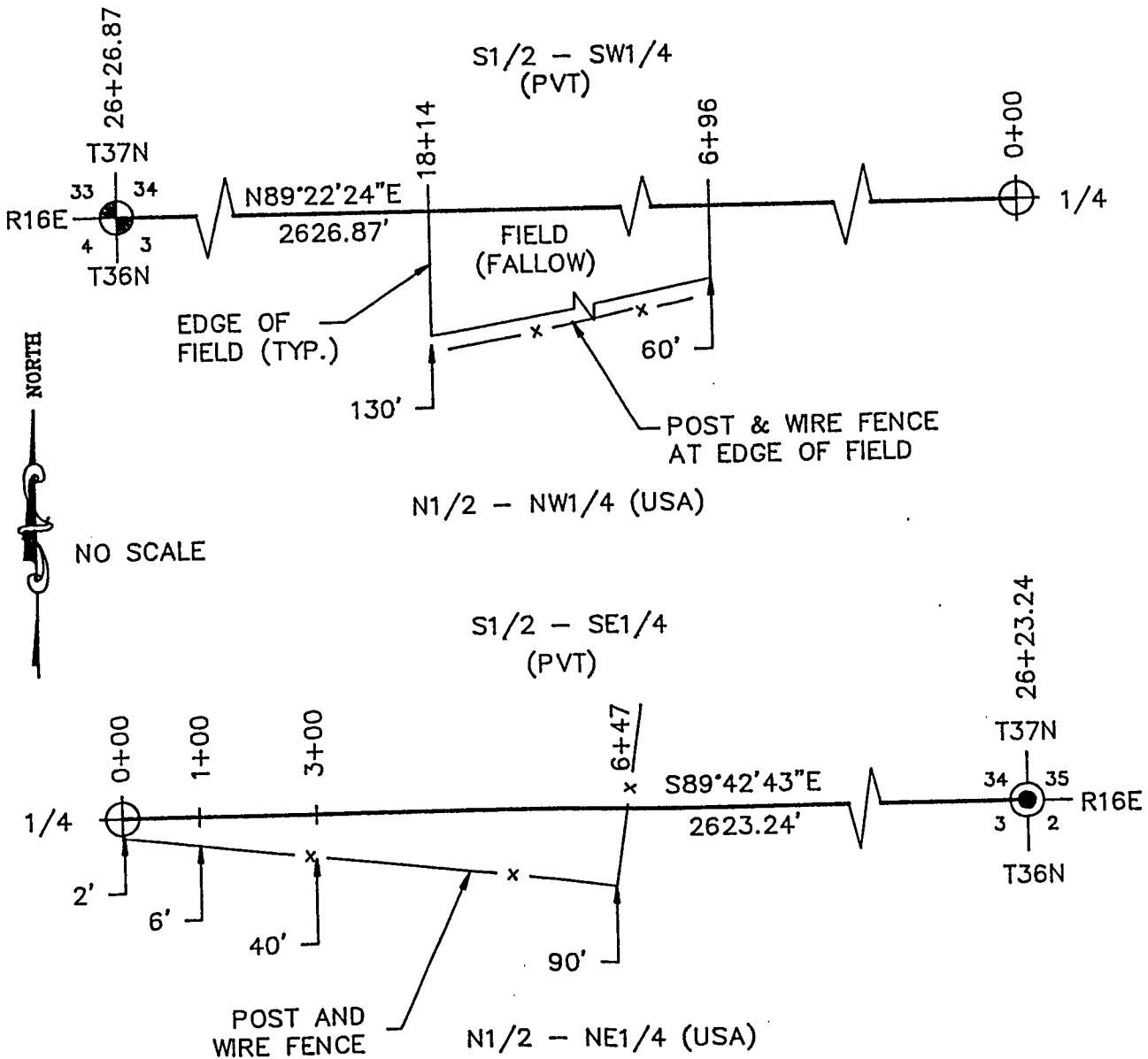
LEGEND

- ⊙ 2-1/2" X 120" ALUMINUM CAPPED PIPE - SET THIS SURVEY
- ⊕ 2-1/2" X 36" ALUMINUM CAPPED PIPE - SET THIS SURVEY
- 1" X 36" ALUMINUM CAPPED MONUMENT - SET THIS SURVEY
- ⊗ FOUND ALUMINUM CAPPED PIPE
- FOUND IRON PIPE WITH BRASS CAP
- BOUNDARY LINE MARKED TO FOREST SERVICE STANDARDS

SUPPLEMENTAL PLAT OF SURVEY

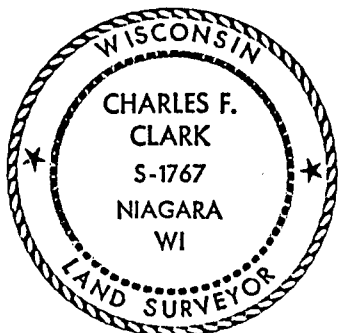
APPARENT ENCROACHMENTS UPON U.S. GOVERNMENT LANDS

N1/2-N1/2 SECTION 3, T36N-R16E,
4TH PRINCIPAL MERIDIAN
FOREST COUNTY, WISCONSIN



(SEE "PLAT OF SURVEY - U.S. GOVERNMENT LANDS" IN SECTION 3, T36N-R16E,
FOR CORNER MONUMENTATION AND BOUNDARY INFORMATION) SHEET 1 OF 5

I HEREBY CERTIFY THAT I HAVE SURVEYED
AND MAPPED THE LINES SHOWN HEREON
AND THAT THIS SURVEY IS CORRECT TO THE
BEST OF MY KNOWLEDGE AND BELIEF.



Charles F. Clark 9/6/1991
CHARLES F. CLARK, RLS
COLEMAN ENGINEERING COMPANY
IRON MOUNTAIN, MICHIGAN 49801

Stock No. 26273

Sheet 3 of 5

SECTION 3, T36N-R16E
SURVEY NOTES

This survey was made by Coleman Engineering Company for the U.S. Department of Agriculture-Forest Service under Contract No. 53-56A6-1-00490 for the purpose of restoring and establishing corners on the perimeter of Section 3 and for marking the boundaries of U.S. Government land coincident with the perimeter of Section 3, Township 36 North, Range 16 East, Fourth Principal Meridian, Forest County, State of Wisconsin.

The U.S. Government acquired ownership of Section 3 in 1935.

The original township line and subdivision surveys of T36N-R16E were completed in September, 1857, and July, 1858, respectively.

The corner positions recovered, restored and established by this survey are marked by the monument described in the map legend.

The corner positions established were located to a minimum accuracy of 1 part in 5000.

The bearings between corner positions are true bearings as determined by solar (hour-angle) observations.

The field notes of the survey and a copy of this plat are on file in the Forest Supervisor's office in Rhinelander, Wisconsin.

CORNERS RECOVERED OR RESTORED

1. Standard Corner Common to Sections 33 and 34, T37N-R16E and Sections 3 and 4, T36N-R16E

Corner position monumented by T. R. Arnott, RLS 887. Certificate on file in Forest County - Document No. 109430.

Established Additional Corner References:

Sugar	6"	N31°E	46.39 Feet
Sugar	6"	S58°E	47.05 Feet
Aspen	7"	S23°W	20.27 Feet
Sugar	3"	N58°W	27.73 Feet
Steel Sign Post		Southeast	1.19 Feet

2. Standard Quarter Corner Common to Section 34, T37N-R16E and Section 3, T36N-R16E

Corner position recovered, marked by a 2" O.D. flue pipe along an east-west barbwire fenceline (down). No other evidence was found, pipe was accepted as best remaining evidence of corner location.

Established Corner References:

B. Spruce	5"	S54°W	41.15 Feet
B. Spruce	6"	N83°E	10.70 Feet
B. Spruce	6"	S28°E	12.49 Feet
B. Spruce	5"	N34°E	52.26 Feet
Steel Sign Post		West	1.52 Feet

3. Standard Corner Common to Sections 34 and 35, T37N-R16E and Sections 2 and 3, T36N-R16E

Corner position recovered, marked by a 2" O.D. flue pipe similar to others recovered as previously established by Goodman Lumber Company. No other evidence was found, pipe was accepted as best remaining evidence of corner location.

Established Corner References:

B. Spruce	9"	S62°E	136.32 Feet
W. Birch	7"	S44°E	147.62 Feet

Stock No. 26273

Sheet 4 of 5

B. Spruce	4"	N65°W	106.28 Feet
Tamarack	8"	N19°W	99.90 Feet
Steel Sign Post		North	2.00 Feet

4. Quarter Corner Common to Sections 2 and 3
Corner position monumented by M.E. Stefan, RLS, 1558. Certificate on field in Forest County - Document No. 124217.
Established Additional Corner References:

Aspen	5"	N26°E	14.77 Feet
Sugar (Twin)	9"	S83°E	32.36 Feet

5. Section Corner Common to Sections 2, 3, 10 and 11
Corner position monumented by M.E. Stefan, RLS 1558. Certificate on file in Forest County - Document No. 124218.

6. Quarter Corner Common of Sections 3 and 10
Corner position restored at midpoint of straight line between Southeast and Southwest corners of Section 3.
Established Corner References:

Y. Birch	20"	N38°E	6.58 Feet
Cedar	10"	S31°E	53.56 Feet
Y. Birch	12"	S57°W	22.22 Feet
Y. Birch	14"	N34°W	48.61 Feet
Steel Sign Post		North	1.60 Feet

7. Section Corner Common to Sections 3, 4, 9 and 10
Corner position monumented by J.F. Resvick, RLS 802. Certificate on file in Forest County - Document No. 107007.
Established Additional Corner References:

Maple	6"	S42°W	54.79 Feet
Hemlock	19"	N64°W	49.94 Feet

8. Quarter Corner Common to Sections 3 and 4
Restored corner on straight line between Northwest and Southwest corners of Section 3 at proportionate distances from respective corners.
Established Corner References:

Basswood	17"	S26°E	14.43 Feet
Sugar	17"	S68°W	22.56 Feet
Sugar	8"	N17°W	46.38 Feet
Sugar	4"	N62°E	19.17 Feet
Steel Sign Post		South	1.16 Feet

CORNERS ESTABLISHED

1. East Sixteenth (1/16) Corner Between Sections 3 and 10
Established corner position at midpoint of straight line between Southeast and South Quarter corners of Section 3.
Established Corner References:

Y. Birch	10"	N73°E	13.27 Feet
Y. Birch (Triple)	20"	S16°E	20.79 Feet
Sugar	5"	S64°W	22.74 Feet
Steel Sign Post		Northeast	1.30 Feet

