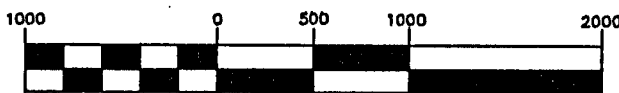


# PLAT OF SURVEY

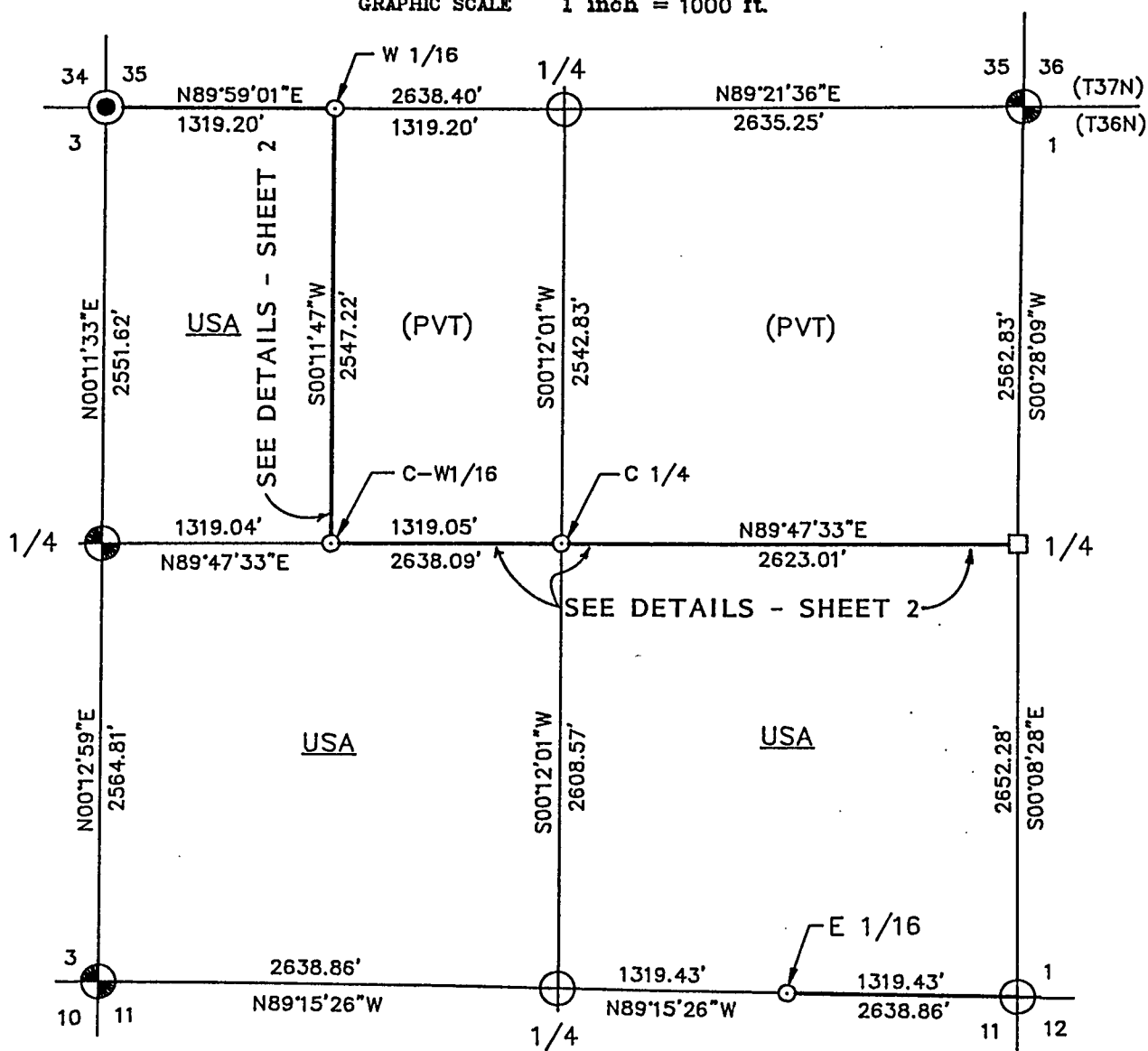
## U.S. GOVERNMENT LANDS

BEING THE W 1/2-NW 1/4; THE SE 1/4;  
AND THE SW 1/4 OF SECTION 2  
TOWNSHIP 36 NORTH, RANGE 16 EAST,  
FOURTH PRINCIPAL MERIDIAN

## FOREST COUNTY, WISCONSIN



GRAPHIC SCALE 1 inch = 1000 ft.



### LEGEND

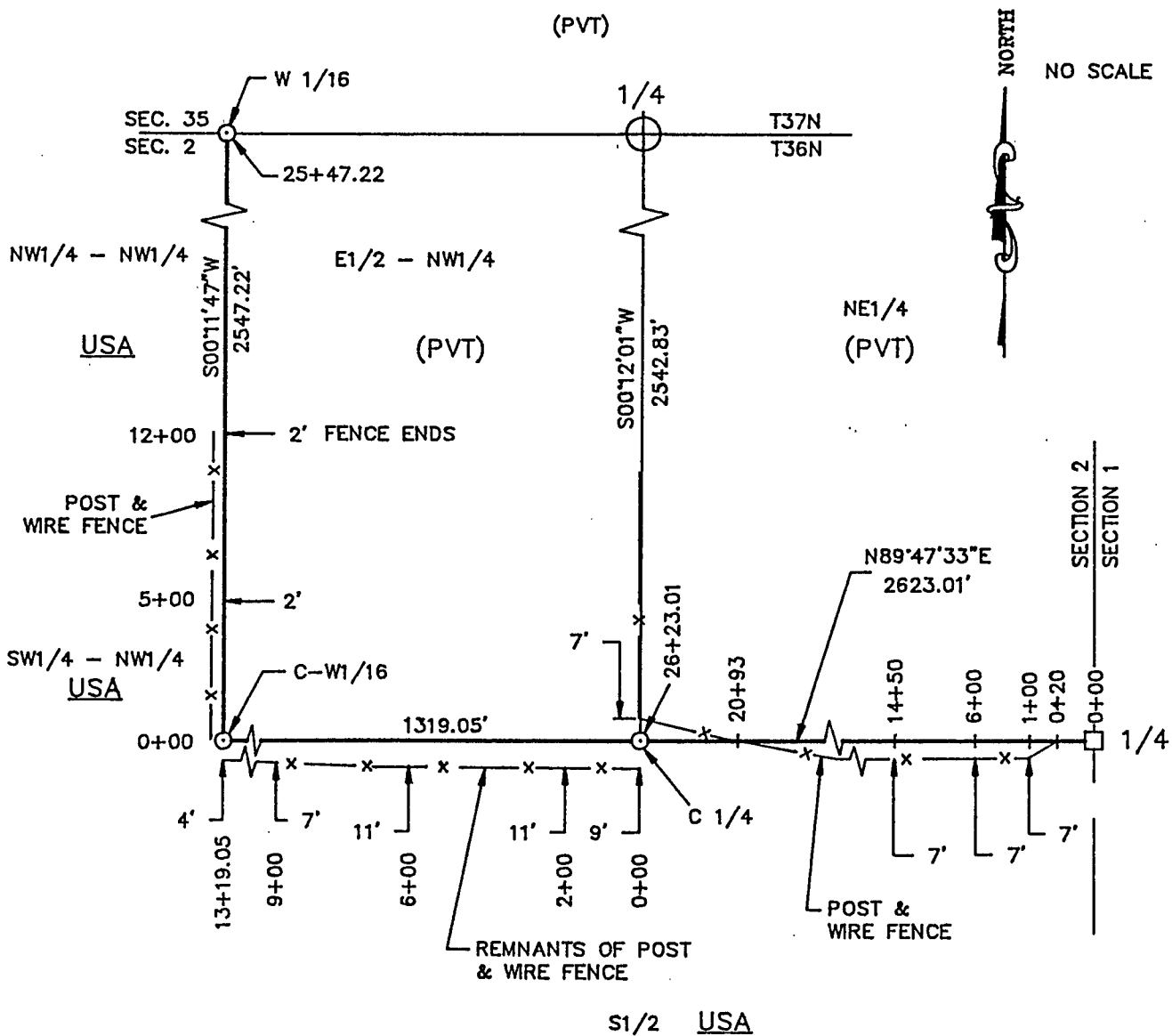
- ⊙ 2-1/2" X 120" ALUMINUM CAPPED PIPE - SET THIS SURVEY
- ⊕ 2-1/2" X 36" ALUMINUM CAPPED PIPE - SET THIS SURVEY
- 1" X 36" ALUMINUM CAPPED MONUMENT - SET THIS SURVEY
- ⊗ FOUND ALUMINUM CAPPED PIPE
- 5/8" X 24" CAPPED REBAR - SET THIS SURVEY
- BOUNDARY LINE MARKED TO FOREST SERVICE STANDARDS

# SUPPLEMENTAL PLAT OF SURVEY APPARENT ENCROACHMENTS UPON U.S. GOVERNMENT LANDS

IN THE SW1/4-NW1/4 AND S1/2 OF SECTION 2,  
T30N - R16E, 4TH PRINCIPAL MERIDIAN

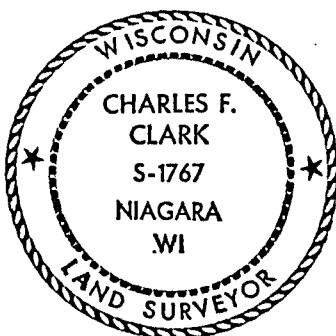
FOREST COUNTY, WISCONSIN

(PVT)



(SEE "PLAT OF SURVEY - U.S. GOVERNMENT LANDS" IN SECTION 2, T36N-R16E, FOR CORNER MONUMENTATION AND BOUNDARY INFORMATION) SHEET 1 OF 5

I HEREBY CERTIFY THAT I HAVE SURVEYED AND MAPPED THE LINES SHOWN HEREON AND THAT THIS SURVEY IS CORRECT TO THE BEST OF MY KNOWLEDGE AND BELIEF.



*Charles F. Clark* 9/6/1991

CHARLES F. CLARK, RLS  
COLEMAN ENGINEERING COMPANY  
IRON MOUNTAIN, MICHIGAN 49801

Stock No. 26273

Sheet 3 of 5

SECTION 2, T36N-R16E  
SURVEY NOTES

This survey was made by Coleman Engineering Company for the U.S. Department of Agriculture-Forest Service under Contract No. 53-56A6-1-00490 for the purpose of restoring and establishing corners on the perimeter of Section 2, for establishing subdivisional corners within Section 2, and for locating and marking the boundaries of U.S. Government lands along the perimeter and within Section 2, Township 36 North, Range 16 East, Fourth Principal Meridian, Forest County, State of Wisconsin.

The U.S. Government acquired ownership within Section 2 in 1935.

The original township line and subdivision surveys of T36N-R16E were completed in September, 1857, and July, 1858, respectively.

The corner positions recovered, restored and established by this survey are marked by the monument described in the map legend.

The corner positions established were located to a minimum accuracy of 1 part in 5000.

The bearings between corner positions are true bearings as determined by solar (hour-angle) observations.

The field notes of the survey and a copy of this plat are on file in the Forest Supervisor's office in Rhinelander, Wisconsin.

CORNERS RECOVERED OR RESTORED

1. Standard Corner Common to Sections 34 and 35, T37N-R16E and Sections 2 and 3, T36N-R16E

Corner position was restored, marked by a 2" O.D. flue pipe similar to others recovered as previously established by Goodman Lumber Company. No other evidence was found, pipe was accepted as best remaining evidence of corner location. Established Corner References:

B. Spruce	9"	S62°E	136.32 Feet
W. Birch	7"	S44°E	147.62 Feet
B. Spruce	4"	N65°W	106.28 Feet
Tamarack	8"	N19°W	99.90 Feet
Steel Sign Post		North	2.00 Feet

2. Standard Quarter Corner Common to Section 35, T37N-R16E and Section 2, T36N-R16E

Corner position was restored at the intersection of the centerline of LaChapell Lane (east) and an existing fenceline to the south. No other record evidence was found; position was accepted as most probable location of original corner and known monument of 1934.

Established Corner References:

Sugar	8"	N21°E	31.87 Feet
Sugar	6"	N50°E	33.12 Feet
Sugar	7"	S32°E	35.48 Feet
Sugar	7"	S84°W	21.57 Feet
Steel Sign Post		West	2.11 Feet

3. Standard Corner Common to Sections 35 and 36, T37N-R16E, and Sections 1 and 2, T36N-R16E

Corner position monumented by N.A. Harrison, RLS 1394. Certificate on field in Forest County - Document No. 119057.

Stock No. 26273

Sheet 4 of 5

4. Quarter Corner Common to Sections 1 and 2

Restored corner position at intersection of centerline of Engelking Road/Forest Road 2371 (north-south) and existing fenceline to west. No other record evidence was found; position was accepted as most probable location of original corner and known monument of 1930.

Established Corner References:

Sugar	9"	N64°E	30.16 Feet
Sugar	9"	S65°E	36.37 Feet
Sugar	9"	S40°W	56.05 Feet
Basswood	14"	N29°W	37.70 Feet
1" x 36" Capped Aluminum Monument with "Witness Corner" Inscription		West	33.00 Feet

5. Section Corner Common to Sections 1, 2, 11 and 12

Corner position recovered as found 1" x 12" iron bolt (buried) with 1-1/2" squared head, presumed set by prior unknown surveyor. Position was accepted as most probable location of true corner.

Established Corner References:

Sugar	6"	N57°E	25.55 Feet
Sugar	9"	S38°E	40.82 Feet
Sugar	12"	S65°W	17.16 Feet
Sugar	8"	N64°W	52.31 Feet
Steel Sign Post		Northwest	11.52 Feet

6. Quarter Corner Common to Sections 2 and 11

Restored corner position at midpoint of straight line between Southeast and Southwest section corners.

Established Corner References:

Sugar	8"	N40°E	16.18 Feet
Basswood	5"	S61°E	26.69 Feet
Aspen	8"	S41°W	18.39 Feet
Aspen	6"	N38°W	10.09 Feet
Steel Sign Post		Southwest	1.15 Feet

7. Section Corner Common to Sections 2, 3, 10 and 11

Corner position monumented by M.E. Stefan, RLS 1558. Certificate on file in Forest County - Document No. 124218.

8. Quarter Corner Common to Sections 2 and 3

Corner position monumented by M.E. Stefan, RLS, 1558. Certificate on field in Forest County - Document No. 124217.

Established Additional Corner References:

Aspen	5"	N26°E	14.77 Feet
Sugar (Twin)	9"	S83°E	32.36 Feet

CORNERS ESTABLISHED1. West Sixteenth (1/16) Corner Common to Section 35, T37N-R16E, and Section 2, T36N-R16E

Established corner position at midpoint of straight line between Northwest corner and North Quarter corner of Section 2.

Established Corner References:

Ash (Twin)	9"	N03°E	29.21 Feet
Maple	9"	S66°E	12.49 Feet
Maple (Twin)	6"	S78°W	9.97 Feet
Steel Sign Post		Southwest	1.63 Feet

Stock No. 26273

Sheet 5 of 5

2. Center-West Sixteenth (1/16) Corner Section 2

Established corner position at midpoint of straight line between West and Center Quarter corners of Section 2.

Established Corner References:

Sugar	8"	S40°E	24.74 Feet
W. Birch	4"	N62°E	25.78 Feet
Steel Sign Post		Southwest	1.69 Feet

3. Center Quarter Corner Section 2

Established corner position at intersection of straight lines between opposing quarter corners on the perimeter of Section 2.

Established Corner References:

Sugar	10"	S50°E	17.50 Feet
Sugar	5"	N85°E	19.05 Feet
Steel Sign Post		West	1.58 Feet

4. East Sixteenth (1/16) Corner Common to Sections 2 and 11

Established corner position at the midpoint of the straight line between the Southeast and South Quarter corners of Section 2.

Established Corner References:

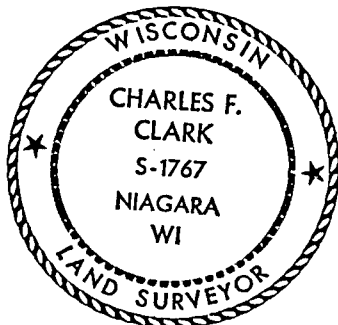
Maple	8"	N21°W	26.78 Feet
Maple	10"	S54°W	19.17 Feet
Steel Sign Post		Northwest	2.04 Feet

SURVEYOR'S AFFIDAVIT

State of Wisconsin )  
 ) S.S.  
 County of Forest )

I, Charles F. Clark, Land Surveyor for Coleman Engineering Company and a registered surveyor in the State of Wisconsin, hereby certify that this survey of Section 2, Township 36 North, Range 16 East, Fourth Principal Meridian, State of Wisconsin, was performed under my direct responsible supervision.

The plat map and the notes herewith are a correct representation of the land surveyed and divided. I have surveyed and subdivided said section in accordance with the rules for survey of the public lands and with the statutes of the State of Wisconsin.



Charles F. Clark 9/4/1991  
 Charles F. Clark  
 Coleman Engineering Company  
 R.L.S., State of Wisconsin  
 License No. S-1767

Plat ready for filing:

Darrell E. Richards  
 Acting District Ranger

Date of Survey: 1991

