

PLAT OF SURVEY

SHEET 1 OF 3

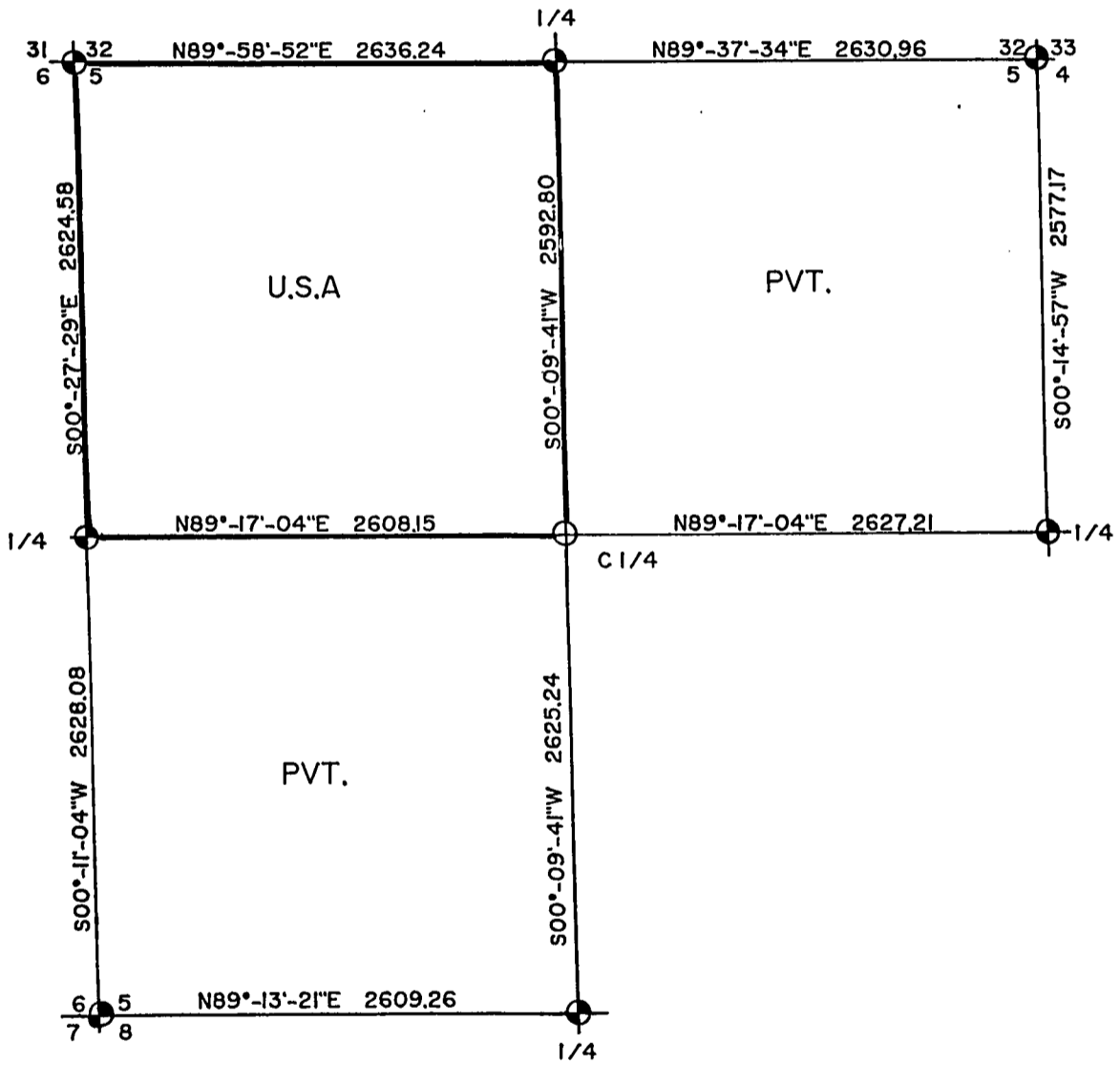
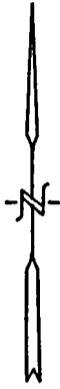
U.S. GOVERNMENT LAND

BEING THE NW 1/4, SECTION 5,
TOWNSHIP 36 NORTH, RANGE 16 EAST,
FOURTH PRINCIPAL MERIDIAN



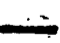
FOREST COUNTY, WISCONSIN



GRAPHIC SCALE: 1 INCH = 1000 FT.



LEGEND

-  1" X 36" ALUMINUM CAPPED MONUMENT - SET THIS SURVEY
-  FOUND ALUMINUM CAPPED PIPE
-  BOUNDARY LINE MARKED TO FOREST SERVICE STANDARDS

**SECTION 5, T36-R16E
SURVEY NOTES**

This survey was made by Coleman Engineering Company for the U.S. Department of Agriculture-Forest Service under Contract No. 53-56A6-2-00788 for the purpose of restoring and establishing corners on the perimeter of Section 5, for establishing subdivisional corners within Section 5, and for locating and marking the boundaries of U.S. Government lands along the perimeter and within Section 5, and that the survey is based on U.S.D.A. U.S. Forest Service survey control completed in 1993 for Section 5, Township 36 North, Range 16 East, Fourth Principal Meridian, Forest County, State of Wisconsin.

The U.S. Government acquired ownership within Section 5 in 1935.

The original township line and subdivision surveys of T36N-R16E were completed in 1857 and 1858, respectively.

The corner positions recovered, restored and established by this survey are marked by the monument described in the map legend.

The corner positions established were located to a minimum accuracy of 1 part in 5000.

The bearings between corner positions are true bearings as determined by solar (hour-angle) observations, provided by the U.S.D.A. - Forest Service.

The field notes of the survey and a copy of this plat are on file in the Forest Supervisor's office in Rhinelander, Wisconsin.

CORNERS RECOVERED OR RESTORED

1. Section corner common to Sections 31 and 32, T37N, R16E and Sections 5 and 6, T36N, R16E. Corner position monumented by Alan Harrison, RLS 1651. Certificate on file in Forest County - Document No. 127218.
2. Quarter corner common to Section 32, T37N, R16E and Section 5, T36N, R16E. Corner position monumented by Alan Harrison, RLS 1651. Certificate on file in Forest County - Document No. 147751.
3. Section corner common to Sections 32 and 33, T37N, R16E and Sections 5 and 4, T36N, R16E. Corner position monumented by Alan Harrison, RLS 1651. Certificate on file in Forest County - Document No. 147752.
4. Quarter corner common to Sections 4 and 5. Corner position monumented by Alan Harrison, RLS 1651. Certificate on file in Forest County - Document No. 143920.
5. Quarter corner common to Sections 5 and 8. Corner position monumented by Alan Harrison, RLS 1651. Certificate on file in Forest County - Document No. 143921.
6. Section corner common to Sections 5, 6, 7 and 8. Corner position monumented by Alan Harrison, RLS 1651. Corner certificate on file in Forest County - Document No. 147754.
7. Quarter corner common to Sections 5 and 6. Corner position monumented by Milo Stefan, RLS 1558, in 1981. Recovered by John R. Garske, RLS 1685, in 1993.

Corner References:

Cedar	11"	N35°W	13.80 feet
Hemlock	9"	N85°E	32.65 feet
Cedar	8"	S10°W	16.07 feet
Steel Sign Post		Northeast	1.75 feet

CORNERS ESTABLISHED

1. Center quarter corner of Section 5. Established corner position at the intersection of the North-South and East-West one-quarter lines of Section 5.

Established corner references:

Y. birch	9"	S81°W	18.06 feet
Sugar maple	7"	N36°E	57.67 feet
Sugar maple	9"	S82°E	36.91 feet
2" O.D. iron pipe (found)		S05°E	36.04 feet
Steel Sign Post		North	1.41 feet

SURVEYOR'S AFFIDAVIT

State of Wisconsin)
) ss.
 County of Forest)

I, John R. Garske, Land Surveyor for Coleman Engineering Company and a registered surveyor in the State of Wisconsin, hereby certify that this survey of Section 5, Township 36 North, Range 16 East, Fourth Principal Meridian, State of Wisconsin, was performed under my direct responsible supervision.

The plat map and the notes herewith are a correct representation of the land surveyed and divided. I have surveyed and subdivided said section in accordance with the rules for survey of the public lands and with the statutes of the State of Wisconsin.



John R. Garske

 John R. Garske
 Coleman Engineering Company
 R.L.S., State of Wisconsin
 License No. S-1685

Plat ready for filing:

Sue Vap

 District Ranger

Date of Survey: 1993

