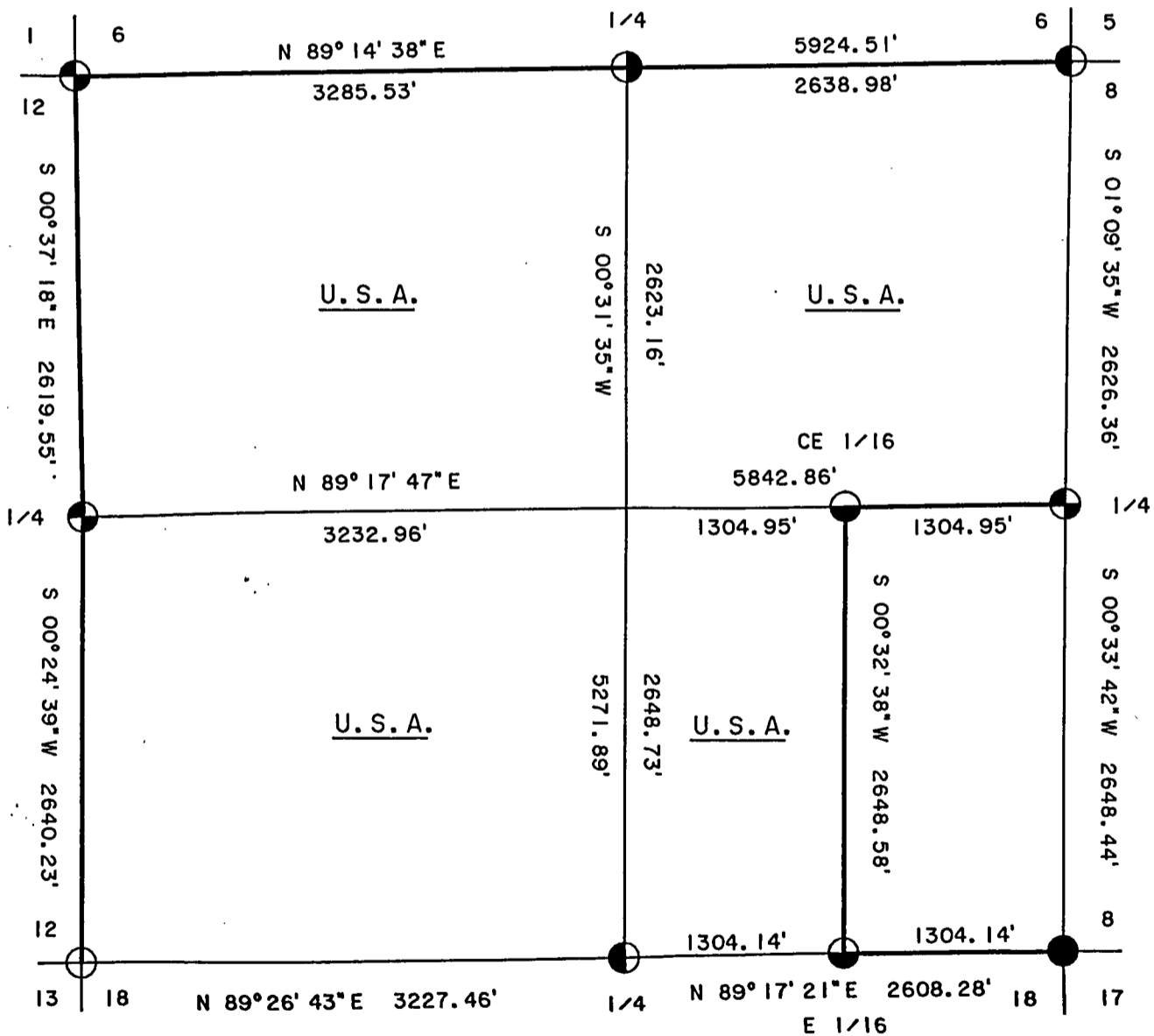
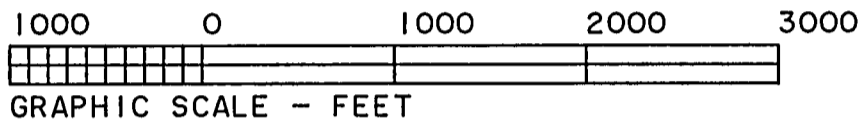
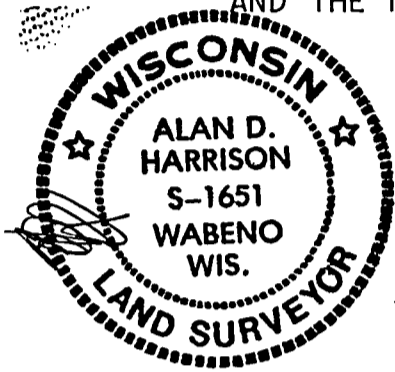


PLAT OF SURVEY U. S. GOVERNMENT LANDS

BEING THE N.E. 1/4; THE W. 1/2, S.E. 1/4; THE S.W. 1/4;
AND THE N.W. 1/4; SECTION 7, TOWNSHIP 36 NORTH, RANGE 16 EAST
FOURTH PRINCIPAL MERIDIAN,
FOREST COUNTY, WISCONSIN.



LEGEND

- FOREST COUNTY SURVEY MONUMENT, FOUND IN PLACE.
- 2" BRASS CAPPED MONUMENT, FOUND IN PLACE.
- ◐ 2 1/2" ALUMINUM MONUMENT, FOUND IN PLACE.
- ◑ 2 1/2" X 36" ALUMINUM MONUMENT, SET THIS SURVEY.
- ◒ 2 1/2" X 60" ALUMINUM MONUMENT, SET THIS SURVEY.
- ◓ 1" X 36" ALUMINUM MONUMENT, SET THIS SURVEY.
- MARKED PROPERTY BOUNDARY OF U. S. GOVERNMENT LANDS.

SURVEY NOTES

This survey was made by the U.S. Department of Agriculture, Forest Service, for the purpose of restoring and establishing corners on the perimeter of Section 7 for establishing subdivisional corners within section 7 and for locating and marking the boundaries of U.S. Government land on their perimeter and within Section 7 Township 36 North, Range 16 East, 4th Principal Meridian, Forest County Wisconsin.

The U.S. Government lands in this section were acquired in 1935.

The original government subdivision survey of this township was made in 1858. The township lines were surveyed in 1857 by Artemas Curtis.

The corner positions recovered, restored and established by this survey are marked by the monument described in the map legend.

The corner positions established were located to an accuracy of one part in 5000.

The bearings between corner positions are true bearings as determined by solar observations.

The field notes of this survey and a copy of this plat are on file in the Forest Supervisor's Office in Rhinelander, Wisconsin.

CORNERS RECOVERED OR RESTORED

1. Corner Common to Sections 1, 6, 7 and 12 R15 - 16E.
Corner found monumented by Kim Pritzlaff, R.L.S. Certificate on file in Forest County.
2. Corner Common to Sections 5, 6, 7 and 8.
Corner found monumented by Alan Harrison, R.L.S. Certificate on file in Forest County.
3. Corner Common to Sections 7, 8, 17 and 18.
Corner found monumented by William Cochrane, R.L.S. Certificate on file in Forest County.
Added new Corner Reference:

Black Spruce	3"	S.35°E.	5.45 feet
--------------	----	---------	-----------

4. Corner Common to Sections 7, 12, 13 and 18 R15 - 16E.
Corner found monumented by Phillip T. Hansen, R.L.S. Certificate on file in Forest County.
5. Quarter Corner Common to Sections 7 and 12 R15 - 16E.
Corner found monumented by Kim Pritzlaff, R.L.S. Certificate on file in Forest County.
6. Quarter Corner Common to Sections 7 and 8.
Corner found monumented by Milo Stefan, R.L.S. Certificate on file in Forest County.
7. Quarter Corner Common to Sections 6 and 7.
Corner restored at proportionate distance and on line between the Northwest and Northeast Section Corners of Section 7.
Corner References:

Spruce	4"	N.01°E.	25.77 feet
Spruce	8"	N.76°E.	22.61 feet
Black Ash	5"	N.55°W.	14.04 feet
Steel Sign Post		West	0.94 feet

8. Quarter Corner Common to Sections 7 and 18.

Corner restored at double distance from the Southeast Section Corner through an existing flue pipe at the East One-Sixteenth which was set by Goodman Co.
Corner References:

Sugar Maple	10"	S.58°E.	13.00 feet
Sugar Maple	9"	S.38°W.	27.15 feet
Sugar Maple	9"	N.30°W.	24.86 feet
Steel Sign Post		South	0.90 feet

9. East One-Sixteenth Corner Common to Sections 7 and 18.

Corner found marked by 1½ inch diameter flue pipe as set by Goodman Co.
New Corner References:

Sugar Maple	7"	West	8.93 feet
Sugar Maple	5"	N.12°W.	8.66 feet
Steel Sign Post		Southwest	0.94 feet

CORNERS ESTABLISHED

1. Center - East One-Sixteenth of Section 7.

Corner established at mid-point and on line between the Center Quarter corner and East Quarter Corner of Section 7.
Corner References:

Sugar Maple	5"	S.36°W.	15.95 feet
Sugar Maple	7"	N.15°W.	18.15 feet
Steel Sign Post		Northwest	1.41 feet

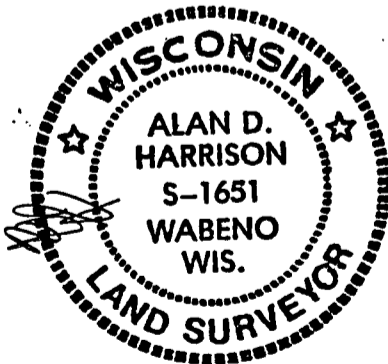
SURVEYOR'S AFFIDAVIT

State of Wisconsin]

County of Forest]

I, Alan D. Harrison, Land Surveyor, U.S.D.A. Forest Service and a Registered Land Surveyor in the State of Wisconsin, do hereby certify that I have surveyed and subdivided Section 7, Township 36 North, Range 16 East, Fourth Principal Meridian, State of Wisconsin.

The plat map and the notes herewith are a correct representation of the land surveyed and divided. I have surveyed and subdivided said section in accordance with the rules for survey of the public lands and with the statutes of the State of Wisconsin.



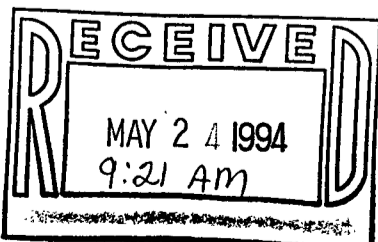
Alan D. Harrison

LAND SURVEYOR, U.S.D.A. Forest Service
R.L.S. Number S-1651
State of Wisconsin

Date of Survey: 1993

Plat Ready for Filing:

Chris Sprague
District Ranger



Sandra L. Peddo
Clerk/Bkpr