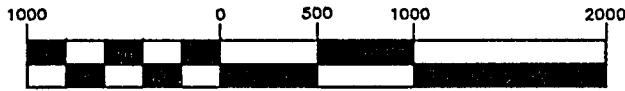


PLAT OF SURVEY

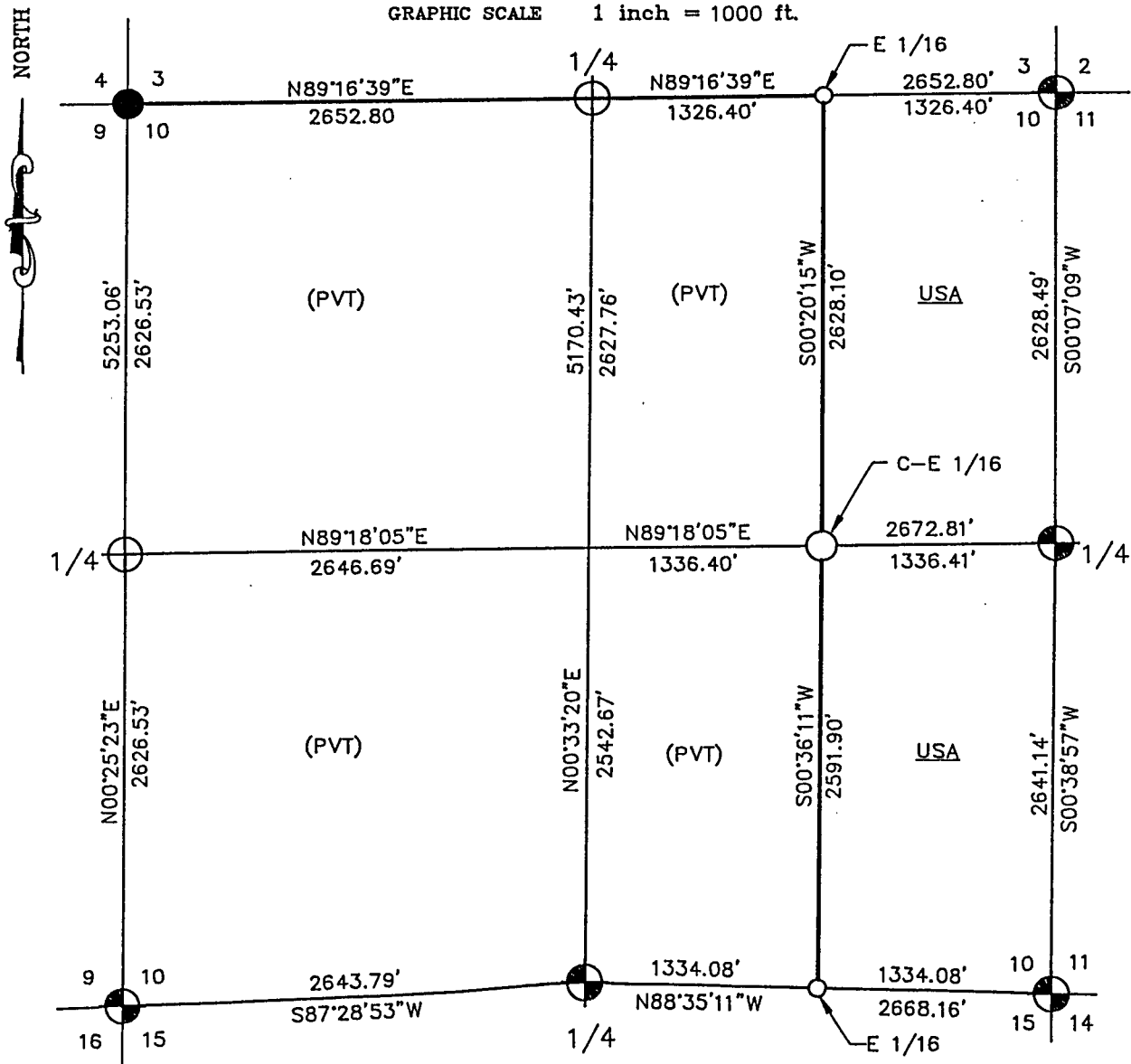
U.S. GOVERNMENT LANDS

BEING THE E1/2-NE1/4 AND E1/2-SE1/4 OF SECTION 10,
TOWNSHIP 36 NORTH, RANGE 16 EAST,
FOURTH PRINCIPAL MERIDIAN

FOREST COUNTY, WISCONSIN



GRAPHIC SCALE 1 inch = 1000 ft.



LEGEND

- ⊕ 2-1/2" X 36" ALUMINUM CAPPED PIPE - SET THIS SURVEY
- 1" X 36" ALUMINUM CAPPED MONUMENT - SET THIS SURVEY
- 1" X 60" ALUMINUM CAPPED MONUMENT - SET THIS SURVEY
- ⊕ FOUND ALUMINUM CAPPED PIPE
- FOUND IRON PIPE WITH BRASS CAP
- BOUNDARY LINE MARKED TO FOREST SERVICE STANDARDS

Stock No. 26273

Sheet 2 of 4

SECTION 10, T36N-R16E
SURVEY NOTES

This survey was made by Coleman Engineering Company for the U.S. Department of Agriculture-Forest Service under Contract No. 53-56A6-1-00490 for the purpose of restoring and establishing corners on the perimeter of Section 10, for establishing subdivisional corners within Section 10, and for locating and marking the boundaries of U.S. Government lands along the perimeter and within Section 10, Township 36 North, Range 16 East, Fourth Principal Meridian, Forest County, State of Wisconsin.

The U.S. Government acquired ownership within Section 10 in 1936.

The original Government subdivision survey of this township was completed in July, 1858.

The corner positions recovered, restored and established by this survey are marked by the monument described in the map legend.

The corner positions established were located to a minimum accuracy of 1 part in 5000.

The bearings between corner positions are true bearings as determined by solar (hour-angle) observations.

The field notes of the survey and a copy of this plat are on file in the Forest Supervisor's office in Rhinelander, Wisconsin.

CORNERS RECOVERED OR RESTORED

- Section Corner Common to sections 3, 4, 9 and 10
Corner position monumented by J.F. Resvick, RLS 802. Certificate on file in Forest County - Document No. 107007.
Established Additional Corner References:

Maple	6"	S42°W	54.79 Feet
Hemlock	19"	N64°W	49.94 Feet

- Quarter Corner Common to Sections 3 and 10
Corner position restored at midpoint of straight line between Southeast and Southwest corners of Section 10.
Established Corner References:

Y. Birch	20"	N38°E	6.58 Feet
Cedar	10"	S31°E	53.56 Feet
Y. Birch	12"	S57°W	22.22 Feet
Y. Birch	14"	N34°W	48.61 Feet
Steel Sign Post		North	1.60 Feet

- Section Corner Common to Sections 2, 3, 10 and 11
Corner position monumented by M.E. Stefan, RLS 1558. Certificate on file in Forest County - Document No. 124218.
- Quarter Corner Common to Sections 10 and 11
Corner position monumented by M.E. Stefan, RLS 1558. Certificate on file in Forest County - Document No. 124219.
- Section Corner Common to Sections 10, 11, 14 and 15
Corner position monumented by M.E. Stefan, RLS 1558. Certificate on file in Forest County - Document No. 124222.
- Quarter Corner Common to Sections 10 and 15
Corner position monumented by A.D. Harrison, RLS 1651. Certificate on file in Forest County - Document No. 140858.

Stock No. 26273

Sheet 3 of 4

7. Section Corner Common to Sections 9, 10, 15 and 16
Corner position monumented by A.D. Harrison, RLS 1651. Certificate on file in Forest County - Document No. 141027.
8. Quarter Corner Common to Sections 9 and 10
Restored corner position at the midpoint of the straight line between the Northwest and Southwest corners of Section 10.
Established Corner References:

Cedar	12"	N18°E	46.33 Feet
Hemlock	14"	S63°E	6.66 Feet
Y. Birch	16"	S47°W	15.75 Feet
Hemlock	12"	N42°W	16.68 Feet
Steel Sign Post		East	1.26 Feet

CORNERS ESTABLISHED

1. East Sixteenth (1/16) Corner Between Sections 3 and 10
Established corner position at midpoint of straight line between Northeast and North Quarter corners of Section 10.
Established Corner References:

Y. Birch	10"	N73°E	13.27 Feet
Y. Birch (Triple)	20"	S16°E	20.79 Feet
Sugar	5"	S64°W	22.74 Feet
Steel Sign Post		Northeast	1.30 Feet

2. Center-East Sixteenth (1/16) Corner of Section 10
Established corner position at midpoint of straight line between Center and East Quarter corners of Section 10.
Established Corner References:

Sugar	10"	N37°E	8.32 Feet
Sugar	8"	West	10.25 Feet
Steel Sign Post		East	1.29 Feet

3. East Sixteenth (1/16) Corner Common to Sections 10 and 15
Established corner position at midpoint of straight line between South Quarter corner and Southeast corner of Section 10.
Established Corner References:

Basswood	10"	S76°E	6.52 Feet
Sugar	8"	S57°W	12.05 Feet
Steel Sign Post		East	2.11 Feet

Stock No. 26273

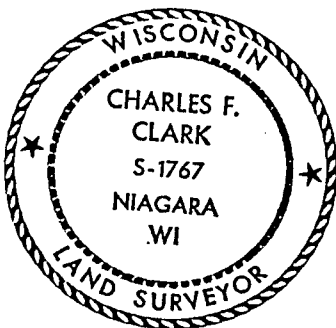
Sheet 4 of 4

SURVEYOR'S AFFIDAVIT

State of Wisconsin)
County of Forest) S.S.

I, Charles F. Clark, Land Surveyor for Coleman Engineering Company and a registered surveyor in the State of Wisconsin, hereby certify that this survey of Section 10, Township 36 North, Range 16 East, Fourth Principal Meridian, State of Wisconsin, was performed under my direct responsible supervision.

The plat map and the notes herewith are a correct representation of the land surveyed and divided. I have surveyed and subdivided said section in accordance with the rules for survey of the public lands and with the statutes of the State of Wisconsin.



Charles F. Clark 9/4/1991

Charles F. Clark
Coleman Engineering Company
R.L.S., State of Wisconsin
License No. S-1767

Plat ready for filing:

Acting Darrell E. Richards
District Ranger

Date of Survey: 1991

