

PLAT OF SURVEY

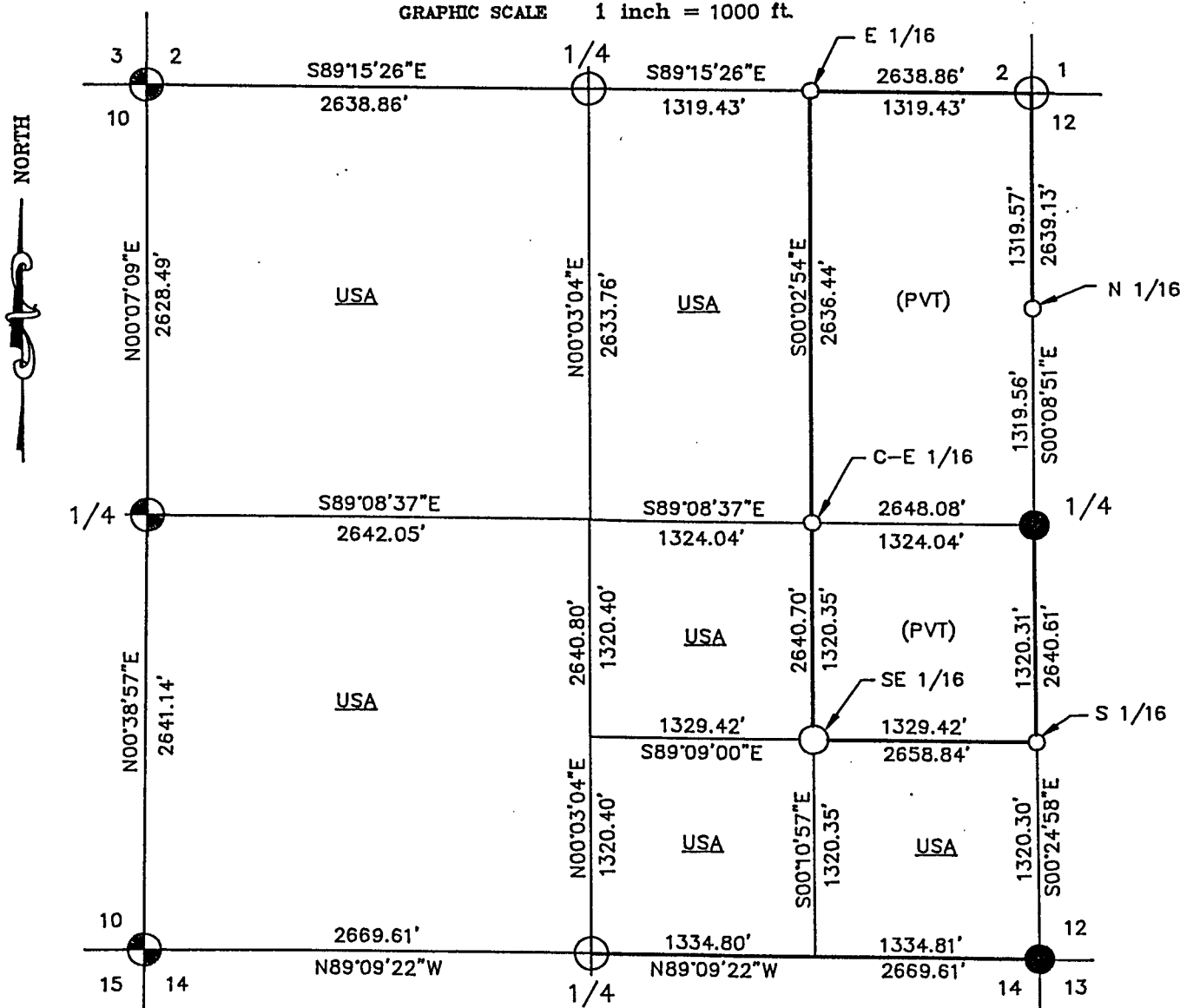
U.S. GOVERNMENT LANDS

BEING THE NW1/4; THE W1/2-NE1/4; THE W1/2-SE1/4;
THE SE1/4-SE1/4; AND THE SW1/4 OF SECTION 11
TOWNSHIP 36 NORTH, RANGE 16 EAST,
FOURTH PRINCIPAL MERIDIAN;

FOREST COUNTY, WISCONSIN



GRAPHIC SCALE 1 inch = 1000 ft.



LEGEND

- 2-1/2" X 36" ALUMINUM CAPPED PIPE - SET THIS SURVEY
- 1" X 60" ALUMINUM CAPPED MONUMENT - SET THIS SURVEY
- 1" X 36" ALUMINUM CAPPED MONUMENT - SET THIS SURVEY
- FOUND ALUMINUM CAPPED PIPE
- FOUND IRON PIPE WITH BRASS CAP
- BOUNDARY LINE MARKED TO FOREST SERVICE STANDARDS

Stock No. 26273

Sheet 2 of 4

SECTION 11, T36N-R16E
SURVEY NOTES

This survey was made by Coleman Engineering Company for the U.S. Department of Agriculture-Forest Service under Contract No. 53-56A6-1-00490 for the purpose of restoring and establishing corners on the perimeter of Section 11, for establishing subdivisional corners within Section 11, and for locating and marking the boundaries of U.S. Government lands along the perimeter and within Section 11, Township 36 North, Range 16 East, Fourth Principal Meridian, Forest County, State of Wisconsin.

The U.S. Government acquired ownership within Section 11 in 1935 and 1936.

The original Government subdivision survey of this township was completed in July, 1858.

The corner positions recovered, restored and established by this survey are marked by the monument described in the map legend.

The corner positions established were located to a minimum accuracy of 1 part in 5000.

The bearings between corner positions are true bearings as determined by solar (hour-angle) observations.

The field notes of the survey and a copy of this plat are on file in the Forest Supervisor's office in Rhinelander, Wisconsin.

CORNERS RECOVERED OR RESTORED

1. Section Corner Common to Sections 2, 3, 10 and 11
Corner position monumented by M. E. Stefan, RLS 1558. Certificate on file in Forest County - Document No. 124218.
2. Quarter Corner Common to Sections 2 and 11
Restored corner position at midpoint of straight line between Northeast and Northwest section corners.
Established Corner References:

Sugar	8"	N40°E	16.18 Feet
Basswood	5"	S61°E	26.69 Feet
Aspen	8"	S41°W	18.39 Feet
Aspen	6"	N38°W	10.09 Feet
Steel Sign Post			
3. Section Corner Common to Sections 1, 2, 11 and 12
Corner position recovered as found 1" x 12" iron bolt (buried) with 1-1/2" squared head, presumed set by prior unknown surveyor. Position was accepted as most probable location of true corner.
Established Corner References:

Sugar	6"	N57°E	25.55 Feet
Sugar	9"	S38°E	40.82 Feet
Sugar	12"	S65°W	17.16 Feet
Sugar	8"	N64°W	52.31 Feet
Steel Sign Post		Northwest	11.52 Feet
4. Quarter Corner Common to Sections 11 and 12
Corner position monumented by J. F. Resvick, RLS 802. Certificate on file in Forest County - Document No. 95887.
Established Additional Corner References:

Aspen	8"	N67°E	33.01 Feet
-------	----	-------	------------

(Continued on Sheet 3)

Stock No. 26273

Sheet 3 of 4

4. (Continued) Additional Corner References:

Sugar	4"	S65°E	21.15 Feet
Balsam	8"	S25°W	46.78 Feet
Steel Sign Post		Southeast	2.70 Feet

5. Section Corner Common to Sections 1, 2, 11 and 12

Corner position monumented by J. F. Resvick, RLS 802. Certificate on file in Forest County - Document No. 95888.

6. Quarter Corner Common to Sections 11 and 14

Restored corner position at the midpoint of the straight lines between the Southwest and Southeast corners of Section 11.

Established Corner References:

Basswood	10"	S41°E	17.54 Feet
Sugar	8"	S31°W	12.10 Feet
Sugar	10"	N89°W	18.50 Feet
Ash	12"	N06°W	9.62 Feet
Steel Sign Post		North	1.35 Feet

7. Section Corner Common to Sections 10, 11, 14 and 15

Corner position monumented by M.E. Stefan, RLS 1558. Certificate on file in Forest County - Document No. 124222.

8. Quarter Corner Common to Sections 10 and 11

Corner position monumented by M.E. Stefan, RLS 1558. Certificate on file in Forest County - Document No. 124219.

CORNERS ESTABLISHED1. East Sixteenth (1/16) Corner Common to Sections 2 and 11

Established corner position at the midpoint of the straight line between the Northeast and North Quarter corners of Section 11.

Established Corner References:

Maple	8"	N21°W	26.78 Feet
Maple	10"	S54°W	19.17 Feet
Steel Sign Post		Northwest	2.04 Feet

2. North Sixteenth (1/16) Corner Common to Sections 11 and 12

Established corner position at midpoint of straight line between Northeast corner and East Quarter corner of Section 11.

Established Corner References:

Balsam	6"	N71°E	6.25 Feet
Cedar	8"	S57°E	13.66 Feet
Steel Sign Post		Northeast	3.15 Feet

3. Center-East Sixteenth (1/16) Corner of Section 11

Established corner position at midpoint of straight line between Center and East Quarter corners of Section 11.

Established Corner References:

Spruce	6"	N10°W	30.64 Feet
Spruce	10"	S62°E	19.58 Feet
Steel Sign Post		West	2.00 Feet

Stock No. 26273

Sheet 4 of 4

4. Southeast Sixteenth (1/16) Corner of Section 11
Established corner position at intersection of east and south 1/16 lines of Section 11.
Established Corner References:

Y. Birch	5"	N60°E	57.99 Feet
Sugar	10"	S10°E	57.86 Feet
Steel Sign Post		Southwest	1.24 Feet

5. South Sixteenth (1/16) Corner Common to Sections 11 and 12
Established corner position at midpoint of straight line between East Quarter and Southeast corners of Section 11.
Established Corner References:

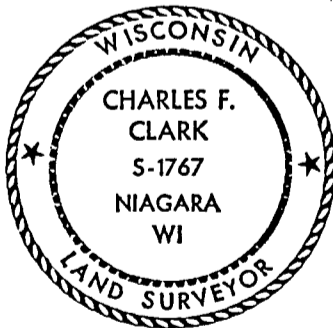
Spruce	14"	N58°W	26.11 Feet
Spruce	10"	S45°W	10.49 Feet
Steel Sign Post		Southeast	2.00 Feet

SURVEYOR'S AFFIDAVIT

State of Wisconsin)
County of Forest) S.S.

I, Charles F. Clark, Land Surveyor for Coleman Engineering Company and a registered surveyor in the State of Wisconsin, hereby certify that this survey of Section 11, Township 36 North, Range 16 East, Fourth Principal Meridian, State of Wisconsin, was performed under my direct responsible supervision.

The plat map and the notes herewith are a correct representation of the land surveyed and divided. I have surveyed and subdivided said section in accordance with the rules for survey of the public lands and with the statutes of the State of Wisconsin.



Charles F. Clark 9/4/91

Charles F. Clark
Coleman Engineering Company
R.L.S., State of Wisconsin
License No. S-1767

Plat ready for filing:

Darrell E. Richards
Acting District Ranger

Date of Survey: 1991

