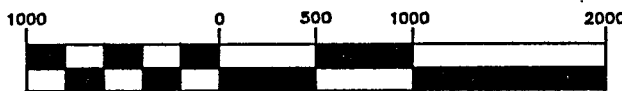


PLAT OF SURVEY

U.S. GOVERNMENT LANDS

BEING THE NW1/4-NW1/4; E1/2-NW1/4; S1/2-NE1/4;
E1/2-SE1/4; S1/2-SW1/4; AND NW1/4-SW1/4 OF SECTION 12
TOWNSHIP 36 NORTH, RANGE 16 EAST,
FOURTH PRINCIPAL MERIDIAN

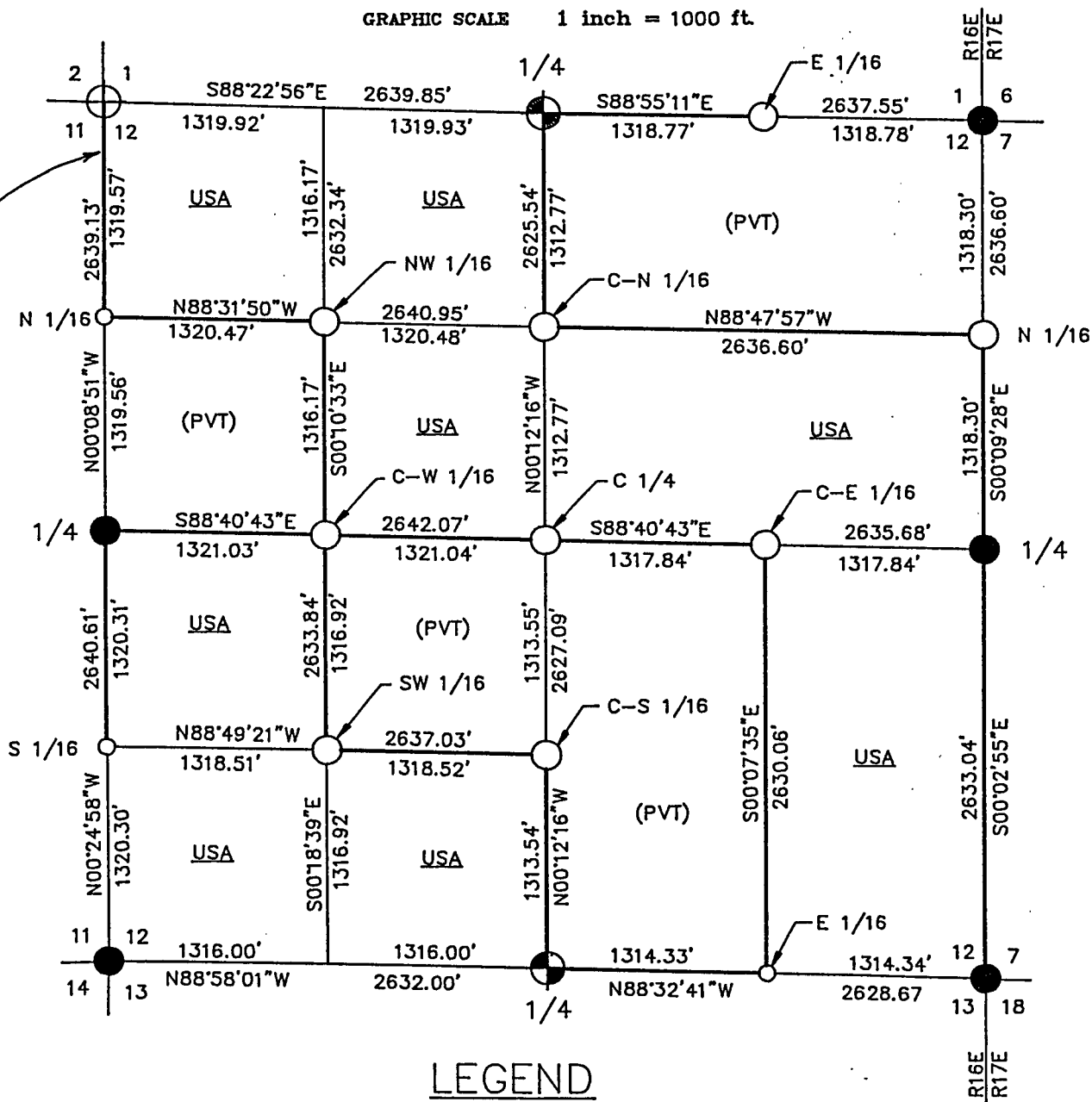
FOREST COUNTY, WISCONSIN



GRAPHIC SCALE 1 inch = 1000 ft.

NORTH

SEE DETAILS - SHEET 2



LEGEND

- 2-1/2" X 36" ALUMINUM CAPPED PIPE - SET THIS SURVEY
- 1" X 36" ALUMINUM CAPPED MONUMENT - SET THIS SURVEY
- 1" X 60" ALUMINUM CAPPED MONUMENT - SET THIS SURVEY
- FOUND ALUMINUM CAPPED PIPE
- FOUND IRON PIPE WITH BRASS CAP
- BOUNDARY LINE MARKED TO FOREST SERVICE STANDARDS

SUPPLEMENTAL PLAT OF SURVEY

APPARENT ENCROACHMENTS UPON U.S. GOVERNMENT LANDS

IN THE NW1/4 - NW1/4 SECTION 12, T36N - R16E
4TH PRINCIPAL MERIDIAN

FOREST COUNTY, WISCONSIN

NORTH

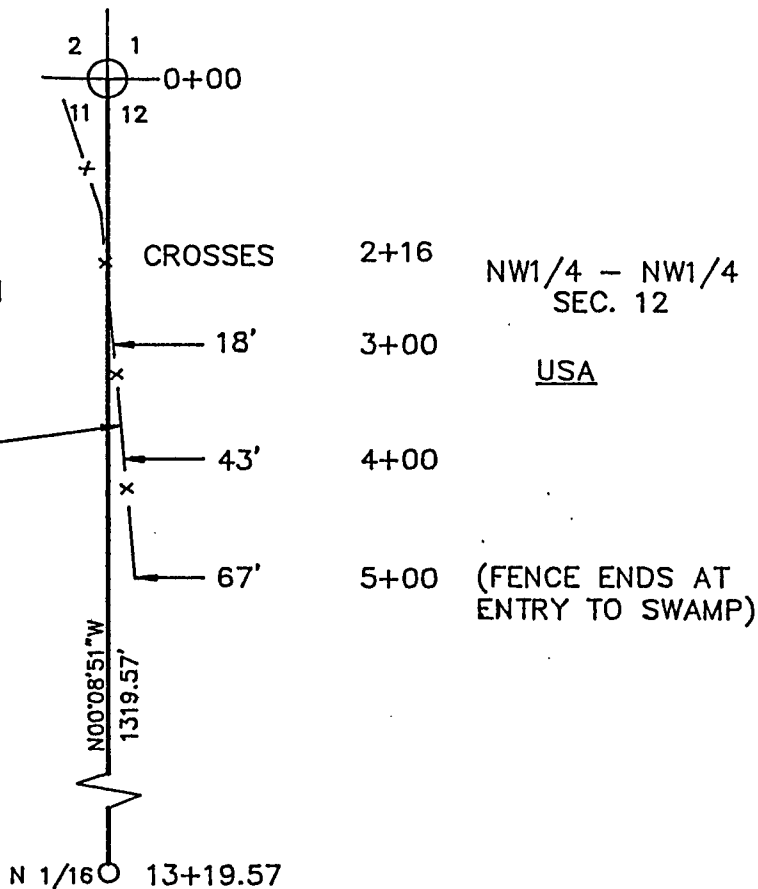


NO SCALE

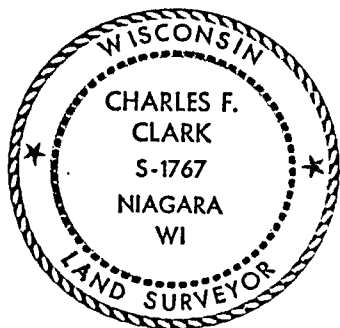
NE1/4 - NE1/4 SEC. 11

(PVT)

REMNANTS OF POST
& WIRE FENCE



(SEE "PLAT OF SURVEY - U.S. GOVERNMENT LANDS" IN SECTION 12, T36N-R16E,
FOR CORNER MONUMENTATION AND BOUNDARY INFORMATION) SHEET 1 OF 6



I HEREBY CERTIFY THAT I HAVE SURVEYED
AND MAPPED THE LINES SHOWN HEREON
AND THAT THIS SURVEY IS CORRECT TO THE
BEST OF MY KNOWLEDGE AND BELIEF.

Charles F. Clark 9/6/1991

CHARLES F. CLARK, RLS
COLEMAN ENGINEERING COMPANY
IRON MOUNTAIN, MICHIGAN 49801

Stock No. 26273

Sheet 3 of 6

SECTION 12, T36N-R16E
SURVEY NOTES

This survey was made by Coleman Engineering Company for the U.S. Department of Agriculture-Forest Service under Contract No. 53-56A6-1-00490 for the purpose of restoring and establishing corners on the perimeter of Section 12, for establishing subdivisional corners within Section 12, and for locating and marking the boundaries of U.S. Government lands along the perimeter and within Section 12, Township 36 North, Range 16 East, Fourth Principal Meridian, Forest County, State of Wisconsin.

The U.S. Government acquired ownership within Section 12 in 1935, 1936 and 1969.

The original township line and subdivision surveys of T36N-R16E were completed in September, 1857, and July, 1858, respectively.

The corner positions recovered, restored and established by this survey are marked by the monument described in the map legend.

The corner positions established were located to a minimum accuracy of 1 part in 5000.

The bearings between corner positions are true bearings as determined by solar (hour-angle) observations.

The field notes of the survey and a copy of this plat are on file in the Forest Supervisor's office in Rhinelander, Wisconsin.

CORNERS RECOVERED OR RESTORED

1. Section Corner Common to Sections 1, 2, 11 and 12
Corner position recovered as found 1" x 12" iron bolt (buried) with 1-1/2" squared head, presumed set by prior unknown surveyor. Position was accepted as most probable location of true corner.
Established Corner References:

Sugar	6"	N57°E	25.55 Feet
Sugar	9"	S38°E	40.82 Feet
Sugar	12"	S65°W	17.16 Feet
Sugar	8"	N64°W	52.31 Feet
Steel Sign Post		Northwest	11.52 Feet

2. Quarter Corner Common to Sections 1 and 12
Corner position monumented by M.E. Stefan, RLS 1558. Certificate on file in Forest County - Document No. 124220.

3. Standard Corner Common to Sections 1 and 12, T36N-R16E, and Sections 6 and 7, T36N-R17E
Corner position monumented by Gould and Hammes in 1937 as recovered by A.D. Harrison, RLS 1651, in 1984. Certificate on file in Forest County - Document No. 127221.

4. Standard Quarter Corner Common to Section 12, T36N-R16E, and Section 7, T36N-R17E
Recovered corner monument of 4-inch iron pipe with inscribed brass cap set by Gould and Hammes as part of 1937 Marinette County survey. Accepted monument as best evidence of true corner location.
Established Corner References:

Red Maple	6"	N65°E	23.55 Feet
B. Cherry	6"	N45°W	24.89 Feet
Red Maple (Twin)	6"	S09°E	29.92 Feet
B. Cherry	6"	S47°W	40.38 Feet
Steel Sign Post		West	1.51 Feet

Stock No. 26273

Sheet 4 of 6

5. Standard Corner Common to Sections 12 and 13, T36N-R16E, and Sections 7 and 18, T36N-R17E

Corner position monumented by J.F. Resvick, RLS 802. Certificate on file in Forest County - Document No. 96744.

Established Additional Corner References:

Aspen	8"	N50°E	10.77 Feet
Red Maple	5"	N05°E	17.83 Feet
Steel Sign Post		Northwest	1.84 Feet

6. Quarter Corner Common to Sections 12 and 13

Recovered corner position as monumented in 1982 by M.E. Stefan, RLS 1558; monument and BT's were in accordance with field notes as furnished by USDA-Forest Service.

Corner References Recovered:

W. Spruce	12"	S76°E	41.03 Feet
W. Spruce	10"	S06°E	64.30 Feet
W. Spruce	16"	S88°W	68.19 Feet
Steel Sign Post		East	1.4 Feet

7. Section Corner Common to Sections 1, 2, 11 and 12

Corner position monumented by J.F. Resvick, RLS 802. Certificate on file in Forest County - Document No. 95888.

8. Quarter Corner Common to Sections 11 and 12

Corner position monumented by J.F. Resvick, RLS 802. Certificate on file in Forest County - Document No. 95887.

Established Additional Corner References:

Aspen	8"	N67°E	33.01 Feet
Sugar	4"	S65°E	21.15 Feet
Balsam	8"	S25°W	46.78 Feet
Steel Sign Post		Southeast	2.70 Feet

CORNERS ESTABLISHED1. East Sixteenth (1/16) Corner Common to Sections 1 and 12

Established corner position at the midpoint of a straight line between the Northeast corner and North Quarter corner of Section 12.

Established Corner References:

Cedar	8"	S67°W	22.41 Feet
Cedar	12"	N17°W	13.30 Feet
Steel Sign Post		Northwest	1.47 Feet

2. North Sixteenth (1/16) Corner Common to Sections 11 and 12

Established corner position at midpoint of straight line between Northwest corner and West Quarter corner of Section 12.

Established Corner References:

Balsam	6"	N71°E	6.25 Feet
Cedar	8"	S57°E	13.66 Feet
Steel Sign Post		Northeast	3.15 Feet

3. Northwest Sixteenth (1/16) Corner of Section 12

Established corner position at the intersection of the north and west 1/16 lines of Section 12.

(Continued on Sheet 4)

Stock No. 26273

Sheet 5 of 6

3. (Continued) Established Corner References:

Poplar	11"	N89°W	39.31 Feet
Spruce	9"	N21°W	39.70 Feet
Steel Sign Post		Northeast	1.65 Feet

4. Center-North Sixteenth (1/16) Corner of Section 12

Established corner position at the midpoint of a straight line between the North and Center Quarter corners of Section 12.

Established Corner References:

Ash	4"	South	43.73 Feet
Ash	4"	S87°E	34.15 Feet
Steel Sign Post		S45°W	1.0 Foot

5. North Sixteenth (1/16) Corner Common to Section 12, T36N-R16E, and Section 7, T36N-R17E

Established corner position at the midpoint of a straight line between the Northeast corner and East Quarter corner of Section 12.

Established Corner References:

Basswood	5"	N30°E	27.81 Feet
Sugar	19"	S08°E	5.59 Feet
Steel Sign Post		Southwest	1.68 Feet

6. Center-West Sixteenth (1/16) Corner of Section 12

Established corner position at the midpoint of a straight line between the West and Center Quarter corners of Section 12.

Established Corner References:

Red Maple	5"	N23°E	19.00 Feet
Balsam	6"	N63°W	26.26 Feet
Steel Sign Post		Northeast	1.67 Feet

7. Center Quarter Corner of Section 12

Established corner position at the intersection of straight lines between the opposing quarter corners on the perimeter of Section 12.

Established Corner References:

Ash	6"	S89°W	22.66 Feet
Ash	4"	S30°W	6.16 Feet
Steel Sign Post		North	1.54 Feet

8. Center-East Sixteenth (1/16) Corner of Section 12

Established corner position at the midpoint of a straight line between the Center and East Quarter corners of Section 12.

Established Corner References:

Elm	9"	S65°E	31.93 Feet
Ash	5"	S10°E	60.24 Feet
Steel Sign Post		Northeast	2.78 Feet

9. South Sixteenth (1/16) Corner Common to Sections 11 and 12

Established corner position at midpoint of straight line between West Quarter and Southwest corners of Section 12.

Established Corner References:

Spruce	14"	N58°W	26.11 Feet
Spruce	10"	S45°W	10.49 Feet
Steel Sign Post		Southeast	2.00 Feet

