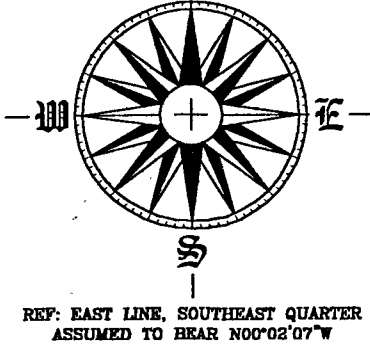


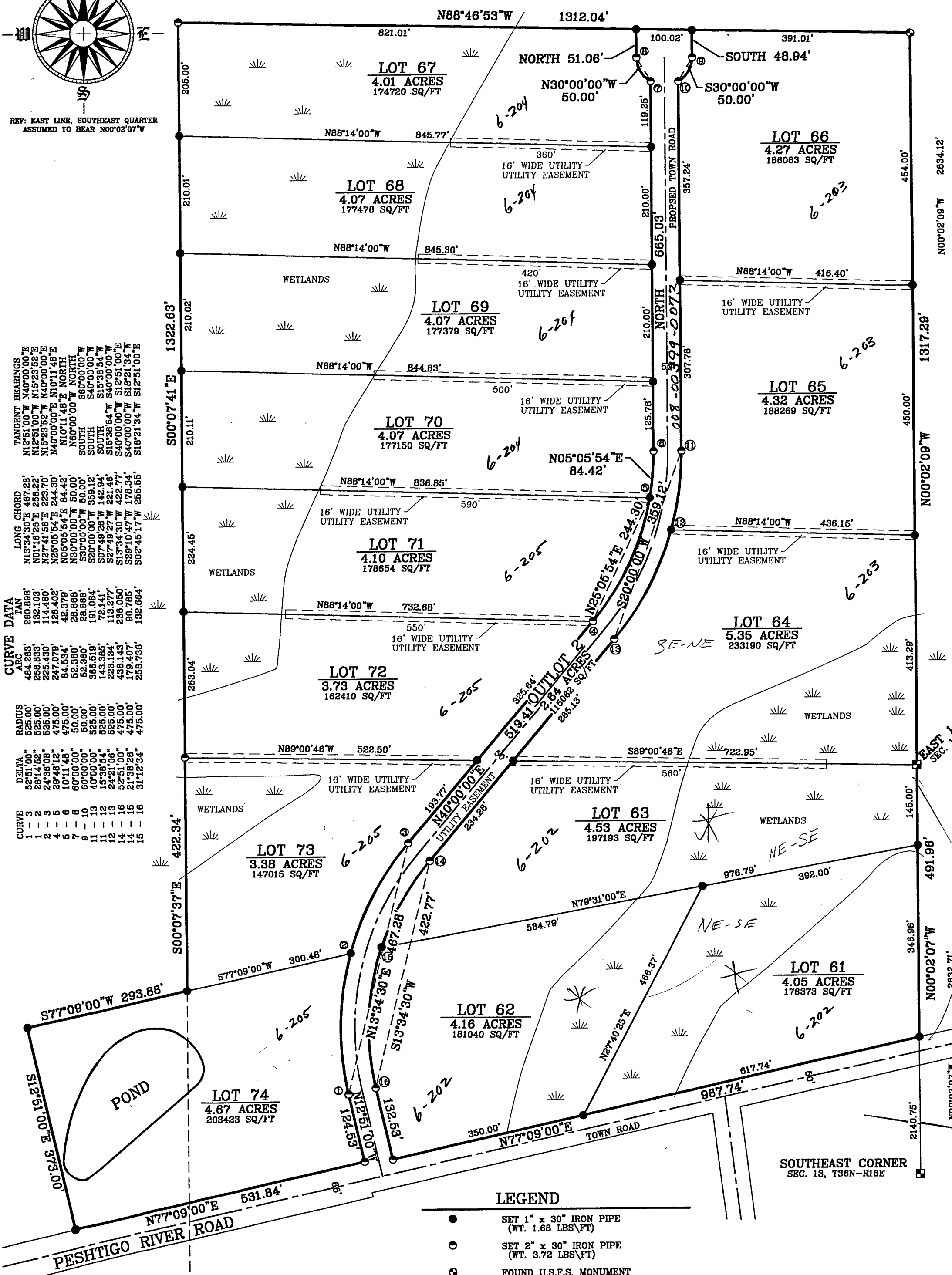
PART OF SECTION 13, T36N-R16E, TOWN OF BLACKWELL, FOREST COUNTY, WISCONSIN

04-2975

KAMPS OFFICE MAP NUMBER



REF: EAST LINE, SOUTHEAST QUARTER ASSUMED TO BEAR N00°02'07"W



CURVE DATA	TAN	LONG CHORD	TANGENT BEARINGS
1	280.998'	484.263'	N12°51'00"W N40°00'00"E
2	132.103'	258.833'	N12°51'00"W N15°23'52"E
3	114.480'	225.430'	N15°23'52"W N40°00'00"E
4	126.402'	247.079'	N40°00'00"E N10°11'48"E
5	84.534'	162.379'	N10°11'48"E NORTH
6	52.380'	103.000'	N60°00'00"W NORTH
7	52.380'	103.000'	S60°00'00"W SOUTH
8	101.084'	182.868'	S40°00'00"W SOUTH
9	72.141'	142.844'	S15°38'54"W SOUTH
10	143.365'	267.492'	S15°38'54"W SOUTH
11	113.277'	221.468'	S40°00'00"W SOUTH
12	236.050'	422.771'	S40°00'00"W SOUTH
13	438.143'	789.104'	S18°21'34"W SOUTH
14	179.407'	307.788'	S18°21'34"W SOUTH
15	132.864'	255.555'	S12°51'00"E SOUTH
16	258.738'	454.000'	S12°51'00"E SOUTH

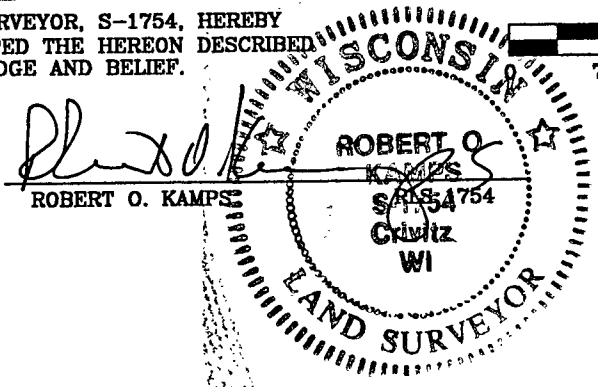
CURVE	DELTA	RADIUS	ARC
1	52°51'00"	525.00'	484.263'
2	28°14'52"	525.00'	132.103'
3	24°38'08"	525.00'	114.480'
4	29°48'12"	475.00'	126.402'
5	10°11'48"	475.00'	84.534'
6	60°00'00"	50.00'	52.380'
7	60°00'00"	50.00'	52.380'
8	40°00'00"	525.00'	101.084'
9	15°38'54"	525.00'	72.141'
10	24°21'08"	525.00'	143.365'
11	52°51'00"	475.00'	113.277'
12	52°51'00"	475.00'	236.050'
13	21°38'28"	475.00'	438.143'
14	31°12'34"	475.00'	179.407'
15	31°12'34"	475.00'	132.864'
16	31°12'34"	475.00'	258.738'

- LEGEND**
- SET 1" x 30" IRON PIPE (WT. 1.68 LBS/FT)
  - SET 2" x 30" IRON PIPE (WT. 3.72 LBS/FT)
  - ⊙ FOUND U.S.F.S. MONUMENT (2" x 5" ALUM. MON w/ ALUM. CAP)
  - ⊠ FOUND 4" IRON POST w/ BRASS CAP

SCALE: 1" = 150'  
DATE: MARCH 31, 2004

**SURVEYORS' CERTIFICATE**

I, ROBERT O. KAMPS, REGISTERED LAND SURVEYOR, S-1754, HEREBY CERTIFY THAT I HAVE SURVEYED AND MAPPED THE HEREON DESCRIBED AND DEPICTED LANDS TO MY BEST KNOWLEDGE AND BELIEF.



**SURVEYED BY THE OFFICE OF:**  
ROB KAMPS LAND SURVEYING  
JEFF LIEUWEN-SURVEYOR  
P.O. BOX 757  
CRIVITZ, WI 54114

**SURVEYED BY THE ORDER OF:**  
LANDS OF WISCONSIN  
3863 ALGOMA ROAD  
GREEN BAY, WISCONSIN 54114

LTS IN EXC  
CHANGE  
RD

check  
246 A  
RD