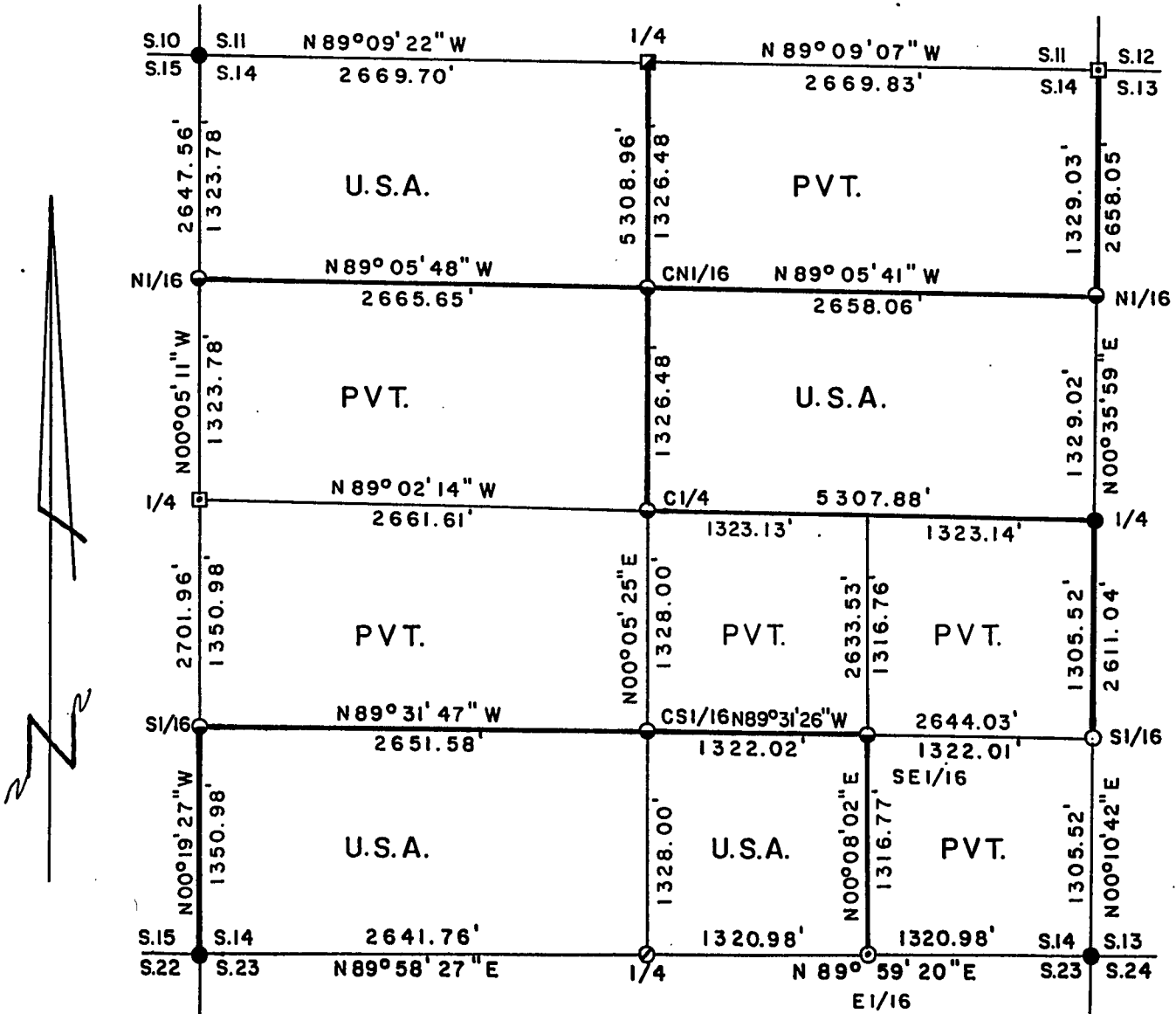
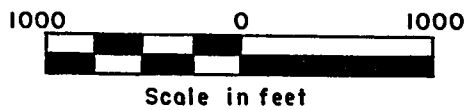


Stock No. 26273

PLAT OF SURVEY FOR CERTIFIED LAND CORNER RESTORATION AND ESTABLISHMENT Sheet 1 of 6
 BEING THE CORNERS FOR THE N1/2-NW1/4, S1/2-NE1/4, S1/2-SW1/4, AND SW1/4-SE1/4 OF SECTION 14, T.36N. R.16E., FOURTH PRINCIPAL MERIDIAN COUNTY OF FOREST, STATE OF WISCONSIN



SCALE 1" = 1000'



LEGEND

- 2 inch I.D. iron pipe monument with a brass cap set by U.S.F.S.
- ▣ 2½ inch diameter aluminum pipe monument with an aluminum cap set by Charles F. Clark
- 2½ inch diameter aluminum pipe monument with an aluminum cap set by U.S.F.S.
- ⊙ 1 inch diameter aluminum pipe monument with an aluminum cap set by John C. Schulke
- ⊖ 2½ inch diameter aluminum pipe monument with an aluminum cap set by John C. Schulke
- 1 inch diameter aluminum pipe monument 36 inches long with an aluminum cap
- 1 inch diameter aluminum pipe monument 60 inches long with an aluminum cap
- Boundary line marked to Forest Service standards

Stock No. 26273

Sheet 2 of 6

SURVEY NOTES

This survey was made by Gary L. Pisoni, a Registered Land Surveyor in the State of Wisconsin, for the U.S.D.A., Forest Service, for the purpose of recovering, restoring, establishing, marking, and perpetuating the corners and boundary lines of U.S. Government Land on the perimeter and within Section 14, Township 36 North, Range 16 East, Fourth Principal Meridian, Forest County, State of Wisconsin, as shown on the plat map herewith.

The Original Government Township Lines were done Artemas Curtis, U.S. Deputy Surveyor in September of 1857. The original Government Sub-division of this township was done by James McBride, U.S. Deputy Surveyor in July of 1858.

The bearings between corner positions are true bearings referenced to the West One-Half of the South section line of Section 11, as determined by a solar observation by Charles F. Clark of Coleman Engineering Co. from a Plat of Survey of 1991 of Section 11. All distances shown thereon are in feet and hundredths of feet. The control traverse was measured by use of an electronic distance measuring equipment.

The accuracy of this survey exceeds the State requirements of 1 in 3000.

The field notes and a copy of the Plat of Survey are on file in the Forest Supervisor's Office at Rhinelander, Wisconsin.

CORNERS RECOVERED AND RESTORED1. Northeast Section Corner

In 1968, Jean F. Resvick, RLS (U.S.F.S.) restored the corner position from original bearing tree stump holes and an iron pipe found at the corner position.

1968 Corner references:

Spruce	4"	N 10°W	93.25 feet
Spruce	4"	S 84°E	56.00 feet
Spruce	4"	S 02°W	38.20 feet
Aspen	6"	N 73°W	49.37 feet
4 X 4 Cedar Post		N 42°E	1.70 feet

2. North Quarter Corner

In 1991, Charles Clark, RLS restored the corner position by proportionate methods and set a 2 1/2" aluminum pipe monument with a stamped cap.

1991 Corner References:

Basswood	10"	S 41°E	17.54 feet
Sugar Maple	8"	S 31°W	12.10 feet
Sugar Maple	10"	N 89°W	18.50 feet
Ash	12"	N 06°W	9.62 feet
Steel Sign Post		North	1.35 feet

Stock No. 26273

Sheet 3 of 6

3. Northwest Section Corner

In 1981, Milo Stefan, RLS restored the corner position from an original bearing tree stump hole and flue pipe set by Goodman Lumber Co. in 1927. Stefan replaced flue pipe with a 2" dia. aluminum pipe monument with a stamped cap.

1981 Corner References:

Sugar Maple	5"	N 40°E	2.45 feet
Sugar Maple	4"	S 48°E	16.51 feet
Sugar Maple	5"	S 08°W	22.56 feet
Sugar Maple	5"	N 55°W	10.45 feet
Steel Sign Post		Southwest	3.65 feet

4. West Quarter Corner

In 1968, Jean F. Resvick, RLS. restored the corner position from a recovered 2" diameter iron pipe, two stump holes that matched the original bearing trees and two local bearing trees facing the corner position.

1968 Corner References:

Yellow Birch	18"	N 56°E	21.50 feet
Hemlock	16"	N 05°W	28.77 feet

1994 New Corner References:

Red Maple	10"	S 54°E	16.70 feet
Red Maple	6"	S 22°W	15.84 feet
Steel sign post		N 54°W	1.75 feet

5. Southwest Section Corner

In 1987, Alan Harrison, RLS restored the corner position from a recovered location poster on a fallen 10" Cedar and set a 2" diameter aluminum pipe monument with stamped cap.

1987 Corner References:

Spruce	14"	N 07°E	55.65 feet
Hemlock	16"	S 24°E	49.41 feet
Cedar	12"	S 49°W	32.80 feet
Cedar	10"	N 53°W	19.30 feet
Steel Sign Post		Northeast	1.54 feet

6. South Quarter Corner

In 1988, John Schulke, RLS restored the corner position by proportionate methods and set a 2 1/2" dia. aluminum pipe monument with a stamped cap.

1988 Corner References:

Iron Pipe	1 1/2"x2 1/2'	N 40°E	24.45 feet
Iron Pipe	1 1/2"x2 1/2'	S 50°E	15.15 feet
Chiseled "X" on Rock		S 12°W	77.22 feet
Chiseled "X" on Rock		N 49°W	29.91 feet
Steel Sign Post		West	1.50 feet

7. East Sixteenth Corner

In 1988, John C. Schulke, RLS. established the corner position at midpoint and on line between the North Quarter corner and the Northeast Section Corner of Section 23.

1988 Corner References:

Balsam	7"	N 13°E	36.01 feet
Balsam	6"	N 86°E	46.08 feet
Steel Sign Post		Southwest	0.90 feet

Stock No. 26273

Sheet 4 of 6

8. Southeast Section Corner

In 1988, John Schulke, RLS found the corner as described in Milo Stefan's U.S.F.S. field notes of 1982. Milo Stefan found an iron bolt and replaced it with a 2 1/2 inch x 36 inch aluminum monument with a stamped cap.

1982 Milo Stefan's Corner References:

Basswood	18"	N 08°E	46.80 feet
Sugar Maple	6"	N 89°E	9.64 feet
Sugar Maple	5"	N 48°W	37.55 feet
Steel Sign Post		West	1.30 feet

1988 Corner References Recovered by John Schulke:

Basswood	20"	N 15°E	46.78 feet
Sugar Maple	7"	N 89°E	9.57 feet
Sugar Maple	6"	N 39°W	37.45 feet
Steel sign post		West	1.30 feet

New Corner Reference in 1988 by John Schulke:

Sugar Maple	6"	N 45°E	43.85 feet
-------------	----	--------	------------

9. East Quarter Corner

In 1982, Milo Stefan restored the corner position from a 2 1/2 foot flue pipe set by Goodman Lumber Co. in 1926. Stefan replaced the flue pipe with a 2" dia. aluminum pipe monument with a stamped cap.

1982 Corner References:

Black Cherry	6"	N 53°E	29.23 feet
Black Cherry	6"	S 02°W	23.70 feet
White Spruce	6"	N 23°W	36.11 feet
Steel Sign Post		North	3.90 feet

1994 Corner References:

Black Cherry (Dead)		N 53°E	
Black Cherry Exists	8"	S 02°W	23.70 feet
White Spruce	9"	N 23°W	36.11 feet
Elm (New)	6"	N 64°E	12.28 feet
Black Cherry (New)	7"	N 71°W	18.93 feet

CORNERS ESTABLISHED1. North Sixteenth Corner between Sections 14 and 15.

Corner position restored at midpoint and on line between the Northwest Section corner and West Quarter corner of Section 14.

Corner references:

Sugar Maple	9"	N 05°E	12.78 feet
Sugar Maple	5"	S 16°E	14.86 feet
Steel Sign Post		N 60°W	0.76 feet

2. Center North Sixteenth Corner

Corner position established at midpoint and on line between the North quarter corner and the Center quarter corner.

Corner References:

Black Cherry	4"	N 12°E	21.23 feet
Aspen	9"	S 38°W	36.53 feet
Steel Sign Post		East	0.98 feet

Stock No. 26273

Sheet 5 of 6

3. Center Quarter Corner

Corner position established at the intersection of straight line between opposing quarter corner positions on the perimeter of the Section.

Corner References:

Sugar Maple	7"	S 65°E	11.99 feet
Sugar Maple	6"	N 11°W	11.44 feet
Steel Sign Post		South	1.19 feet

4. South Sixteenth Corner between Sections 14 and 15

Corner position established at midpoint and on line between the Southwest Section corner and the West quarter corner of Section 14.

Corner References:

Basswood	10"	S 36°W	27.75 feet
White Spruce	12"	N 45°W	33.52 feet
Iron Pipe	1 1/4"	S 13°E	10.50 feet
Steel Sign Post		West	1.30 feet

5. Centersouth Sixteenth Corner

Corner position established at midpoint and on line between the Center quarter corner and the South quarter corner in Section 14.

Corner References:

White Spruce	12"	S 14°W	37.23 feet
White Spruce	12"	S 76°W	36.43 feet
Steel Sign Post		S 34°E	1.25 feet

6. Southeast Sixteenth Corner

Corner position established at the intersection of straight line between opposing sixteenth corner position on the perimeter of the Southeast quarter of Section 14.

Corner References:

Balsam	8"	N 35°E	7.25 feet
Red Maple	6"	S 05°W	14.28 feet
Steel Sign Post		East	0.50 feet

7. South Sixteenth Corner between Sections 13 and 14

Corner position established at midpoint and on line between the Southeast Section corner and the East quarter corner of Section 14.

Corner References:

Spruce	8"	N 03°E	90.55 feet
Balsam	7"	N 31°E	108.91 feet
Steel Sign Post		West	0.90 feet
Steel Sign Post		South	1.58 feet



Stock No. 26273

Sheet 6 of 6

8. North Sixteenth Corner between Sections 13 and 14

Corner position established at midpoint and on line between the Northeast Section corner and East quarter corner of Section 14.

Corner References:

Ash	6"	N 06°W	20.08 feet
Spruce	10"	N 76°E	27.55 feet
Steel Sign Post		S 45°E	0.69 feet

SURVEYOR'S CERTIFICATE

State of Wisconsin)ss
County of Forest)

I, Gary L. Pisoni, a Cadastral Surveyor, and a Registered Land Surveyor in the State of Wisconsin, hereby certify that I have surveyed and sub-divided Section 14, Township 36 North, Range 16 East, Fourth Principal Meridian, State of Wisconsin.

The plat map and survey notes herewith are a correct representation of the land surveyed and divided. I have surveyed and sub-divided said section in accordance with the rules for the survey of public lands and with the statutes of the State of Wisconsin.

Date of Survey: 1993-94

Gary L. Pisoni

Cadastral Surveyor
R.L.S. State of Wisconsin
Certificate S-1634

