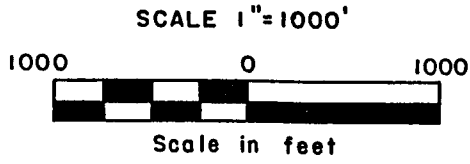
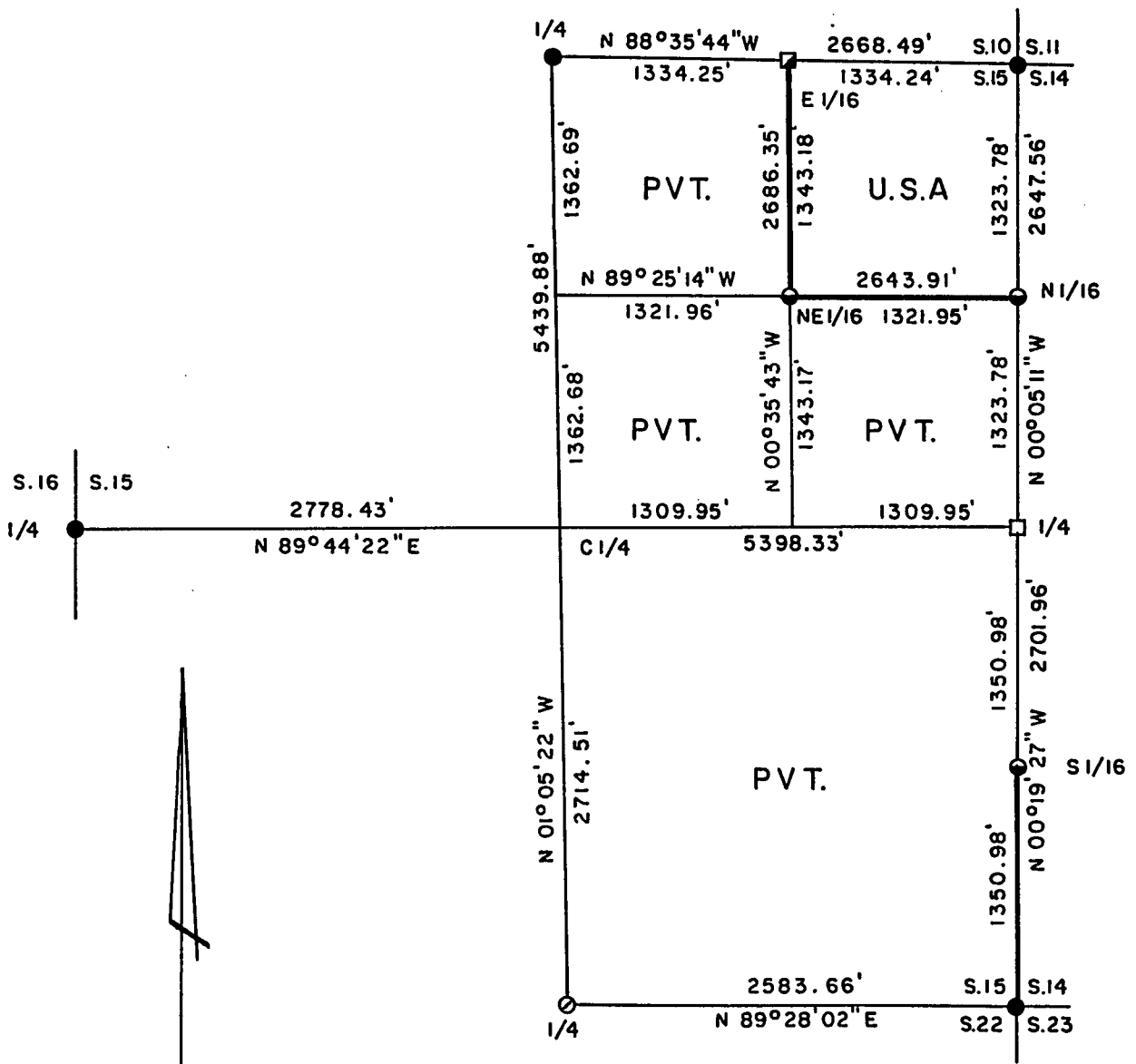


Stock No. 26273

PLAT OF SURVEY FOR CERTIFIED LAND CORNER  
RESTORATION AND ESTABLISHMENT  
BEING THE CORNERS FOR THE NE 1/4-NE 1/4 OF SECTION 15  
T. 36 N. R. 16 E., FOURTH PRINCIPAL MERIDIAN  
COUNTY OF FOREST, STATE OF WISCONSIN

Sheet 1 of 5



LEGEND

- 2½ inch diameter aluminum pipe monument with an aluminum cap set by U.S.F.S.
- ⊙ 2½ inch diameter aluminum pipe monument with an aluminum cap set by John C. Schulke
- ⊠ 1 inch diameter aluminum pipe monument with an aluminum cap set by Charles F. Clark
- 2 inch I.D. iron pipe monument with a brass cap set by U.S.F.S.
- 1 inch diameter aluminum pipe monument 36 inches long with an aluminum cap
- Boundary line marked to Forest Service standards

Stock No. 26273

Sheet 2 of 5

SURVEY NOTES

This survey was made by Gary L. Pisoni, a Registered Land Surveyor in the State of Wisconsin, for the U.S.D.A., Forest Service, for the purpose of recovering, restoring, establishing, marking, and perpetuating the corners and boundary lines of U.S. Government Land on the perimeter and within Section 15, Township 36 North, Range 16 East, Fourth Principal Meridian, Forest County, State of Wisconsin, as shown on the plat map herewith.

The Original Government Township Lines were done by Artemas Curtis, U.S. Deputy Surveyor in September of 1857. The original Government Sub-division of this township was done by James McBride, U.S. Deputy Surveyor in July of 1858.

The bearings between corner positions are true bearings referenced to the West One-Half of the South section line of Section 11, as determined by a solar observation by Charles F. Clark of Coleman Engineering Co. from a Plat of Survey of 1991 of Section 11. All distances shown thereon are in feet and hundredths of feet. The control traverse was measured by use of an electronic distance measuring equipment.

The accuracy of this survey exceeds the State requirements of 1 in 3000.

The field notes and a copy of the Plat of Survey are on file in the Forest Supervisor's Office at Rhinelander, Wisconsin.

CORNERS RECOVERED AND RESTORED1. Northeast Section Corner

In 1981, Milo Stefan, RLS restored the corner position from an original bearing tree stump hole and flue pipe set by Goodman Lumber Co., in 1927. Stefan replaced flue pipe with a 2" dia. aluminum pipe monument with a stamped cap.

## 1981 Corner References:

Sugar Maple	5"	N 40°E	2.45 feet
Sugar Maple	4"	S 48°E	16.51 feet
Sugar Maple	5"	S 08°W	22.56 feet
Sugar Maple	5"	N 55°W	10.45 feet
Steel sign post		Southwest	3.65 feet

Stock No. 26273

Sheet 3 of 5

2. East Quarter Corner

In 1968, Jean F. Resvick, RLS. restored the corner position from a recovered 2" diameter iron pipe, two stump holes that matched the original bearing trees and two local bearing trees facing the corner position.

## 1968 Corner References:

Yellow Birch	18"	N 56°E	21.50 feet
Hemlock	16"	N 05°W	28.77 feet

## New Corner References:

Red Maple	10"	S 54°E	16.70 feet
Red Maple	6"	S 22°W	15.84 feet
Steel sign post		N 54°W	1.75 feet

3. Southeast Section Corner

In 1987, Alan Harrison, RLS. restored the corner position from evidence of a fallen cedar location poster tree with location poster set by White and Laird in 1934. White and Laird found wood post and iron pipe in 1934. Harrison found no evidence of wood post or flue pipe but found and accepted location poster cedar tree from records of the 1934 survey.

## Corner References:

Spruce	14"	N 07°E	55.65 feet
Hemlock	16"	S 24°E	49.41 feet
Cedar	12"	S 49°W	32.80 feet
Cedar	10"	N 53°W	19.30 feet
Steel Sign Post		Northeast	1.54 feet

4. South Quarter Corner

In 1988, John Schulke, RLS. restored the corner position by proportionate measurement methods where he did not accept a found iron pipe. Schulke placed an aluminum pipe monument with stamped cap. Iron pipe is S 86°E, 6.85 feet from the monument.

## Corner References:

Hemlock	6"	N 74°W	41.00 feet
Basswood	17"	N 86°E	45.35 feet
Hemlock	13"	S 52°E	57.89 feet
Sugar Maple	8"	S 17°W	45.07 feet
Steel Sign Post		Southwest	1.00 feet

5. West Quarter Corner

In 1987, Alan Harrison, RLS restored the corner position from a found iron pipe and post hole. Foun original tamarack stump and two local cedar BTs. Harrison restored corner with a 2 1/2" X 36" aluminum monument with a stamped cap.

## 1987 Corner References:

Cedar	12"	N 86°E	23.93 feet
Cedar	12"	S 54°E	17.22 feet
Steel Sign Post		Northwest	0.71 feet

## New Corner References:

Hemlock	11"	S 63°W	45.10 feet
Red Maple	7"	N 48°W	3.37 feet

Stock No. 26273

Sheet 4 of 5

6. North Quarter Corner

In 1990, Alan D. Harrison, RLS restored the corner position from a post hole and flue pipe set by Goodman Lumber Co. in 1927. Goodman Lumber Co. set corner position from original corner evidence set by James McBride in 1858. Harrison replaced iron pipe with an aluminum pipe monument with stamped cap.

## Corner References:

Sugar Maple	6"	N 54°E	28.99 feet
Hemlock	11"	S 45°E	39.11 feet
Hemlock	7"	N 61°W	14.12 feet
Steel Sign Post		North	1.35 feet

7. East Sixteenth Corner between Sections 15 and 10

In 1991, Charles F. Clark, RLS established the corner position at midpoint and on line between South Quarter corner and Southeast Section corner of Section 10.

## Corner References:

Basswood	10"	S 76°E	6.52 feet
Sugar Maple	8"	S 57°W	12.05 feet
Steel Sign Post		East	2.11 feet

CORNERS ESTABLISHED1. Northeast Sixteenth Corner

Corner position established at the intersection of the straight lines between opposing Sixteenth corner positions on the perimeter of the Northeast Quarter of Section 15.

## Corner References:

Sugar Maple	6"	N 40°E	30.44 feet
Sugar Maple	8"	N 66°W	40.23 feet
Steel Sign Post		S 39°E	0.96 feet

2. North Sixteenth Corner between Sections 14 and 15

Corner position established at midpoint and on line between the Northeast Section corner and East Quarter corner of Section 15.

## Corner References:

Sugar Maple	9"	N 05°E	12.78 feet
Sugar Maple	5"	S 16°E	14.86 feet
Steel Sign Post		N 60°W	0.76 feet

3. South Sixteenth Corner between Sections 14 and 15

Corner position established at midpoint and on line between the Southeast Section corner and East Quarter corner of Section 15.

## Corner References:

Basswood	10"	S 36°W	27.75 feet
White Spruce	12"	N 45°W	33.52 feet
Iron Pipe	1 1/4"	S 13°E	10.50 feet
Steel Sign Post		West	1.30 feet



Stock No. 26273

Sheet 5 of 5

SURVEYOR'S CERTIFICATE

State of Wisconsin)ss  
County of Forest)

I, Gary L. Pisoni, a Cadastral Surveyor, and a Registered Land Surveyor in the State of Wisconsin, hereby certify that I have surveyed and sub-divided Section 15, Township 36 North, Range 16 East, Fourth Principal Meridian, State of Wisconsin.

The plat map and survey notes herewith are a correct representation of the land surveyed and divided. I have surveyed and sub-divided said section in accordance with the rules for the survey of public lands and with the statutes of the State of Wisconsin.

Date of Survey: 1993-94

*Gary L. Pisoni*

Cadastral Surveyor  
R.L.S. State of Wisconsin  
Certificate S-1634

