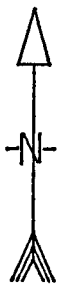
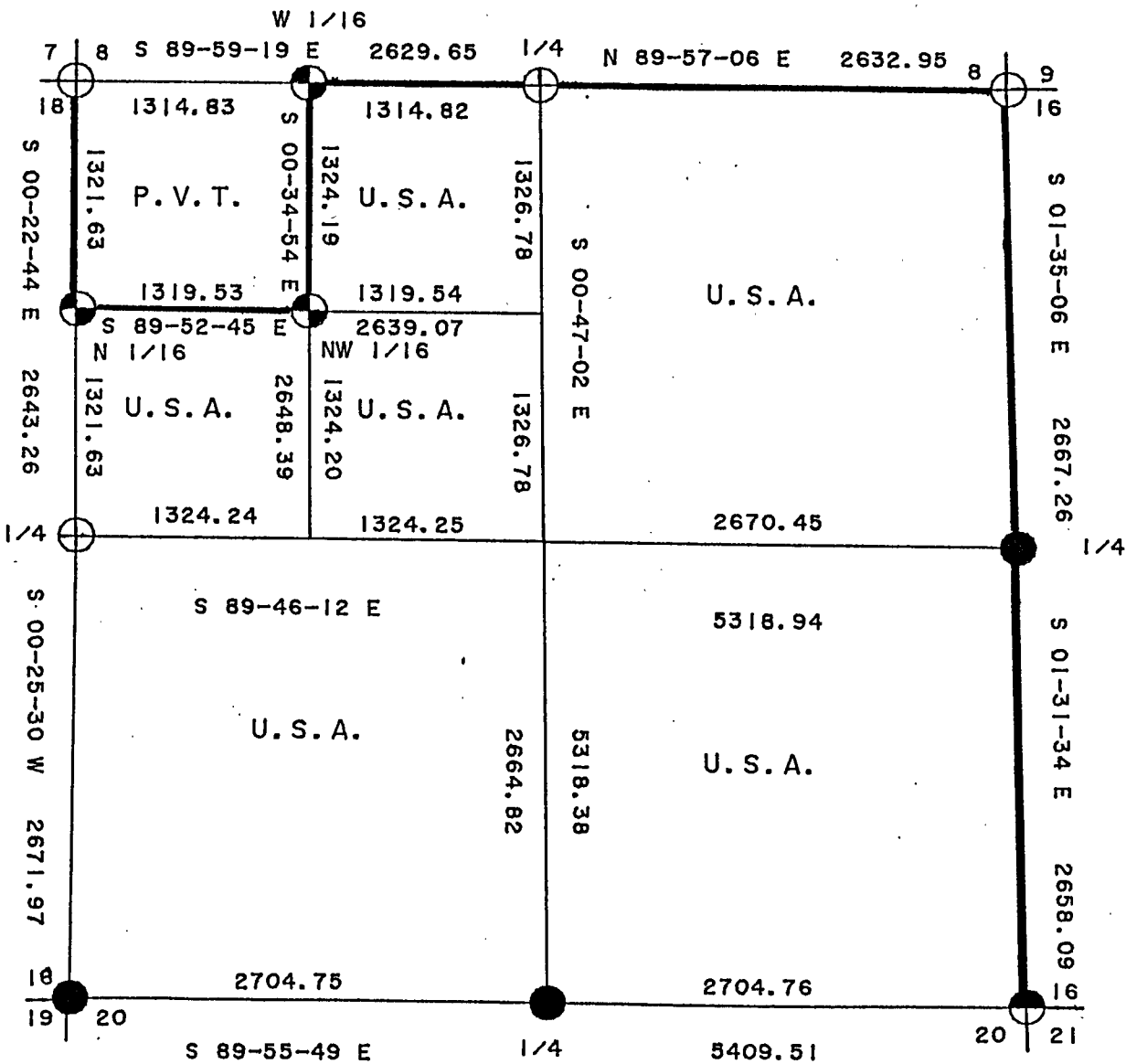
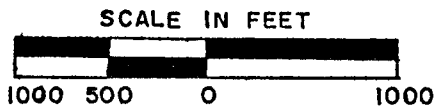


PLAT OF SURVEY

U. S. GOVERNMENT LANDS

BEING THE N.E. 1/4; THE S. 1/2; THE S. 1/2, N.W. 1/4;
AND THE N.E. 1/4, N.W. 1/4; SECTION 17, TOWNSHIP 36 NORTH,
RANGE 16 EAST, FOURTH PRINCIPAL MERIDIAN,
FOREST COUNTY, WISCONSIN.



LEGEND

- 2 1/2" X 36" ALUMINUM MONUMENT, SET THIS SURVEY
- ⊕ 2 1/2" ALUMINUM MONUMENT, FOUND IN PLACE.
- ⊙ 1" X 36" ALUMINUM MONUMENT, SET THIS SURVEY.
- ⊕ 2" BRASS CAPPED MONUMENT, FOUND IN PLACE.
- MARKED BOUNDARY LINES OF U.S. GOVERNMENT LANDS.



Stock No. 26273

SURVEY NOTES

This survey was made by the U. S. Department of Agriculture, Forest Service, for the purpose of restoring and establishing corners on the perimeter of Section 17 for establishing subdivisional corners within Section 17 and for locating and marking the boundaries of U. S. Government land on their perimeter and within Section 17, Township 26 North, Range 16 East, Fourth Principal Meridian, Forest County, Wisconsin.

The U. S. Government lands in this section were acquired in 1935.

The original government subdivision survey of this township was made in 1858 with a subsequent survey done in 1928 by Goodman Lumber Company.

The corner positions recovered, restored and established by this survey are marked by the monument described in the map legend.

The corner positions established were located to an accuracy of one part in 3000.

The bearings between corner positions are true bearings as determined by solar observations.

The field notes of this survey and a copy of this plat are on file in the Forest Supervisor's Office at Rhinelander, Wisconsin.

CORNERS RECOVERED AND RESTORED

1. Corner to Sections 7, 8, 17, and 18.

Corner monumented by William Cochrane (RLS), certificate on file in Forest County, Document Number 113299.

New Corner References:

Black Spruce	4"	N.32°W.	11.21 feet
Steel Sign Post		South	0.55 feet

2. Corner to Sections 8, 9, 16, and 17.

Corner monumented by William Cochrane (RLS), certificate on file in Forest County, Document Number 113301.

3. Corner to Sections 16, 17, 20, 21.

Corner monumented by Milo Stefan (RLS), certificate on file in Forest County, Document Number 124224.

4. Corner to Sections 17, 18, 19, 20.

Corner position restored by using original and subsequent bearing tree evidence.

Corner References:

Basswood	10"	N.89°E.	39.59 feet
Sugar	12"	S.20°E.,	41.60 feet
Sugar	10"	S.72°W.	68.51 feet
Sugar	9"	N.44°W.	93.49 feet
Steel Sign Post		East	0.79 feet

5. Quarter Corner to Sections 8 and 17.

Corner monumented by Jean Resvick (RLS), certificate on file in Forest County, Document Number 113300.

Stock No. 26273

Sheet 3 of 4

6. Quarter Corner to Sections 16 and 17.

Corner position found marked by a 2" iron pipe in a mound of rock from Goodman Lumber Company survey of 1928.

Corner References:

Yellow Birch	18"	North	19.40 feet
Sugar	7"	S.20°E.	31.24 feet
Sugar	7"	S.42°W.	56.58 feet
Steel Sign Post		South	1.35 feet

7. Quarter Corner to Sections 17 and 20.

Corner position restored by proportionate position.

Corner References:

Sugar	11"	N.04°E.	19.34 feet
Sugar	9"	S.76°W.	32.21 feet
Sugar	12"	N.61°W.	47.68 feet
Steel Sign Post		North	0.43 feet

8. Quarter Corner to Sections 17 and 18.

Corner monumented by Jean Resvick (RLS), certificate on file in Forest County, Document Number 109587.

CORNERS ESTABLISHED1. West One-Sixteenth Corner to Sections 8 and 17.

Corner position established midpoint and on line between section corner west and quarter corner east.

Corner References:

Sugar	9"	S.78°E.	6.34 feet
Sugar	6"	S.03°W.	41.12 feet
Steel Sign Post		Southeast	0.78 feet

2. North One-Sixteenth Corner to Sections 17 and 18.

Corner position established midpoint and on line between section corner north and quarter corner south.

Corner References:

Sugar	9"	N.71°E.	35.00 feet
Sugar	6"	N.28°W.	16.55 feet
Iron Pipe	1½"	N.02°W.	24.85 feet
Steel Sign Post		Southeast	0.72 feet

3. Northwest One-Sixteenth to Section 17.

Corner position established at the intersection of the north and west one-sixteenth lines to section 17.

Corner References:

Sugar	11"	N.54°E.	54.31 feet
Iron Pipe	1½"	N.54°E.	43.91 feet
Sugar	7"	S.84°W.	48.85 feet
Steel Sign post		Southeast	0.80 feet

Stock No. 26273

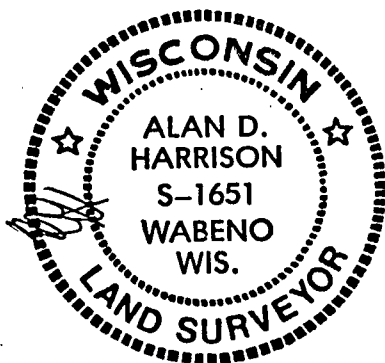
Sheet 4 of 4

SURVEYOR'S AFFIDAVIT

State of Wisconsin] SS
 County of Forest]

I, Alan D. Harrison, Land Surveyor, U.S.D.A. Forest Service and a Registered Land Surveyor in the State of Wisconsin, do hereby certify that I have surveyed and subdivided Section 17, Township 36 North, Range 16 East, Fourth Principal Meridian, State of Wisconsin.

The plat map and the notes herewith are a correct representation of the land surveyed and divided. I have surveyed and subdivided said section in accordance with the rules for survey of the public lands and with the statutes of the State of Wisconsin.



Alan D. Harrison
 LAND SURVEYOR, U.S.D.A. Forest Service
 R.L.S. Number S-1651
 State of Wisconsin

Plat ready for filing:

Dale S. Stage
 District Ranger

Date of Survey: 1989

