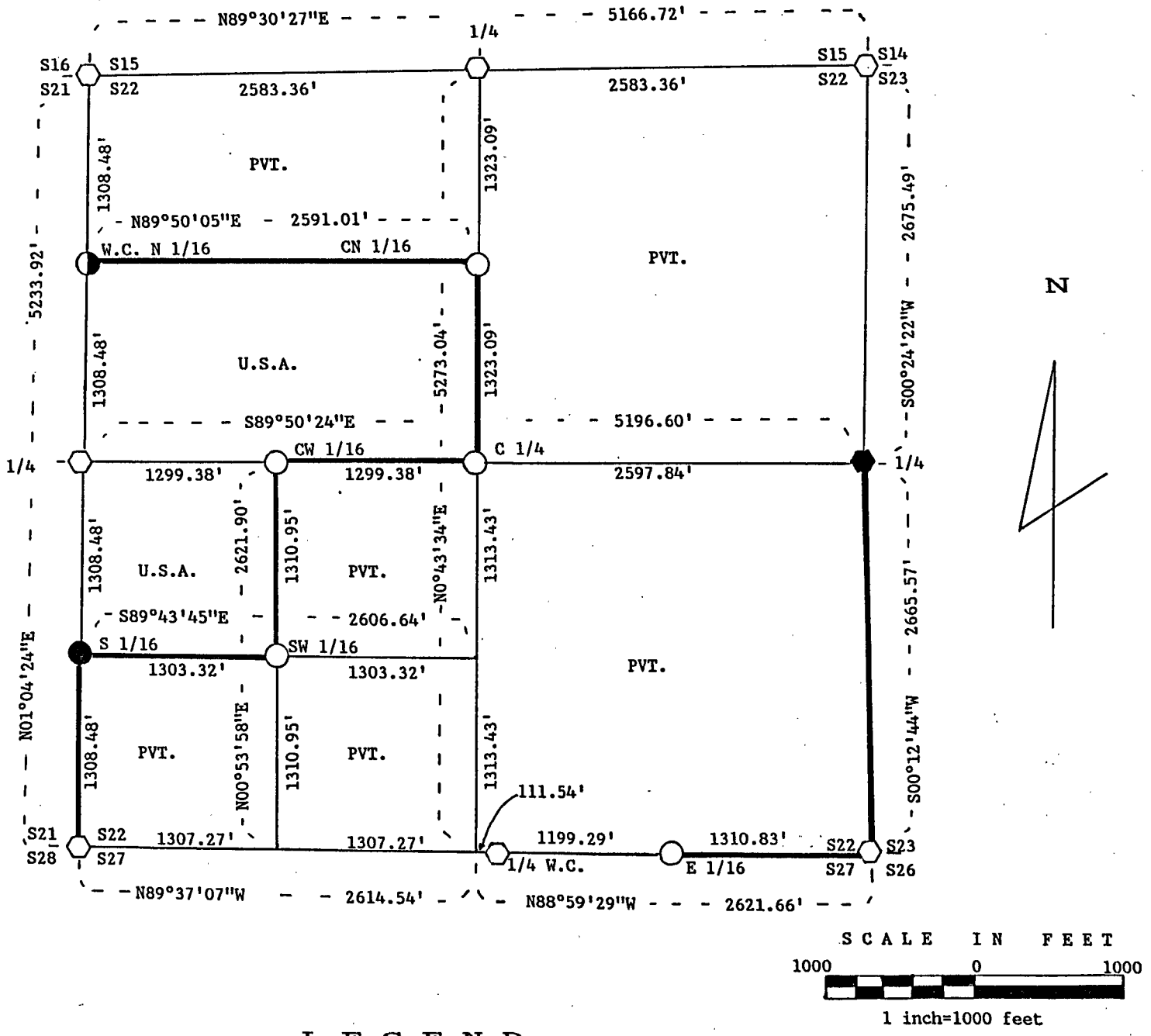


PLAT OF SURVEY FOR CERTIFIED LAND CORNER RESTORATION AND ESTABLISHMENT OF U.S. GOVERNMENT LAND

BEING THE CORNERS FOR THE SOUTH 1/2 OF THE NW 1/4 AND NW 1/4 OF THE SW 1/4.
 SECTION 22, T36N, R16E, FOURTH PRINCIPAL MERIDIAN
 FOREST COUNTY, STATE OF WISCONSIN



L E G E N D

- Boundary line marked to standard.
- 1" diameter aluminum pipe monument, 36" long with an aluminum cap stamped to identify the corner.
- ◐ Chiseled an "X" on a rock to mark the corner and placed 1" diameter Witness Corner aluminum pipe monument, 36" long with an aluminum cap stamped to identify the location of the corner.
- 1" diameter aluminum pipe monument, 60" long with an aluminum cap stamped to identify the corner.
- ◑ 2 1/2" diameter aluminum pipe monument, 30" or 36" long with an aluminum cap stamped to identify the corner.
- ◒ 2 1/2" diameter aluminum pipe monument, 60" long with an aluminum cap stamped to identify the corner.

NOTE: Bearings are referenced to polaris observations.

SURVEY NOTES

This survey was made by John C. Schulke, a Registered Land Surveyor in the State of Wisconsin, for the U.S. Department of Agriculture, Forest Service. The purpose of the survey was for recovery, establishing, marking and perpetuating the corners and boundary lines of the U.S. Government Land on the perimeter and within Section 22, Township 36 North, Range 16 East, Fourth Principal Meridian, Forest County, Wisconsin.

The Original Government Subdivision survey of this township was done by James McBride in 1858.

The bearings between corner positions are true bearings as determined by reference to polaris observations. The accuracy of this survey exceeds the State requirement for closure of 1 in 3,000. Corners recovered or established by this survey are marked as described in the map legend. Each monumented corner is referenced to blazed, scribed, painted and tagged bearing trees. Tie bearings are magnetic, and not corrected for declination.

CORNERS RECOVERED AND RESTORED

1. Section Corner Common to Sections 15, 16, 21 and 22.
Corner monument recovered in place and as described on a U.S. Public Land Survey Monument Record form filed in the Forest County Register of Deed's Office, Document #132695, in 1987 by Alan Harrison (RLS-1651).
2. Quarter Corner Between Sections 15 and 22.
Corner restored by proportional methods.

Corner references:

Hemlock	6"	N74°W	41.00 feet
Basswood	17"	N86°E	45.35 feet
Hemlock	13"	S52°E	57.89 feet
Sugar Maple	8"	S17°W	45.07 feet
Steel sign post		Southwest	1.0 feet

3. Section Corner Common to Sections 14, 15, and 22 and 23.
Corner monument recovered in place and as described on a U.S. Public Land Survey Monument Record form filed in the Forest County Register of Deed's Office, Document #134691, in 1988 by Alan Harrison (RLS-1651).
4. Quarter Corner Between Sections 22 and 23.
Recovered both BLO bearing trees.

Recovered corner references:

Cedar stump		S22°E	5.3 feet
Cedar stump		N14°E	8.6 feet

New corner references:

Aspen	9"	N30°W	64.58 feet
Black Ash	4"	N14°E	49.32 feet
Black Cherry	6"	S19°E	78.12 feet
Balsam	8"	S11°W	76.35 feet
Steel sign post		Southeast	1.0 feet

5. Section Corner Common to Sections 22, 23, 26 and 27.
Corner monument recovered in place and as described on a U.S. Public Land Survey Monument Record form filed in the Forest County Register of Deed's Office, Document #133450, in 1987 by Alan Harrison (RLS-1651).

6. Quarter Corner Between Sections 22 and 27.
Witness corner monument recovered in place and as described on a Public Land Survey Monument Record form filed in the Forest County Register of Deed's Office, Document #132696, in 1987 by Alan Harrison (RLS-1651).
7. Section Corner Common to Sections 21, 22, 27 and 28.
Corner monument recovered in place and as described on a U.S. Public Land Survey Monument Record form filed in the Forest County Register of Deed's Office, Document #129880, in 1986 by Alan Harrison (RLS-1651).
8. Quarter Corner Between Sections 21 and 22.
Corner restored by proportional methods.

Corner references:

Sugar Maple	7"	N33°E	18.96 feet
Sugar Maple	7"	S44°E	12.33 feet
Sugar Maple	4"	S10°W	8.99 feet
Sugar Maple	6"	N80°W	14.05 feet
Steel sign post		Northwest	1.6 feet

CORNERS ESTABLISHED

1. North Sixteenth Corner Between Sections 21 and 22.
Corner position is established at the midpoint and on line between the West Quarter corner and the Northwest Section corner of Section 22. The Witness Monument is N89°50'E 2.00 feet from the rock with a chiseled "X" on it to mark the corner. Recovered 1 1/2" diameter iron pipe S85°W 6.98 feet from the chiseled "X" on rock.

Corner references:

Black Cherry	4"	N51°W	14.96 feet
Black Cherry	7"	S31°W	54.22 feet
Steel sign post		East	2.9 feet
2. Center North Sixteenth Corner of Section 22.
Corner position is established at the midpoint and on line between the South Quarter corner and the Center Quarter corner of Section 22. The monument is placed in a mound of stones. Recovered 1 1/2" diameter iron pipe N45°E 6.10 feet from the monument.

Corner references:

Sugar Maple	5"	S42°E	15.05 feet
Sugar Maple	8"	S59°W	16.79 feet
Steel sign post		Southwest	1.0 feet
3. Center West Sixteenth Corner of Section 22.
Corner position is established at the midpoint and on line between the West Quarter corner and the Center Quarter corner of Section 22. Recovered 1 1/2" diameter iron pipe N80°E 11.50 feet from the monument.

Corner references:

Sugar Maple	5"	N30°E	22.08 feet
Sugar Maple	5"	S58°W	22.73 feet
Steel sign post		Northwest	0.7 feet
4. Center Quarter Corner of Section 22.
Corner position is established at the intersection of a straight lines between opposing Quarter corners of the perimeter of Section 22. Recovered 1 1/2" diameter iron pipe N17°E 10.85 feet from the monument.

Corner references:

Sugar Maple	8"	N12°W	18.71 feet
Sugar Maple	4"	S45°W	5.51 feet
Steel sign post		Northwest	1.0 feet

5. South Sixteenth Corner Between Sections 21 and 22.
 Corner position is established at the midpoint and on line between the West Quarter corner and the Southwest Section corner of Section 22. Recovered 1 1/2" diameter iron pipe S74°W 1049 feet from the monument.

Corner references:

Balsam	6"	N74°E	15.29 feet
Balsam	6"	N40°W	6.77 feet
Steel sign post		Northwest	0.9 feet

6. Southwest Sixteenth Corner of Section 22.
 Corner position is established at the intersection of a straight lines between opposing sixteenth corners on the perimeter of the Southwest Quarter of Section 22.

Corner references:

Sugar Maple	5"	N40°W	6.88 feet
Sugar Maple	4"	S28°W	7.21 feet
Steel sign post		Northwest	0.8 feet

7. East Sixteenth Corner Between Sections 22 and 27.
 Corner position is established at the midpoint and on line between the South Quarter corner and the Southeast Section corner of Section 22.

Corner references:

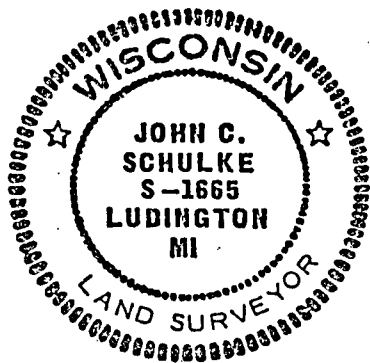
Balsam	5"	N86°E	32.44 feet
Spruce	10"	S60°W	28.38 feet
Steel sign post		Southeast	0.9 feet

SURVEYOR'S AFFIDAVIT

State of Wisconsin)
 County of Forest)^{ss}

I, John C. Schulke, a Cadastral Surveyor, and a Registered Land Surveyor in the State of Wisconsin, hereby certify that I have surveyed and subdivided Section 22, Township 36 North, Range 16 East, Fourth Principal Meridian, State of Wisconsin.

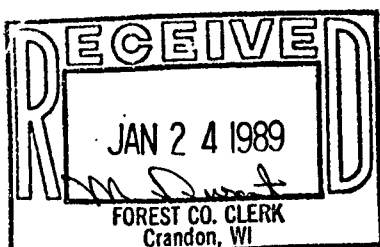
The plat map and survey notes herewith are a correct representation of the land surveyed and subdivided. I have surveyed and subdivided said section in accordance with the rules for the survey of the public lands and with the statutes of the State of Wisconsin.



John C. Schulke
 4604 So. Pere Marquette Rd.
 Ludington, MI 49431
 R.L.S. State of Wisconsin
 Date of Survey 1988
 Certificate S-1665

John C. Schulke

Dec - 2nd, 1988



Plat ready for filing *Dale B. Stage*
 District Ranger