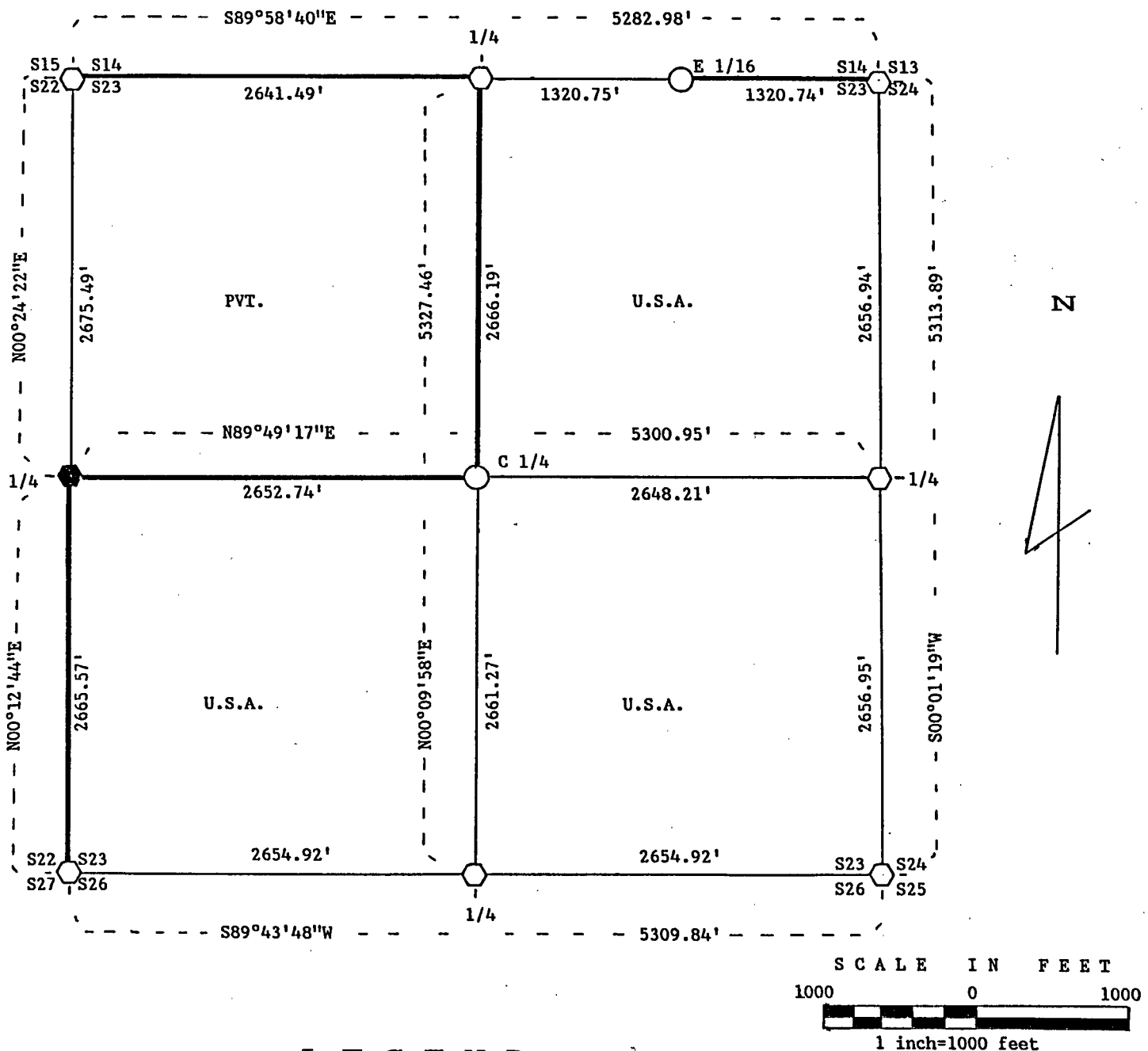


Stock No. 26273

Sheet 1 of 4

**PLAT OF SURVEY FOR CERTIFIED LAND CORNER  
 RESTORATION AND ESTABLISHMENT  
 OF U.S. GOVERNMENT LAND**

BEING THE CORNERS FOR THE NE 1/4, THE SW 1/4 AND THE SE 1/4.  
 SECTION 23, T36N, R16E, FOURTH PRINCIPAL MERIDIAN  
 FOREST COUNTY, STATE OF WISCONSIN



**L E G E N D**

- Boundary line marked to standard.
- 1" diameter aluminum pipe monument, 36" long with an aluminum cap stamped to identify the corner.
- ◕ 2 1/2" diameter aluminum pipe monument, 30" or 36" long with an aluminum cap stamped to identify the corner.
- 2 1/2" diameter aluminum pipe monument, 60" long with an aluminum cap stamped to identify the corner.

NOTE: Bearings are referenced to polaris observations.

## SURVEY NOTES

This survey was made by John C. Schulke, a Registered Land Surveyor in the State of Wisconsin, for the U.S. Department of Agriculture, Forest Service. The purpose of the survey was for recovery, establishing, marking and perpetuating the corners and boundary lines of the U.S. Government Land on the perimeter and within Section 23, Township 36 North, Range 16 East, Fourth Principal Meridian, Forest County, Wisconsin.

The Original Government Subdivision survey of this township was done by James McBride in 1858.

The bearings between corner positions are true bearings as determined by reference to polaris observations. The accuracy of this survey exceeds the State requirement for closure of 1 in 3,000. Corners recovered or established by this survey are marked as described in the map legend. Each monumented corner is referenced to blazed, scribed, painted and tagged bearing trees. Tie bearings are magnetic, and not corrected for declination.

## CORNERS RECOVERED AND RESTORED

1. Section Corner Common to Sections 14, 15, 22 and 23.  
Corner monument recovered in place and as described on a U.S. Public Land Survey Monument Record form filed in the Forest County Register of Deed's Office, Document #134691, in 1988 by Alan Harrison (RLS-1651).
2. Quarter Corner Between Sections 14 and 23.  
Corner restored by proportional methods. Center of a two track is South 89 feet from the monument.

## Corner references:

Iron pipe	1 1/2"X2 1/2'	N40°E	24.45 feet
Iron pipe	1 1/2"X2 1/2'	S50°E	15.15 feet
Chiseled			
"X" on rock	3 1/2'X3 1/2'	S12°W	77.22 feet
"X" on rock	3 1/2'X1 1/2'	N49°W	29.91 feet
Steel sign post		West	1.5 feet

3. Section Corner Common to Sections 13, 14, 23 and 24.  
Corner monument recovered in place and is setting in a mound of stones. Monument set by Milo Stefan in 1982.

## Recovered corner references:

Basswood	20"	N15°E	46.78 feet
Sugar Maple	7"	N89°E	9.57 feet
Sugar Maple	6"	N39°W	37.45 feet
Steel sign post		West	1.3 feet

## New corner references:

Sugar Maple	6"	N45°E	43.85 feet
-------------	----	-------	------------

4. Quarter Corner Between Sections 23 and 24.  
Corner restored by proportional methods. The Forest Service Road #2367 is West 135.1 feet from the monument.

## Corner references:

Aspen	3"	S12°E	5.28 feet
Chiseled			
"X" on rock	3'X4'	S86°W	22.10 feet
"X" on rock	2'X3'	N35°E	11.92 feet
Steel sign post		North	0.8 feet

5. Section Corner Common to Sections 23, 24, 25 and 26.  
Corner monument recovered in place and as described on a U.S. Public Land Survey Monument Record form filed in the Forest County Register of Deed's Office, Document #127223, in 1984 by Alan Harrison (RLS-1651).
6. Quarter Corner Between Sections 23 and 26.  
Corner restored by proportional methods.

## Corner references:

Sugar Maple	7"	S04°E	12.66 feet
Sugar Maple	9"	N77°W	24.55 feet
Sugar Maple	7"	S46°W	35.67 feet
Sugar Maple	10"	N67°E	22.05 feet
Steel sign post		Southwest	1.0 feet

7. Section Corner Common to Sections 22, 23, 26 and 27.  
Corner monument recovered in place and as described on a U.S. Public Land Survey Monument Record form filed in the Forest County Register of Deed's Office, Document 133450, in 1987 by Alan Harrison (RLS-1651).
8. Quarter Corner Between Sections 22 and 23.  
Recovered both GLO bearing trees.

## Recovered corner references:

Cedar stump		S22°E	5.3 feet
Cedar stump		S48°W	8.6 feet

## New Corner references:

Aspen	9"	N30°W	64.58 feet
Black Ash	4"	N14°E	49.32 feet
Black Cherry	6"	S19°E	78.12 feet
Balsam	8"	S11°W	76.35 feet
Steel sign post		Southeast	1.0 feet

## CORNERS ESTABLISHED

1. East Sixteenth Corner Between Sections 14 and 23.  
Corner position is established at the midpoint and on line between the North Quarter corner and the Northeast Section corner of Section 23.

## Corner references:

Balsam	7"	N13°E	36.01 feet
Balsam	6"	N86°E	46.08 feet
Steel sign post		Southwest	0.9 feet

2. Center Quarter Corner of Section 23.  
Corner position is established at the intersection of a straight lines between opposing Quarter corners of the perimeter of Section 23. Monument is placed in a mound of stones. Scribed wood post painted blue is N06°E 12.6 feet.

## Corner references:

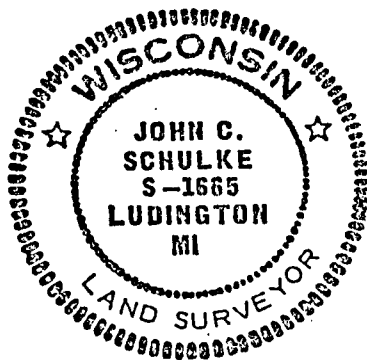
Black Cherry	7"	S25°E	22.42 feet
Aspen	4"	N20°E	24.49 feet
Steel sign post		Northeast	3.8 feet

SURVEYOR'S AFFIDAVIT

State of Wisconsin)  
County of Forest )<sup>ss</sup>

I, John C. Schulke, a Cadastral Surveyor, and a Registered Land Surveyor in the State of Wisconsin, hereby certify that I have surveyed and subdivided Section 23, Township 36 North, Range 16 East, Fourth Principal Meridian, State of Wisconsin.

The plat map and survey notes herewith are a correct representation of the land surveyed and subdivided. I have surveyed and subdivided said section in accordance with the rules for the survey of the public lands and with the statutes of the State of Wisconsin.



John C. Schulke  
4604 So. Pere Marquette Rd.  
Ludington, MI 49431  
R.L.S. State of Wisconsin  
Date of Survey 1988  
Certificate S-1665

*John C. Schulke*

*Dec 2nd, 1988*

Plat ready for filing

*Dale B. Stoege*  
District Ranger

