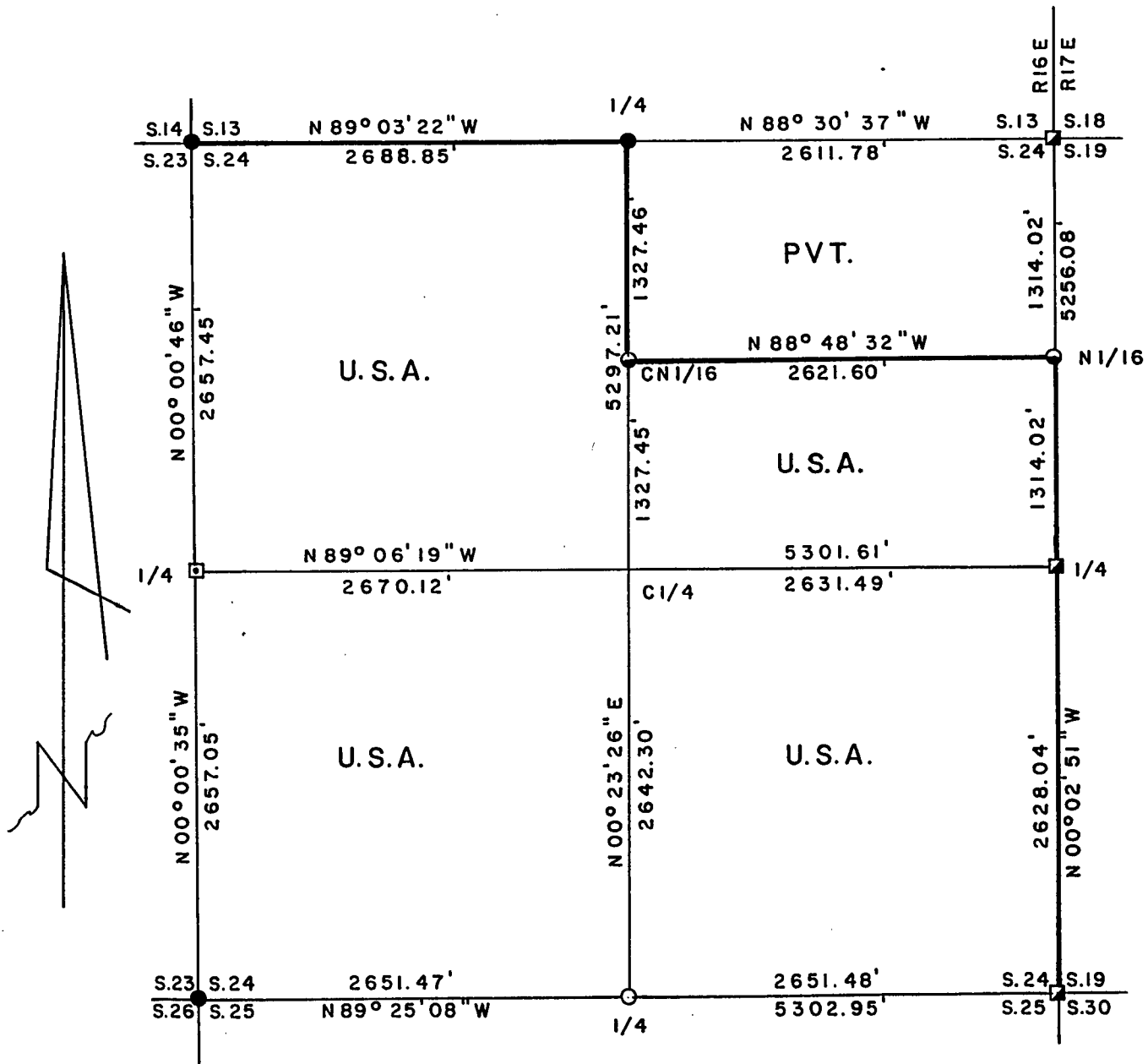
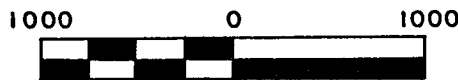


PLAT OF SURVEY FOR CERTIFIED LAND CORNER  
RESTORATION AND ESTABLISHMENT  
BEING THE CORNERS FOR THE SE1/4, SW1/4, NW1/4, AND S1/2 - NE1/4  
OF SECTION 24, T.36N.R.16E., FOURTH PRINCIPAL MERIDIAN  
COUNTY OF FOREST, STATE OF WISCONSIN

Sheet 1 of 4



SCALE 1" = 1000'



Scale in feet  
LEGEND

- 2½ inch diameter aluminum pipe monument with an aluminum cap set by U.S.F.S.
- ◻ 4 inch diameter iron Pipe with brass cap encased in concrete
- ◻ 2½ inch diameter aluminum pipe monument with an aluminum cap set by John C. Schulke
- 2½ inch diameter aluminum pipe monument 36 inches long with an aluminum cap
- 1 inch diameter aluminum pipe monument 36 inches long with an aluminum cap
- Boundary line marked to Forest Service Standards

SURVEY NOTES

This survey was made by Gary L. Pisoni, a Registered Land Surveyor in the State of Wisconsin, for the U.S.D.A., Forest Service, for the purpose of recovering, restoring, establishing, marking, and perpetuating the corners and boundary lines of U.S. Government Land on the perimeter and within Section 24, Township 36 North, Range 16 East, Fourth Principal Meridian, Forest County, State of Wisconsin, as shown on the plat map herewith.

The Original Government Township Lines were done Artemas Curtis, U.S. Deputy Surveyor in September of 1857. The original Government Sub-division of this township was done by James McBride, U.S. Deputy Surveyor in July of 1858.

The bearings between corner positions are true bearings referenced to the West One-Half of the South section line of Section 11, as determined by a solar observation by Charles F. Clark of Coleman Engineering Co. from a Plat of Survey of 1991 of Section 11. All distances shown thereon are in feet and hundredths of feet. The control traverse was measured by use of an electronic distance measuring equipment.

The accuracy of this survey exceeds the State requirements of 1 in 3000.

The field notes and a copy of the Plat of Survey are on file in the Forest Supervisor's Office at Rhinelander, Wisconsin.

CORNERS RECOVERED AND RESTORED1. Northwest Section Corner

In 1988, John Schulke, RLS found the corner as described in Milo Stefan's field notes of 1982. Milo Stefan found an iron bolt and replaced it with a 2 1/2 inch x 36 inch aluminum monument with a stamped cap.

1982 Milo Stefan's Corner References:

Basswood	18"	N 08°E	46.80 feet
Sugar Maple	6"	N 89°E	9.64 feet
Sugar Maple	5"	N 48°W	37.55 feet
Steel Sign Post		West	1.30 feet

1988 Corner References:

Basswood	20"	N 15°E	46.78 feet
Sugar Maple	7"	N 89°E	9.57 feet
Sugar Maple	6"	N 39°W	37.45 feet
Sugar Maple	6"	N 45°E	43.85 feet
Steel Sign Post		West	1.30 feet

2. North Quarter Corner

In 1982, Milo E. Stefan, RLS restored the corner position from a recovered 3/4" x 36" iron rod as local evidence. Iron rod matched stump holes at bearing and distance of original bearing trees. Stefan replaced iron rod with 2" aluminum pipe monument with a stamped tablet at the corner position.

1982 Corner References:

Sugar Maple	6"	S 01°E	11.20 feet
Sugar Maple	6"	S 53°W	21.81 feet
Yellow Birch	8"	N 30°W	29.62 feet
Steel Sign Post		West	1.50 feet

3. Northeast Section Corner

In an October 1936 - May 1937 survey, F.P. Gould & B.F. Hammes, Deputy County Surveyors, restored the corner position from a recovered hardwood post, 2" iron pipe and four sugar maple stumps that checked for B.T.'s showing axe marks.

## 1993 Corner References:

Sugar Maple	7"	N 44°E	27.80 feet
Sugar Maple	7"	S 34°E	12.45 feet
Sugar Maple	8"	S 38°W	12.19 feet
Sugar Maple	8"	N 40°W	18.81 feet
Steel Sign Post	6'	West	0.90 feet

4. East Quarter Corner

In an October 1936 - May 1937 survey, F.P. Gould & B.F. Hammes, Deputy County Surveyors, restored the corner position and set a 4" Brass capped pipe monument encased in concrete.

## 1993 Corner References:

Iron Bar Existing	1"	S 41°E	7.64 feet
Iron Bar ( " )	1"	S 33°W	7.57 feet
Iron Bar ( " )	1"	N 38°W	24.50 feet
Basswood New	7"	N 56°E	11.65 feet
Sugar Maple New	16"	S 45°E	9.64 feet
Sugar Maple New	5"	S 30°W	9.76 feet
Sugar Maple New	13"	N 36°W	25.90 feet
Steel Sign Post	6'	N 03°E	2.70 feet

5. Southeast Section Corner

In 1984, Milo E. Stefan, RLS. recovered the corner position marked by a 4" iron pipe with Marinette County Brass Cap, as set by Frank Gould and Bernard Hammes in 1936-37. They set the corner from original bearing tree evidence.

## Corner References:

Aspen	4"	N 79°E	94.81 feet
Spruce	8"	S 72°E	128.00 feet
Cherry	3"	S 70°W	102.56 feet
Cherry	10"	N 34°W	73.45 feet
Steel Sign Post		South	1.85 feet

6. South Quarter Corner

Corner restored on line and midway between the Southwest Section Corner and Southeast Section Corner.

## Corner References:

Sugar Maple	7"	N 20°W	24.48 feet
Sugar Maple	7"	N 39°E	18.66 feet
White Ash	8"	S 60°E	29.19 feet
Basswood	6"	S 10°E	43.90 feet
Steel Sign Post	6'	S 38°W	0.94 feet

7. Southwest Section Corner

In 1984, Alan Harrison, RLS. restored the corner position from original corner evidence set by James McBride in 1858, and a flue pipe set by Goodman Lumber in 1925. Harrison placed aluminum pipe monument with stamped cap at the corner position.

## Corner References:

Sugar Maple	5"	N 26°E	91.97 feet
Basswood	6"	S 48°E	50.17 feet
Basswood	6"	S 71°W	20.24 feet
Basswood	10"	N 14°W	74.49 feet
Steel Sign Post		East	1.48 feet

Stock No. 26273

Sheet 4 of 4

8. West Quarter Corner

In 1988, John Schulke, RLS. restored the corner position after no original corner evidence was found. Schulke placed an aluminum pipe monument with a stamped cap at the corner position.

## Corner References:

Aspen	3"	S 12°E	5.28 feet
Chiseled "X"			
on rock	3'X4'	S 86°W	22.10 feet
Chiseled "X"			
on rock	3'X4'	N 35°E	11.92 feet
Steel Sign Post		North	0.80 feet

CORNERS ESTABLISHED1. Center North Sixteenth Corner

Corner established on line and midway between the North Quarter corner and the Center Quarter corner in Section 24.

## Corner References:

Sugar Maple	7"	N 17°E	32.43 feet
Sugar Maple	13"	N 44°W	29.80 feet
Iron Pipe	1 1/4"	N 69°W	17.00 feet
Steel Sign Post		S 41°W	1.12 feet

2. North Sixteenth Corner between Sections 24 and 19

Corner established on line and midway between the Northeast Section Corner and East Quarter Corner of Section 24.

## Corner References:

Sugar Maple	8"	N 07°W	32.57 feet
Sugar Maple	12"	S 44°E	25.49 feet
Iron Pipe	1 1/4"	N 33°W	2.05 feet
Steel Sign Post		S 70°W	0.82 feet

SURVEYOR'S CERTIFICATE

State of Wisconsin)ss  
County of Forest)

I, Gary L. Pisoni, a Cadastral Surveyor, and a Registered Land Surveyor in the State of Wisconsin, hereby certify that I have surveyed and sub-divided Section 24, Township 36 North, Range 16 East, Fourth Principal Meridian, State of Wisconsin.

The plat map and survey notes herewith are a correct representation of the land surveyed and divided. I have surveyed and sub-divided said section in accordance with the rules for the survey of public lands and with the statutes of the State of Wisconsin.

Date of Survey: 1993-94

*Gary L. Pisoni*  
\_\_\_\_\_  
Cadastral Surveyor  
R.L.S. State of Wisconsin  
Certificate S-1634

