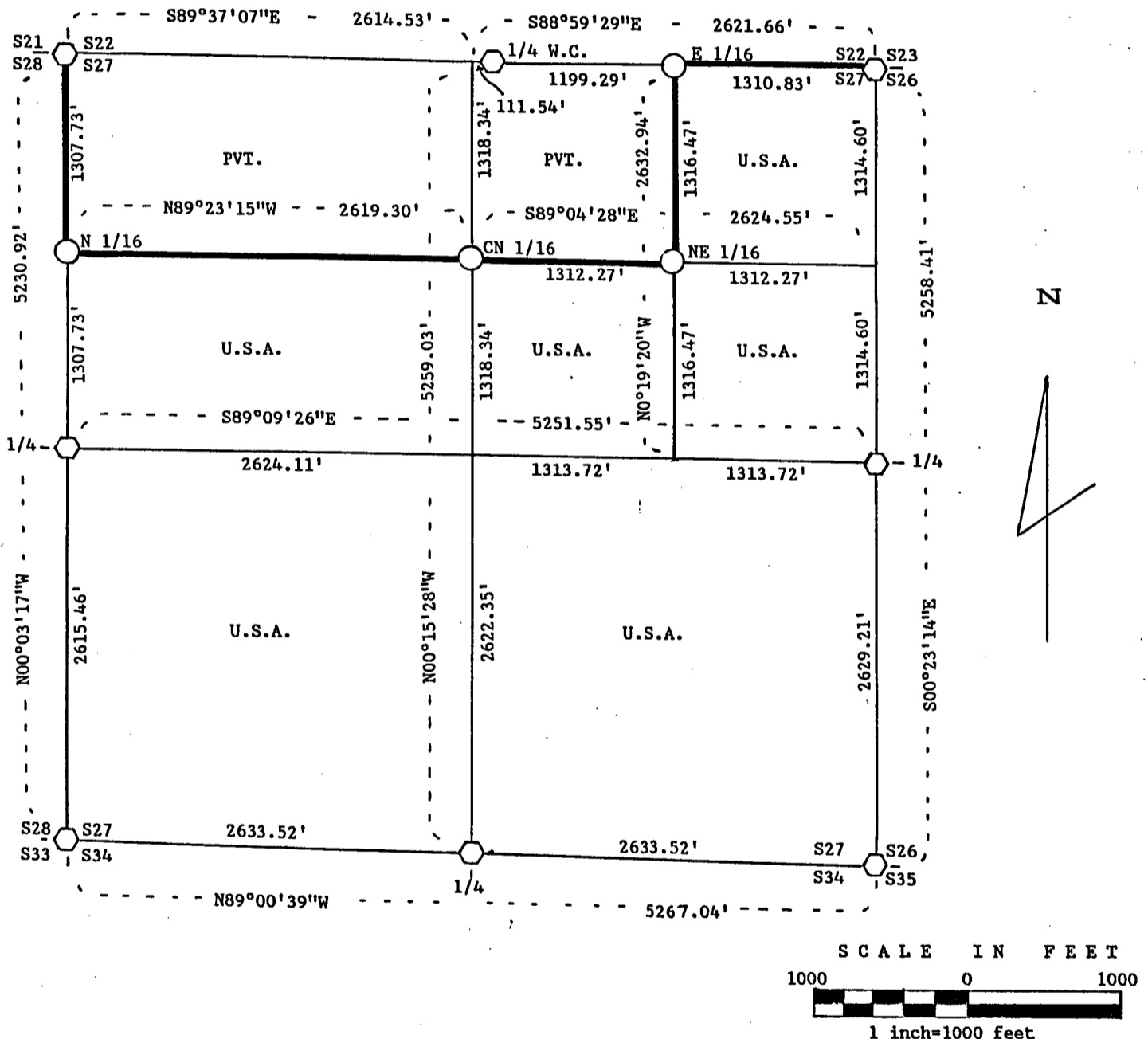


Stock No. 26273

Sheet 1 of 4

PLAT OF SURVEY FOR CERTIFIED LAND CORNER RESTORATION AND ESTABLISHMENT OF U.S. GOVERNMENT LAND

BEING THE CORNERS FOR THE SOUTH 1/2 OF THE NW 1/4, THE NE 1/4 OF THE NE 1/4, THE SOUTH 1/2 OF THE NE 1/4, THE SW 1/4 AND THE SE 1/4.
SECTION 27, T36N, R16E, FOURTH PRINCIPAL MERIDIAN
FOREST COUNTY, STATE OF WISCONSIN



LEGEND

- Boundary line marked to standard.
- 1" diameter aluminum pipe monument, 36" long with an aluminum cap stamped to identify the corner.
- ⬡ 2 1/2" diameter aluminum pipe monument, 30" or 36" long with an aluminum cap stamped to identify the corner.

NOTE: Bearings are referenced to polaris observations.

SURVEY NOTES

This survey was made by John C. Schulke, a Registered Land Surveyor in the State of Wisconsin, for the U.S. Department of Agriculture, Forest Service. The purpose of the survey was for recovery, establishing, marking and perpetuating the corners and boundary lines of the U.S. Government Land on the perimeter and within Section 27, Township 36 North, Range 16 East, Fourth Principal Meridian, Forest County, Wisconsin.

The Original Government Subdivision survey of this township was done by James McBride in 1858.

The bearings between corner positions are true bearings as determined by reference to polaris observations. The accuracy of this survey exceeds the State requirement for closure of 1 in 3,000. Corners recovered or established by this survey are marked as described in the map legend. Each monumented corner is referenced to blazed, scribed, painted and tagged bearing trees. Tie bearings are magnetic, and not corrected for declination.

CORNERS RECOVERED AND RESTORED

1. Section Corner Common to Sections 21, 22, 27 and 28.
Corner monument recovered in place and as described on the U.S. Public Land Survey Monument Record form filed in the Forest County Register of Deed's Office, Document #129880, in 1986 by Alan Harrison (RLS-1651).
2. Quarter Corner Between Sections 22 and 27.
Witness Corner monument recovered in place and as described on the U.S. Public Land Survey Monument Record form filed in the Forest County Register of Deed's Office, Document #132696, in 1987 by Alan Harrison (RLS-1651).
3. Section Corner Common to Sections 22, 23, 26 and 27.
Corner monument recovered in place and as described on the U.S. Public Land Survey Monument Record form filed in the Forest County Register of Deed's Office, Document #133450, in 1987 by Alan Harrison (RLS-1651).
4. Quarter Corner Between Sections 26 and 27.
Corner restored by proportional methods. The center of a two track road is 41 feet Northeast.

Corner references;

Aspen	6"	N10°E	13.57 feet
Black Cherry	6"	S60°E	32.53 feet
Spruce	3"	S40°E	52.39 feet
Aspen	10"	N56°W	75.47 feet
Steel sign post		Southwest	1.1 feet

5. Section Corner Common to Sections 26, 27, 34 and 35.
Corner monument recovered in place and as described on the U.S. Public Land Survey Monument Record form filed in the Forest County Register of Deed's Office, Document #127225, in 1984 by Alan Harrison (RLS-1651).
6. Quarter Corner Between Sections 27 and 34.
Corner restored by proportional methods.

Corner references:

Sugar Maple	7"	S20°E	118.42 feet
Sugar Maple	5"	S10°E	119.49 feet
Basswood	6"	S08°W	105.98 feet
Chiseled "X" on rock	7'X5 1/2'	S05°E	45.45 feet
Steel sign post		West	1.0 feet

7. Section Corner Common to Sections 27, 28, 33 and 34.
Corner monument recovered in place and as described on the U.S. Public Land Survey Monument Record form filed in the Forest County Register of Deed's Office, Document #127224, in 1984 by Alan Harrison (RLS-1651).
8. Quarter Corner Between Sections 27 and 28.
Corner restored by proportional methods.

Corner references:

Spruce	4"	N25°W	21.91 feet
Cherry	8"	Due East	51.01 feet
Cherry	10"	S07°E	70.33 feet
chiseled "X" on rock 4'X2 1/2'		S83°W	44.02 feet
Steel sign post		West	0.6 feet

CORNERS ESTABLISHED

1. East Sixteenth Corner Between Sections 22 and 27.
Corner position is established at the midpoint and on line between the North Quarter corner and the Northeast Section corner of Section 27.

Corner references:

Balsam	5"	N86°E	32.44 feet
Spruce	10"	S60°W	28.38 feet
Steel sign post		Southeast	0.9 feet

2. Northeast Sixteenth Corner of Section 27.
Corner position is established at the intersection of a straight lines between opposing sixteenth corners on the perimeter of the Northeast Quarter of Section 27.

Corner references:

Black Cherry	10"	S45°E	36.00 feet
Black Cherry	8"	S77°W	23.70 feet
Steel sign post		Southeast	1.2 feet

3. Center North Sixteenth Corner of Sections 27.
Corner position is established at the midpoint and on line between the North Quarter corner and the Center Quarter corner of Section 27. The monument is placed in a mound of stones.

Corner references:

Sugar Maple	10"	N38°E	39.04 feet
Balsam	7"	S40°E	16.62 feet
Steel sign post		West	2.4 feet

4. North Sixteenth Corner Between Sections 27 and 28.
Corner position is established at the midpoint and on line between the West Quarter corner and the Northwest Section corner of Section 27.

Corner references:

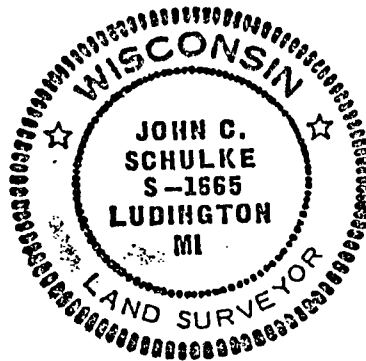
Aspen	12"	N45°W	16.85 feet
Balsam	9"	N86°E	15.12 feet
Steel sign post		East	1.0 feet

SURVEYOR'S AFFIDAVIT

State of Wisconsin)
County of Forest)ss

I, John C. Schulke, a Cadastral Surveyor, and a Registered Land Surveyor in the State of Wisconsin, hereby certify that I have surveyed and subdivided Section 27, Township 36 North, Range 16 East, Fourth Principal Meridian, State of Wisconsin.

The plat map and survey notes herewith are a correct representation of the land surveyed and subdivided. I have surveyed and subdivided said section in accordance with the rules for the survey of the public lands and with the statutes of the State of Wisconsin.



John C. Schulke
4604 So. Pere Marquette Rd.
Ludington, MI 49431
R.L.S. State of Wisconsin
Date of Survey 1988
Certificate S-1665

John C. Schulke

Dec 2nd, 1988

Plat ready for filing

Dale B. Staagy
District Ranger

