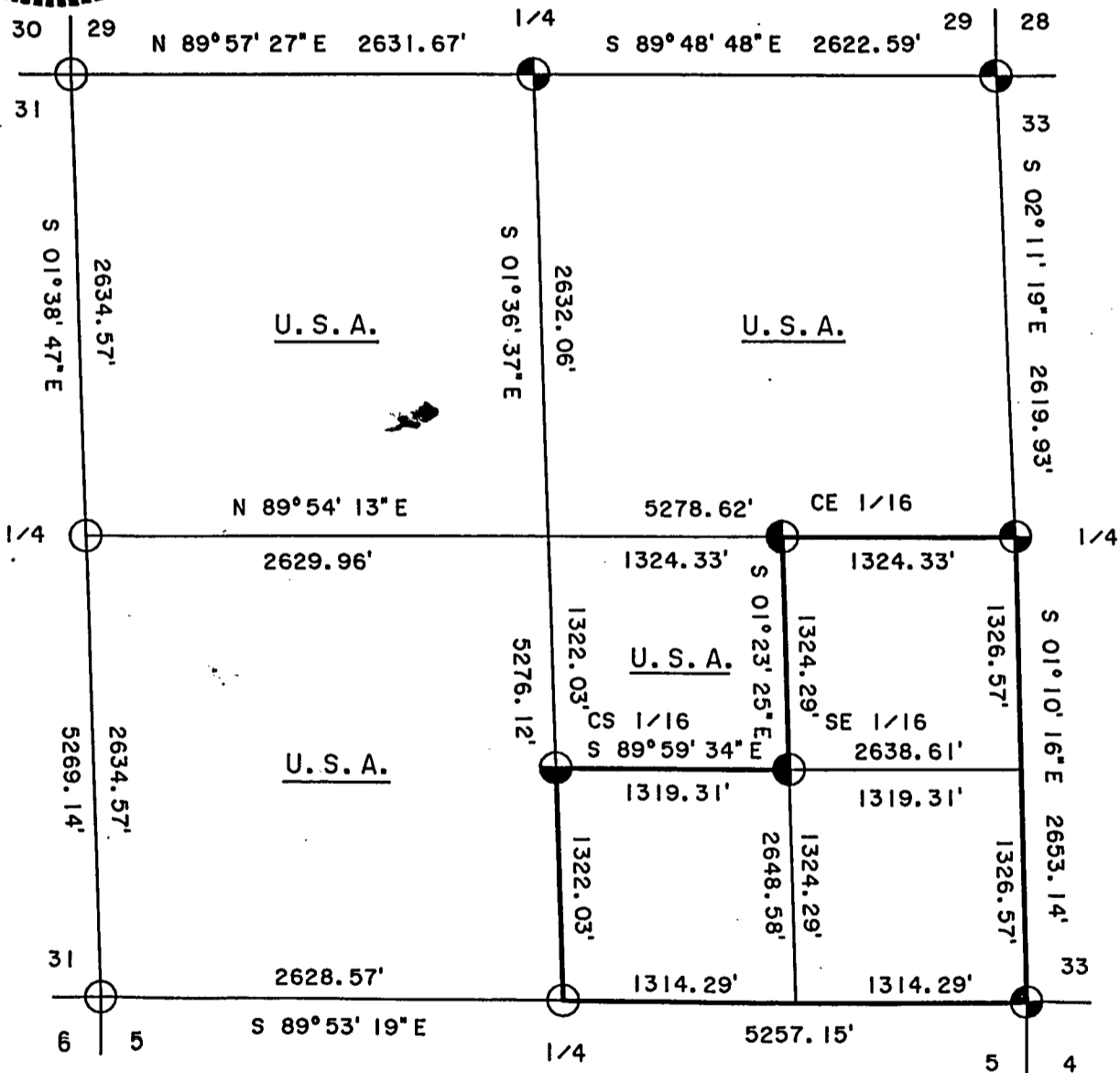
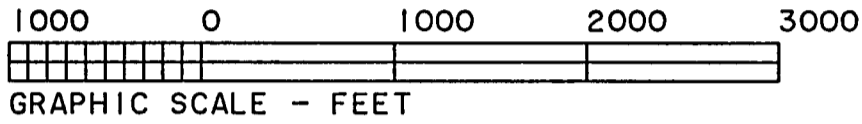
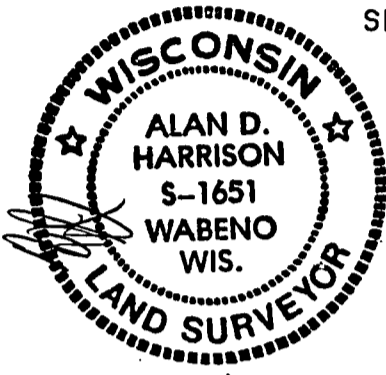


PLAT OF SURVEY U. S. GOVERNMENT LANDS

BEING THE WEST 1/2; THE N.E. 1/4; AND THE N.W. 1/4, S.E. 1/4;
SECTION 32; TOWNSHIP 36 NORTH; RANGE 16 EAST;
FOURTH PRINCIPAL MERIDIAN;
FOREST COUNTY, WISCONSIN.



LEGEND

- ⊕ 2 1/2" ALUMINUM MONUMENT, FOUND IN PLACE.
- 2 1/2" X 36" ALUMINUM MONUMENT, SET THIS SURVEY.
- ◐ 1" X 36" ALUMINUM MONUMENT, SET THIS SURVEY.
- ◑ 1" X 60" ALUMINUM MONUMENT, SET THIS SURVEY.
- MARKED PROPERTY BOUNDARY OF U. S. GOVERNMENT LANDS.

SURVEY NOTES

This survey was made by the U.S. Department of Agriculture, Forest Service, for the purpose of restoring and establishing corners on the perimeter of Section 32 for establishing subdivisional corners within Section 32 and for locating and marking the boundaries of U.S. Government land on their perimeter and within Section 32 Township 36 North, Range 16 East, 4th Principal Meridian, Forest County, Wisconsin.

The U.S. Government lands in this section were acquired in 1935.

The original government subdivision survey of this township was made in 1858. Township lines were surveyed in 1857 by Artemas Curtis. Sections 29 and 31 were surveyed in 1911 by J. Melindy.

The corner positions recovered, restored and established by this survey are marked by the monument described in the map legend.

The corner positions established were located to an accuracy of one part in 5000.

The bearings between corner positions are true bearings as determined by solar observations.

The field notes of this survey and a copy of this plat are on file in the Forest Supervisor's Office at Rhinelander, Wisconsin.

CORNERS RECOVERED OR RESTORED1. Corner Common to Sections 29,30,31 and 32.

Corner restored from original bearing tree evidence in concurrence with a post hole from J. Melindys' 1911 survey.

Corner References:

Sugar Maple	9"	S.85°E.	12.04 feet
Basswood	7"	S.20°E.	39.46 feet
Sugar Maple	15"	S.69°W.	43.34 feet
Sugar Maple	6"	N.30°W.	8.11 feet
Steel Sign Post		South	1.43 feet

2. Corner Common to Sections 28, 29,32 and 33.

Corner found monumented by Alan Harrison, R.L.S. Certificate on file in Forest County.

3. Corner Common to Sections 4, 5, 32 and 33, T35 - 36N.

Corner found monumented by Milo Stefan, R.L.S. Certificate on file in Forest County.

4. Corner Common to Sections 5, 6, 31 and 32, T35 - 36N.

Corner restored at proportionate distance and on line between the Southeast Section Corner of Section 32 and the South Quarter Corner of Section 31.

Corner References:

Sugar Maple	8"	North	42.05 feet
Sugar Maple	8"	East	38.13 feet
Basswood	7"	S.50°W.	19.90 feet
Sugar Maple	5"	N.58°W.	44.62 feet
Steel Sign Post		West	0.97 feet

5. Quarter Corner Common to Sections 29 and 32.

Corner found monumented by Alan Harrison, R.L.S. Certificate on file in Forest County.

6. Quarter Corner Common to Sections 32 and 33.

Corner found monumented by Alan Harrison, R.L.S. Certificate on file in Forest County.

7. Quarter Corner Common to Sections 31 and 32.

Corner restored at proportionate distance and on line between the Northwest and Southwest Section Corners of Section 32.

Corner References:

Hemlock	11"	S.28°E.	51.90 feet
Balsam	9"	S.40°W.	50.62 feet
Aspen	4"	N.23°W.	9.06 feet
Steel Sign Post		East	0.89 feet

8. Quarter Common to Sections 5 and 32 T35 - 36N.

Corner restored at proportionate distance and on a line between the Southeast and Southwest Section Corners of Section 32.

Corner References:

Spruce	4"	N.50°E.	10.88 feet
Spruce	5"	S.02°E.	7.49 feet
Spruce	6"	N.85°W.	8.64 feet
Steel Sign Post		North	1.22 feet

CORNERS ESTABLISHED

1. Center-East One-Sixteenth Corner of Section 32.

Corner established at mid-point and on line between the Center Quarter Corner and the East Quarter Corner.

Corner References:

Red Maple	7"	N.80°E.	8.48 feet
Spruce	7"	S.26°W.	15.88 feet
Steel Sign Post		Northwest	1.00 feet

2. Southeast One-Sixteenth Corner of Section 32.

Corner established at the intersection of straight lines between opposing one-sixteenth corners on the perimeter of the Southeast Quarter of Section 32.

Corner References:

Spruce	9"	S.11°W.	9.38 feet
Spruce	5"	N.36°W.	9.69 feet
Steel Sign Post		Northwest	0.90 feet

3. Center - South One-Sixteenth Corner of Section 32.

Corner established at mid-point and on line between the Center Quarter Corner and the South Quarter Corner.

Corner References:

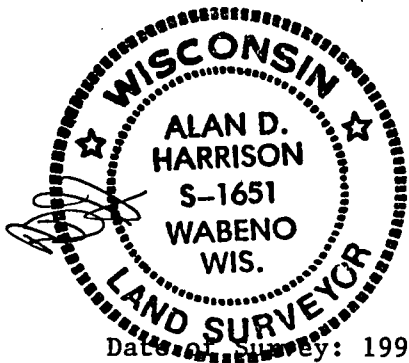
Spruce	6"	S.50°W.	18.30 feet
Spruce	11"	N.71°W.	14.73 feet
Steel Sign Post		Northwest	1.16 feet

SURVEYOR'S AFFIDAVIT

State of Wisconsin]
County of Forest]

I, Alan D. Harrison, Land Surveyor, U.S.D.A. Forest Service and a Registered Land Surveyor in the State of Wisconsin, do hereby certify that I have surveyed and subdivided Section 32, Township 36 North, Range 16 East, Fourth Principal Meridian, State of Wisconsin.

The plat map and the notes herewith are a correct representation of the land surveyed and divided. I have surveyed and subdivided said section in accordance with the rules for survey of the public lands and with the statutes of the State of Wisconsin.



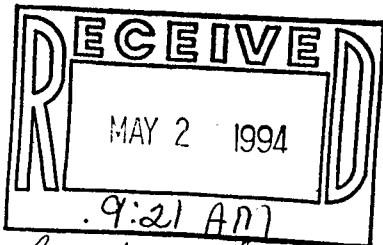
Alan D. Harrison

LAND SURVEYOR, U.S.D.A Forest Service
R.L.S. Number S-1651
State of Wisconsin

Plat Ready for Filing:

Arthur Sprague

for District Ranger



Sandra L. Heddo
clk / Bkpr.