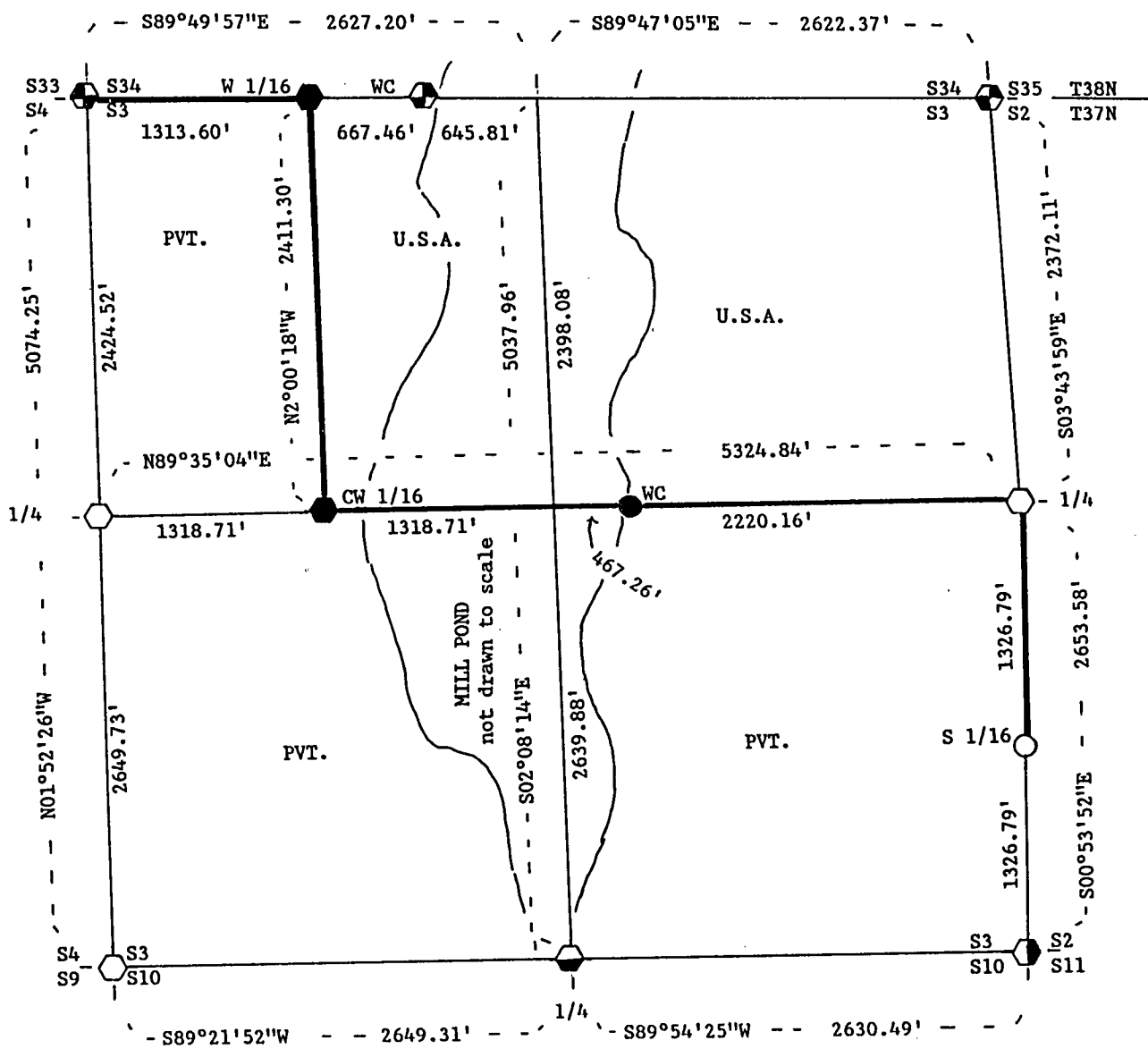
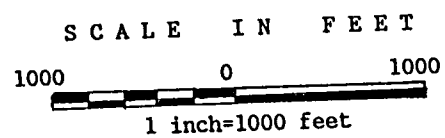
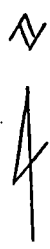


PLAT OF SURVEY FOR CERTIFIED LAND CORNER RESTORATION AND ESTABLISHMENT OF U.S. GOVERNMENT LAND

BEING THE CORNERS FOR THE EAST 1/2 OF THE NORTHWEST 1/4 AND THE NORTHEAST 1/4. SECTION 3, T37N, R12E, FOURTH PRINCIPAL MERIDIAN FOREST COUNTY, STATE OF WISCONSIN



FOREST CO SURVEYOR
FILE # 371203-1989(103)
DATE _____ BY _____



LEGEND

- Boundary line marked to standard.
- 1" diameter aluminum pipe monument, 36 inches long with an aluminum cap stamped to identify the corner.
- 1" dia. witness aluminum pipe monument, 60" long with an aluminum cap stamped to identify the location of the corner.
- ⬡ 2 1/2" dia. aluminum pipe monument, 36 inches long with an aluminum cap stamped to identify the corner.
- ⬢ 2 1/2" dia. aluminum pipe monument, 60 inches long with an aluminum cap stamped to identify the corner.
- ⬤ Iron post, 3 ft. long, 2" dia., with brass cap stamped to identify the corner.
- ⬥ Railroad spike, 0.3 ft. below the surface of the black top road, with a 2 1/2" dia. witness aluminum magnetic cap monument, 36 inches long with an aluminum cap stamped to identify the location of the corner.
- ⬦ 1 1/2" dia. iron pipe with a brass cap stamped to identify the corner.
- ⬧ Concrete monument with a brass tablet stamped to identify the corner.

NOTE: Bearings are referenced to solar observations.

Stock No. 26273

Sheet 2 of 4

SURVEY NOTES

This survey was made by John C. Schulke, a Registered Land Surveyor in the State of Wisconsin, for the U.S. Department of Agriculture, Forest Service. The purpose of the survey was for recovery, establishing, marking and perpetuating the corners and boundary lines of the U.S. Government Land on the perimeter and within Sections 3, Township 37 North, Range 12 East, Fourth Principal Meridian, Forest County, Wisconsin.

The original Government survey of the township boundary was done by Alfred Millard, U.S. Deputy Surveyor, in May and June of 1858. The original Government subdivision survey of this township was done by William E. Daugherty in 1859. A Dependent Resurvey was done by Wesson Cook and approved by the General Land Office in 1937 for the North township line and the North two miles of the East township line.

The bearings between corner positions are true bearings as determined by reference to solar observations. The accuracy of this survey exceeds the State requirement for closure of 1 in 3,000. Corners recovered or established by this survey are marked as described in the map legend. Each monumented corner is referenced to blazed, scribed, painted and tagged bearing trees. Tie bearings are magnetic, and not corrected for declination.

CORNERS RECOVERED AND RESTORED

1. Section Corner Common To Sections 3, 4, 33 and 34.
Corner monument recovered in place and as described on the U.S. Public Land Survey Monument Record form filed in the Forest County Register of Deed's Office, Document #132170, in Jan. 1987 by John Schulke (S-1665).
2. Quarter Corner Between Sections 3 and 34.
Corner monument recovered in place. Set and tied the steel sign post to the monument. No corner references available.
3. Section Corner Common To Sections 2, 3, 34 and 35.
Corner monument recovered in place. Monument in a mound of stones.

Recovered corner references:

Aspen stump hole		N01°W	15.2 feet
Aspen stump		N25°E	23.1 feet
Aspen stump		S58°E	6.6 feet

New corner references:

Sugar Maple	8"	N34°W	22.24 feet
Sugar Maple	5"	N47°E	31.97 feet
Sugar Maple	12"	S63°E	19.06 feet
Sugar Maple	6"	S04°W	23.29 feet
Steel sign post		East	1.1 feet

4. Quarter Corner Between Sections 2 and 3.
Set monument at the fence corner which is accepted by the adjacent land owners as the location of the corner. Monument placed in a mound of stones. Fence line running West and South from the monument.

Corner references:

Sugar Maple	7"	S75°W	15.87 feet
Sugar Maple	8"	N20°E	26.91 feet
Clump of Sugar Maple	6"	S40°E	14.03 feet
Sugar Maple	6"	S34°W	25.67 feet
Steel sign post		North	1.1 feet

Stock No. 26273

Sheet 3 of 4

5. Section Corner Common To Sections 2, 3, 10 and 11.
Found spike in the road in the location described by adjacent land owners
The position has long been accepted by property owners as the corner.
Steel sign post bears South a distance of 0.9 ft. from the witness monument.

Corner references:

Sugar Maple	14"	N62°W	36.54 feet
Twin Sugar Maple	10"	N78°E	54.48 feet
Iron pipe	1"	N02°W	21.20 feet
Witness monument	2 1/2"	S4°45'W	33.00 feet

6. Quarter Corner Between Sections 3 and 10.
Corner monument recovered in place and as described on the Certified Land
Corner Restoration form filed in the Forest County Register of Deed's
Office, Document #112379, in 1977 by William Cochrane (RLS-1107).
7. Section Corner Common To Sections 3, 4, 9 and 10.
Corner monument recovered in place and as described on the U.S. Public
Land Survey Monument Record form filed in the Forest County Register of
Deed's Office, Document #130686, in 1986 by William Cochrane (RLS-1107).
8. Quarter Corner Between Sections 3 and 4.
Corner monument recovered in place and as described on the U.S. Public
Land Survey Monument Record form filed in the Forest County Register of
Deed's Office, Document #132172, in 1987 by John Schulke (RLS-1665).

CORNERS ESTABLISHED

1. West Sixteenth Corner Between Sections 3 and 34.
Corner position is established at the midpoint and on line between the
North Quarter corner and the Northwest Section corner of Section 3.
- Corner references:
- | | | | |
|-----------------|----|-----------|-------------|
| Tamarack | 4" | N88°W | 71.20 feet |
| Tamarack | 5" | S27°W | 112.22 feet |
| Steel sign post | | Northeast | 1.0 feet |
2. Center West Sixteenth Corner of Sections 3.
Corner position is established at the midpoint and on line between the
West Quarter corner and the Center Quarter corner of Section 3. The
West shoreline of Mill Pond bears East a distance of 200 feet from the
monument.
- Corner references:
- | | | | |
|-----------------|----|-----------|------------|
| Tamarack | 7" | N57°W | 77.00 feet |
| Tamarack | 7" | S57°W | 87.75 feet |
| Steel sign post | | Northeast | 0.9 feet |
3. Center Quarter Corner Of Section 3.
Corner position is established at the intersection of the straight lines
between opposing Quarter corners of the perimeter of Section 3. Corner
falls in Mill Pond and set a witness monument. Steel sign post bears
East a distance of 0.8 feet from the witness monument. The East shore
line of Mill Pond bears West a distance of 50 feet from the witness
monument.
- Corner references:
- | | | | |
|------------------|-----|----------|-------------|
| Spruce | 10" | N38°E | 23.71 feet |
| Red Maple | 7" | S82°E | 48.48 feet |
| Witness Monument | 1" | N89°35'W | 467.26 feet |

Stock No. 26273

Sheet 4 of 4

4. South Sixteenth Corner Between Sections 2 and 3.
 Corner position is established at the midpoint and on line between the East Quarter corner and the Southeast Section corner of Section 3. Monument placed in a mound of stones. Fence line running East and West bears South a distance of 1.0 ft. from the monument.

Corner references:

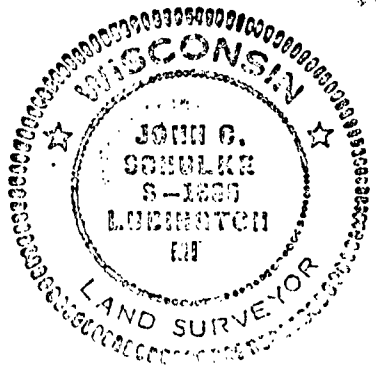
Iron pipe	1 1/4"	S84°22'59"E	12.37 feet
Sugar Maple	6"	S63°W	9.40 feet
Sugar maple	7"	N39°E	39.06 feet
Steel sign post	.	Northeast	0.9 feet

SURVEYOR'S AFFIDAVIT

State of Wisconsin)
 County of Forest)ss

I, John C. Schulke, a Cadastral Surveyor, and a Registered Land Surveyor in the State of Wisconsin, hereby certify that I have surveyed and subdivided Section 3, Township 37 North, Range 12 East, Fourth Principal Meridian, State of Wisconsin.

The plat map and survey notes herewith are a correct representation of the land surveyed and subdivided. I have surveyed and subdivided said section in accordance with the rules for the survey of the public lands and with the statutes of the State of Wisconsin.



John C. Schulke
 4604 So. Pere Marquette Rd.
 Ludington, MI 49431
 R.L.S. State of Wisconsin
 Date of Survey 1989
 Certificate S-1665

John C. Schulke

Nov 3rd, 1989

Survey requested by: *Doris Staege* 1989
 District Ranger Date

